

ART REQUIREMENTS

Here at WOODCHUCK USA we use a process that calls for high quality vector images. Our lasers will directly follow the file that we give it, meaning a poor quality image leads to a less than ideal engraving. In order to circumvent any quality issues, we ask that you provide one of the following file types;

- .ia
- .eps
- .svg

or for images and design concepts;

- .psd
- .tif
- .pdf

Any JPEG or PNG should be at 300 DPI or higher resolution. We also suggest taking full color images down to a 4 color greyscale as this will more accurately show how the engraving will look and greatly increase the visible details.

RASTER VS VECTOR

Vector files are lossless and can be scaled to any size
Raster images show pixelization when scaled



VECTOR

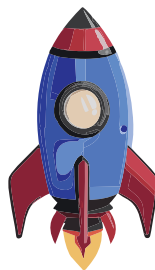


RASTER

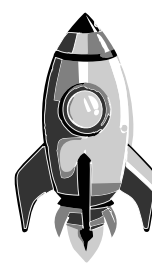


FULL COLOR VS 4 GREYTONES

contrast creates a drastic difference in allowing details to show through. Whenever possible use a greyscale logo with a maximum of 4 tones



FULL COLOR



4 GREYTONES

