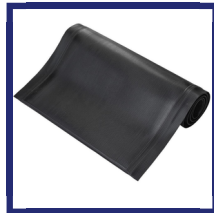
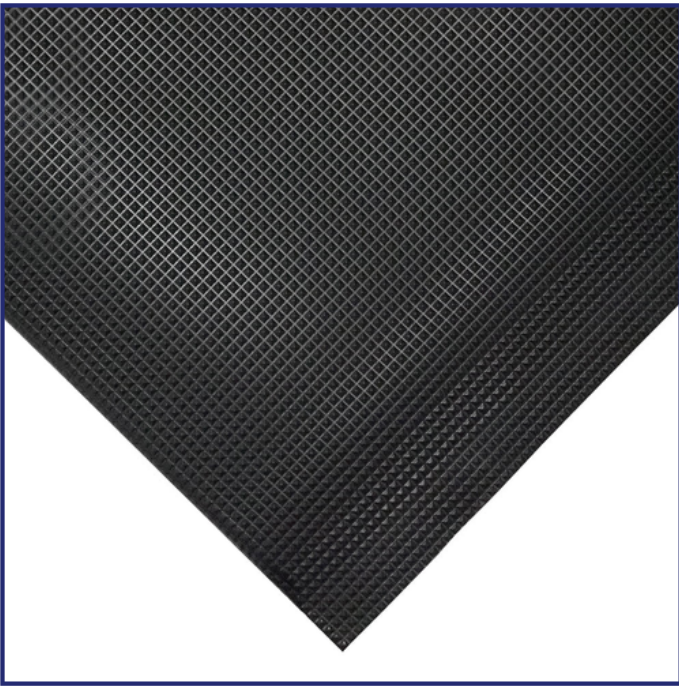


PinnacleMat Anti-Fatigue Mat

- When you need the lightness of foam but the resilience of a nitrile mat.
- Soft inner layer cushions impact from standing to reduce fatigue or discomfort.
- Unique outer layer encapsulates entire mat to prevent moisture ingress.
- Edges are heat sealed for outstanding durability.
- High density composition gives extra support and shape recovery.
- Ramped edges limit trip risk.
- Textured surface provides traction and captures some dirt and swarf.
- Fire tested to BS EN 13501-1.



Parts

Size Options	Colour	Weight (kg)
0.6 m x 0.9 m	Black	2.92
0.9 m x 1.5 m	Black	7.29
0.9 m x 18.3 m	Black	89
0.9 m x per linear metre (max. 18.3 m)	Black	3
1.2 m x 18.3 m	Black	108
1.2 m x per linear metre (max. 18.3 m)	Black	5.9

Technical Specifications

Material	Open Cell PVC (Foam) with PolyNit outer (fusion bonded, not glued)
Surface Finish	Pyramid pattern
Product Height	15 mm
Roll Length	18.3 m
Min. Operating Temperature	0°C
Max. Operating Temperature	+55°C
Resistance to Chemicals	In tests PinnacleMat showed no visible signs of corrosion or damage when fully submerged in both of the following chemicals: Castrol Alpha SP 320 Industrial Extreme Pressure Gear Oil and Pac 89 Phosphoric Acid Cleaner.
Environmental Resistance	Suitable for wet and dry indoor environments
Typical Applications	Demanding locations e.g. Engineering workshops
Installation Method	Loose lay
Cleaning Method	Brush/mop the top surface
Fire Tested to	BS EN 13501-1 Class Cfl - s1
Guarantee	3 years