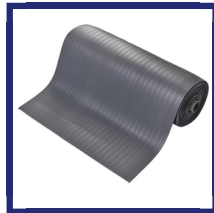


AtEase Ribbed Anti-Fatigue

Ribbed anti-fatigue mat for dry workplaces

- Versatile single layer foam anti-fatigue mat.
- Insulates standing workers against the effects of cold concrete floors.
- Lightweight, so easy to transport and reposition.
- Best suited to dry environments.
- High visibility version available with bright yellow borders.
- Ideal for lighter industrial use.
- Stylish ribbed surface pattern.
- Available in mats and rolls.
- Fire tested to BS EN 13501-1.



Parts

Size Options	Weight (kg)
0.6 m x 0.9 m	1.5
0.9 m x 1.5 m	3
0.9 m x 18.3 m	38
0.9 m x per linear metre	2
1.2 m x 18.3 m	51
1.2 m x per linear metre	4
0.6 m x 18.3 m	31
0.6 m x per linear metre	1.7

Technical Specifications

Material	Open Cell PVC (Foam)
Surface Finish	Pebble
Product Height	9.5 mm
Size of Safety Border	100 mm
Min. Operating Temperature	0°C
Max. Operating Temperature	+60°C
Environmental Resistance	Suitable for dry indoor environments
Typical Applications	Production lines, Assembly areas, Packing stations, Workbenches
Installation Method	Loose lay
Cleaning Method	Brush/mop the top surface
Fire Tested to	BS EN 13501-1 Class Dfl - s1
Guarantee	1 year when used in a dry environment
Adhesive recommended by F.Ball for permanent bond	F44
Tackifier recommended by F.Ball	F41
Adhesive recommended by F.Ball for heavy-duty/wet areas	F74, F81, F84