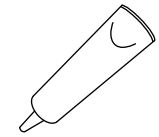
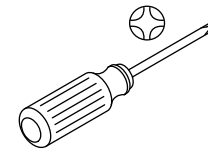


KALLISTA®

Installation Guide



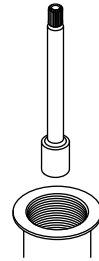
100% Silicone Sealant

Record your model number.

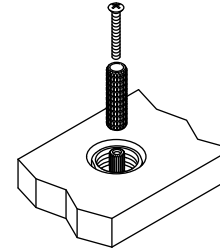
Important Information

Follow all local plumbing and building codes.

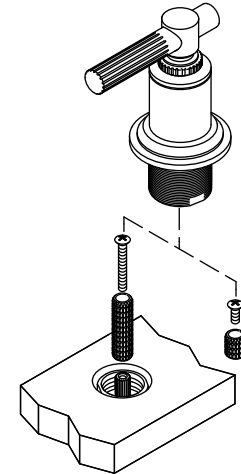
1 Install the stem extension into the valve.



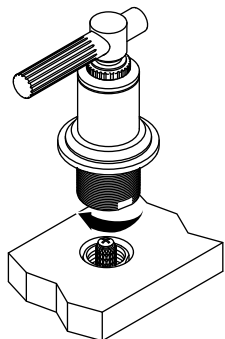
2 Install the spline adapter to the stem extension with the screw.



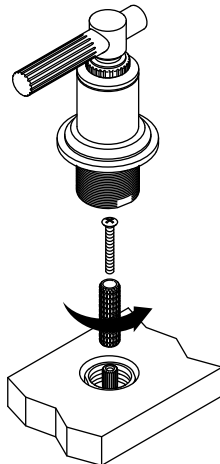
3 For deep rough-ins, use the longer spline adapter and screw.



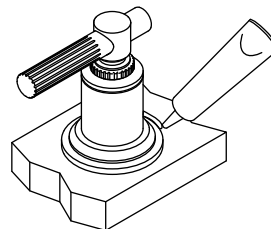
4 Install the handle onto the spline adapter. Thread the handle into the sleeve.



5 To adjust handle position, rotate the extension one tooth. Repeat until aligned.



6 Apply 100% silicone sealant around the escutcheon.



Questions? Problems? For additional assistance, please contact
KALLISTA's Customer Service Department at 1-888-4-KALLISTA
(1-888-452-5547) or kallista.com.