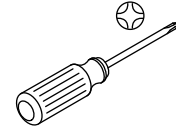
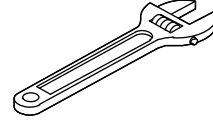




Stainless (Non-Staining) Plumbers Putty



Sealant Tape

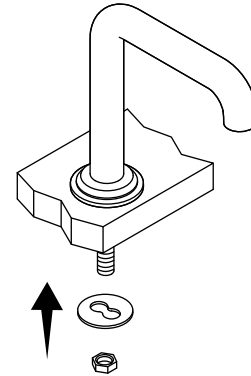
Record your model number.

Important Information

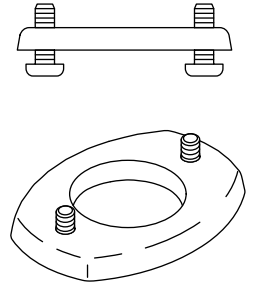
Follow all local plumbing and building codes.

Do not use petroleum-based plumbers putty on marble or stone surfaces.

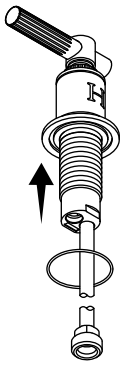
1 Install and secure the faucet.



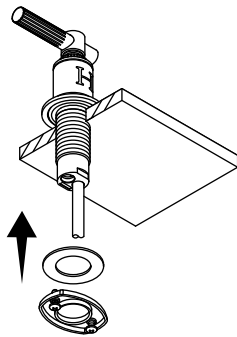
2 Partially thread the screws into the rings.



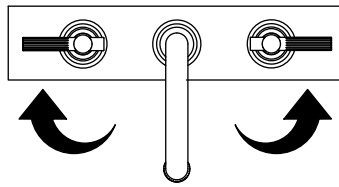
3 Install the O-ring. Install the handles with the "H" and "C" facing forward.



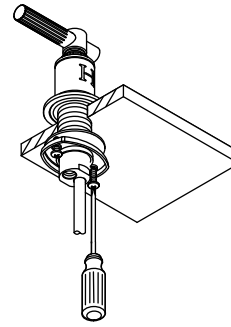
4 Install the washer and ring. Do not tighten the screws.



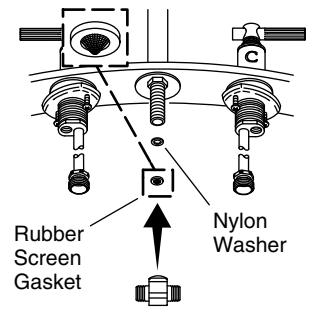
5 Turn the handles to the OFF position. Align the handles.



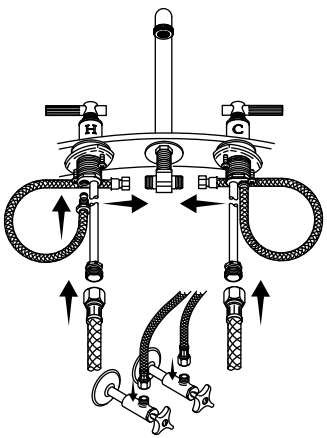
6 Secure the handles.



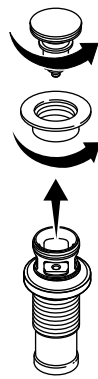
7 Install and tighten the tee with the screen cone down.



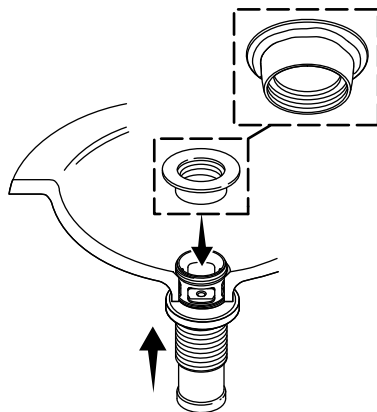
8 Connect the hoses.



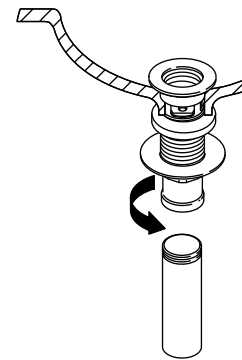
9 Disassemble the drain.



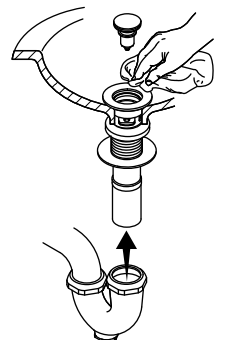
10 Apply plumbers putty to the flange and thread onto the drain body.



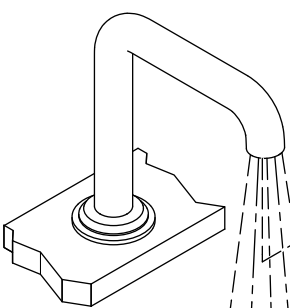
11 Tighten the nut. Apply thread sealant to the drain pipe threads.



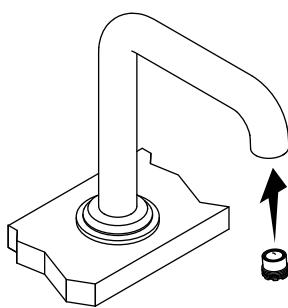
12 Install the stopper. Connect the trapway. Wipe away excess putty.



13 Remove the aerator, turn on the water, flush the hoses, and check for leaks.



14 Turn off the water. Reinstall the aerator.



Questions? Problems? For additional assistance, please contact
KALLISTA's Customer Service Department at 1-888-4-KALLISTA
(1-888-452-5547) or kallista.com.