

BorgWarner

Garrett  
by Honeywell

HOLSET  
TURBOCHARGERS

IHI

MITSUBISHI



GENUINE SUPPLIER

## ISUZU 6SD1 TF08 TURBO REPLACEMENT INSTRUCTIONS

Mitsubishi Heavy Industries (MHI) has manufactured a fixed geometry turbocharger in replacement for the original factory fitted variable geometry (VGS) turbocharger for the Isuzu F-Series Trucks with 6SD1 engine.

Although the two turbochargers when sat side by side may look proportionately different, the replacement has been engineered as a straight drop-in with no modifications required to the air induction/discharge piping or exhaust pipe.

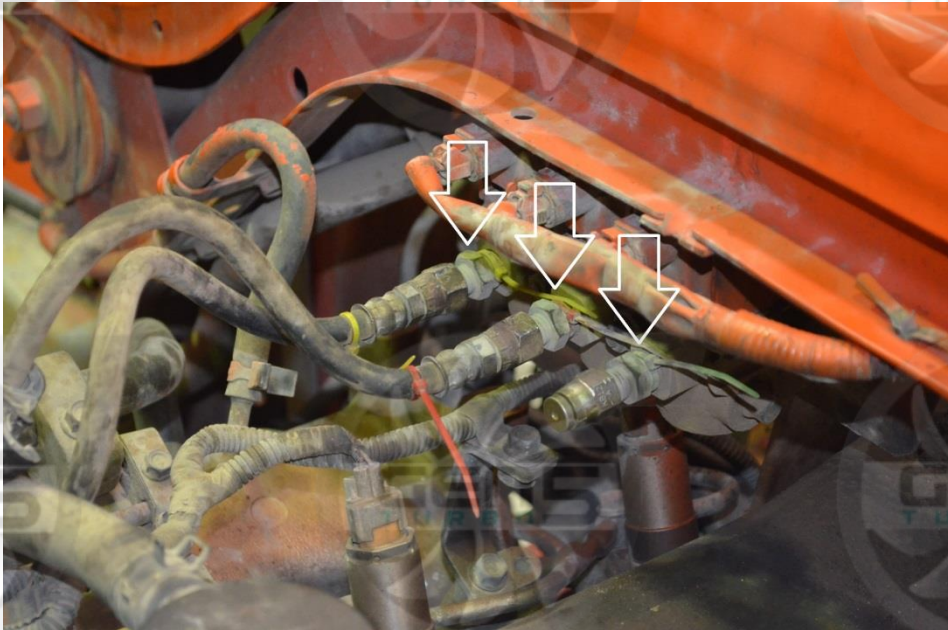


1. Remove oil supply pipe and oil drain fittings from the original turbocharger
2. Remove water fittings and lines from the turbocharger and block
3. Using the supplied blanking plugs, blank off the water fitting in the block



4. Follow the three vacuum lines from the pneumatic actuator on the turbocharger back to the VGS vacuum valve switch (located at rear of the engine, underneath cab support bar). Remove the vacuum lines at the switch and blank them off using the three supplied blanking caps.

*Note: In the below photo one line has already been removed and blanked for viewing reference*



5. Loosen the exhaust clamp off on the exhaust pipe connecting to the turbocharger and remove air induction/discharge piping. Remove the original turbo off the exhaust manifold
6. Using the supplied gaskets, refit the replacement non-wastegated turbo to the manifold



7. Refit the oil supply lines and oil drain fittings to the turbocharger. Refit the air induction and air discharge piping. Reposition the exhaust pipe and clamp onto the exhaust outlet of the turbocharger

