

MAINTENANCE

This appliance does not require particular attention. However, for cleaning, abrasive cloths or other implements that might harm its appearance should not be used.

Use a cloth that has been slightly dampened with warm water and neutral detergent.

Check that the parts exposed to heat and ventilation are free of any threads or fluff.

During cleaning, do not touch the quartz heating elements and disconnect the appliance from the power supply.

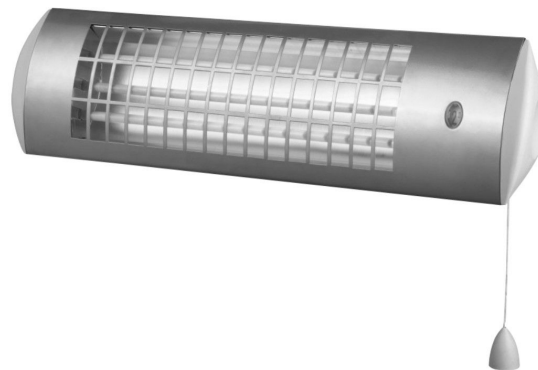
If the appliance breaks down and/or operating faults arise, disconnect it from the power supply, contact an authorised after-sales service centre and make sure that manufacturer approved spare parts are used. Failure to comply with these instructions may endanger appliance safety and shall void any guarantee rights that still apply.

Responsible disposal

This symbol indicates that this product should not be disposed of with general household waste. This applies throughout the entire EU. In order to prevent any harm to the environment or health hazards caused by incorrect waste disposal, the product must be handed in for recycling so that the material can be disposed of in a responsible manner. When recycling your product, take it to your local collection facility or contact the place of purchase. They will ensure that the product is disposed of in an environmentally sound manner.

Firefly
heaters

Quartz Heater



OL2152BLK

Infrared Heater.

IMPORTANT

A. Before beginning any procedure, please read the "GENERAL WARNINGS" page, where the important safety points are explained.

B. The electrical safety is assured only when this unit is correctly attached to an effective grounded installation.

GENERAL WARNINGS

1. Please carefully read the enclosed instructions that include important points about the safety for the installation, usage and maintenance. KEEP THIS BOOKLET HANDY FOR ANY FURTHER INFORMATION.

2. After having opened the package, check the entire unit.
— In case of any problem with this unit do not use until having consulted an authorized service/centre.
— All possibly harmful parts of the package (plastic bags, foamed polystyrene, nails, etc.) should be kept out of childrens reach.

3. Before connecting the unit, check that the data on the rating plate is the same as that of the electrical grid.

4. This unit should only be used for one purpose and that is as a space heater. Any other use is considered improper and therefore dangerous. The manufacturer can be held responsible for eventual damages caused by improper or incorrect usage.

5. These rules should be followed when using any type of electrical unit:
— DO NOT TOUCH THE UNIT WITH WET HANDS AND WITH BARE FEET.
— THE UNIT SHOULD NOT BE USED BY CHILDREN OR UNQUALIFIED PERSONS WITHOUT PROPER GUIDANCE.
— DO NOT COVER THE APPLIANCE, AS THIS COULD CREATE A FIRE HAZARD.
— IF THE APPLIANCE IS LOCATED OUTSIDE, DO NOT EXPOSE IT DIRECTLY TO ATMOSPHERIC AGENTS SUCH AS RAIN, SUN, ETC.

6. Do not fit accessories or devices that have not been planned for by the Manufacturers.

7. Do not use this unit in places such as: bathrooms, showers, pools, etc. In the event of installation in a bathroom, it is necessary to keep to the safety distances given in Fig. 1.

8. If you want to decommission the appliance, do not let children get hold of it as they could use it for their games. Remove all the dangerous parts and those that could restart the electrical system.

WARNING

1. The appliance must be installed by professionally qualified persons

2. An incorrectly installed appliance may cause injury to people and animals and damage to property for which the manufacturer cannot be deemed to be liable.

3. The electrical safety of this appliance can be guaranteed only if it is correctly earthed in compliance with current electrical safety standards.

4. This fundamental safety condition must be complied with. If you have any doubts at all, ask for the system to be thoroughly tested by professionally qualified persons.

5. The manufacturer cannot be deemed to be liable for any damage or injury caused by failure to earth the system.

6. Ensure that the power supply is compatible with the maximum power rating for the appliance indicated on the ratings plate. If you have any doubts, ask for professional advice.

7. Do not leave the appliance running unnecessarily. Turn off the appliance's main switch when the appliance is not being used.

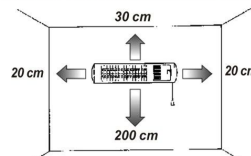
8. Do not cover the appliance.

9. Install only in a horizontal position.

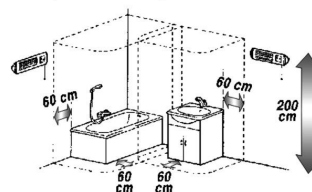
10. Do not install the appliance under a permanent power point or light socket.

INSTALLATION

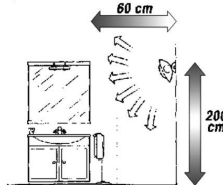
1. Keep at a safe distance from walls and objects.



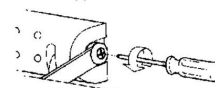
2. If the appliance is used in a bathroom, maintain all the prescribed safety distances.



3. Ensure that the heat output will not affect walls, objects, etc.



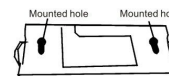
4. Use just one turn of the screws to adjust the tilt of the appliance.



5. Turn the wall-mounted support as far as it will go.



6. Drill two 6 Ø holes and insert the wall plugs supplied.



Put the screw to the plugs and Mounted the heater to the wall

INSTRUCTIONS FOR USE

Before starting up, ensure that there is no residual packing inside the heating areas, such as polystyrene, cardboard, etc.

You will immediately appreciate how simple it is to use. To turn on, take hold of the knob at the end of the tie rod and pull.

This operation will cause the displayed number to change and will therefore change the heat output.

1 = 600 W
2 = 1200 W
3 = 1800 W

In fanned models, the heat output is blown out to reach those parts that are less warmed by the direct heat output. To activate the fan, activate the second and third positions.

To zero functions on both models, just bring 0 to display.

IMPORTANT

Gradually decreasing vibrations when the appliance is switched on are a perfectly normal phenomenon.