

HANDLEBAR CROSSBAR INSTALL

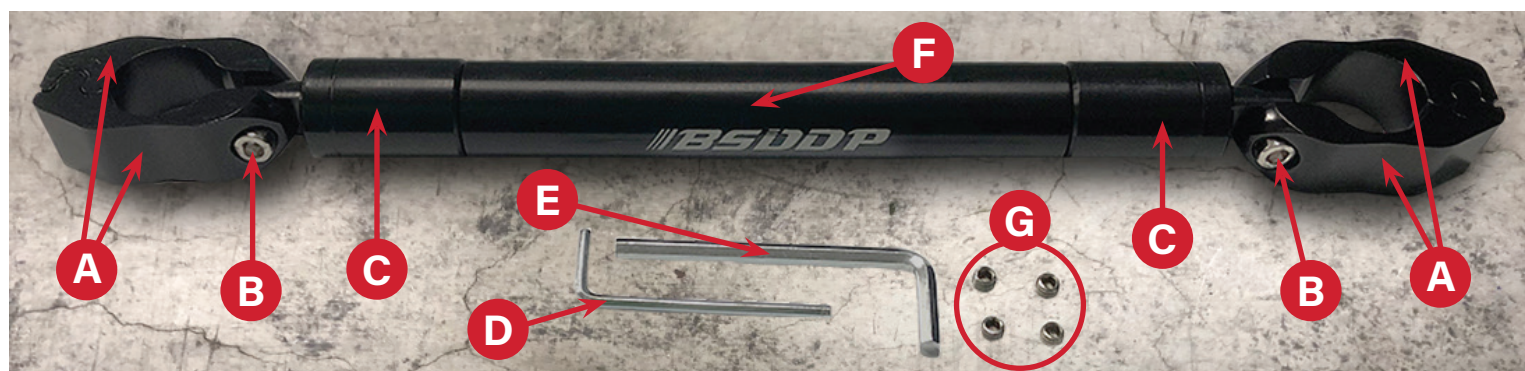
⚠ CAUTION: The Set Screws are Tiny! Be careful where you insert the set screws into the handlebar crossbar. Do it over a table or an area where it will be easier to notice the screws if they fall onto the ground.

Ⓝ NOTE: If something is missing or damaged, don't hesitate to contact Liberty Trikes customer service at 1-866-6894-4620 or e-mail us at support@libertytrike.com.

Remove or loosen the reflector on the handlebar because it may interfere with this install. Remember to reinstall or tighten the reflector screw after completing this install.

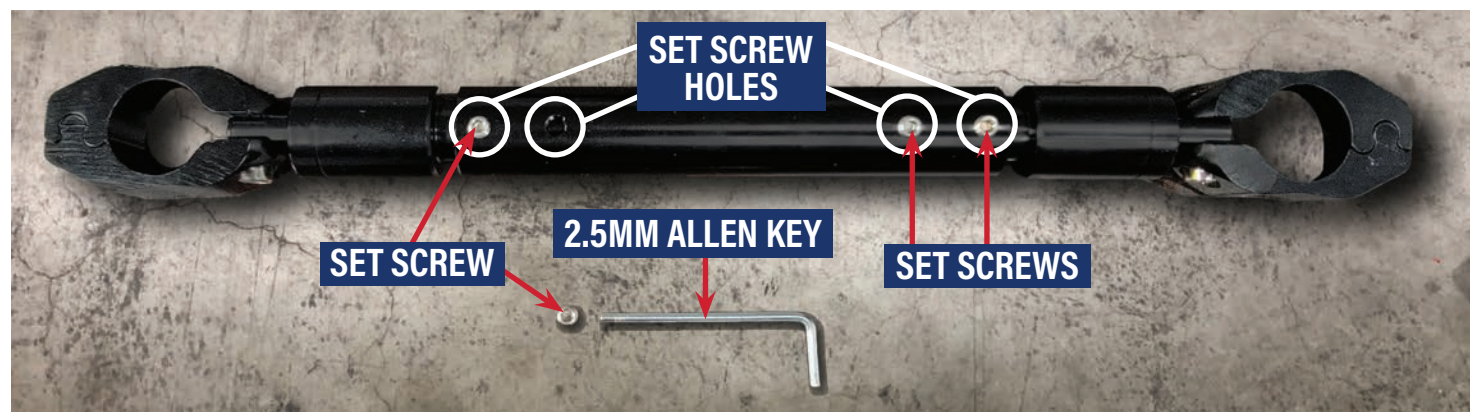
THE HANDLEBAR CROSSBAR OVERVIEW

- A** - Clamp Mounts
- B** - Clamp Screw
- C** - Adaptor End
- D** - 2.5mm Allen Key
- E** - 4mm Allen Key
- F** - Crossbar
- G** - Four (tiny) Set Screws



HOW TO INSTALL THE HANDLEBAR CROSSBAR

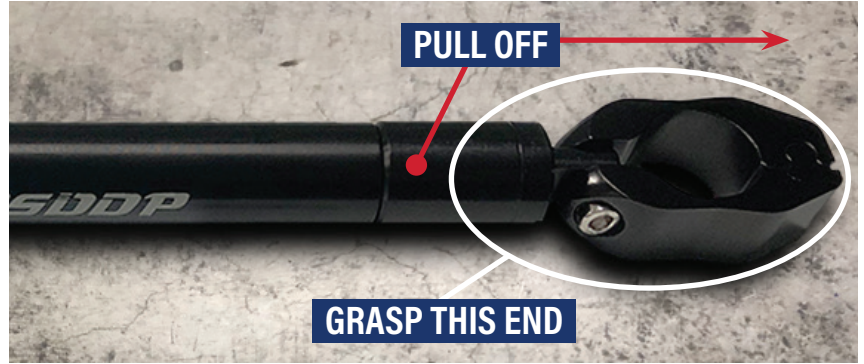
Using the 2.5mm Allen key, install the set screws into the holes on the center of the crossbar. Do not tighten the set screws all the way but just enough, so the crossbar can still slide back and forth freely.



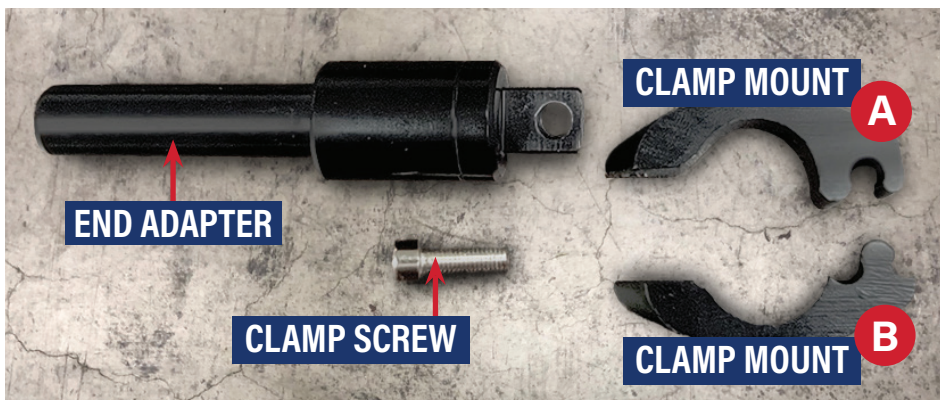
CROSSBAR INSTALL (CONTD.)

⚠ CAUTION: The Set Screws are Tiny! Be careful where you insert the set screws into the handlebar crossbar. Do it over a table or an area where it will be easier to notice the screws if they fall onto the ground.

Grasp the end of the handlebar clamp (circled in white) and pull the clamp end out from the crossbar.



Using the 4mm Allen key, turn the clamp screw counterclockwise to remove the screw from clamps A and B.



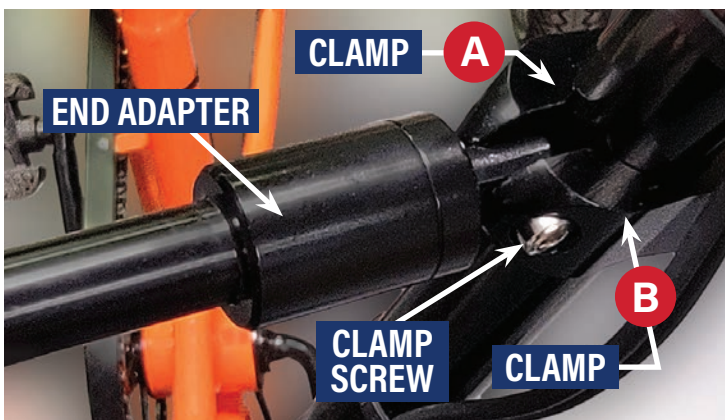
CROSSBAR INSTALL (CONTD.)

⚠ CAUTION: The Set Screws are Tiny! Be careful where you insert the set screws into the handlebar crossbar. Do it over a table or an area where it will be easier to notice the screws if they fall onto the ground.

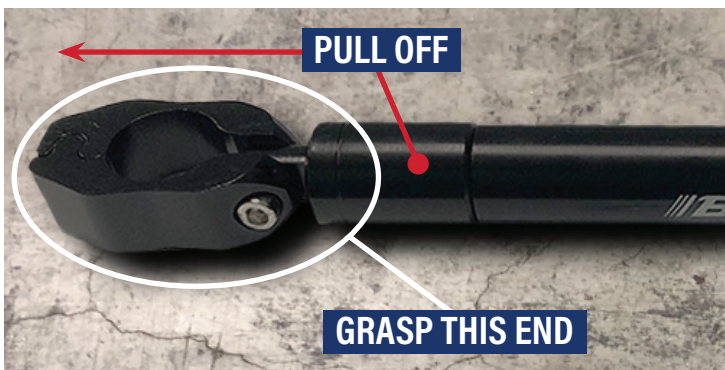
Ⓝ NOTE: Remove or loosen the reflector on the handlebar because it may interfere with this install. Remember to reinstall or tighten the reflector screw after completing this install.



Stand in front of your Liberty Trike. Place clamps A and B on the vertical section of your handlebar (circled in white). Make sure to place the handlebar clamp under any zipped cables tied to your handlebars.



Place the end adapter between clamps A and B. Insert the clamp screw and slightly tighten clockwise with the 4mm Allen key.

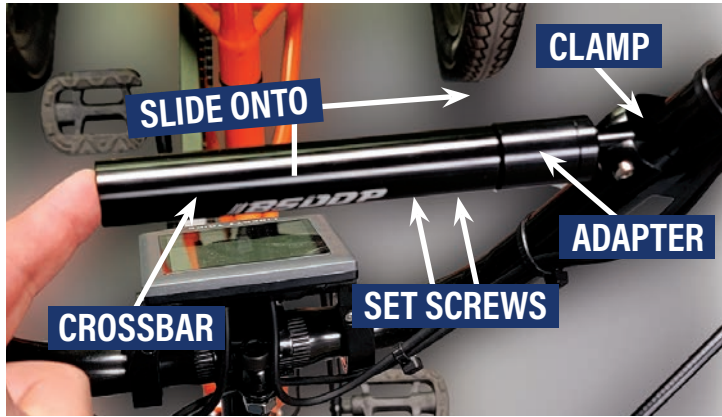


Grasp the other end of the handlebar clamp and pull the adapter clamp out from the crossbar. You will need the crossbar in the next step.



CROSSBAR INSTALL (CONTD.)

⚠ CAUTION: The Set Screws are Tiny! Be careful where you insert the set screws into the handlebar crossbar. Do it over a table or an area where it will be easier to notice the screws if they fall onto the ground.

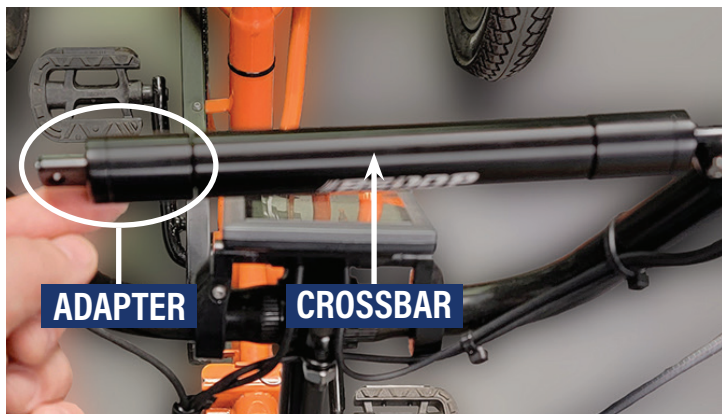
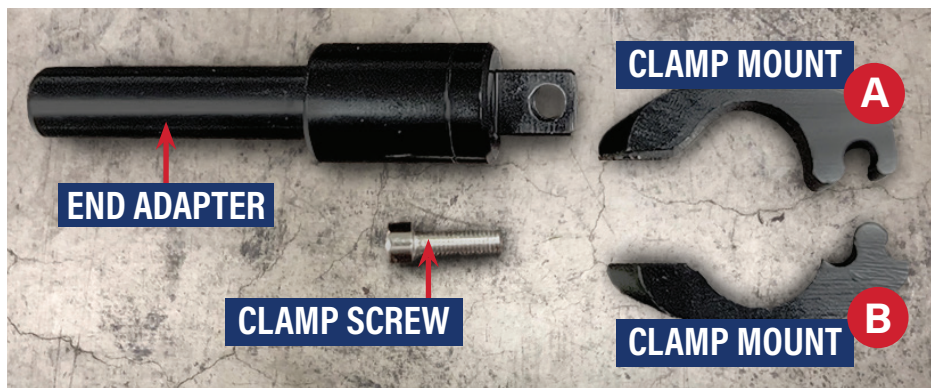


Take the crossbar and slide it onto the end adapter.

On the underside of the crossbar is two set screws. Use the 2.5 Allen key and turn the set screws clockwise to slightly tighten.



Using the 4mm Allen key, unscrew the clamp screw counterclockwise. Removing this screw will separate clamps A and B from the end adapter.

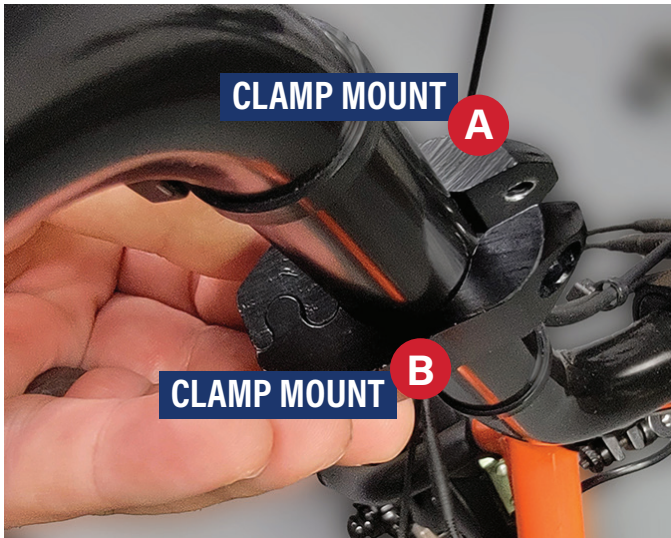


Insert the end adapter into the crossbar and slightly tighten the two set screws.

CROSSBAR INSTALL (CONTD.)

⚠ CAUTION: The Set Screws are Tiny! Be careful where you insert the set screws into the handlebar crossbar. Do it over a table or an area where it will be easier to notice the screws if they fall onto the ground.

Ⓝ NOTE: Remove or loosen the reflector on the handlebar because it may interfere with this install. Remember to reinstall or tighten the reflector screw after completing this install.



Stand in front of your Liberty Trike. On the opposite side of the handlebar, place clamps A and B on the vertical section of your handlebar.

Make sure to place the handlebar clamp under any zipped cables tied to your handlebars.



Place the end adapter between clamps A and B. Insert the clamp screw and slightly tighten clockwise with the 4mm Allen key.



At this point, the crossbar should be on the handlebars but most likely uneven. The last two set screws should be loose. Loosen all the other set screws, just enough, so that you can make any adjustments.

Once the crossbar is in its desired position, tighten all four set screws and the two clamp screws.

Attach any accessories onto the crossbar and get riding!