

SIR PLUS

Made To Order Guide – Waistcoats

Sir Plus holds a variety of surplus fabrics that have been lovingly sourced to give you the pleasure of making your own waistcoat. Please see below to find out all the information you need!

6A Tapp Street, London, E1 5RE 02071274213

Timeline

- Once you've decided you want a made-to-order waistcoat, you'll need to work out the fabric and style you want.
- Please note that upon confirmation of your made-to-order waistcoat, full payment is taken before the order is made.
- Lead time is 28 days after receiving payment; this is variable dependent on specifications.
- Once your order is complete, we will contact you via email to confirm your delivery details.
- Our usual method of postage is Royal Mail 1st class next day recorded this needs to be signed for, so make sure you're in! We'll give you a tracking number so you know where your baby is!

Warning

Made-to-order waistcoats cannot be refunded or exchanged, providing the garment is as per the specifications.

Firstly...

Name:

Email address:

Phone no:

When is the event or special occasion?

Discounts

We offer a discount of 5% if you order five or more pieces, and a discount of 10% if you order ten or more pieces. How many waistcoats are you after?

Measurements

We will require just a few measurements from you in order to make up your garment. Please give us your chest measurement (take a tape measure around the widest part of your chest, underneath your armpits) and your height so that we can determine the right size for you. Please supply both in inches.

Your chest measurement:

Height:

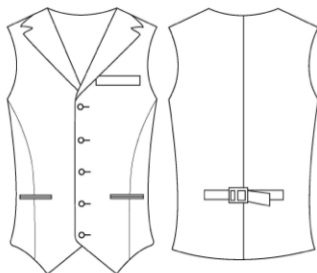
Additional Details:

Any notes/ additional details we might need to know please jot them below. If you are having multiple waistcoats made up please list all sizes and heights. Alternatively, feel free to just doodle...

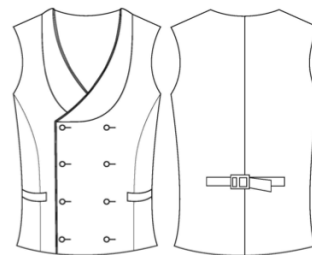
The Waistcoat - Please circle your selections or if you're doing this digitally to email back to us then please highlight in red

The Fabric:

- Linen **£150**
- Wool **£175**
- Cashmere **£200**
- Your own fabric **£125**

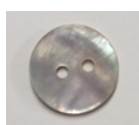


Single Breasted

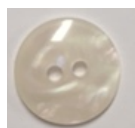


OR Double Breasted (+ £10)

Buttons - please choose from the following:



Real Mother of Pearl + £5



Faux Mother of Pearl



Navy Plastic



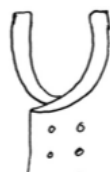
Coconut



Brown Mock Horn

Lapels:

Do you want lapels? Yes / No
 What style? Slash Lapels, Notch lapels,
 Or no lapels?



SLASH LAPEL



NOTCH LAPEL



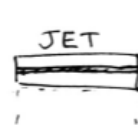
NO LAPELS

Piping

Edge Piping + £10



WELT



JET



PATCH



FLAP

Pockets

Do you want **two lower** pockets? **Yes / No**
 If Yes, please specify what type of pocket: Welt, Jet, Patch or Flap.

Do you want a **chest** pocket? **Yes / No**
 If Yes, please specify what type: Welt, Jet, Patch or Flap.

Please note that flap pockets are an additional £10

Lining

- Navy Satin
- Ivory Satin
- Your Own Fabric
- Same Fabric as the front + **£15**