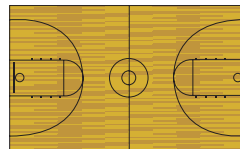


CLEAN N' SHINE

Cleaner/ Maintainer



Scan for product's
Material Safety Data Sheet

FEATURES

- One step cleaner/maintainer
- Versatile
- Highly concentrated
- Repairs scuffs and improves gloss

BENEFITS

- Time and labor cost savings
- Keeps floors looking great
- Can be used to damp mop, buff/burnish, or as a heavy duty cleaner
- Low end use cost

AREAS OF USE:

- Office buildings
- Schools
- Hallways
- Entrances
- Gymnasiums
- Wood Floors
- Vinyl Tiles
- Linoleum
- Terrazzo

DIRECTIONS

FOR CLEANING WITHOUT BUFFING: Dust mop all flooring and remove gum and adhesives. Dilute product 2 ounces per gallon of cool water in the solution tank of the auto-scrubber or mop bucket. Auto-scrub or mop on all flooring using overlapping passes. If auto-scrubbing, dispense, agitate, and pick up the solution. Pick up any puddles with a clean damp mop.

FOR CLEANING AND BUFFING: Dust mop all flooring and remove any gum or adhesives. Dilute product 4 ounces per gallon of cool water in a mop bucket or auto-scrubber. Apply a thin, even coat on the surface. Do not pickup solution. Allow to dry. Buff all flooring with a polishing pad to restore the floor to the ultimate "wet look" shine.

FOR HEAVY DUTY CLEANING: Add 8 ounces concentrate per gallon of water. Apply to surface, scrub, and rinse in the usual manner.

This product meets the maximum content requirements for Volatile Organic Compounds (VOCs) as established by State and Federal regulations.

CAUTION

EYE IRRITANT. MAY CAUSE SKIN IRRITATION WITH PROLONGED CONTACT. Avoid contact with skin, eyes, and clothing. Avoid breathing of vapors or mists. Do not take internally. Keep out of the reach of children. For professional use only.

FIRST AID

EYE CONTACT: Flush with water for at least 15 minutes. If irritation persists, call a physician.

SKIN CONTACT: Wash thoroughly with water. If irritation persists, call a physician.

INGESTION: Immediately drink large quantities of water. Contact a physician.

INHALATION: Remove to fresh air.

CONTAINS

Potassium Tall Oil Soap (61790-44-1), Nonionic Surfactant (9016-45-9), Tetrasodium Pyrophosphate (7722-88-5), Tetrasodium EDTA (64-02-8), Perfume Oils (N/A), Dye (N/A), Water (7732-18-5).

SPECIFICATIONS:

Color:
Brown

Odor:
Sassafras

Base:
Detergent

pH:
10.0 – 10.5

Dilution:
1:16 – 1:64

Viscosity:
Moderate

Flash Point:
None

Solubility:
Complete with water

Detergency:
Excellent

Storage/Stability:
2 years

Weight Per Gallon:
8.45lbs/gal.

Freeze/Thaw Stability:
Keep from freezing

HEALTH		1
FLAMMABILITY		0
PHYSICAL HAZARD		0
PERSONAL PROTECTION		A



1048 Stinson Drive, Reading PA 19605
Phone: 1-800-548-4568

www.miscoproducts.com



CLEAN N' SHINE Cleaner/ Maintainer

Lipiador/Sosten



Availability:

Packaging	Item #
4-1 F Gal.:	CNS-14MN
2-2.5 Gal.:	CNS-25MN
Pail/ 5 Gal.:	CNS-05MN
Drum/ 55 Gal.:	CNS-55MN
Tote/ 275 Gal.:	CNS-BKMN

Wood Floors
Piso de madera

Vinyl Tile
Azulejo del vinilo

Linoleum
Linóleo

Terrazzo
Terrazo

DESCRIPTION

A cleaner/maintainer ideal for use on sealed wood for cleaning and buffing finishes to a brilliant shine. Provides superior cleaning power and can be used on any surface not harmed by water. Delivers excellent emulsifying and penetrating action in both hot and cold water. Cleans, polishes, and preserves. May be used for damp mopping, auto scrubbing, or heavy duty cleaning.



FLOOR COATING AND FINISHING
MATERIAL AS TO SLIP
RESISTANCE ONLY 17SU



1048 Stinson Drive, Reading PA 19605
Phone: 1-800-548-4568

www.miscoproducts.com