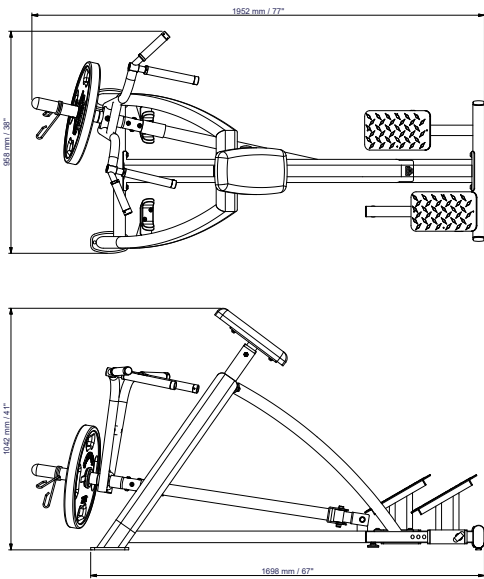


PLTR Plateload T-bar Row Machine

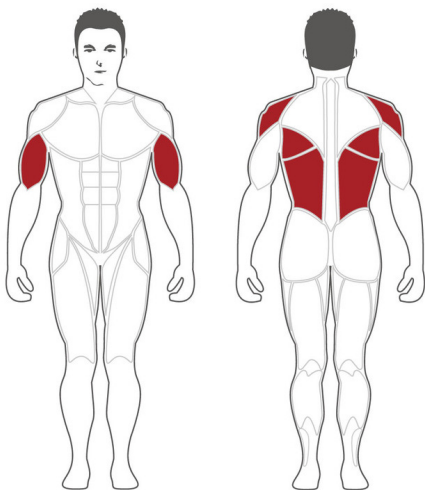


Designed by fitness experts, the Steelflex Plate Load PLTR T-Bar Row machine has a Multi joint system providing full range-of-motion in a natural biomechanical movement.

The adjustable footplate allows optimum positioning for all size users. Ergonomic hand grip positions and angled foot rests for optimum comfort during workouts Olympic weight plate post fitted as standard.

The unilateral arm action ensures balanced muscle development.

- Olympic weight posts (for use only with olympic weight plates)
- For both commercial and non-commercial use
- **Weight plates not included**



FEATURES

- 11 gauge steel frame, 5 x 10 cm oval tubing
- Electrostatically applied powder coating
- 50 mm CGPC high density foam upholstery & ergonomic design
- Industrial rated bearings, sealed bearings at all pivot points
- Dipped PVC handle
- Continuous welds at all pivot points
- Multi joint system for a full range of motion in a natural biomechanical movement
- Adjustable footplate
- Ergonomic handle positions and angled footrests
- Unilateral arm action for balanced muscle development.

SPECIFICATIONS

Dimensions:	195.2 x 95.8 x 104.2 cm
Product weight:	57.6 kg
Weight capacity:	225 kg
Max. user weight:	120 kg

WARRANTY: COMMERCIAL AND RESIDENTIAL

Frame	15 years
Bearings	2 years
Upholstery & grips	6 months
Other parts	1 year