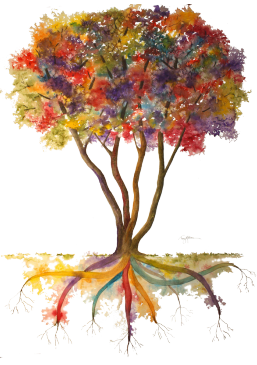


Word Hatch

Crack Open Your
Word-Building Skills



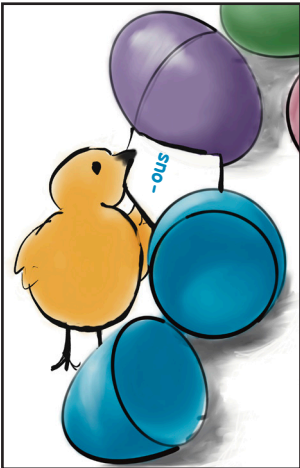


Rooted in Language

Growing Readers & Writers

Word Hatch

Crack Open Your Word-Building Skills



Rooted in Language provides engaging strategies for both struggling and typical learners. Our activities are based on best practices from research in the fields of reading intervention, education, linguistics, and speech language pathology.

We hope you and your family enjoy this word-building activity!

Thank you,

The Rooted Crew

For more of our ideas or to share some of yours,
visit us at RootedinLanguage.com or on



Produced by Rooted in Language

Website: www.rootedinlanguage.com • To report errors contact help@rootedinlanguage.com
Copyright ©2023, Rooted in Language, All Rights Reserved

Not for resale. Reproducible for personal use by the purchaser only. Otherwise, no part of this publication may be copied, reproduced, stored in a retrieval system, or transmitted electronically in any form or by any means, electronic, mechanical, photocopying, recording, or otherwise, without the prior written permission of the copyright holder at:

Rooted in Language/CTP • 7577 Central Parke Blvd., Suite 350 • Mason, OH 45040

At Rooted in Language we believe in our products and ideas. Each product is refined through our work with children of varying ages and abilities. However, we recognize that teaching styles differ and that children are individuals with complicated needs. Consequently, Rooted in Language offers no explicit or implied guarantee or warranty for your student's learning outcomes.

Word Hatch Instructions

Word Hatch is a word building game for 2-4 players. Players should be old enough to read across a word and to understand that words can be built by adding prefixes and/or suffixes to base words. The game can be played competitively: players find new words on their own. Or the game can be played cooperatively: players help each other spot new derivatives (recommended for younger players).

Set-up:

1. Print one Word-Building Sheet for each player.
2. Print several Score Sheets. Each player needs at least one but can use an additional sheet, if needed.
3. Gather a pencil for each player.
4. Gather 2 dozen small plastic eggs and a bowl or basket.
5. Cut apart Base Word cards, mixing them up and placing them face down in a pile on the table.
6. Cut apart Prefix and Suffix cards and place one prefix OR suffix in each plastic egg. Mix up the eggs and put them in the bowl or basket in the center of the table.

To Play:

The youngest player starts the game by drawing a Base Word card from the pile. It may be a **free base word** - meaning that it makes a word by itself before any prefixes or suffixes are added (ex: **act**). Or it may be a **bound base word**, meaning it only makes a word after a prefix or suffix has been added to it (ex: **spect** as in **inspection**).

The player then places their Base Word card in the Base Words section of their Word-Building Sheet. If they drew a free base word, the player can write the base word on a line on their Score Sheet.

The player then draws an egg from the basket and opens it. Place the prefix or suffix in the appropriate section of the game sheet.

The player must then determine if they can make a new word by adding the new prefix or suffix to any base words on their Word-Building Sheet. As the game progresses, players will continue to add new word parts to their sheet, so the possibilities for making new words will continue to grow!

Players write as many new words as they can find each time they add a new word part. Players can combine as many affixes as possible in order to make new word derivatives.

For example, if a player has the following word parts on their sheet:

Word Hatch Word-Building Sheet		
Prefixes	Base Words	Suffixes
en/em	act struct play	-ed

The player could have written the words **act**, **acted**, **enact**, and **enacted**. They could also have written **play**, **employ**, and **employed**. However, they would not yet have been able to make a word from the bound base word **struct**.

co/con/
com

If they drew this card from their next egg, the player could now add the words **construct**

and **constructed** to their Score Sheet.

In a single turn, a player will draw a base word and place it on their Word-Building Sheet, then draw an egg and open it, placing the new prefix or suffix on their Word-Building Sheet. Players should then pause to determine what new words they can make to add to their Score Sheet. Feel free to move word parts around within their columns to help spot any new word derivatives. Write all new words along with each word's score before moving on to the next player.

To Score:

Each new word is worth 1 point. Then add one point for each prefix in the word and one point for each suffix in the word. Finally, put the word's total score in the last column.

For example, the word **indestructible** would be worth 4 points:

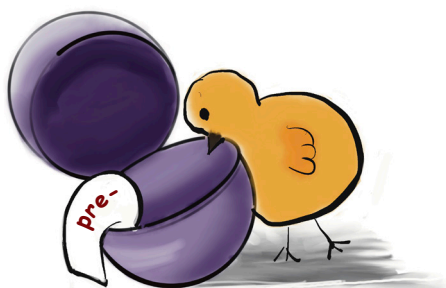
1 point for the whole word

2 points for the prefixes (1 for **in** and 1 for **de**)

1 point for the suffix (**ible**)

Total word score 4 points

The game ends when there are no longer enough base words or eggs to complete another full round. Add up the Points per Word column. The highest score wins!



Note: Many affix cards contain more than one choice. Some options represent alternate spellings of the same affix (separated by a /). Some options are only meant to provide additional choices, not to represent the same meaning.

Word Hatch Score Sheet				
New Words	Word = 1	# of Prefixes	# of Suffixes	Total Pts. per Word
<i>destructive</i>	1	1	1	3
<i>destructible</i>	1	1	1	3
<i>indestructible</i>	1	2	1	4

Sample Score Sheet

Free Base Word & Bound Base Word Cards

help	act	play	view	sign
cook	port	fine	dress	joy
hope	form	strict	join	point
ploy	graph	press	serve	use
move	tract	spire		
vert	fract	rupt	pend	struct
duct	spect	dict	capt	ject
flect				



WARNING: CHOKING HAZARD



Prefix & Suffix Cards

re-	un-	dis-	in/im-	co/con/com-
pre-	de-	e/ex-	a/ad/as/at- ab-	en/em-
-s/-es	-ion	-ure	-ed	-er
-ful	-less -ness	-al	-ly	-able/ible
-ive	-ing	-ment	-ite -ate	



WARNING: CHOKING HAZARD



Word Hatch Word-Building Sheet

Prefixes	Base Words	Suffixes

Word Hatch Score Sheet

New Words	Word = 1pt.	# of Prefixes	# of Suffixes	Total Pts. per Word
Final Score				<input type="text"/>