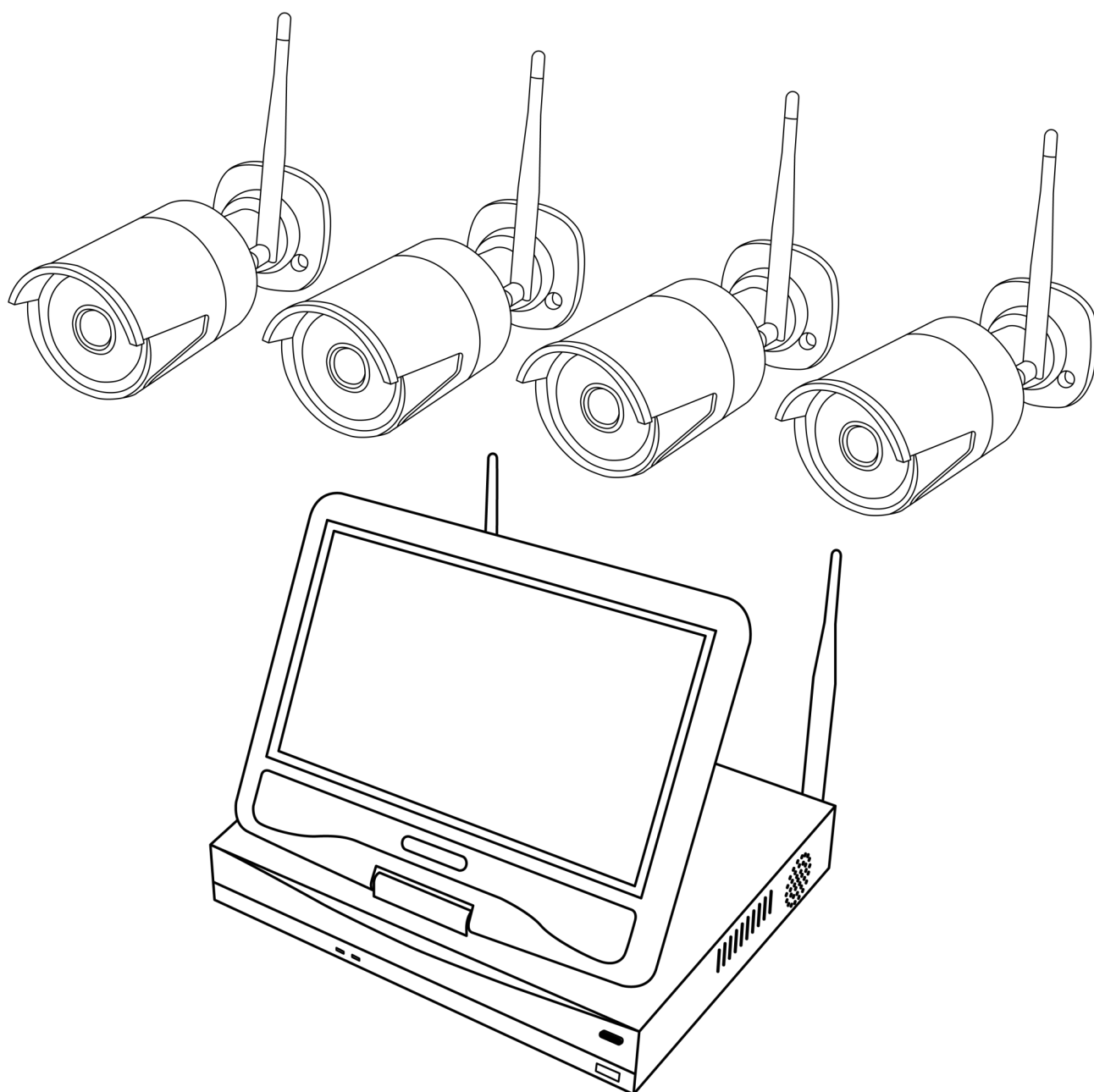


# Wireless HD NVR

## USER MANUAL



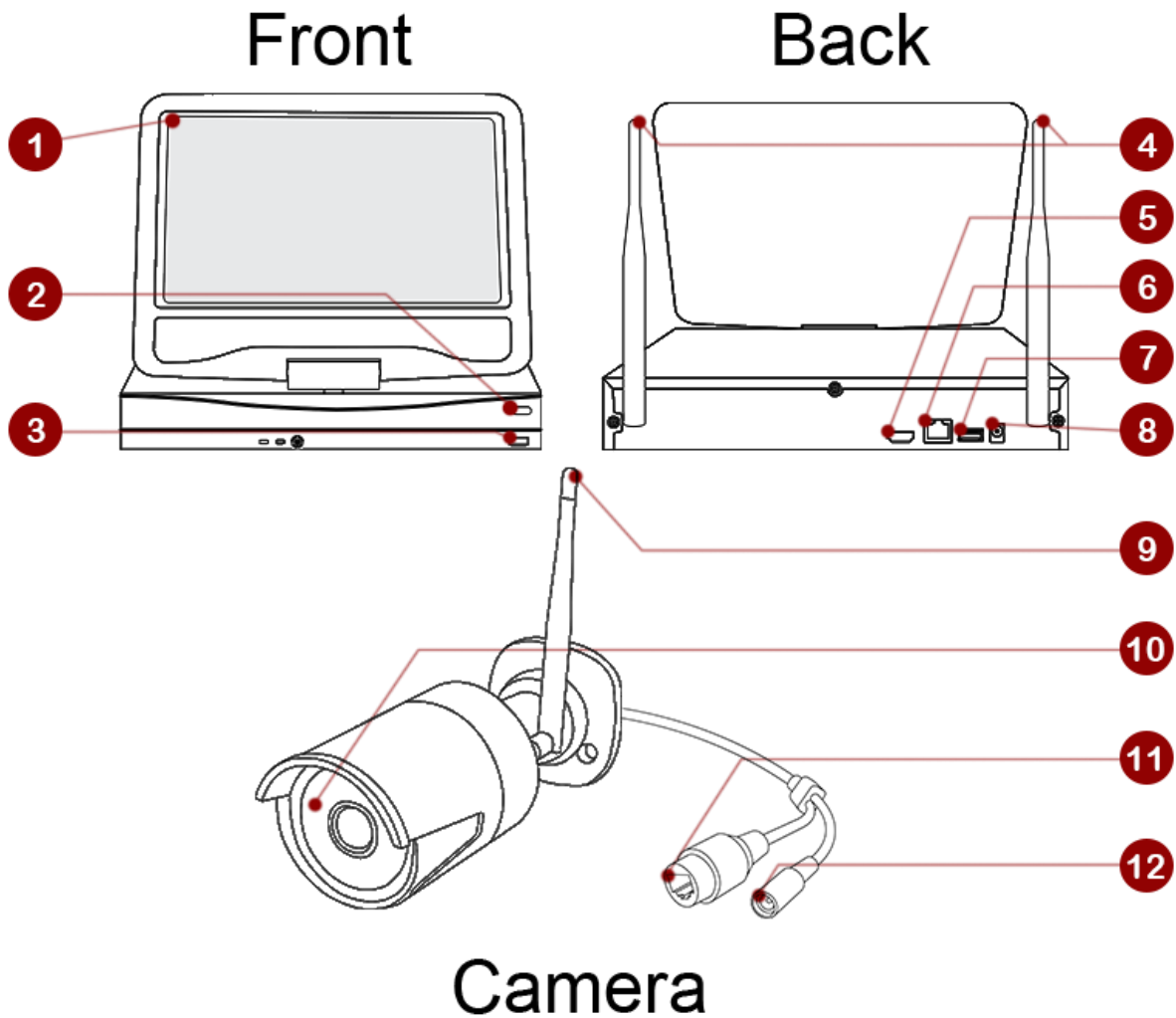
<b>Safety Information</b>	<b>3</b>
<b>Product Overview</b>	<b>4</b>
<b>Connection Diagram</b>	<b>5</b>
<b>Getting Started</b>	<b>6</b>
1. Powering up the NVR	6
2. NVR Setup Wizard	6-7
3. Connecting Cameras	7
4. Smartphone Application	8-9
5. Web Viewer	10
<b>System Menu</b>	<b>11</b>
6. Menu Bar	11
7. Video Playback	12
8. Video Backup	13
9. Record Setup	14
10. Generate Esee ID	15
11. Add & Edit User Account	16
12. Date / Time Setup	17
13. Display Setup	17
14. Adding Camera By Matching Code	18
<b>Specification &amp; Other Information</b>	<b>19</b>
15. NVR Spec	19
16. Camera Spec	20
17. Warranty Information	21
18. References & Contact Information	21

# Safety Information

## Safety Precautions

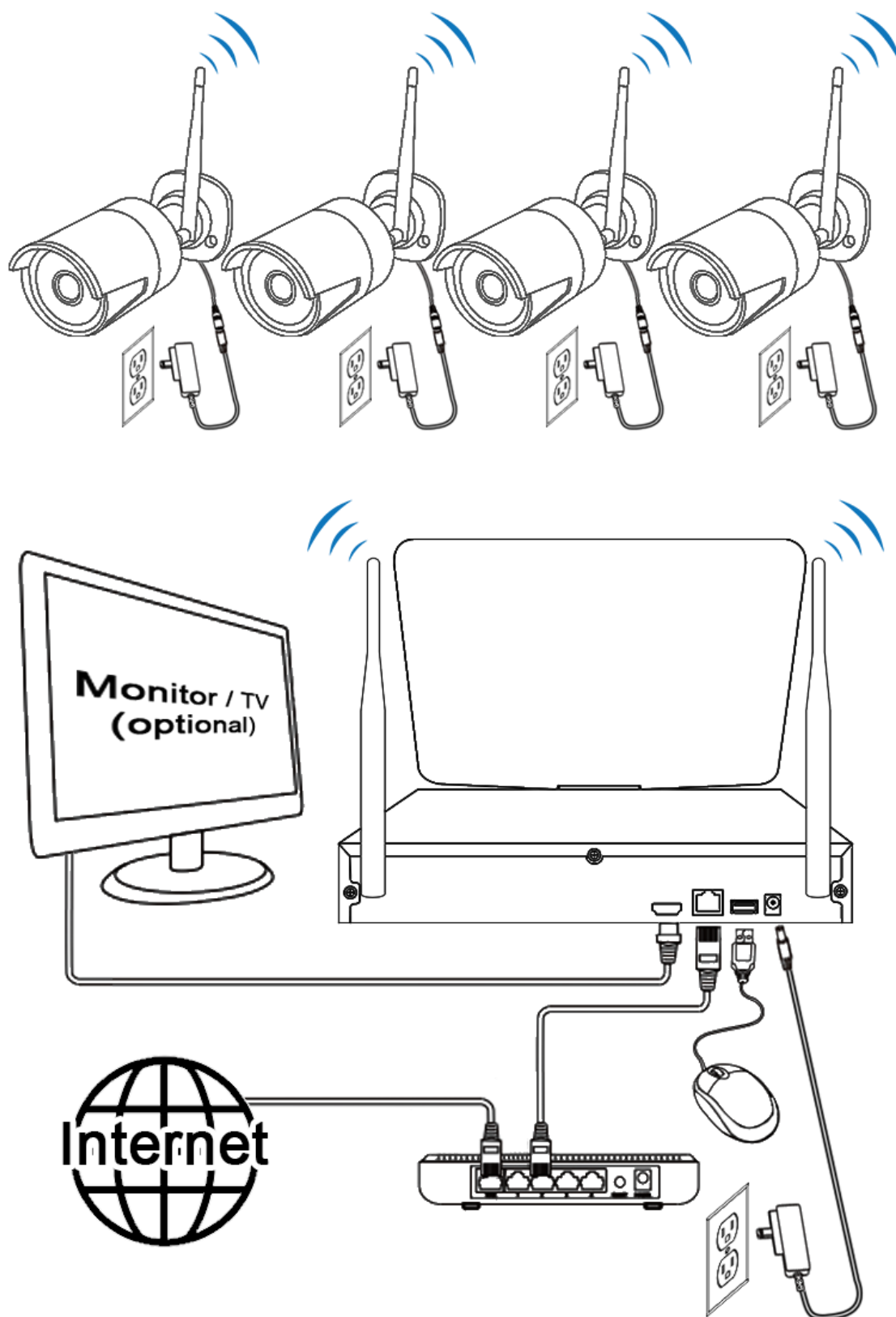
- Do not touch live electrical parts.  
Electric shock can be avoided. Follow the recommended practices listed below. Faulty installation, improper grounding, and incorrect operation and maintenance of electrical equipment are always sources of danger.
- Do not try to install equipment outdoor, during strong wind and rain.
- Do not install or remove equipment outdoor, when raining.
- Do not try to install or operate any equipment, during a thunderstorm.
- Always ground all electrical equipment and the work platform.  
Prevent accidental electrical shocks. Connect power source, control cabinets, and work platform to an approved electrical ground.
- Always use the correct cable size.  
Sustained overloading will cause cable failure and result in possible electrical shock or fire hazard. Work cable should be the same rating as the factory.
- Always keep cables and connectors in good condition. Improper or worn electrical connections can cause short circuits and can increase the chance of an electrical shock. Do not use worn, damaged, or bare cables.
- Always avoid open-circuit voltage.  
The added voltages increase the severity of electric shock hazard.
- Always wear insulated gloves while you adjust equipment.  
Electric power should be turned off and insulated gloves should be worn when making any equipment adjustment to assure shock protection.
- Always wear protective clothing such as long sleeve shirts while you are installing or removing equipment.
- Always wear high, snug fitting shoes.
- Always wear clean clothes without grease or oil.
- Protect neighboring workers from exposure to arc radiation.
- Always wear long trousers or jeans while you are installing or removing equipment.
- Always wear safety helmet or hard head and safety shoes before work.
- Always keep the equipment in dry places.
- Always wear safety harnesses/belt while you work in high places.
- Always wear dry clothing and avoid moisture and water.
- Always wear Public Safety Vest, while you work at night.
- Make sure all electrical connections are tight, clean, and dry.
- Make sure that you are well insulated to eliminate electric static charge.
- Always wear dry gloves, rubber-soled shoes, or stand on a dry board or platform.
- Always follow recognized safety standards.
- Always wear correct eye, ear, and body protection.
- Always have second person on-site, while you work in dark, poor ventilation, or high places.
- Make sure that you are well protected against arc flashes, mechanical injury, or other mishaps.
- Make sure that the polarity of wire is correct before installing equipment.
- Always handle equipment with care.
- Do not block the ventilation of equipment.
- Do not put the magnetic parts around the equipment.
- Do not put the objects on top of the equipment.

# Product Overview



- |                           |                      |
|---------------------------|----------------------|
| 1 10.1 in Built-in Screen | 7 Rear USB Port      |
| 2 Monitor On / Off Switch | 8 HD NVR Power Port  |
| 3 Front USB Port          | 9 Camera Antenna     |
| 4 HD NVR Antenna          | 10 Infrared LED      |
| 5 HDMI Output             | 11 LAN Port          |
| 6 LAN Port                | 12 Camera Power Port |

# Connection Diagram



# Getting Started

## 1. Powering up the NVR



1. Power up the NVR using the provided 3 Amp power adapter within the package and plug it into the DV12V port on back of the device



2. Connect the USB mouse next to the power port on the back of the device.



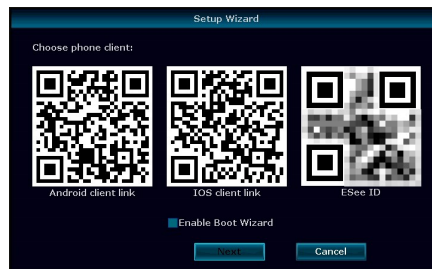
3. Connect the Cat5e (LAN) cable to the NVR and plug the other end to the internet router or modem for internet connection.

(This step is require for remote viewing)

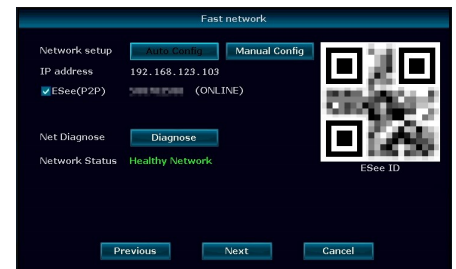
## 2. NVR Setup Wizard



1. Once you have connected the power adapter wait for the system to start up. When you see the log in screen use the mouse to click ok to log in. Once you have log in setup wizard will show up.



2. You may scan the QR code using a QR code reader to download the application or skip to the next step, and download the application after you are finish with the setup.



3. Next you will asked to setup a internet connection. If you have already connected the cat5e cable network status will be shown as "Healthy". If you have not connected the cat5e cable you may do so now, and click "auto config" to refresh the status.

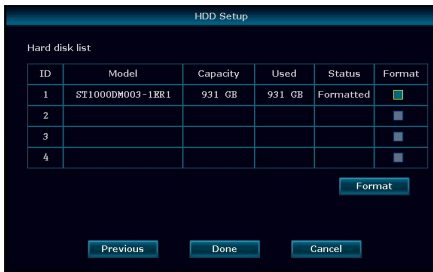
(This step is require for remote viewing)

### Default ID/Password

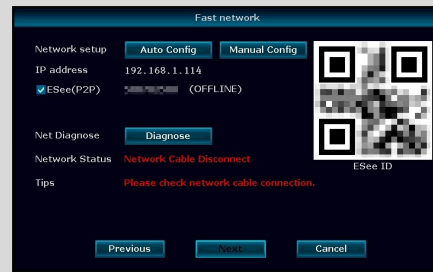
**Username:** admin

**Password:** (blank)

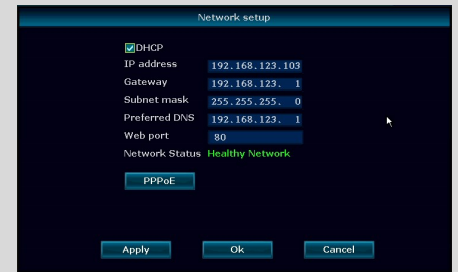




- Next on HDD setup check the status of the hard drive. If it shows as “Formatted” than it is ready to be used. Click “Done” to finish the setup.

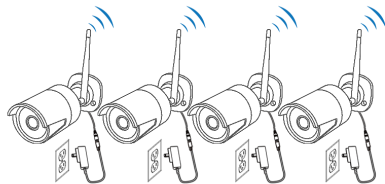


If you are having issue connecting to the internet please double check the cat5e cable and make sure it is plug to the router or modem correctly.

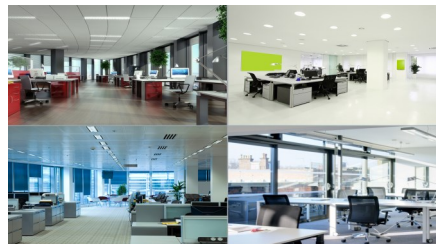


Advanced users can also manual config Network setting and configure the IP address.

### 3. Connecting Cameras



- Now power up all the cameras and wait about 30~90 sec to see if all the cameras gets connected.  
(If you have issue with camera connected please refer our troubleshoot at page #18)

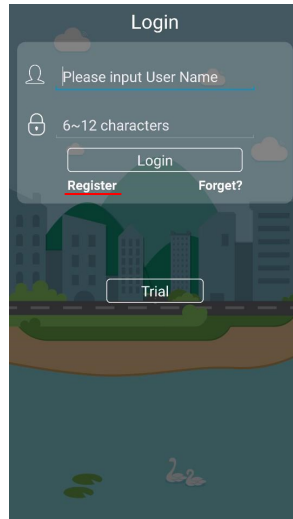


- Once you have test to see all the cameras are connected and working, you can now install the cameras in locations you want to view with included screw.

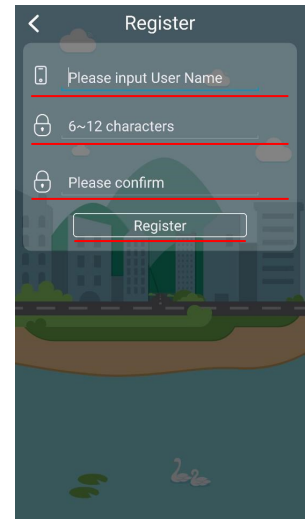
## 4. Smartphone Application



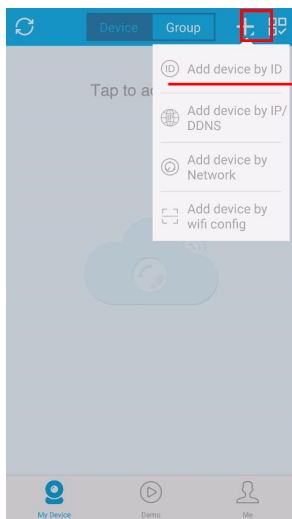
1. If you have not yet downloaded the applications you may do so now. Please go to the “App Store” or “Play Store” and search for “IP PRO” and install.



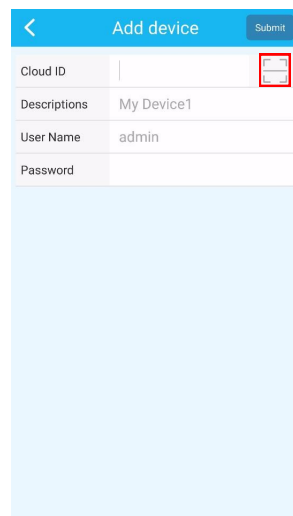
2. Once the installation is finish open up the IP PRO and touch “Register” to make a new account.  
(If you have already register please log in and skip to step 4)




3. Please input a user name and password (6~12 characters) and type the password one more time to confirm. Once you have finish touch register and you will get a pop up message to verify email. Please enter in your email and touch verify.



4. When you have log in touch the “+” on top right and “Add device by ID”



5. Touch the  icon to start the QR scanner.



6. You can find the QR code under (System setup > Network setup > show QR code).

Now scan the QR code using the app scanner and it will automatically input the “Cloud ID” for you.



< Add device Submit

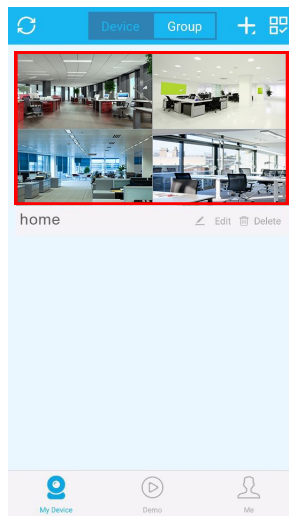
Cloud ID 123456789

Descriptions home

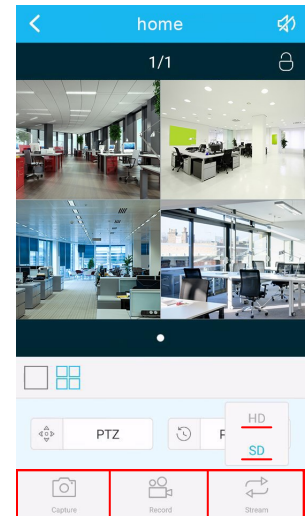
User Name admin

Password

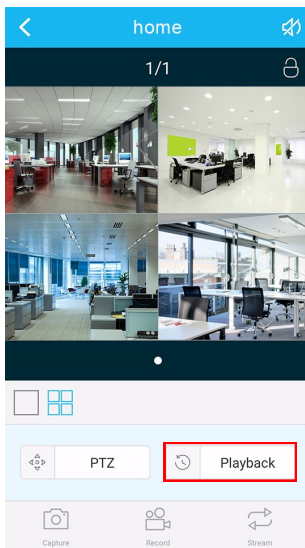
7. On the descriptions you can leave it as blank or enter the location information. (ex: home, office)
- Default  
User name: admin  
Password: (blank)
- Now touch submit to finish.



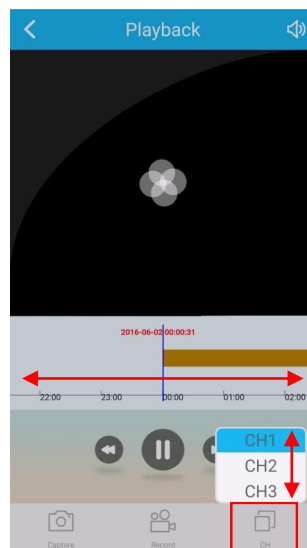
8. Now you can see the newly added list on the main page. Now you can touch the image and start the live view.



9. Within the live view you can choose the video quality by touch "Stream" and choose between "SD" (low quality) or "HD" (High quality).
- You can also take a snapshot or record short clips and save in the phone to view them later.

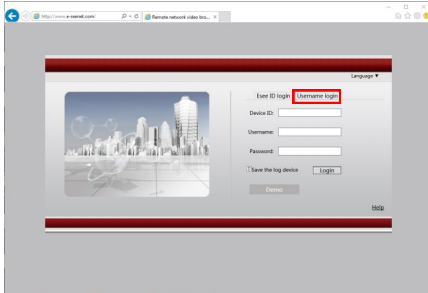


8. You can also view recorded video remotely using the "playback" button.

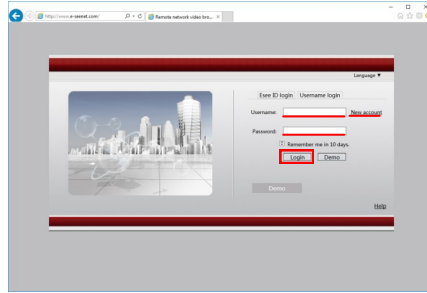


9. You can select the channel you want to playback using the "CH" icon on bottom right and select the channel. Once you have select the channel timeline will show up and you can slide left to right and select the time frame.

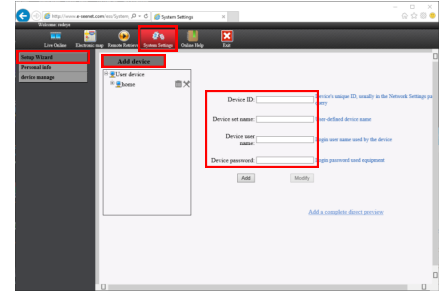
# 5. Web Viewer



1. Using the internet explorer go to “www.e-seenet.com”. Once you are at the log in screen click on “Username login”.

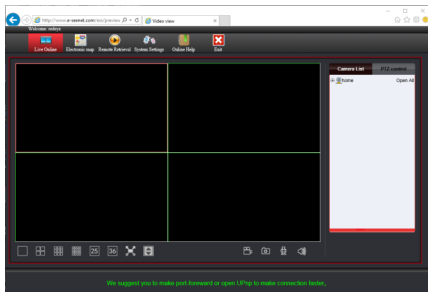


2. If you have not already made the account click on “New account” to make a new account. If you have made account using the smartphone application use the same ID/Password to log in to the website.

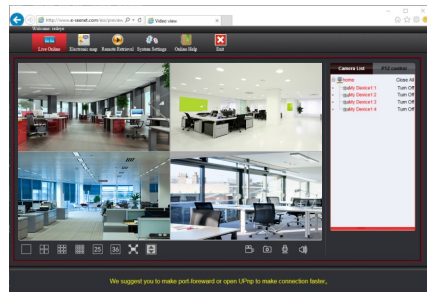


3. Once you log in it will ask you to add device. If it does not show automatically go to (system setup > setup wizard). Now click on “Add device” and enter in all the require information, which can be found in the (NVR system setup > Network setup).

If you have already add device skip to #4.



4. When your finish click on “Live Online” and on the right side you will be able to see the device you just added.



5. Under the camera list click on “Open All” to start the live remote view.

When your done viewing click on the “Exit” to log out.

NOTE: CMS Program is available for easy access from computer using Windows & Mac. For detail refer to CMS guide.

# System Menu

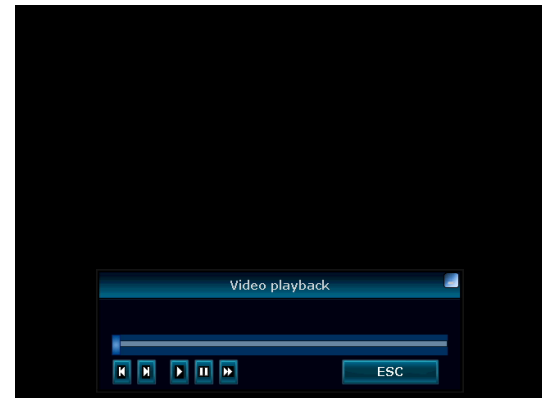
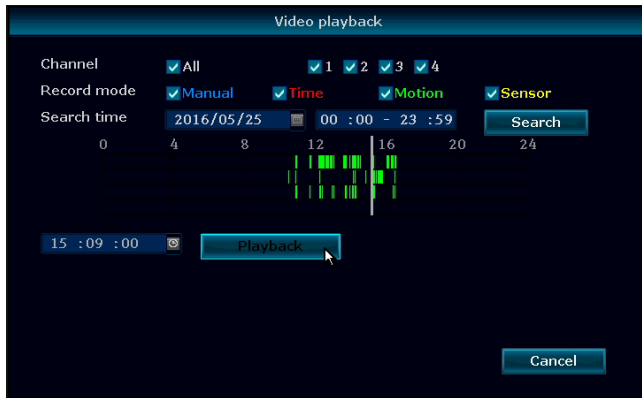
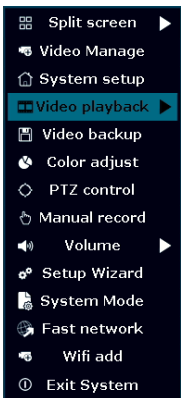
## 6. Menu Bar

Use the mouse and right click anywhere in the screen to bring up the menu bar








Split Screen	Choose between x1 or x4 view
Video Manage	Sync or add new IP camera
System Setup	Configure NVR system setting
Video Playback	Quick play back of 5, 10, 30 min or manual search
Video Backup	Backup recorded file to USB Flash Drive
Color Adjust	Adjust hue, brightness, saturation, and contrast
PTZ Control	Bring up digital PTZ controller for PTZ cameras (PTZ camera not included)
Manual Record	Force the system to record 24/7
Volume	N/A
Setup Wizard	Step by step setup guide
System Mode	N/A
Fast Network	Quick setup for network connection
Wifi Add	NVR Wifi information
Exit System	Log out, Reboot, Close Screen output, and Shutdown

# 7. Video Playback



1. Right click on the mouse to bring up the main menu.
2. Click "Video Playback" > "Manual Search"
3. Select the video channel you like to playback
4. Select the record mode (To search everything make sure to check all 4 box)
5. Select date and time and click search
6. Once you have click search it will show recorded sections on the timeline.
7. Click and drag the time bar or select using the time bar left of the Playback button.
8. Once you have selected the time click "Playback" to start
9. When your done click "ESC" to exit playback

## Video Playback Control

	Rewind 1 frame
	Play 1 frame
	Play
	Pause
	Fast Forward x2, x4, x8, x16, x32

## 8. Video Backup

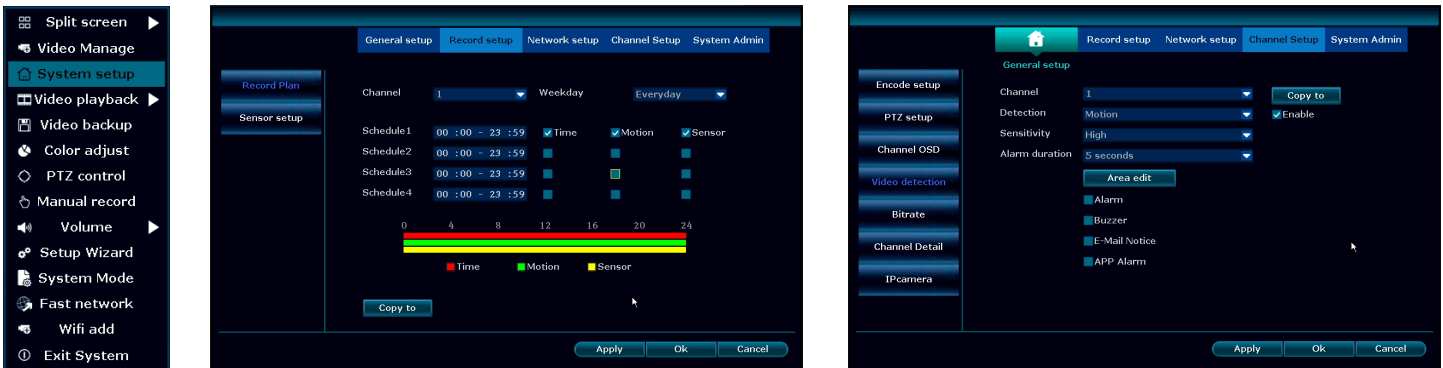


1. Right click on the mouse to bring up the main menu.
2. Click "Video backup"
3. First select the video channel you want to backup
4. Second select the "Record mode"
5. Third select the date and time you like to backup and click "Search"
6. Once you have click search, recorded date list will show up
7. Select the file you need to backup by checking the box on the right
8. Make sure you have USB Flash drive installed and Click "Video Backup"

NOTE: Support up to 32Gb Flash drive

Recording files are divided by one hour each

## 9. Record Setup



1. Right click on the mouse to bring up the main menu.
2. Click “System setup”
3. Click “Record setup”
4. On the “Record Plan” you set a recording schedule by Time, Motion, Sensor,  
(Time: record continually / Motion: record when motion is detected / Sensor: N/A)
5. Once you have setup the setting for one of the camera, you can copy the same setting to other cameras by clicking “Copy to” or you can setup each camera manually
6. For motion record you can also configure the sensitivity and area for each camera.
7. Click “Channel Setup” > “Video detection”
8. Here you can change the setting for sensitivity and area for motion detect recording.  
(Lowest: detects big motion to start the recording)  
(Highest: detects small motion to start the recording)
9. Click “Area edit” to select the areas you want the motions to be detected.  
(All the area are selected by default)
10. Once you have finish click “Ok” to save the setting

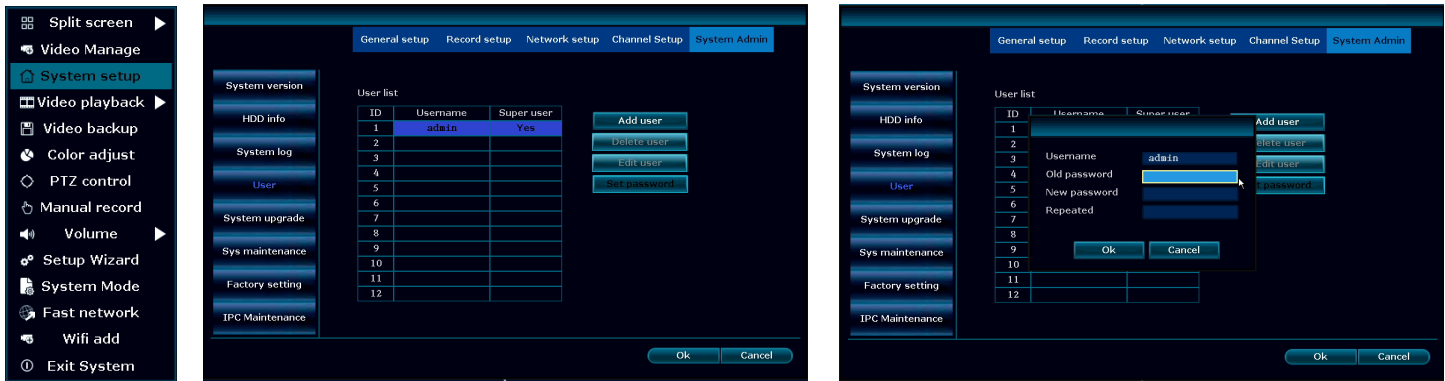
# 10. Generate Esee ID



1. Right click on the mouse to bring up the main menu.
2. Click “System setup”
3. Click “Network setup”
4. Check the “DHCP” to get IP address automatically.
5. Once you have checked the “DHCP” click “Apply” to save the setting
6. If you are connected “Network Status” will display “Healthy Network”
7. It will now display your Esee ID next to “ESee(P2P)”, you can also click on “Show QR Code” to display the QR Code.
8. When you are done click ok to save the setting and exit

**NOTE:** Esee ID is a unique ID for each NVR system. This ID is required to view remotely over the internet. Please do not share this information with other people.

# 11. Add & Edit User Account

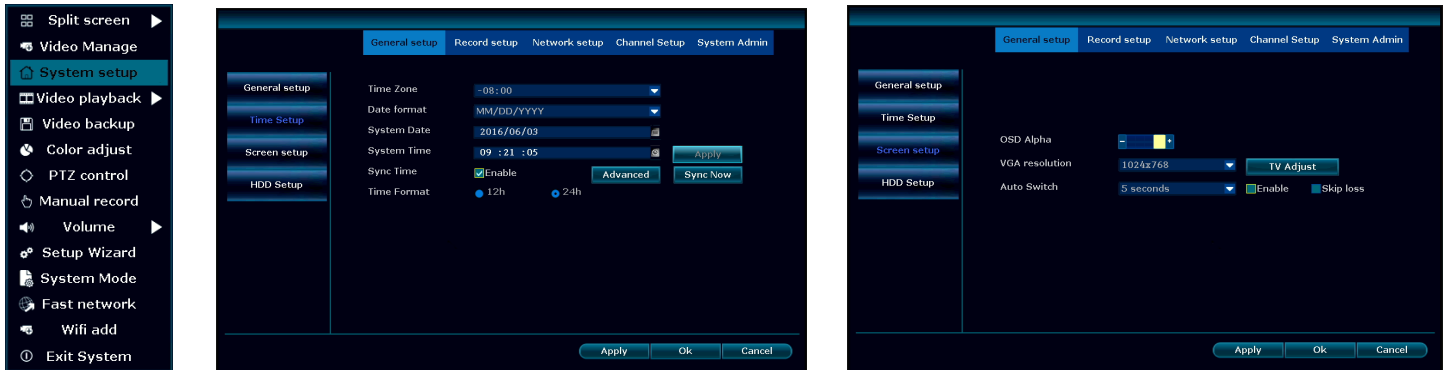


1. Right click on the mouse to bring up the main menu.
2. Click "System setup"
3. Click "System Admin"
4. Click "User"
5. To add a new user click "Add user"
6. Type in username, password and select the permissions that user can access than click "Ok"
7. To edit user select the user you will like to edit and click "Edit user". Edit the information you need and click ok to save
8. Once you are done with add & edit user click "Ok" to save and exit

**NOTE:** Admin account does not have any password by default, so please add new password by clicking "admin" and "Set Password". The old password is (blank) by default, so just type in your new password and click "Ok" to save.



## 12. Date / Time Setup



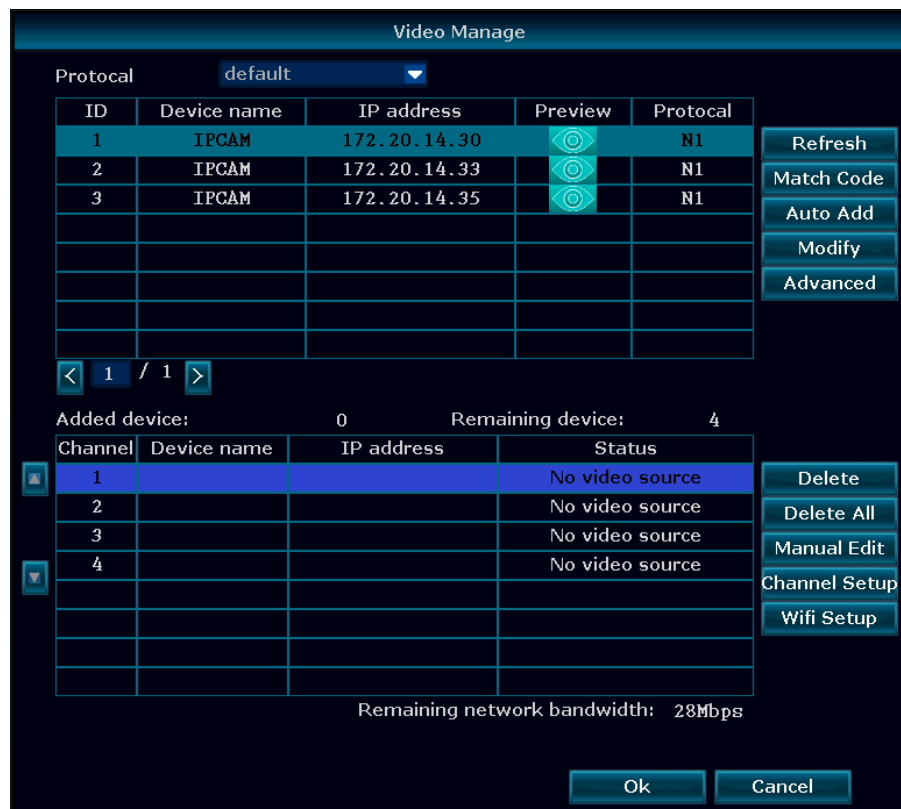
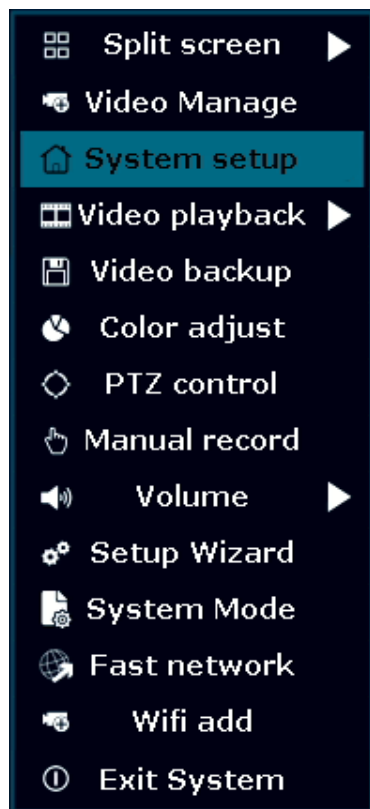
1. Right click on the mouse to bring up the main menu.
2. Click “System setup” > “General Setup” > “Time Setup”
3. If you have the NVR connected to the internet you may check the “Sync Time” to automatically sync the correct time.
4. If you do not like to sync time or have issue with internet you can uncheck “Sync Time” and manually setup the time
5. Select the “Time Zone” > “Date Format” > “System Date” > “System Time”
6. Once you have it set click “Ok” to save and exit

## 13. Display Setup

1. Right click on the mouse to bring up the main menu.
2. Click “System setup” > “General Setup” > “Screen Setup”
3. If you are using built-in screen we recommend using screen resolution of “1024x768”
4. If you are using external monitor using the HDMI out you may change the resolution depends on the resolution supports by the monitor.
5. Once you have the right resolution and everything is displaying correctly on the screen click “Ok” to save and exit

Note: If you setup the “VGA resolution” to higher resolution for built-in monitor the screen will get cut off or may not be adjust correctly. In case like this just go back to the “Screen setup” and change the “VGA resolution” back to 1024x768, and click “Ok” to save and exit.

# 14. Adding Camera By Matching Code



1. Right click on the mouse to bring up the main menu.
2. Click "Video Manage"
3. Use the LAN (CAT5) cable that came with the package to connect the "Camera" to the "NVR", and power up the connected camera.
4. Once you have the camera powered up and connected click "Refresh"  
(If nothing is showing up on the list change the "Protocol" to "N1" and click "Refresh")
5. Soon as the refresh finish you will get a list of camera with IP address of "172.20.14.xxx"
6. Select the camera you want to add and click "Match Code". This process will take about 30~60 sec.
7. Once match code is finish you can now unplug the LAN (CAT5) cable and it will be connected over wireless network.

Note: If there is already 4 camera on "Added device" you need to delete one of the camera to add new camera.

## 15. NVR Spec

Operation System	Embedded Linux OS	
NVR Channel	4 Channel	
Video Output	HDMI Output	1024x768, 1366x768, 1440x900, 1920x1080p
Video Resolution	720P	
Synch-Playback	4 Channel	
Video Control	Video / Capture mode	Manual / Time / Motion
	Playback mode	Real time / Manual / Motion
	Backup	USB Backup
HDD	Interface	1x SATA
	Max Capacity	4 TB Hard Drive
External Interface	Network Interface	RJ45 10M/100M (LAN)
	USB interface	USB 2.0 1x Front, 1x Back
Network Control	Protocol	UPnP (Plug & Play), SMTP (Email Notification), PPPoE (dial-up), DHCP (Automatically Obtain an IP Address), ETC...
Power	DC 12V 3A	
Consumption (without HDD)	<5 W	
Working Temperature	-10c ~ 55c	
Working Humidity	10% ~ 90%	
Size	258 x 210 x 42mm	
Weight (without HDD)	< 1Kg	

## 16. Camera Spec

---

<b>Mega Pixel</b>	1.0MP
<b>Operation System</b>	Embedded Linux
<b>Image Sensor</b>	1/4" Progressive Scan Sensor
<b>S/N Ratio</b>	> 39.1dB
<b>Resolution</b>	1280 x 720 (16:9) High Definition
<b>Minimum Illumination</b>	Color: 0.1 Lux, B/W: 0.1 Lux
<b>OSD</b>	Date, Time, Title
<b>White Balance</b>	Auto
<b>Day &amp; Night</b>	Auto / Color / BW
<b>3D-DNR</b>	Auto
<b>Mirror / Flip</b>	On / Off
<b>Privacy Regional Shelter</b>	4 Zone Selectable
<b>Stream</b>	Dual Stream 1280 x 720 @15fps 640 x 360 @15fps
<b>Anti-thunder Level</b>	Standard IEC61000-4-5
<b>Power</b>	DC12V 1A
<b>Consumption</b>	<6W
<b>Interface</b>	RJ45 / Wifi 802.11b/g/n
<b>Working Temperature / Humidity</b>	-10c ~ 50c / 30% ~ 80% RH
<b>Storage Temperature / Humidity</b>	-20c ~ 60c / 20% ~ 90% RH
<b>Size</b>	205 x 70 x 55mm
<b>Weight</b>	500g

## 17. Warranty Information

---

The system comes with 1 year manufactory warranty.

Warranty will be void for following issue:

1. Accident, Negligence, Disaster, Mis-Operation.
2. Damage cause by weather do to not sealing the wire connection or power adapter.
3. Damage cause by operating the NVR in high or low temperature area.
4. Getting system maintained by 3rd party technician.
5. Exchange of 3rd party parts (Ex: Hard drive, antenna, power adapter, etc...)
6. Expiration of warranty period

## 18. References & Contact Information

---

For a detailed operational introduction, please refer to our website at: [www.cvtus.com](http://www.cvtus.com)

This guide is for reference only. Slight differences may be found in the user interface.

All the designs and software here are subject to change without prior written notice.

All trademarks and registered trademarks mentioned are the properties of their respective owners.

If you have any questions or concerns, please contact us at [support@cvtus.com](mailto:support@cvtus.com).