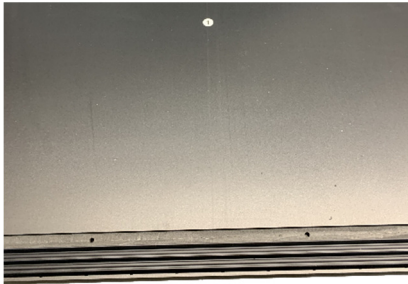




## Evolution Series – Assembly Instructions



1. Place the bottom of the enclosure (part # 1) on a table, bench or other slightly elevated surface. This is to allow space for you to screw the sides onto the bottom panel. Make sure the lower door tracks are at the front (facing you).



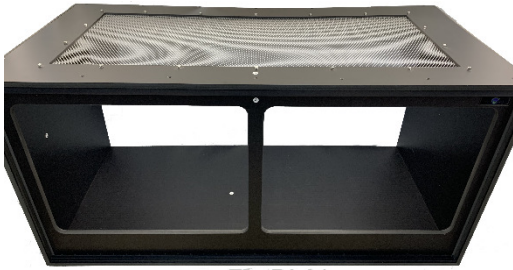
2. Now take one of the sides (part # 2) and position it at 90 degrees on the left, making sure it's lined up with the bottom before adding the screws. **As we pre-assemble these enclosures, please dial down any drills to the lowest clutch setting in order to not over tighten the screws. We recommend tightening by hand with a Philips head screwdriver for best results.**



3. Now repeat step 2 by adding part # 3 to the right side of the bottom panel.



4. Now slide part # 4 between the sides making sure it's situated inside the grooves and then add the side screws.



5. The top (part # 5) can now be positioned onto the enclosure and secured in place. Please make sure it's positioned in the recessed slots before adding the screws.



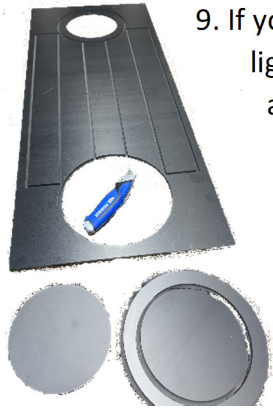
6. Place the last part (part # 6) into the slots at the back of your enclosure and screw in place to finish the screw assembly.



7. Now that your Enclosure is screwed together, you can add the two side tracks by peeling back the PSA tape and inserting them into the side slots as shown. Be sure to squeeze firmly to make sure they are stuck in place.

8. Your new enclosure is now ready to position in its permanent location and decorate, before adding the polycarbonate doors. To add the doors, place the rear door in the rear track and the front door in the front track.

You can now also add the clear door pulls onto the doors as well as the lock.



9. If you are wanting a higher humidity level for your pet's enclosure, you can cut around the light panels on our Humidity Control Panel with a sharp knife as shown to increase airflow and allow for your own preferred setup.

Thank you for purchasing and supporting Maximum Reptile™

