



Charge It Basket

A Dani Sue Creations Original
Designed by: Danielle Anderson



Materials:

15.5" X 5" Wooden rectangle slotted base and 4 1" ball feet with screws.
#3 Natural Round Reed (RR)
1/4" Natural Flat Flat or Flat Oval Reed
3/8" Natural and Dyed Flat Flat Reed
1/2" Natural Flat Flat & Flat Oval Reed
5/8" Natural Flat Flat Reed
#3 Seagrass
5mm Cane

Staves:

From 1/2" Natural FF Reed cut:
38 Staves @ 11" long

Finished Basket Dimensions

7.5" tall, diameter 17" x 9", 44" circumference
Cut kits for 49"

NOTE: To create the opening in the back of the basket, we will weave the 7th and 8th rows of our basket extra-long. For a DSC basket, we normally only weave over 1 stave and cut to hide behind the neighboring stave to the right. (Meaning we will weave over 1 stave, behind 1, over 1, behind 1, then cut). We will begin and end those rows as close to the center stave as our start/stop weaving allows. There is a tutorial video to go with this basket, and it coordinates well with the written pattern. If you do not have the video, please contact Dani and she will provide it.

It is easiest to attach your ball feet before you begin your project. Work with your base flat on your workspace with the ball feet facing you. Mark the centers of your base. Then, attach all four ball feet.

Wet all Natural Staves.

For this basket, we have a total of 38 staves. We want 4 staves on each end (8 total), plus 1 staff in each corner, or 4 total staves in the corners. That's $38 - 12 = 26$ staves left. So that tells us 13 staves need to be inserted on each long side of our base.

Once you have 38 staves distributed evenly and with the inside of your base flat on the table, it's time to **twine 3** rows natural RR around your base, making sure to step up at the end of each row.

Now it's time to upset your basket. You will begin weaving by using the Start/Stop Method.

Weave:

3 rows of 1/4" Natural FF or FO Reed.
3 rows of 3/8" Natural FF Reed.

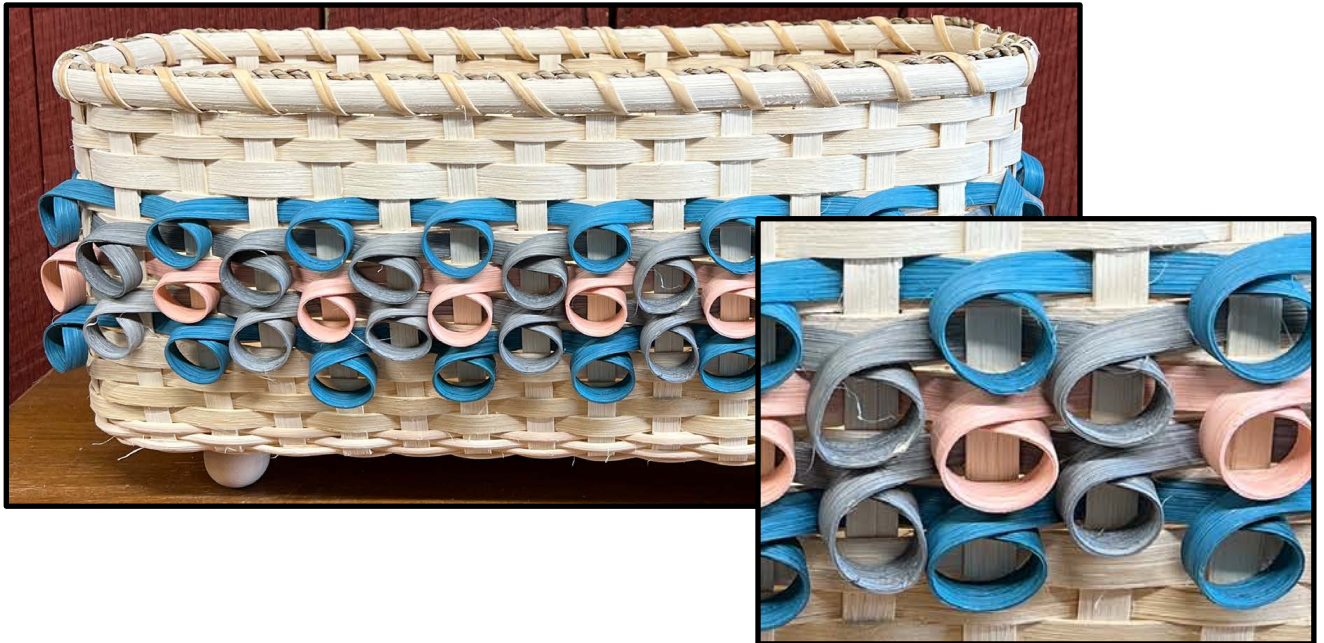
Beginning on or next to the center staff in the **BACK** of your basket (just pick a side to be the back), weave 1 row 5/8" FF (or row 7) with extra overlapping, as mentioned in the Note section.

Weave 1 row 1/2" FF (or row 8) on or next to the back center staff, leaving extra room on the end for the square cut out. The cut out will be one of the very last things we do. This row and the 5/8" row before it are the only 2 rows that need extra length. They are also the only ones that need to start in the center of the back of your basket.



Now you get to add loops. Pick the color you want, and add your loops to the 1/2" row you just wove in. Notice in the picture above your dyed 3/8" reed starts at the corner of the back of your basket.

It's "choose your own adventure" when it comes to the size of your loops. You can see in the picture below, and then closer on the smaller picture to the right, that I let my loops take up the space of the stave the loop is sitting on. I think that makes for a fun stacking look, with the loops on top of one another. The loops are all about your preference, as they do not affect the structural integrity of your basket.



You will continue to weave a 1/2" FF natural row, then add your row of loops. You will do this for a total of 5 rows.

After the 5 rows of loops, it's time to weave one row of 5/8" FF, and then 3 rows of 3/8" natural FF. The third row of 3/8" is the hidden/rim row of the basket.

For the Rim:

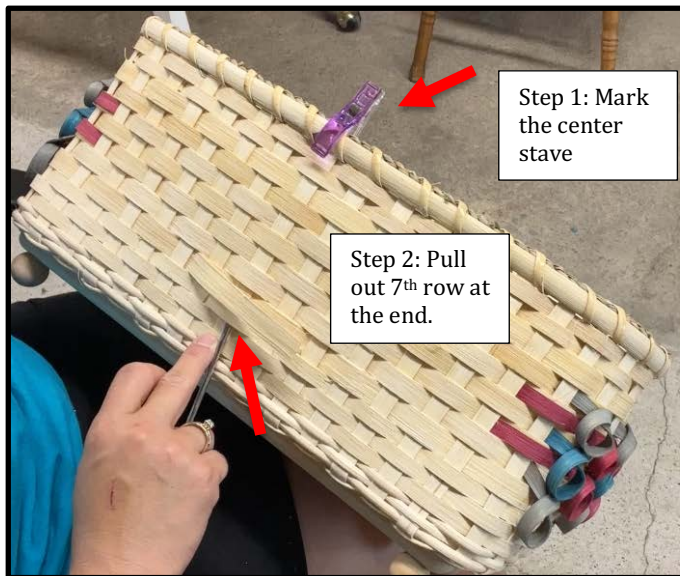
Cut and tuck your staves.

Using 1/2" Natural FO Reed for your rim, place the inside rim first, and then the outside piece. Let both rim pieces overlap approximately an inch. Sandwich in one piece of #3 seagrass. I use clips to hold the rim together, until I get both inside and outside rim pieces and the seagrass placed. Then, I tightly secure the rim with zip ties to hold the pieces together while I lace with cane.

The Square Opening:

Step 1:

Find the center stave in the back of your basket. See the purple clip on the picture below. This is my center stave.

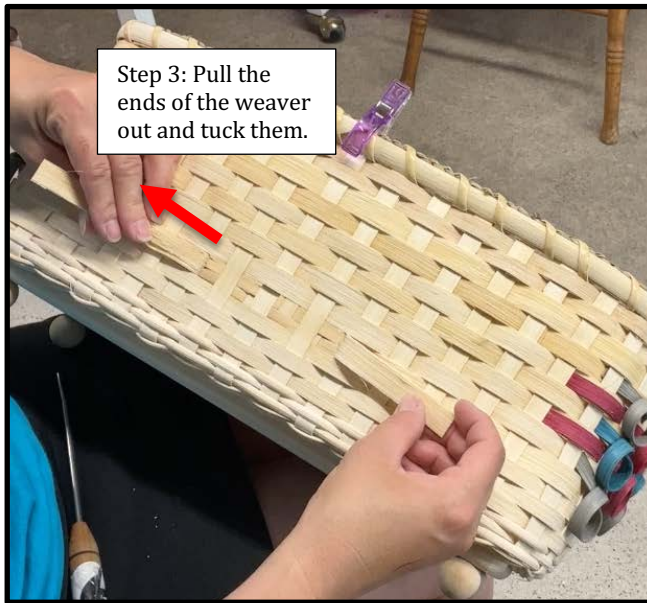


Step 2:

The 7th woven FF row from the bottom is the first row we made extra long. Pull the end out of that row. See the picture above.

Step 3:

On the picture below, you can see both ends of the 7th row from the bottom pulled out. You are simply going to fold those ends over and cut them. HOWEVER, if your row is over the center stave instead of under, then you will switch steps 3 and 4 because it all depends on which row is over or under your center stave. BUT the premise is the same. One of the rows will fold over the staves on each side and tuck; and the other row you will need to chicken feet and tuck. Note: Remember there is a tutorial video to accompany this pattern.



This picture shows the ends of the tucked row.



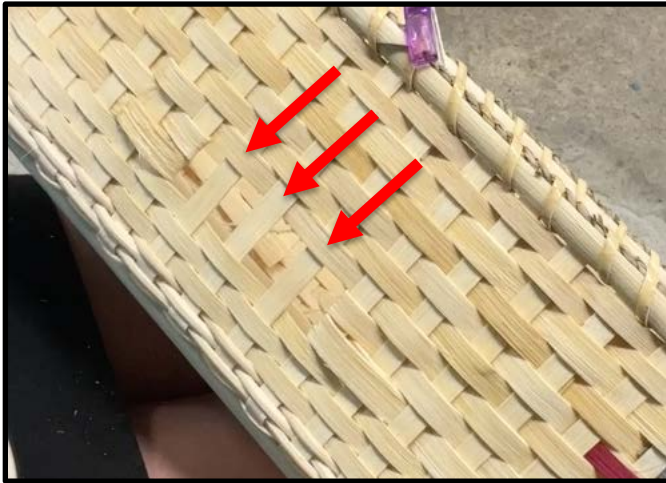
Step 4:

Both ends of the row fold back, and you split the stave down the center, so you have 2 ends to tuck.



Step 5:

We have 3 staves standing for step 5. Simply cut the top of the staff off, flush with the 9th row. Then, tuck the remaining part of the staff to either the inside or outside of your basket.



The picture below is what the opening in the back of the basket will look like completed. Keep in mind that your chicken feet might be on the outside of your basket. It all depends on if your 7th row is over or under your center staff.



I hope you enjoy The Charge It Basket, and the change of pace this basket gives you in your home - out of sight and out of mind, until we bring those tech things out of timeout.

For bases, wood working and much more, contact Tony Heady at Bagdad Lumber
twheady@icloud.com or go to <http://www.bagdadlumberandlaser.com/>

Be sure to visit www.DaniSueCreations.com for the latest basket creations for classes, patterns, convention information and more. Please like us on FB under Dani Sue Creations. Don't hesitate to email or call with any questions regarding permission to distribute this pattern, or any other DSC products at danisuecreations@gmail.com or (502) 797-9988