

1.0 Reference and Address			
Report Number	230800161SHA-001	Original Issued: 13-Sep-2023	Revised: None
Standard(s)	Electric Fans [UL 507:2017 Ed.10+R:22Jun2022] Fans and Ventilators [CSA C22.2#113:2018 Ed.11]		
Applicant	Dongguan PureMate Technology Co., Ltd.	Manufacturer	Dongguan PureMate Technology Co., Ltd.
Address	Building No.4, Haiyong Technology Park, Xiawei Shenwo Industrial Zone, Zhutang Village, Fenggang Town, Dongguan City, Guangdong Province	Address	Building No.4, Haiyong Technology Park, Xiawei Shenwo Industrial Zone, Zhutang Village, Fenggang Town, Dongguan City, Guangdong Province
Country	China	Country	China
Contact	Yiping Li	Contact	Yiping Li
Phone	+86-18666892160	Phone	+86-18666892160
FAX	NA	FAX	NA
Email	Test1@puremate.cn	Email	Test1@puremate.cn

2.0 Product Description	
Product	Air Purifier
Brand name	PureMate
Description	The product covered by this report is air purifier intended for household and indoor use only. It cleans the air by means of carbon pre-filter and HEPA filter. It is connected to the power supply through a detachable supply cord set.
Models	PM1928B
Model Similarity	N/A
Ratings	120V, 60Hz, 1.9A, 150W
Other Ratings	N/A

3.0 Product Photographs

Photo 1 - Front view



Photo 2 -Side view



3.0 Product Photographs

Photo 3 - Rear view



Photo 4 - Side view



3.0 Product Photographs

Photo 5 - Internal view with filter removed



Photo 6 - Top view



3.0 Product Photographs

Photo 7 - Bottom view

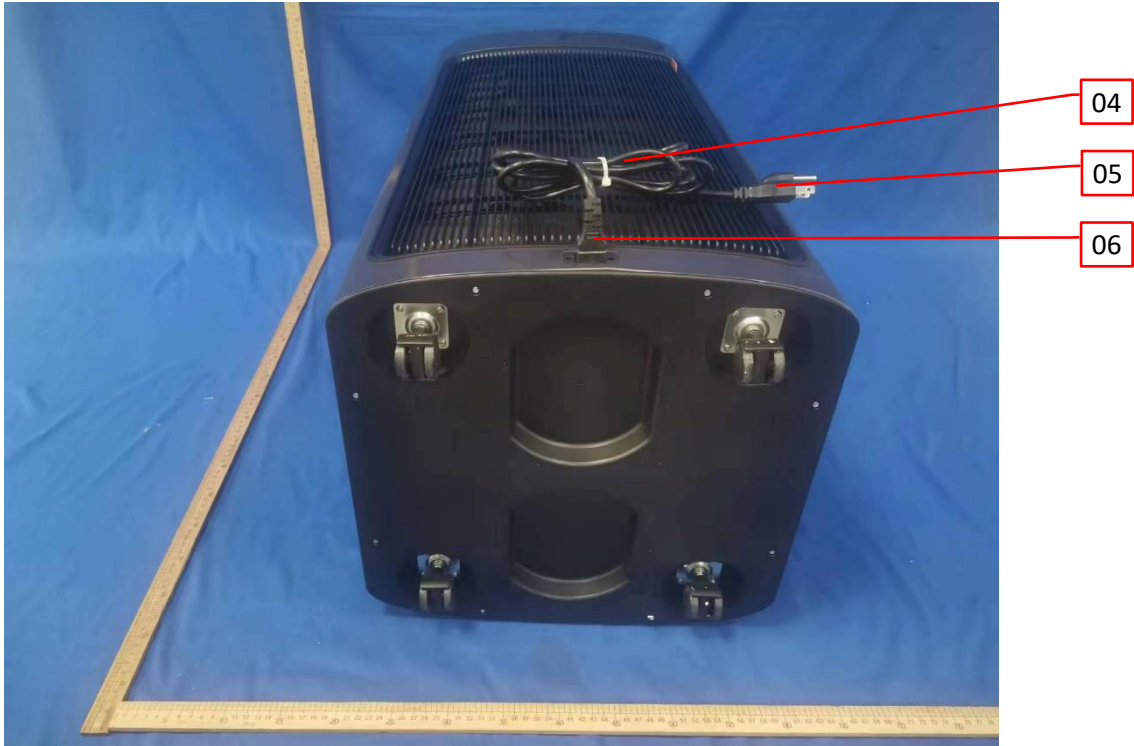


Photo 8 - Appliance inlet view

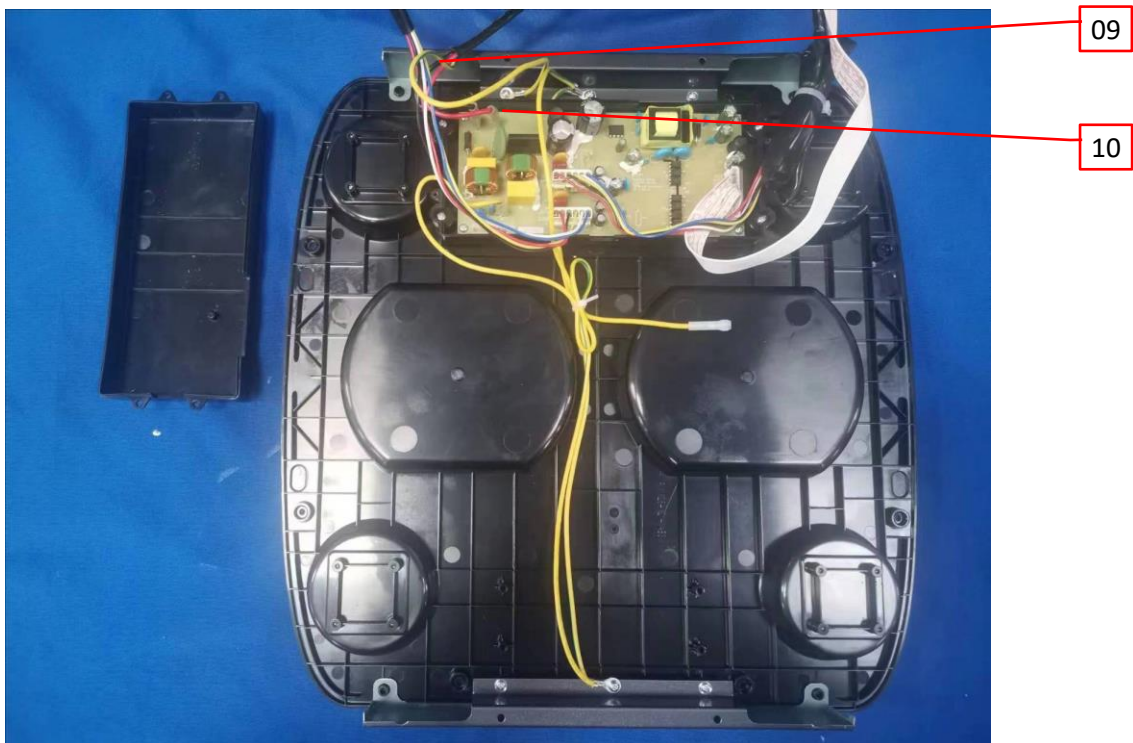


3.0 Product Photographs

Photo 9 - Internal view



Photo 10 - Internal view



3.0 Product Photographs

Photo 11 - Front view of main PCB

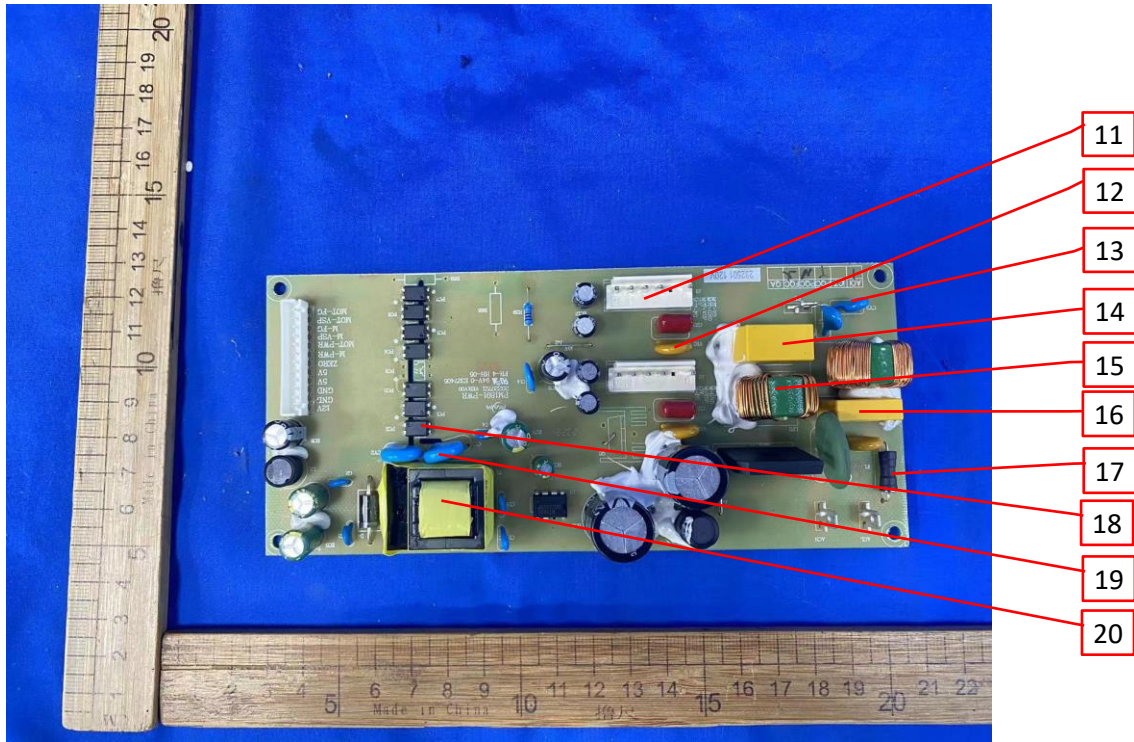
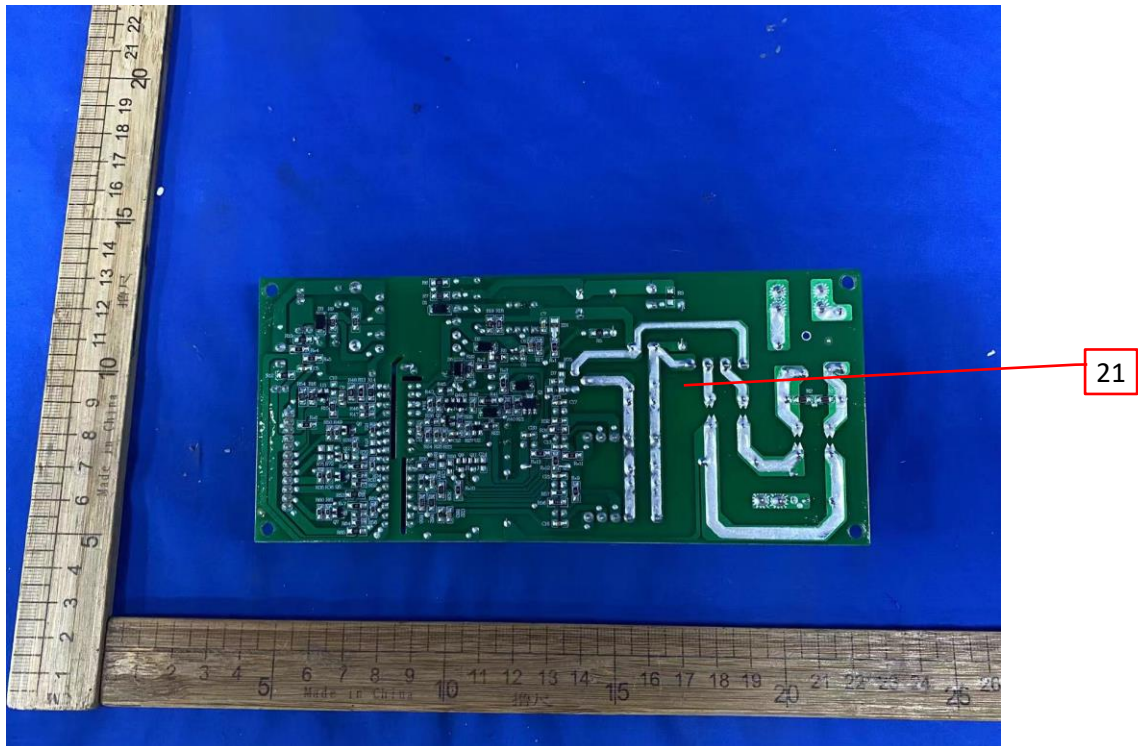


Photo 12 - Rear view of main PCB



3.0 Product Photographs

Photo 13 - Internal view



Photo 14 - Internal view



3.0 Product Photographs

Photo 15 - Internal view



Photo 16 - Internal view



3.0 Product Photographs

Photo 17 - Internal view



Photo 18 - Internal view

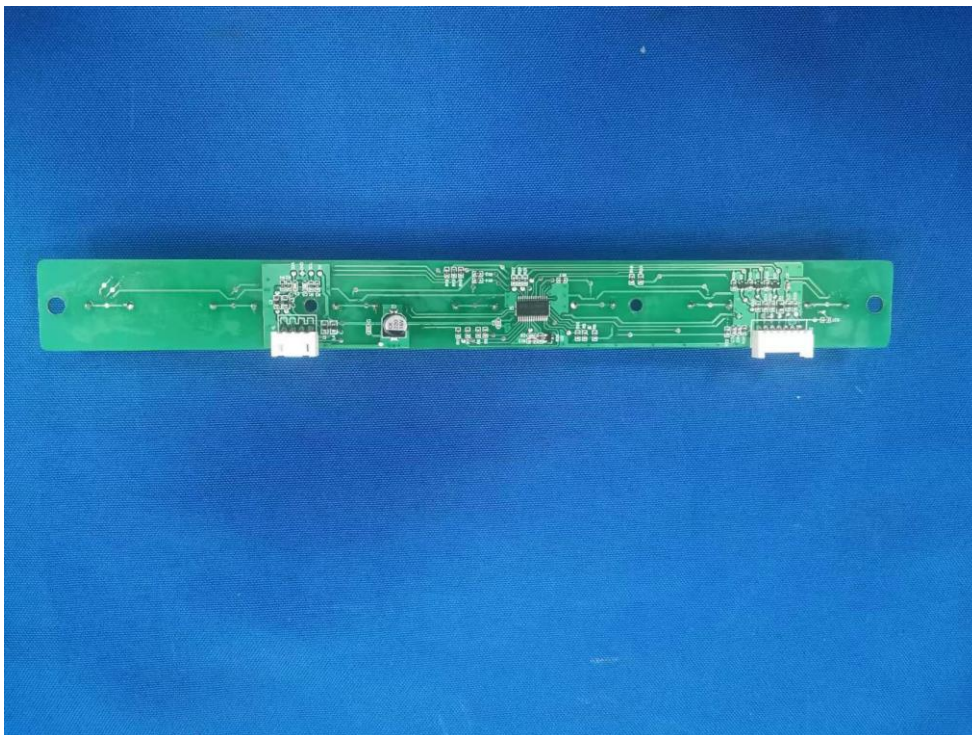


3.0 Product Photographs

Photo 19 - PCB of keyboard view



Photo 20 - PCB of keyboard view



3.0 Product Photographs

Photo 21 - Control PCB view

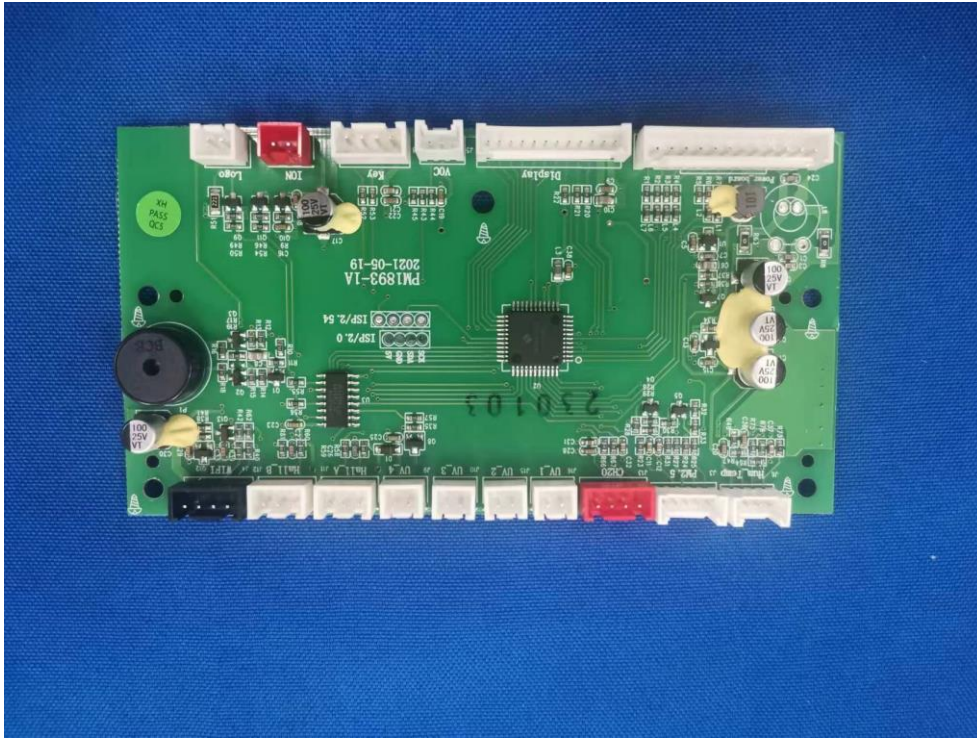
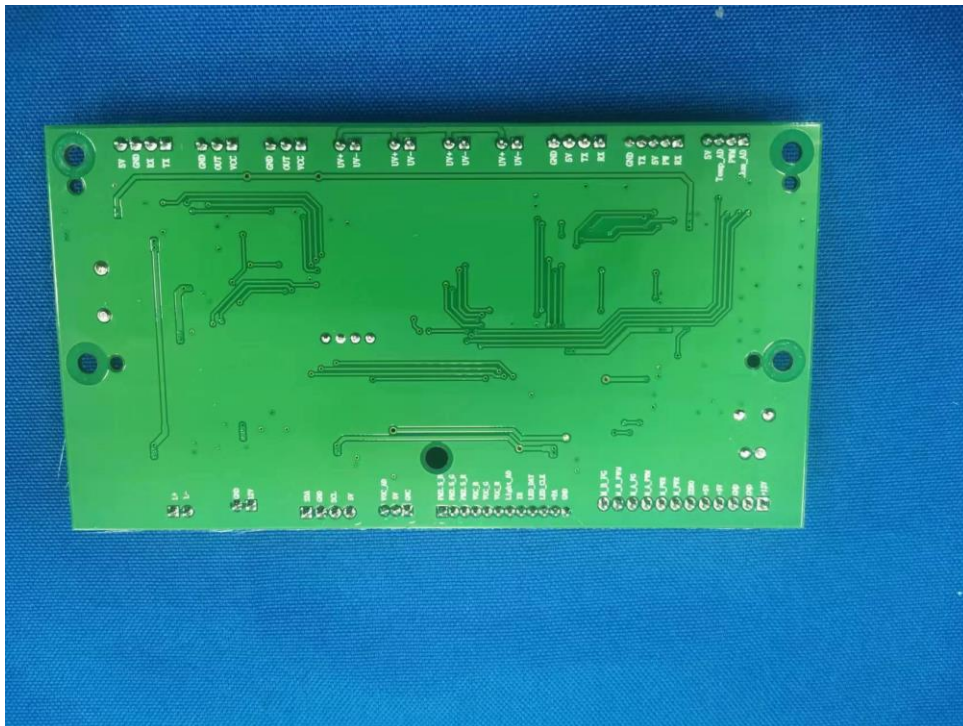


Photo 22 - Control PCB view

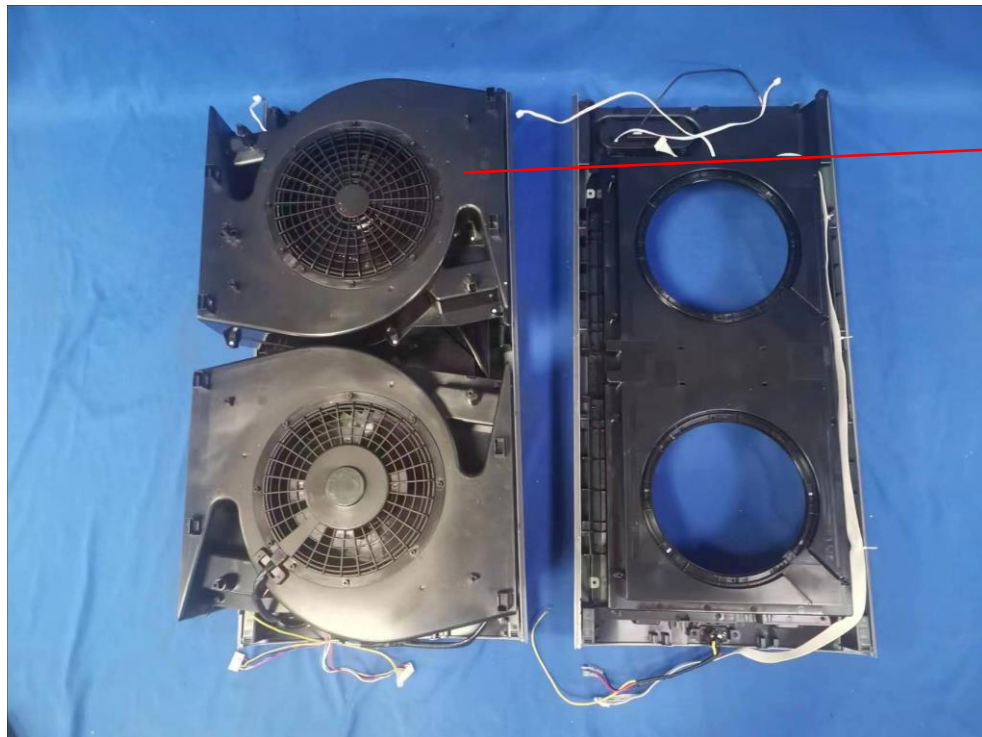


3.0 Product Photographs

Photo 23 - Internal view



Photo 24 - Internal view



3.0 Product Photographs

Photo 25 - Internal view



Photo 26 - Internal view



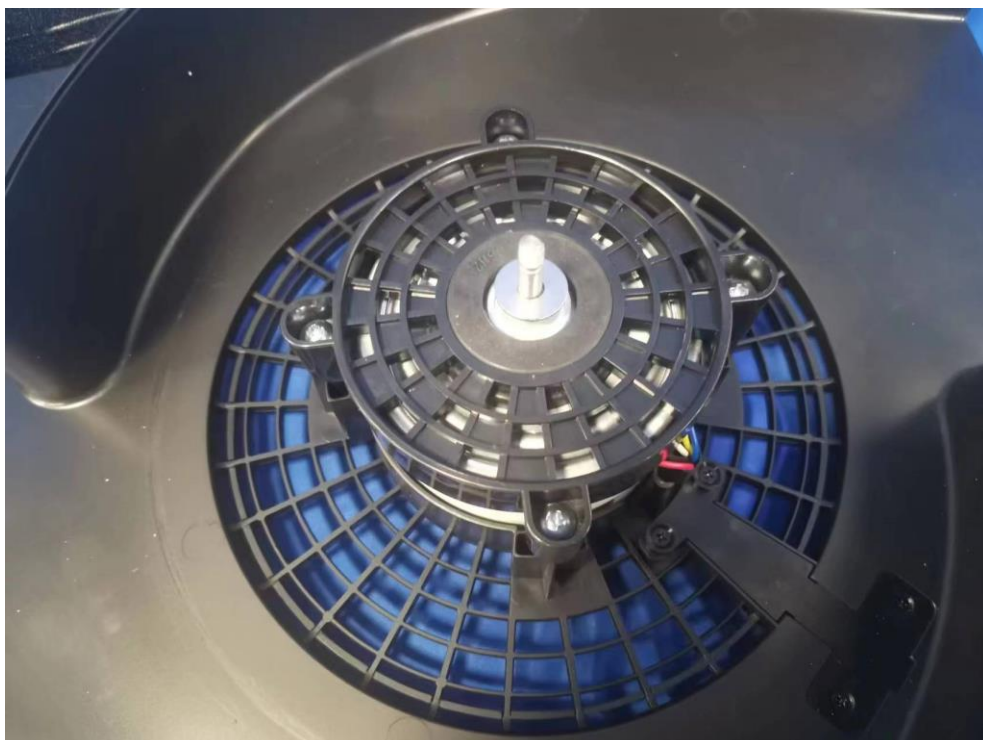
24

3.0 Product Photographs

Photo 27 - Internal view



Photo 28 - Fan motor view

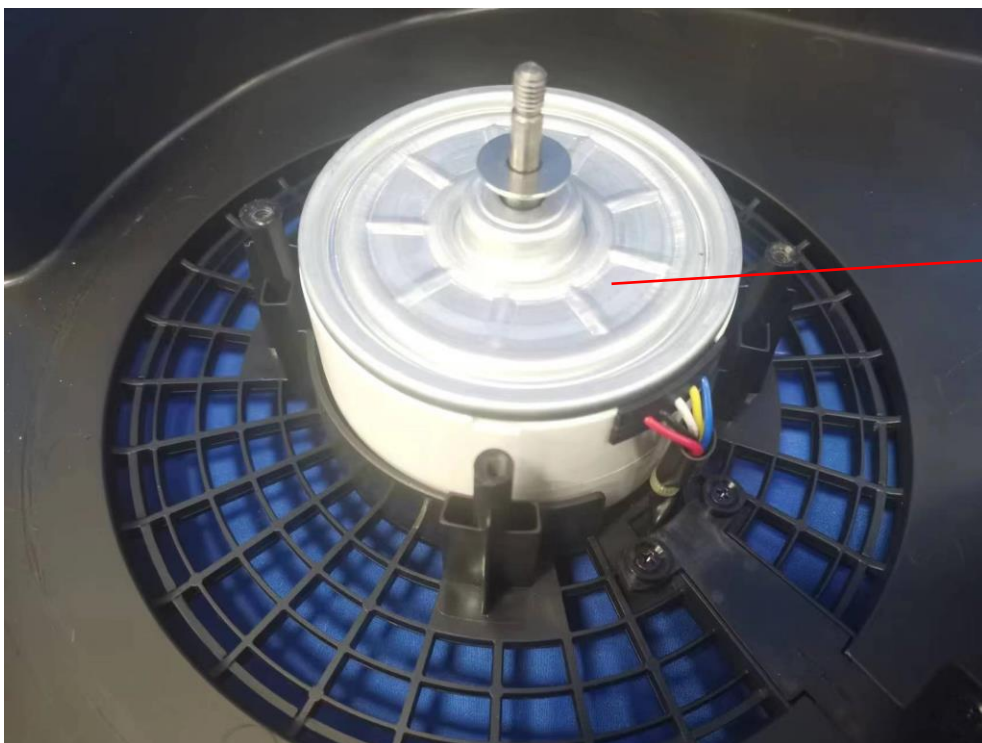


3.0 Product Photographs

Photo 29 - Internal view



Photo 30 - Internal view



25

4.0 Critical Components						
Photo #	Item no.1	Name	Manufacturer/ trademark ²	Type / model ²	Technical data and securement means	Mark(s) of conformity ³
1	1	Metal Enclosure	Various	Various	Galvanized steel sheet, min. thickness: 0.8mm	NR
1	2	Plastics enclosure	CHI MEI CORPORATION (E56070)	PA-757(+)	ABS, HB, HWI 4, HAI 0, RTI 80, Min. thk.: 2.8mm.	cURus
				PA-765(+)	ABS, V-0, HWI 2, HAI 0, RTI 80, Min. thk.: 2.8mm.	cURus
				PW-957(+)(f1)	ASA, V-0, HWI 3, HAI 0, RTI 50, Min. thk.: 2.8mm.	cURus
			FORMOSA CHEMICALS & FIBRE CORP PLASTICS DIV (E162823)	AG15A1	ABS, HB, HWI 4, HAI 0, RTI 85, Min. thk.: 2.8mm.	cURus
				WF3301(f1)	ABS, HB, HWI 4, HAI 0, RTI 50, Min. thk.: 2.8mm.	cURus
			KINGFA SCI & TECH CO LTD (E171666)	PA66-RNG00(r4)(##)(f1)	PA66, V-0, HWI 4, HAI 0, RTI 110, Min. thk.: 2.8mm.	cURus
				PA66-RG(00)1	PA66, V-0, HWI 3, HAI 0, RTI 65, Min. thk.: 2.8mm.	cURus
			SHENZHEN FUHENG NEW MATERIAL CO LTD(E234833)	HIPS-568	PS, HB, RTI 50, Min. thk.:2.8mm.	cURus
			5	3	Fan frame	CHI MEI CORPORATION (E56070)
PA-765(+)	ABS, V-0, HWI 2, HAI 0, RTI 80, Min. thk.: 2.5mm.	cURus				
PW-957(+)(f1)	ASA, V-0, HWI 3, HAI 0, RTI 50, Min. thk.: 2.5mm.	cURus				
FORMOSA CHEMICALS & FIBRE CORP PLASTICS DIV (E162823)	AG15A1	ABS, HB, HWI 4, HAI 0, RTI 85, Min. thk.: 2.8mm.				cURus
	WF3301(f1)	ABS, HB, HWI 4, HAI 0, RTI 50, Min. thk.: 2.8mm.				cURus
KINGFA SCI & TECH CO LTD (E171666)	PA66-RNG00(r4)(##)(f1)	PA66, V-0, HWI 4, HAI 0, RTI 110 Min. thk.: 2.8mm.				cURus
	PA66-RG(00)1	PA66, V-0, HWI 3, HAI 0, RTI 65, Min. thk.: 2.8mm.				cURus
SHENZHEN FUHENG NEW MATERIAL CO LTD(E234833)	HIPS-568	PS, HB, RTI 50, Min. thk.:2.8mm.				cURus
7	4	Supply cord				NEW SQUARE CO LTD (E138787)
			DONG GUAN CHUANG XU WIRE CO.LTD (E497540)	SVT	300V, 3X18AWG, 105°C.	cURus

4.0 Critical Components						
Photo #	Item no. ¹	Name	Manufacturer/ trademark ²	Type / model ²	Technical data and securement means	Mark(s) of conformity ³
7	5	Plug	NEW SQUARE CO LTD (E138787)	NS-3P-C	5-15P, 125V, 10A.	cURus
			DONG GUAN CHUANG XU WIRE CO LTD (E498216)	CX-03	5-15P, 125V, 10A	cURus
7	6	Connector	NEW SQUARE CO LTD (E138787)	NS-26	125V, 10A	cURus
			Dong guan Chuang Xu Wire Co.Ltd (E498216)	CX-26	125V, 7A	cURus
8	7	Appliance coupler	YUEQING YANHUI ELECTRONIC CO LTD (E334847)	DB-14-S	250V, 5A.	cURus
9	8	PWB box	CHI MEI CORPORATION (E56070)	PA-765(+)	ABS, 5VA, HWI 2, HAI 0, RTI 80, Min. thk.: 2.3mm.	cURus
			ASCEND PERFORMANCE MATERIALS, LLC (E70062)	FR350J (e)	PA66, 5VA, HWI 0, HAI 0, RTI 65, Min. thk.: 2.3mm.	cURus
10	9	Internal wire	Various	1015	18AWG, VW-1, 600V, 105°C.	cURus
10	10	Terminal connector with sleeving	POWER ACT ENTERPRISES LTD (E203154)	LS1890802	Suitable for wire sized #18-22AWG. For mating tab with 0.8mm thick, 4.8mm width. Protected by the sleeving, Model Series FP by FOSHAN FANGPU DIPPING TECHNOLOGY CO LTD (E185679), rated 600V, 105°C, VW-1; Model DF(D)250-3.5 by YUEQING TIANDA ELECTRONIC SHEATH CO LTD (E233894), rated 600V, 90°C, VW-1.	cURus
11	11	Quick connector	ZHEJIANG KUAILI ELECTRONICS CO LTD (E307817)	KLVH3.96	Suitable fo 18~22AWG.	cURus
			FAMFULL ELETRONICS CO LTD (E241222)	VH-6A	Suitable fo 18-22AWG.	cURus

4.0 Critical Components						
Photo #	Item no. ¹	Name	Manufacturer/ trademark ²	Type / model ²	Technical data and securement means	Mark(s) of conformity ³
11	12	Varistor (VR1, VR2, VR3)	SHANTOU HIGH-NEW TECHNOLOGY DEVELOPMNT ZONE SONGTIAN ENTERPRISE CO LTD (E330837)	10D271K	270V, 125°C.	cURus
			THINKING ELECTRONIC INDUSTRIAL CO LTD (E314979)	TVR10271	270V, 125°C.	cURus
			CERGLASS MFG INC (E317616)	10D271K	270V, 125°C.	cURus
11	13	Y capacitor (CY3, CY4)	SHANTOU HIGHNEW TECHNOLOGY DEVELOPMNT ZONE SONGTIAN ENTERPRISE CO LTD (E208107)	CD	Min.400V, 2200pF, 125°C, type Y1	cURus
			JYH HSU (JEC) ELECTRONICS LTD (E356696)	JY	Min.300V, 2200pF, 125°C, type Y1	cURus
				JD	Min.400V, 2200pF, 125°C, type Y1	cURus
			SUCCESS ELECTRONICS CO LTD (E114280)	SE	Min.250V, 2200pF, 125°C, type Y1	cURus
			GUANGDONG SOUTH HONGMING ELECTRONIC SCIENCE & TECHNOLOGY CO LTD (E154899)	F	Min.250V, 2200pF, 125°C, type Y1	cURus

4.0 Critical Components						
Photo #	Item no. ¹	Name	Manufacturer/ trademark ²	Type / model ²	Technical data and securement means	Mark(s) of conformity ³
11	14	X-capacitor (CZ2)	DAIN ELECTRONICS CO LTD (E147776)	MPX	Min.275V, 0.47μF, X2 type, 100 or 110°C.	cURus
			WINDAY ELECTRONIC (DONG GUAN) CO LTD (E302125)	MPX	Min.275V, 0.47μF, X2 type, 100 or 110°C.	cURus
			GUANGDONG FENGMING ELECTRONIC TECH CO LTD (E345487)	MKP-X2	Min.275V, 0.47μF, X2 type, 105°C.	cURus
			SHANTOU HIGH-NEW TECHNOLOGY DEVELOPMNT ZONE SONGTIAN ENTERPRISE CO LTD (E208107)	MPX	Min.275V, 0.47μF, X2 type, 110°C.	cURus
11	15	Line-Filter (LF1, LF2)	Foshan Shunde Qiaojing Electronics Co., Ltd.	LK	30mH for LF1, 3mH for LF2.	NR
11	16	X-capacitor (CZ1)	DAIN ELECTRONICS CO LTD (E147776)	MPX	Min.275V, 0.1μF, X2 type, 100 or 110°C.	cURus
			WINDAY ELECTRONIC (DONG GUAN) CO LTD (E302125)	MPX	Min.275V, 0.1μF, X2 type, 100 or 110°C.	cURus
			GUANGDONG FENGMING ELECTRONIC TECH CO LTD (E345487)	MKP-X2	Min.275V, 0.1μF, X2 type, 105°C.	cURus
			SHANTOU HIGH-NEW TECHNOLOGY DEVELOPMNT ZONE SONGTIAN ENTERPRISE CO LTD (E208107)	MPX	Min.275V, 0.1μF, X2 type, 110°C.	cURus

4.0 Critical Components						
Photo #	Item no.1	Name	Manufacturer/ trademark ²	Type / model ²	Technical data and securement means	Mark(s) of conformity ³
11	17	Fuse	XC ELECTRONIC (SHENZHEN) CORP LTD (E249609)	3T	250V, 3.15A.	cURus
			SHENZHEN LANSON ELECTRONICS CO LTD (E221465)	3K	250V, 3.15A.	cURus
11	18	Optocoupler (PC1-PC7)	EVERLIGHT ELECTRONICS CO LTD (E214129)	EL817	5000V, Reinforced insulation	cURus
			SHARP CORP ELECTRONIC COMPONENTS AND DEVICES BU (E64380)	PC817	5000V, Reinforced insulation	cURus
			LITE-ON TECHNOLOGY CORP (E113898)	LTV-817	5000V, Reinforced insulation	cURus
11	19	Y capacitor (CY1, CY2)	SHANTOU HIGHNEW TECHNOLOGY DEVELOPMNT ZONE SONGTIAN ENTERPRISE CO LTD (E208107)	CD	Min.400V, 4700pF, 125°C, type Y1	cURus
			JYH HSU (JEC) ELECTRONICS LTD (E356696)	JY	Min.300V, 4700pF, 125°C, type Y1	cURus
				JD	Min.400V, 4700pF, 125°C, type Y1	cURus
			SUCCESS ELECTRONICS CO LTD (E114280)	SE	Min.250V, 4700pF, 125°C, type Y1	cURus
		GUANGDONG SOUTH HONGMING ELECTRONIC SCIENCE & TECHNOLOGY CO LTD (E154899)	F	Min.250V, 4700pF, 125°C, type Y1	cURus	
19	20	Switching transformer	FOSHAN CITY SHUNDE DISTRICT QIAOJING ELECTRONIC CO LTD	EF20	1.5mH, Class F.	See 5.0
			SHENZHEN HENGSIDA INDUSTRY CO LTD	EF20	1.5mH, Class B.	See 5.0

4.0 Critical Components						
Photo #	Item no.1	Name	Manufacturer/ trademark ²	Type / model ²	Technical data and securement means	Mark(s) of conformity ³
12	21	PWB	HUNG HING ELECTRONICS CO LTD (E327405)	HH-05	V-0, 130°C, min. thk.: 1.5mm.	cURus
			GOFORTUNE TECHNOLOGIES INDUSTRIAL CO LTD (E246338)	GF-01	V-0, 130°C, min. thk.: 1.5mm.	cURus
			SHENZHEN FUXIANG TECHNOLOGY CO LTD TECHNOLOGY CORP (E302652)	FX-1	V-0, 130°C, min. thk.: 1.5mm.	cURus
			Jian Xintonglian Circuit Co Ltd (E339347)	TL-1	V-0, 130°C, min. thk.: 1.5mm.	cURus
			Various	Various	V-0, 130°C, min. thk.: 1.5mm.	cURus
13	22	Heat shrinkable sleeve	GUANGZHOU KAIHENG NEW MATERIAL CO LTD (E321827)	K-102	600V, 125°C, VW-1	cURus
			Various	Various	600V, 125°C, VW-1	cURus
24	23	Fan guard	CHI MEI CORPORATION (E56070)	PA-757(+)	ABS, HB, HWI 4, HAI 0, RTI 80, Min. thk.: 2.8mm.	cURus
				PA-765(+)	ABS, V-0, HWI 2, HAI 0, RTI 80, Min. thk.: 2.8mm.	cURus
				PW-957(+)(f1)	ASA, V-0, HWI 3, HAI 0, RTI 50, Min. thk.: 2.8mm.	cURus
			FORMOSA CHEMICALS & FIBRE CORP PLASTICS DIV (E162823)	AG15A1	ABS, HB, HWI 4, HAI 0, RTI 85, Min. thk.: 2.8mm.	cURus
				WF3301(f1)	ABS, HB, HWI 4, HAI 0, RTI 50, Min. thk.: 2.8mm.	cURus
			KINGFA SCI & TECH CO LTD (E171666)	PA66-RNG00(r4)(##)(f1)	PA66, V-0, HWI 4, HAI 0, RTI 110, Min. thk.: 2.8mm.	cURus
				PA66-RG(00)1	PA66, V-0, HWI 3, HAI 0, RTI 65, Min. thk.: 2.8mm.	cURus
SHENZHEN FUHENG NEW MATERIAL CO LTD(E234833)	HIPS-568	PS, HB, RTI 50, Min. thk.:2.8mm.	cURus			

4.0 Critical Components						
Photo #	Item no. ¹	Name	Manufacturer/ trademark ²	Type / model ²	Technical data and securement means	Mark(s) of conformity ³
26	24	Fan wheel	CHI MEI CORPORATION (E56070)	PA-757(+)	ABS, HB, HWI 4, HAI 0, RTI 80, Min. thk.: 2.8mm.	cURus
				PA-765(+)	ABS, V-0, HWI 2, HAI 0, RTI 80, Min. thk.: 2.8mm.	cURus
				PW-957(+)(f1)	ASA, V-0, HWI 3, HAI 0, RTI 50, Min. thk.: 2.8mm.	cURus
			FORMOSA CHEMICALS & FIBRE CORP PLASTICS DIV (E162823)	AG15A1	ABS, HB, HWI 4, HAI 0, RTI 85, Min. thk.: 2.8mm.	cURus
				WF3301(f1)	ABS, HB, HWI 4, HAI 0, RTI 50, Min. thk.: 2.8mm.	cURus
			KINGFA SCI & TECH CO LTD (E171666)	PA66-RNG00(r4)(##)(f1)	PA66, V-0, HWI 4, HAI 0, RTI 110, Min. thk.: 2.8mm.	cURus
				PA66-RG(00)1	PA66, V-0, HWI 3, HAI 0, RTI 65, Min. thk.: 2.8mm.	cURus
			SHENZHEN FUHENG NEW MATERIAL CO LTD(E234833)	HIPS-568	PS, HB, RTI 50, Min. thk.:2.8mm.	cURus
30	25	Fan motor	WOLONG ELECTRIC (JINAN) MOTOR CO LTD	WZD-A01060D-04B	DC155V, 0.56A, 60W, Z.P. Shown as Class B on label but tested as Class A. Fixed on frame by screws.	See 5.0
30	26	Marking (not shown)	Various	Various	Rated max.60-80°C, suitable for being affixed to ABS material	cURus

NOTES:

- 1) Not all item numbers are indicated (called out) in the photos, as their location is obvious.
- 2) "Various" means any type, from any manufacturer that complies with the "Technical data and securement means" and meets the "Mark(s) of conformity" can be used.
- 3) Indicates specific marks to be verified, which assures the agreed level of surveillance for the component. "NR" - indicates Unlisted and only visual examination is necessary. "See 5.0" indicates Unlisted components or assemblies to be evaluated periodically refer to section 5.0 for details.

5.0 Critical Unlisted CEC Components

INSULATED COIL				
Photo #	Item no.	Name	Manufacturer/Trademark	Type / model
19	20	Switching transformer	FOSHAN CITY SHUNDE DISTRICT QIAOJING ELECTRONIC CO LTD	EF20
Electrical Rating: 1.5mH			Insulation class	F
Component Standard used:		UL 1310:2018 Ed.7+R:16Aug2019 CSA C22.2#223:2015 Ed.3		

MATERIALS LIST			
Component	Manufacturer	Type/model	Dimensions/thickness/assembly information
Insulation system	FOSHAN CITY SHUNDE DISTRICT QIAOJING ELECTRONIC CO LTD	QJ-155	Class 155. E365880

WINDING(S) RESISTANCE						
Winding Designation	Wire Size (mm)	Wire Type	Turns	Volts	Amps	DC resistance (Ω) +/- 10%:
N1	Φ0.25	2UEW	126	/	/	1.24
N3	Φ0.35	TEX-E	11	/	/	0.36
N4	Φ0.40	TEX-E	9	/	/	0.30
N6	Φ0.16	2UEW	30	/	/	0.76
N7	Φ0.16	2UEW	26	/	/	0.58

VERIFICATION PROCESS			
Frequency:	Annual	Test Site: CEC	Number of samples to test: 1
Test Name	Test Parameters		
Winding resistance	See resistance per winding above.		
Dielectric Strength	Apply voltage Between	Test Voltage	Test Time
	Primary to core	1240V	60s
	Primary to secondary	1240V	60s
	Secondary to core	500V	60s

5.0 Critical Unlisted CEC Components

INSULATED COIL				
Photo #	Item no.	Name	Manufacturer/Trademark	Type / model
19	20	Switching transformer	SHENZHEN HENGSIDA INDUSTRY CO LTD	EF20
Electrical Rating: 1.5mH			Insulation class	B
Component Standard used:		UL 1310:2018 Ed.7+R:16Aug2019 CSA C22.2#223:2015 Ed.3		

MATERIALS LIST			
Component	Manufacturer	Type/model	Dimensions/thickness/assembly information
Insulation system	SHENZHEN HENGSIDA INDUSTRY CO LTD	P.D.George/Ripley B-19	Class 130. E240087

WINDING(S) RESISTANCE						
Winding Designation	Wire Size (mm)	Wire Type	Turns	Volts	Amps	DC resistance (Ω) +/- 10%:
N1	Φ0.25	2UEW	126	/	/	1.22
N2	Φ0.35	TEX-E	11	/	/	0.38
N3	Φ0.40	TEX-E	9	/	/	0.34
N4	Φ0.16	2UEW	30	/	/	0.80
N5	Φ0.16	2UEW	26	/	/	0.62

VERIFICATION PROCESS			
Frequency:	Annual	Test Site: CEC	Number of samples to test: 1
Test Name	Test Parameters		
Winding resistance	See resistance per winding above.		
Dielectric Strength	Apply voltage Between	Test Voltage	Test Time
	Primary to core	1240V	60s
	Primary to secondary	1240V	60s
	Secondary to core	500V	60s

5.0 Critical Unlisted CEC Components						
INSULATED COIL						
Photo #	Item no.	Name	Manufacturer/Trademark		Type / model	
30	25	Fan motor	WOLONG ELECTRIC (JINAN) MOTOR CO LTD		WZD-A01060D-04B	
Electrical Rating: DC155V, 0.56A, 60W, Z.P.					Insulation class A	
Component Standard used: UL 1004-1:2012 Ed.2+R:05Nov2020; UL 1004-2:2014 Ed.2+R:28Feb2020 CSA C22.2#77:2014 Ed.8+E1; CSA C22.2#100:2014 Ed.7+U1						
MATERIALS LIST						
Component	Manufacturer	Type/model	Dimensions/thickness/assembly information			
Stator	WOLONG ELECTRIC (JINAN) MOTOR CO LTD	ZY860	Outer dimension: 92mm. Min. thickness: 53mm.			
Rotor	WOLONG ELECTRIC (JINAN) MOTOR CO LTD	Y30H-2	Outer dimension: 50mm. Min. thickness: 21.0mm.			
Enclosure	JIANGYIN LONGSHAN SYNTHETIC MATERIAL CO LTD	PBT 5303 G10	PBT, V-0, HAI 4, HWI 0, RTI 120, min. thk.: 0.6mm. E186809			
Winding	ZHEJIANG GRANDWALL ELECTRIC SCIENCE & TECHNOLOG CO LTD	QA-x/155	Class155. E206121			
Slot liner	JIANGYIN LONGSHAN SYNTHETIC MATERIAL CO LTD	PBT 5202 G(XX)	PBT, HB, RTI 75, min. thk.: 0.8-0.9mm. E186809			
Lead	GUANGZHOU KAIHENG ENTERPRISE GROUP	1430	300V, 22AWG, 105°C, VW-1. E248582			
	Various	1430	300V, 22AWG, 105°C, VW-1.			
WINDING(S) RESISTANCE						
Winding Designation	Wire Size (mm)	Wire Type	Turns	Volts	Amps	DC resistance (Ω) +/- 10%:
Any two terminals between U, V or W	0.41	QA-x/155	400	/	/	21.6
VERIFICATION PROCESS						
Frequency:	Annual	Test Site:	CEC		Number of samples to test: 1	
Test Name	Test Parameters					
Winding resistance	See resistance per winding above.					
Dielectric Strength	Apply voltage Between			Test Voltage		Test Time
	Winding to core			1000V		60s

6.0 Critical Features

Recognized Component - A component part, which has been previously evaluated by an accredited certification body with restrictions and must be evaluated as part of the basic product considering the restrictions as specified by the Conditions of Acceptability.

Listed Component - A component part, which has been previously Listed or Certified by an accredited Certification Organization with no restrictions and is used in the intended application within its ratings.

Unlisted Component - A part that has not been previously evaluated to the appropriate designated component standard. It may also be a Listed or Recognized component that is being used outside of its evaluated Listing or component recognition.

Critical Features/Components - An essential part, material, subassembly, system, software, or accessory of a product that has a direct bearing on the product's conformance to applicable requirements of the product standard.

Construction Details - For specific construction details, reference should be made to the photographs and descriptions. All dimensions are approximate unless specified as exact or within a tolerance. In addition to the specific construction details described in this Report, the following general requirements also apply.

1. Spacing - In primary circuits, 2.4 mm minimum spacing are maintained through air and over surfaces of insulating material between current-carrying parts of opposite polarity and 2.4 mm minimum between such current-carrying parts and dead-metal parts or low voltage isolated circuits.
2. Mechanical Assembly - Components such as switches, fuseholders, connectors, wiring terminals and display lamps are mounted and prevented from shifting or rotating by the use of lockwashers, starwashers, or other mounting format that prevents turning of the component.
3. Corrosion Protection - All ferrous metal parts are protected against corrosion by painting, plating or the equivalent.
4. Accessibility of Live Parts - All uninsulated live parts in primary circuitry are housed within a non-metallic enclosure constructed with no openings other than those specifically described in Sections 4 and 5.
5. Grounding - All exposed dead-metal parts and all dead-metal parts within the enclosure that are exposed are connected to the grounding lead of the power supply cord.
6. Polarized Connection - This product is provided with a polarized power supply connection. All single pole switches and fuses are connected only to the ungrounded supply circuit conductor.
7. Internal Wiring - Internal wiring is routed away from sharp or moving parts. Internal wiring leads terminating in soldered connections are made mechanically secure prior to soldering. Recognized Component separable (quick disconnect) connectors of the positive detent type, closed loop connectors, or other types specifically described in the text of this report are also acceptable as internal wiring terminals. At points where internal wiring passes through metal walls or partitions, the wiring insulation is protected against abrasion or damage by plastic bushings or grommets. All wiring is minimum 22AWG, with a minimum rating of 300V, 105°C.
8. Schematics - N/A
9. Markings - The product is marked on a labeling system as described in item No. 26 of Section 4.0 as follows:
brand name, model number, date of manufacturer, electrical ratings.
10. Cautionary Markings - N/A
11. Installation, Operating and Safety Instructions - Instructions for installation and use of this product are provided by the manufacturer. Refer to Illustration No. 1-1c for details. Only representative pages are pasted.

7.0 Illustrations

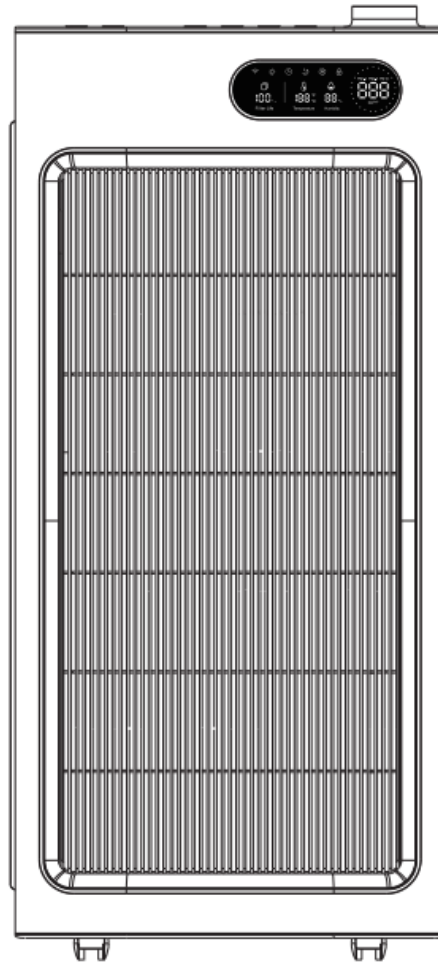
Illustration 1 - Manual

JAFÄNDÄ

JF1500 Air Purifier User Manual

Please read the manual carefully and keep it for future reference.
Thank you for choosing us!

READ AND SAVE THESE INSTRUCTIONS



7.0 Illustrations

Illustration 1a - Manual

TABLE OF CONTENTS

Packing Contents	1
Specifications	1
Safety Instructions	2
Know Your Air Purifier	3
Control Panel	4
Product Features	5
Using Your Air Purifier	6-7
Operating Instructions	8
PM Sensor Replacement	9
Cleaning and Maintenance	10
Filter Replacement	11
Troubleshoot Guide	12
Warranty & Support	12
Returns & Refunds	12

7.0 Illustrations

Illustration 1b - Manual

To ensure safe use of the machine, please read the following safety instructions carefully before use.

1. Please insert the power cord of the machine into the proper power socket.
2. For best results, please place the air purifier 50 centimeters (20 inches) from the nearest vertical surface, such as a wall or cabinet. In general, the more centered the air purifier, the better.
3. Place the air purifier close to the power outlet, and make sure the power cord does not create a barrier that can cause tripping.
4. Do not use this machine in places with inflammable and explosive articles.
5. Do not use outdoors or on wet ground.
6. Please place the machine on a smooth ground or table. Do not put it on the edge of the table or on a tilted place to avoid accidental collision and damage to the machine.
7. If the power cord is damaged and needs to be replaced, please contact our professional staff for replacement.
8. Do not block the air outlet when using, so as to avoid damage caused by overheating of the machine. Do not use near soft objects, such as curtains.
9. Do not put your fingers or other objects into the air outlet of the machine to avoid damaging the machine or causing personal injury.
10. Do not use in the vicinity of explosive materials, flammable liquids or gases, and do not use in the vicinity of heating or high temperature materials, which may become the cause of fire risk or fire hazard..
11. Keep your hands dry when removing the power and moving the purifier.
12. When the product is not in use, please store it in a safe, cool and dry place and avoid direct sunlight.
13. Do not use gasoline, chemical agents and other flammable cleaners for cleaning, so as to avoid damage to the machine.
14. Remove the power plug before cleaning the machine, replacing or cleaning the filter.
15. Remove the plug from the socket for safety if it is not in use for a long time.
16. Do not modify, disassemble or repair the machine without authorization. In case the machine breaks down and needs to be repaired, please contact our after-sales service center in time.
17. This appliance is not intended for use by persons(including children) with reduced physical, sensory or mental capabilities, or lack of experience and knowledge, unless they have been given supervision or instruction concerning use of the appliance by a person responsible for their safety. Children should be supervised to ensure that they do not play with the appliance




Before using the machine, please remove the packaging of the machine and all the filter, and ensure that the filter of the machine is installed correctly according to the requirements of the operating manual.




7.0 Illustrations

Illustration 1c - Manual

Safety Instruction

The following safety precautions and instructions must be read carefully and observed when the product is used!

 Prohibitory sign	The behaviors with this sign must be prohibited, otherwise it may cause product damage or endanger the user's personal safety.
 Warning sign	The behaviors with this sign must be operated in strict accordance with the requirements, otherwise it may cause product damage or endanger the user's personal safety.
 Attention sign	The behaviors with this sign must be paid attention to, otherwise it may cause product damage or other losses due to improper operation.

	Please do not touch the power plug with wet hands.		Please regularly clean the machine and power plug.
	Please do not block the air inlet/outlet.		Only the 120V power sockets are 120V power sockets.
	Please do not use the machine in any place with much oil fume or high humidity.		Please do not put it close to or on any heat source (such as a fireplace, stove or a place with flammable gases).
	Please do not rinse the high-efficiency composite filter with water.		Please be careful when cleaning the air purifier, as corrosive detergents may damage the surface.
	This machine shall not be used by people with disabilities, perceptual disturbance or dysgnosia or children alone, unless they use it under the supervision and guidance of safety director on the site.		Please do not unplug the power cord from the power socket when cleaning the air purifier or leaving it unused. Otherwise, it may cause electric shock due to poor insulation or fire due to short circuit.
	Contains FCC ID: 2ANDL-WBR3 This device complies with part 15 of the FCC Rules. Operation is subject to the following two conditions: (1) This device may not cause harmful interference, (2) this device must accept any interference received, including interference that may cause undesired operation.		
	This air purifier is suitable for floor standing. With caster wheels, it's easy to move in-house. Do not place the air purifier closer than 10cm/4" to wall or another object..		

8.0 Test Summary					
Evaluation Period	2023-07-17 to 2023-08-05		Project No.	230800161SHA	
Sample Rec. Date	17-Jul-2023	Condition	Prototype	Sample ID.	0230717-010
Test Location	Building No. 86, 1198 Qinzhou Road (North), Shanghai 200233, P. R. China				
Test Procedure	Testing Lab				
Determination of the result includes consideration of measurement uncertainty from the test equipment and methods. The product was tested as indicated below with results in conformance to the relevant test criteria.					
The following tests were performed:					
Test Description	UL 507:2017 Ed.10+R:22Jun2022 Clause		CSA C22.2#113:2018 Ed.11 Clause		
Leakage Current Test	41		6.8		
Continuity of Grounding Circuit Test	42		/		
Input Test	45		6.3		
Temperature Test	46		6.4		
Dielectric Voltage Withstand Test	47		6.5		
Locked Rotor Test	50		/		
Humidity Conditioning Test	53		6.26		
Impact Test on Guards	61		6.22		
Static Force Test on Guards	62		6.23		
Impeller Test for Portable Fans	63		6.26		
Impeller Ignition Test	64		/		
Component Breakdown Test	65		6.12		
Stability Test	72		6.14		
Abnormal temperature	/		6.11		
Impact test (enclosures)	/		6.25		
Test Description	UL 1310:2018 Ed.7+R:16Aug2019/ Clause		CSA C22.2#223:2015 Ed.3/ Clause		
Maximum Output Voltage Test	28		6.3.1		
Maximum Input Test	29		6.3.2		
Output Current and Power Test	30		6.3.4		
Full-Load Ourput Current Test	32		6.3.3		
Dielectric Voltage-Withstand Test	34		6.5		
Abnormal Test	39		6.8		
Mandated reviewer Kent Zhang					
Test Description	UL 1004-1:2012 Ed.2+R:05Nov2020 UL 1004-2:2014 Ed.2+R:28Feb2020 Clause		CSA C22.2#100:2014 Ed.7+U1; CSA C22.2#77:2014 Ed.8+E1 Clause		
Locked Rotor Temperature Test	3		6.4.5		
Locked Rotor Endurance Test	4		6.6.4		
Dielectric Voltage-Withstand Test	37		6.5		
8.1 Signatures					
A representative sample of the product covered by this report has been evaluated and found to comply with the applicable requirements of the standards indicated in Section 1.0.					
Completed by:	Kevin Zhang	Reviewed by:	Frederic Yang		
Title:	Certification Engineer	Title:	Technical Supervisor		
Signature:	<i>Kevin Zhang</i>	Signature:			

9.0 Correlation Page For Multiple Listings

The following products, which are identical to those identified in this report except for model number and Listee name, are authorized to bear the ETL label under provisions of the Intertek Multiple Listing Program.

BASIC LISTEE	Dongguan PureMate Technology Co., Ltd.
Address	Building No.4, Haiyong Technology Park, Xiawei Shenwo Industrial Zone, Zhutang Village, Fenggang Town, Dongguan City, Guangdong Province
Country	China
Product	Air Purifier

MULTIPLE LISTEE 1	Jafanda LLC
Address	1309 Coffeen Avenue STE 4304 Sheridan, Wyoming 82801
Country	USA
Brand Name	Jafanda

ASSOCIATED MANUFACTURER	Dongguan PureMate Technology Co., Ltd.
Address	Building No.4, Haiyong Technology Park, Xiawei Shenwo Industrial Zone, Zhutang Village, Fenggang Town, Dongguan City, Guangdong Province
Country	China

MULTIPLE LISTEE 1 MODELS	BASIC LISTEE MODELS
JF1500	PM1928B

MULTIPLE LISTEE 2	None
Address	
Country	
Brand Name	

ASSOCIATED MANUFACTURER	
Address	
Country	

MULTIPLE LISTEE 2 MODELS	BASIC LISTEE MODELS

MULTIPLE LISTEE 3	None
Address	
Country	
Brand Name	

ASSOCIATED MANUFACTURER	
Address	
Country	

MULTIPLE LISTEE 3 MODELS	BASIC LISTEE MODELS

10.0 General Information

The Applicant and Manufacturer have agreed to produce, test and label ETL Listed products in accordance with the requirements of this Report. The Manufacturer has also agreed to notify Intertek and to request authorization prior to using alternate parts, components or materials.

COMPONENTS

Components used shall be those itemized in this Intertek report covering the product, including any amendments

LISTING MARK

The ETL Listing mark applied to the products shall either be separable in form, such as labels purchased from Intertek, or on a product nameplate or other media only as specifically authorized by Intertek. Use of the mark is subject to the control of Intertek.

The mark must include the following four items:

- 1) applicable country identifiers "US" and/or "C" or "US", "C" and "EU"
- 2) the word "Listed" or "Classified" or "Recognized Component" (whichever is appropriate)
- 3) a control number issued by Intertek
- 4) a product descriptor that identifies the standards used for certification. Example:

For US standards, the words, "Conforms to" shall appear with the standard number along with the word, "Standard" or "Std." Example: "Conforms to ANSI/UL Std. XX."

For Canadian standards, the words "Certified to CAN/CSA Standard CXX No. XX." shall be used, or abbreviated, "Cert. to CAN/CSA Std. CXX No. XX."

Can be used together when both standards are used.

If all standards on the ATM have the same standard title, the shared title or its abbreviation may be used in place of the examples above. Example: "Medical Electrical Equipment" or "MEE"; "Information Technology Equipment" or "ITE"; "Audio/Video Information And Communication Technology Equipment" or "A/V ICTE".

Note: A facsimile must be submitted to Intertek, Attn: Follow-up Services for approval prior to use.

The facsimile need not have a control number. A control number will be issued **after signed Certification Agreements** have been received by the Follow-up Services office, approval of the facsimile of your proposed Listing Mark, satisfactory completion of the Listing Report, and scheduling of a factory assessment in your facility.

MANUFACTURING AND PRODUCTION TESTS

Manufacturing and Production Tests shall be performed as required in this Report.

FOLLOW-UP SERVICE

Periodic unannounced audits of the manufacturing facility (and any locations authorized to apply the mark) shall be scheduled by Intertek. An audit report shall be issued after each visit. Special attention will be given to the following:

1. Conformance of the manufactured product to the descriptions in this Report.
2. Conformance of the use of the ETL mark with the requirements of this Report and the Certification Agreement.
3. Manufacturing changes.
4. Performance of specified Manufacturing and Production Tests.

In the event that the Intertek representative identifies non-conformance(s) to any provision of this Report, the Applicant shall take one or more of the following actions:

1. Correct the non-conformance.
2. Remove the ETL Mark from non-conforming product.
3. Contact the issuing product safety evaluation center for instructions.

10.1 Evaluation of Unlisted Components

Because Unlisted Components are uncontrolled, and they do not fall under a third party follow up program, Intertek may require these components to be tested and/or evaluated at least once annually, more often for certain components, as part of the independent certification process. The Unlisted Components in Section 5.0 require testing and/or evaluation as indicated.

The Applicant will be notified, in writing, via the applicable contact methods, as defined in Section 1.0, when these components must be selected and sent to Component Evaluation Center (CEC) for re-evaluation.

Due to particular testing requirements, some components may be requested to be shipped to specific labs. Thus, specific shipment destination(s) for each sample will be provided in the written notification.

Managing CEC Location:
Intertek Testing Services Shanghai Limited
ETL Component Evaluation Center
Building No. 86, 1198 Qinzhou Road (North)
Shanghai 200233, China
Attn: Ms. Emiliana Zhou

Sample Disposition: Due to the destructive nature of the testing, all samples will be discarded at the conclusion of testing unless, the manufacturer specifically requests the return of the samples. The request for return must accompany the initial component shipment.

11.0 Manufacturing and Production Tests

The manufacturer agrees to conduct the following Manufacturing and Production Tests as specified:

Required Tests

- Dielectric Voltage Withstand Test
- Grounding Continuity Test

11.1 Dielectric Voltage Withstand Test

Method

One hundred percent of production of the products covered by this Report shall be subjected to a routine production line dielectric withstand test.

The test shall be conducted on products, which are fully assembled. Prior to applying the test potential, all switches, contactors, relays, etc., should be closed so that all primary circuits are energized by the test potential. If all primary circuits cannot be tested at one time, then separate applications of the test potential shall be made.

The test voltage specified below shall be applied between primary circuits and accessible dead-metal parts. The test voltage may be gradually increased to the specified value but must be maintained at the specified value for one second or one minute as required.

Test Equipment

The test equipment shall incorporate a transformer with an essentially sinusoidal output, a means to indicate the applied test potential, and an audible and/or visual indicator of dielectric breakdown.

The test equipment shall incorporate a voltmeter in the output circuit to indicate directly the applied test potential if the rated output of the test equipment is less than 500VA.

If the rated output of the test equipment is 500VA or more, the applied test potential may be indicated by either:

- 1 - a voltmeter in the primary circuit;
- 2 - a selector switch marked to indicate the test potential; or
- 3 - a marking in a readily visible location to indicate the test potential for test equipment having a single test potential output.

In cases 2 and 3, the test equipment shall include a lamp or other visual means to indicate that the test potential is present at the test equipment output. All test equipment shall be maintained in current calibration.

Products Requiring Dielectric Voltage Withstand Test:

<u>Product</u>	<u>Test Voltage</u>	<u>Test Time</u>
All products covered by this Report.	1000V	60 s
	or	
	1200V	1 s

11.2 Grounding Continuity Test

Method

Each product listed below shall be subjected to a test to determine that there is continuity between accessible dead-metal parts of the product and the grounding pin or blade of the attachment plug.

If all accessible dead metal is connected, only a single test need be performed. A visual or audible device (ohmmeter, buzzer, etc.) may be used to indicate grounding continuity.

Products Requiring Grounding Continuity Test:

All products covered by this Report.

