

Lifting Products & Services

PRODUCTS & SERVICES

Cranes	3
Hoists	8
Spreader/Lifting Beams	11
Lifting Magnets	13
Plate Clamps	15
Vacuum Lifts	17
Lift/Tilt Tables	18
Conveyor Systems	20
Slings	24
Hoist/Winch Cables	37
Cable Assemblies	38
Hooks	40
Hardware	41

See back inside cover for full list of product offerings.

WISCOLIFT

Working Safe is Working Smart.

800-242-3477 · WiscoLift.com



Hoist and Crane Installation, Inspection and Maintenance

- Installation of Overhead Bridge, Gantry, Monorails, Jib and Workstation Cranes.
- Customization of engineered crane systems.
- Receive comprehensive inspections with printed reports.
- Past inspections available for printing.
- Quality repairs on all brands of hoists and cranes.
- Complete preventive maintenance carried out for each hoist or crane.
- 24/7 service call dispatch.

Sling and Rigging Product Inspections

- Receive comprehensive inspections with printed reports.
- Past inspections available for printing.

Lock Out/Tag Out (LOTO) Program

- Tag each piece of equipment that includes photo of LOTO device on equipment and start up/shut down procedures.
- Documentation outlining OSHA's operator requirements for LOTO procedures and training.



Industrial and Manufacturing Equipment Service Maintenance

- Troubleshoot/service all types of industrial and manufacturing equipment.
- Monthly service program to ensure that all equipment is running at all times.

Non-Destructive Testing

- WiscoLift performs both dye-penetrant testing and magnetic particle testing on all hooks and fabricated lifting devices and documents for item tested.

Load Testing

Equipment:

- 200,000# horizontal test bed.
- 30,000# vertical test bed.
- Ten ton static/dynamic vertical hoist test stand.
- Portable test stand for manual hoists, plate clamps and lever operated permanent lifting magnets.
- All equipment is calibrated annually and is ASTM-4 compliant.



Training Classes for Riggers and Overhead Crane Operators

- Classroom Training Programs for Safe Lifting Practices, Crane and Hoist Inspection, and Overhead Crane Operator.
- Classes held at your facility and customizable to your rigging equipment.
- Focuses on safe rigging and lifting practices.
- Includes OSHA/ASME requirements for equipment inspections.
- Discusses strategies for lifting at angles and calculating center of gravity.

WiscoLift offers structural runway systems for top running and underrunning bridge cranes in multiple configurations, completely freestanding, braced back and ceiling mounted. All of our runways are fabricated by AWS D1.1 and D14.1 using certified welders. Our team of crane specialists will also work with your building supplier or engineer to provide crane loading information where building mounted runways are called for.

Top Running Bridge Cranes

Top running bridge cranes are ideal for facilities with low headroom. The system moves above the runway on a fixed rail or track systems, allowing the end trucks to carry the bridge and hoist along the top of the runway systems. This allows more space between the hook and the ground.

Underrunning Bridge Cranes

Underhung bridge cranes allow for more versatility. Underhung bridge cranes are typically used for lighter applications and are commonly mounted from the ceiling. Interlocks and switches can also be used with a monorail. They can be set-up to transfer a load to an adjacent crane.



For more information on Custom Cranes, call 800-242-3477.

As an innovator and leader in the enclosed track workstation crane industry, Gorbel® has over 30 years experience providing overhead handling solutions from 50 lbs. to 40 tons to customers in a wide range of industries. Gorbel® has a comprehensive line of crane technology products, including workstation bridge cranes, patented track cranes, I-beam jib cranes, gantries, and workstation jib cranes. They also have an exciting line of Ergonomic Lifting products, featuring the G-Force® Intelligent Lifting Device, and Easy Arm® Intelligent Lifting Arm. Their newest line, Tether Track™ Fall Arrest Safety Systems, provides a turnkey fall protection solution that exceeds OSHA standards.

**Top-Tier
GORBEL®
DISTRIBUTOR
Nationally
Recognized**

Workstation Bridge Cranes

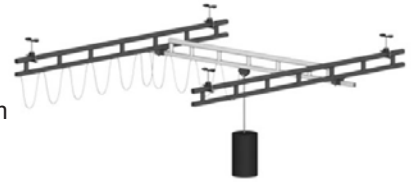
Free Standing Bridge Crane

- Capacities 250# - 4000#
- Rectangular coverage with up to 34' bridge and 124' runway standard
- Standard support distances of 20', 25', and 30'
- Easy to move and position loads
- Modular design for greater flexibility
- Doesn't require existing support structure



Ceiling Mounted Bridge Crane

- Capacities 250# - 4000#
- Rectangular coverage with up to 34' bridge and 124' runway standard
- Plain Steel Track maximum support distance of 6'
- Trussed Steel Track maximum support distances of 20', 25' and 30'
- Easy to move and position loads
- Modular design for greater flexibility



Enclosed Track Jib Cranes

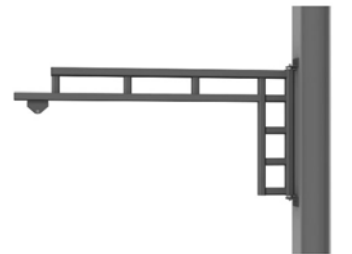
Free Standing Workstation Jib Crane

- Capacity up to 1000#
- Coverage: circular, standard spans to 16'
- 360° rotation
- Designed to support tool balancers, air balancers, vacuum lifters and hoists
- Foundationless designs available



Wall Mounted Workstation Jib Crane

- Capacity up to 1000#
- Coverage: circular, standard spans to 20'
- 200° rotation
- Can be mounted to a wall or column



Aluminum Tie Rod Jib Crane

- Capacity up to 2000#
- Coverage: circular, standard spans to 20'
- 200° rotation
- Made of light weight aluminum enclosed track
- Tie rod minimizes deflection for more precise positioning



WISCOLIFT

Working Safe is Working Smart.
W6396 Specialty Drive
Greenville, WI 54942
WiscoLift.com

**CUSTOM
DESIGNS
AVAILABLE!**

Call: 800.242.3477
Greenville: 920.757.8832
Milwaukee: 262.253.2288
Fax: 920.757.8858
E-mail: CSR@WiscoLift.com

Jib and Gantry Cranes

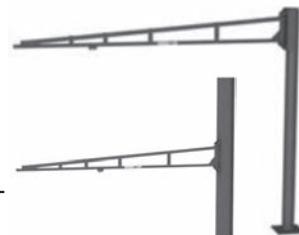
50 Lb Capacity Tool Solution Jib

- Free standing & wall mounted
- Coverage: circular, standard spans from 4' - 10'
- Standard heights from 8' - 10'
- 180° rotation
- Designed to be smaller, lighter and more cost effective for applications with suspended tools



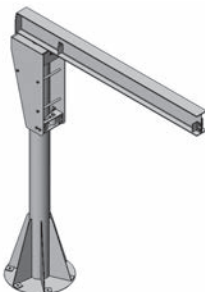
150 Lb Capacity Tool Solution Jib

- Free standing & wall mounted
- Coverage: circular, standard spans from 4' - 12'
- Standard heights from 8' - 10'
- 200° rotation
- Designed to be smaller, lighter and more cost effective for applications with suspended tools



Free Standing Jib Crane

- Capacity up to 10,000#
- Spans up to 20' with 360° rotation
- Motorized units available
- Tapered roller bearing at top
- Jib includes mast, head and boom
- Base plate is welded to mast
- No stress on building wall or columns
- Allows for maximum hook lift



Tie Rod Jib Crane

- Capacity up to 2000#
- Spans up to 20'
- 200° rotation
- High-strength extruded aluminum track
- Double tie rod construction
- Longer spans available



Foundationless Jib Crane

- Capacity up to 1/2 ton
- 360° rotation
- Spans up to 20', and height up to 20' under boom
- Jib includes mast, head and boom
- Base plate is welded to mast
- No stress on building wall or columns
- Allows for maximum hook lift
- Requires 6" reinforced concrete



Portable Gantry

- Capacities 1 ton - 5 ton
- Spans up to 30' and height up to 20'
- Supplied with four roller-bearing steel wheels for easy maneuverability
- Ideal for use in aircraft, automotive, and marine repair shops



Articulating Jib Cranes

Free Standing Articulating Jib Crane

- Capacity up to 2000#
- Coverage: circular, standard spans to 16'
- 360° rotation at each pivot point
- Can be used with hook mounted lifting devices (electric, air, or vacuum)
- Foundationless designs available



Wall Mounted Articulating Jib Crane

- Capacity up to 2000#
- Wall or column mounted
- Coverage: circular, standard spans to 16'
- 200° rotation on the primary boom



WISCOLIFT

Working Safe is Working Smart.
W6396 Specialty Drive
Greenville, WI 54942
Wiscolift.com

Call: 800.242.3477
Greenville: 920.757.8832
Milwaukee: 262.253.2288
Fax: 920.757.8858
E-mail: CSR@Wiscolift.com

Articulating Jib Cranes (Cont'd)

Free Standing & Wall Mounted PIVOT PRO™

- Capacity up to 150# and spans to 12'
- Free standing capable of 360° rotation on primary boom and 300° on secondary arm
- Wall mounted capable of 200° rotation on the primary arm and 300° rotation with the secondary arm
- Designed to work with all brands of vacuum lifting equipment



Ceiling Mounted Articulating Jib Crane

- Capacity up to 2000#
- Coverage: circular, standard spans to 16'
- 360° rotation at each pivot point
- Can be used with hook mounted lifting devices (electric, air, or vacuum)
- Can be mounted to a platform supported from a bridge crane to swing outside the normal coverage of a bridge crane
- Contact WiscoLift; limited to certain capacities and spans



Ergonomic Lifting Products

G-Force Intelligent Lifting Device, Model Q2 and iQ2

- Capacities 165# - 1320#
- Configurable inputs and outputs on the handle
- Speeds up to 200' per minute
- Rapid return on investment through increased productivity and reduced product damage
- Decreases risk of operator injury creating a safer work environment
- Higher environmental ratings (more tolerant to dust and liquid)
- Enhances job performance



Under Hung Easy Arm™

- Capacity 165#
- Spans to 10'
- Speeds up to 150' per minute
- Mount to a ceiling or manipulator platform
- Adequate overhead structure required to resist the forces imposed by the system
- Cost effective turnkey solution



Free Standing Easy Arm™

- Capacity 165#, 330# and 660#
- Spans from 6' - 14'
- Speeds up to 180' per minute
- Height under hook of 6' - 11'
- Cost effective turnkey solution



Gorbel® Tether Track™ Rigid Rail Fall Arrest Systems

- Designed by qualified engineers, Tether Track™ meets OSHA 1926 Subpart M Construction standard and ANSI Z359 Fall Protection Code.
- Features an enclosed track, exclusively designed for easy movement and provide the highest degree of mobility and safety for single or multiple workers.
- Unlike wire rope systems, multiple workers are not impacted by each other's movements.



Monorail



Swing Arm



Freestanding Monorail



Single Pole

WISCOLIFT

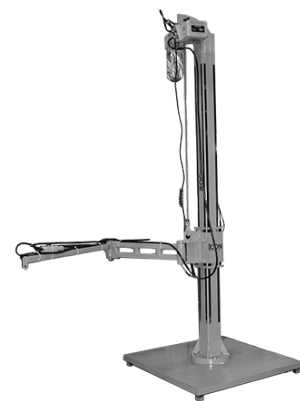
Working Safe is Working Smart.
W6396 Specialty Drive
Greenville, WI 54942
WiscoLift.com

Call: 800.242.3477
Greenville: 920.757.8832
Milwaukee: 262.253.2288
Fax: 920.757.8858
E-mail: CSR@WiscoLift.com

iCON Articulating Lifting System

- Units available with capacities of 150# and 500#
- Ideally suited for picking/placing in hard to reach locations
- Each unit includes a high quality Harrington variable speed electric chain hoist
- Almost unlimited applications
- Excellent for lifting with hooks, magnets or vacuum lifts
- Available mounting plates adapt to custom lifting and manipulating devices
- Portable bases available

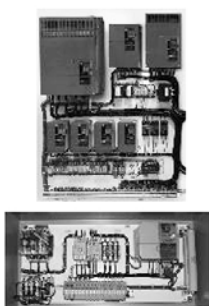
CUSTOM
DESIGNS
AVAILABLE!



Crane Accessories

Crane Controls

- Pre-engineered and custom engineered control panels
- Single or multiple motion controls
- Standard features:
 - Thru-door disconnect
 - Motor thermal overload protection
 - Brake contactor
 - Branch fusing
 - NEMA4/12 enclosures



FLEX EX2 Radio Remote Controls

- I-CHIP design allows for universal spare transmitter
- Advanced frequency management
- More than 200 programmable functions
- Variety of available accessories
- Specialty models:
 - A/B Selector
 - Tandem operation
 - Receiver select



SBN Pendant Pushbutton Stations

- Ergonomic design for greater comfort and less fatigue
- Single and two-speed button pairs have mechanical interlocks for greater safety
- Switches are rated for 3 Amps, 250 Volts AC
- Factory pre-wired pendants ship with minimal lead time



Collision Avoidance Systems

- Infrared and laser technology
- Multiple programmable control zones and emergency signals
- Programmable sensing ranges
- May be retrofitted to all types of motorized cranes or installed as new equipment



Magnetek Impulse® Sway Control System

Magnetek's IMPULSE® Sway Control System (SCS) Series 2 custom software can be added to any brand of existing bridge or trolley variable speed drive. This external retrofit system provides the benefit of sway control on an existing crane installation.

- Improves productivity by allowing the crane operator to move loads at full speed and come to a stop without needing to wait for load sway to dampen
- Improves the accuracy of load placement
- Enhances operational safety by reducing the potential for personnel injuries and damaged equipment caused by accidental contact with swinging loads



WISCOLIFT

Working Safe is Working Smart.
W6396 Specialty Drive
Greenville, WI 54942
WiscoLift.com

Call: 800.242.3477
Greenville: 920.757.8832
Milwaukee: 262.253.2288
Fax: 920.757.8858
E-mail: CSR@WiscoLift.com

Electric Chain Hoists

Raise productivity on the shop floor, production line, warehouse, shipping department or any material handling job with Harrington's wide variety of top quality electric chain hoists. Harrington's line of electric chain hoists includes single phase and three phase options in a wide variety of capacities and speeds for every application.

We are a
**HARRINGTON
HOIST®**
Repair Center

Three Phase

ER/NER

- Capacities 1/8 Ton - 20 Ton
- Count hour meter records and displays number of lowering starts
- Available in single and dual speed
- Dual speed VFD
- Smart limit option
- Smart brake technology



NER-FG Food Grade Hoist

- Capacities 1/4 Ton - 2 Ton
- Food grade oil and grease
- White epoxy paint for hoists, trolleys, hooks and suspenders
- Nickel-plated load chain
- Lubricants comply with FDA standards
- Many stainless steel options available



(N)ERCC Cylinder Control Hoist

- Capacities 1/8 Ton and 1/4 Ton
- In-line grip for one-handed operation and user comfort
- Operators free hand easily positions the load
- Adjustable dual speed via under-the-cover variable frequency drive



EQ / SEQ Dual Speed

- Capacities 1/8 Ton - 1 Ton
- 3-Phase (EQ) or Single Phase (SEQ)
- Dual speed adjustable (6:1)
- IP55 rated enclosure; IP65 pendant
- Heavy-duty fan cooled motor
- Includes a plastic chain container
- No load high speed function automatically increases hoist speed when load is less than 30% of WLL

Single Phase

ED Dual Adjustable Model

- Capacities 125# - 525#
- Unique cylinder control for user comfort
- High / low speed selection with variety of high speeds support fast production needs
- Easily installed, transported and stored



ED Single, Dual Speed & Infinity Model

- Capacities 125# - 1050#
- Lightweight and compact die cast aluminum body
- Variety of high speeds support fast production needs
- Easily installed, transported and stored



SNER

- Capacities 1/4 Ton - 3 Ton
- 60 minute, H4 rated, fan cooled motor for the most demanding applications
- Pull-rotor electric brake is self-adjusting and virtually maintenance-free
- Ability to accommodate very long lifts
- Compact, low headroom design
- Completely sealed body suitable for harsh indoor or outdoor environments - IP55 rated



WISCOLIFT

Working Safe is Working Smart.
W6396 Specialty Drive
Greenville, WI 54942
WiscoLift.com

Call: 800.242.3477
Greenville: 920.757.8832
Milwaukee: 262.253.2288
Fax: 920.757.8858
E-mail: CSR@WiscoLift.com

Air Hoists

TCR

- Capacities 1/4 Ton - 2 Ton
- Very fine feathering control for variable speed and precise load positioning
- Pendant & pull cord controls available
- Spring-loaded vane motor and pilot air control provide extremely fine feathering ability
- Unlimited duty cycle for severe applications
- Adjustable load limiter stops lift when load is over rated capacity
- Enclosed heavy-duty disc brake provides reliable braking action



TCS - "Cheetah"

- Capacities 1/4 Ton - 1 Ton
- Exceptional high speed lifting performance
- Very fine feathering control allows precise load positioning
- Pendant & pull cord controls available
- Spring loaded vane motor and pilot air control allow extremely fine feathering ability
- Unlimited duty cycle for severe applications
- Adjustable lifting and lowering speeds increase production capabilities
- Enclosed heavy-duty disc brake provides reliable braking action



AH - "Mini-Cat"

- Capacities 250# and 500#
- Very fine feathering ability for complete load control
- Pendant, pull cord & manipulator handle controls available
- Unlimited duty cycle to handle every production need
- High speed lifting increases production capabilities
- Low noise levels for operator comfort



JDN Mini

- Capacity of 1 Ton
- Insensitive to dust, humidity and temperature
- Suitable for horizontal pulling
- Rotation free suspension hook
- Lifting heights up to 26 feet



Wire Rope Hoists

RY Wire Rope Trolley Hoist

- Capacities 3, 5, 7-1/2 and 10 metric ton
- Base Mounted, Monorail or Top Running
- Can be built to accommodate a variety of gauge sizes
- Premium fatigue & wear resistant wire rope
- Electronic overload limiter and count hour meter
- Trolley features ASTM A572/A992 structural steel beam frame
- No load high speed



WiscoLift, Inc. also sells Wire Rope Hoists from the following manufacturers:

Ace World Companies
Columbus McKinnon
Demag
EMH

R&M
Street Crane
Yale

WISCOLIFT

Working Safe is Working Smart.
W6396 Specialty Drive
Greenville, WI 54942
WiscoLift.com

Call: 800.242.3477
Greenville: 920.757.8832
Milwaukee: 262.253.2288
Fax: 920.757.8858
E-mail: CSR@WiscoLift.com

Lever and Chain Hoists

Lever Hoists

- Capacities 550# - 19800#
- Load tested to 150% of rated capacity
- High quality alloy chain meets all international safety standards
- Single-hand control of free-chain function with load brake
- Weston-type load brake

- 5', 10', 15' and 20' standard lifts
- Meets ASME/ANSI standards

Options

- Overload protection
- Shipyard hooks

Model	LH025	LH075	LH100	LH150	LH300	LH600	LH750	LH900
Capacity (Lbs)	550	1650	2200	3300	6600	13200	16500	19800
Net Weight (Lbs)	5.2	17.6	17.6	24.3	37.5	57.3	92	106
Number of Falls	1	1	1	1	1	2	3	3
Min. Distance Between Hooks (In)	9.65	11.02	11.02	13.00	17.77	21.65	25.98	27.17
Pull to Lift Capacity (Lbs)	70	64	64	64	77	77	77	77



Chain Falls

- Capacities 1100# - 44000#
- Load tested to 150% of rated capacity
- High quality alloy chain meets all international safety standards
- Rugged steel casing protects gears and bearings

- Spur gear design for efficiency, portability, and economy
- Equipped with a mechanical brake for load control in lifting and spotting
- Meets ASME/ANSI standards

Model	CH 050	CH 100	CH 150	CH 200	CH 300	CH 500	CH 750	CH 1000	CH 1500	CH 2000
Capacity (Lbs)	1100	2200	3300	4400	6600	11000	16500	22000	33000	44000
Net Weight (Lbs)	24	28	31	48	51	90	126	172	331	419
Number of Falls	1	1	1	1	2	2	3	4	6	8
Hand Chain Overhaul for 1 Ft Lift (Ft)	40.3	40.3	54.4	84.3	108.8	187.0	285.4	374.0	285.4	374.0
Min. Distance Between Hooks (In)	12.40	12.40	13.39	14.96	18.70	25.00	27.50	29.92	33.46	34.25
Pull to Lift Capacity (Lbs)	53	73	75	75	77	86	90	90	90 x 2	90 x 2



Trolleys

Model	PTR050	PTR100	PTR200	PTR300	PTR500	PTR750	PTR1000 Two Trolley Pins
Capacity (Lbs)	1100	2200	4400	6600	11000	16500	22000
I-Beam Flange Width (In)	2.95 – 8.0	2.95 – 8.0	3.93 – 8.0	3.93 – 8.0	4.92 – 8.0	5.90 – 8.0	5.90 – 8.0
Min. Radius Curve (In)	35.43	51.18	59.05	78.40	102.36	118.11	118.11
Headroom (In)	4.7	4.7	6.1	7.3	8.7	10.0	11.3

- Tested to 150% of rated capacity
- Anti-drop lugs are standard
- Sealed ball-bearing wheels



WISCOLIFT

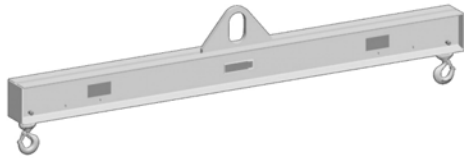
Working Safe is Working Smart.
W6396 Specialty Drive
Greenville, WI 54942
WiscoLift.com

Call: 800.242.3477
Greenville: 920.757.8832
Milwaukee: 262.253.2288
Fax: 920.757.8858
E-mail: CSR@WiscoLift.com

*Manufactured to exceed all OSHA and ASME B30.20 requirements.
Painted safety yellow for increased visibility.
Proof tested according to OSHA requirements.
Made in the U.S.A.*

Low Headroom, Multiple Length Lifting Beam

- Capacities 1000# - 40,000#
- Fixed and adjustable length
- Spans 2' - 24'
- Standard with alloy swivel latch hooks
- Ideally suited for adding stability to critical lifts



Ultra Low Headroom Lifting Beam

- Capacities 1000# - 10,000#
- Provides spacers to assure hook remains centered
- Standard with alloy swivel latch hook connections
- Hoist hook nests within beam



Twin Hoist Lifting Beam

- Capacities 4000# - 20,000#
- Quick and easy lifting of loads with two hoists
- Standard alloy swivel hook bottom connection
- Load-bearing swivel hook, eye hook, and custom connections available



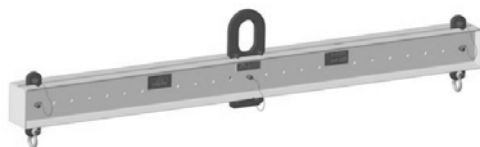
Small Length Fixed Beam

- Capacities 500# - 80,000#
- Spans 12" - 36"
- Supplied with shackles



Adjustable Lifting Beam

- Capacities 2000# - 15,000#
- Quick and easy adjustment for unbalanced loads
- Ideally suited for low headroom applications
- Shackle bottoms standard for rigging connections



Roll Lifting Beam

- Capacities 2000# - 10,000#
- Fixed or adjustable spans
- Fixed or rotating hooks



WISCOLIFT

Working Safe is Working Smart.
W6396 Specialty Drive
Greenville, WI 54942
WiscoLift.com

CUSTOM
DESIGNS
AVAILABLE!

Call: 800.242.3477
Greenville: 920.757.8832
Milwaukee: 262.253.2288
Fax: 920.757.8858
E-mail: CSR@WiscoLift.com

Adjustable Spread Telescoping Beam

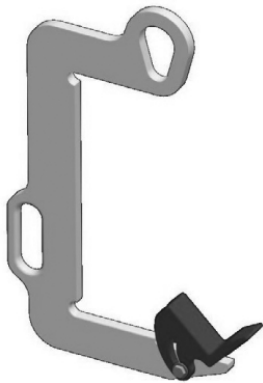
- Capacities 4000# - 20,000#; sold with bottom swivel hooks
- Capacities 40,000# - 150,000#; beam only (optional top rigging and shackles)
- Spans 5'6" - 30'
- Ideally suited for adding stability to critical lifts

**Basket Lifting Beam**

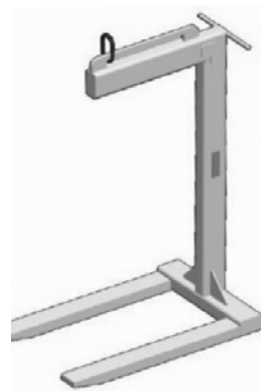
- Capacities 1000# - 10,000#
- Spans 4' - 16'
- Designed to be used with lifting slings in a basket hitch
- Two sets of lifting sling hooks are standard
- Hooks designed for 2" eye width
- Custom configurations available

**Coil-Lifter/Upender**

- Capacities 1000# - 7000#
- Weighs 17# - 61#
- Easy horizontal to vertical upending of coils

**Material Handling Pallet Lifter**

- Capacities 2000# - 8000#
- Fork length 36"
- Converts crane or hoist into aerial forklift

**Economy Fixed Span Lifting Beam**

- Capacities 500# - 6000#
- Spans 2' - 10'
- Shackle bottoms standard for rigging connections

**Bulk Container Lifting Beam**

- Capacities 2000# and 4000#
- Spans 36" and 48"
- Machined to exacting tolerances

**WISCOLIFT**

Working Safe is Working Smart.
 W6396 Specialty Drive
 Greenville, WI 54942
WiscoLift.com

CUSTOM
 DESIGNS
 AVAILABLE!

Call: 800.242.3477
 Greenville: 920.757.8832
 Milwaukee: 262.253.2288
 Fax: 920.757.8858
 E-mail: CSR@WiscoLift.com

PowerLift® Magnets

We recommend when lifting sheets over 8', use 2 or more lifts on a spreader bar to prevent sheet flexing, sagging or peel-off. Thin material is susceptible to magnetic bleed through, resulting in two sheets being lifted at once. Round Lifting Values are based on ideal conditions. Consult the factory before specifying these magnets for use on round materials. *Max. sheet lengths are selected due to sag characteristics of specified sheet. The item to be lifted must cover the entire length and width of the magnetic poles to properly engage and release the part.

CF = Consult Factory, N/A = Not Applicable (magnets will not turn "ON" with stated thicknesses)

- Capacities - flats from 250# - 6600#
- Handle locks in on/off position
- Lifts flats or rounds
- Conforms to ASME B30.20



Model No.	Maximum Holding Value in Lbs (Flat)	Maximum Holding Value in Lbs (Round)	Holding Values in Lbs								
			9 ga (6')	3/16 (6')	1/4 (6')	3/8 (8')	1/2 (8")	3/4 (8')	1 (10')	2 (10')	3 (10')
PNL0250	250	125	N/A	N/A	180	250	250	250	250	250	250
PNL0800	800	400	N/A	N/A	270	500	615	800	800	800	800
PNL1600	1800	800	N/A	N/A	CF	CF	800	1600	1600	1600	1600
PNL2500	2500	1250	N/A	N/A	N/A	N/A	CF	CF	1490	2500	2500
PNL5000	5000	2500	N/A	N/A	N/A	N/A	N/A	N/A	CF	2625	5000
PNL6600	6600	3300	N/A	N/A	N/A	N/A	N/A	N/A	N/A	N/A	6000

FX/FXP Lifting Magnets

On all magnets in the series, the unique handle design only requires a 90° rotation to either engage or disengage the magnet (versus the 120° or even 180° required on most on/off lifting magnets), making it easy for operators to use in applications where the magnet is lifting something from inside a bin or a deep trough. The handle also features a positive lock-on/lock-off mechanism that requires the operator to manually switch between the two states. This prevents the handle from being turned only partially on, or from being accidentally bumped to the "off" position and dropping the load prematurely. For information on the FXE 50L, FXE 80 and FXE 100 lifting magnets, contact our office.



Model No.	Maximum Holding Value in Lbs (Flat)	Maximum Holding Value in Lbs (Round)	Holding Values in Lbs								
			9 ga (6')	3/16 (6')	1/4 (6')	3/8 (8')	1/2 (8")	3/4 (8')	1 (10')	2 (10')	3 (10')
FX0330	330	165	N/A	N/A	142	330	330	330	330	330	330
FX0660	660	330	N/A	N/A	355	507	580	660	660	660	660
FX1320	1320	660	N/A	N/A	331	661	965	1320	1320	1320	1320
FX2200	2200	1100	N/A	N/A	N/A	772	1160	1984	2200	2200	2200
FX4400	4400	2200	N/A	N/A	N/A	N/A	965	2200	2646	4400	4400
FX6600	6600	3300	N/A	N/A	N/A	N/A	N/A	3850	3968	6600	6600
FXP0375	375	330	176	200	265	375	375	375	375	N/A	N/A
FXP0725	725	660	220	275	353	725	725	725	725	N/A	N/A
FXP1450	1450	1210	353	375	441	1060	1125	1450	1450	N/A	N/A

WISCOLIFT

Working Safe is Working Smart.
 W6396 Specialty Drive
 Greenville, WI 54942
WiscoLift.com

Call: 800.242.3477
 Greenville: 920.757.8832
 Milwaukee: 262.253.2288
 Fax: 920.757.8858
 E-mail: CSR@WiscoLift.com

Versalift™

- Capacities - flats from 150# - 1200#
- Locking on/off handle
- Test load feature
- Lift flats or rounds
- Conforms to ASME B30.20

**AdvantageLift™**

- Capacities - flats from 125# - 2000#
- Picks up sheets, tubular bars and pipes
- Lifting bail "lock-out" feature prevents handle from being rotated to the "Off" position

**Battery Lift Magnets**

- Capacities 3000# - 11000#
- Lifts flats only
- On-board charger
- Battery charge indicator

**FXE Permanent-Electro**

- Capacities 660# - 10600#
- Picks up ferrous metal sheets/parts
- Does not require battery backup system

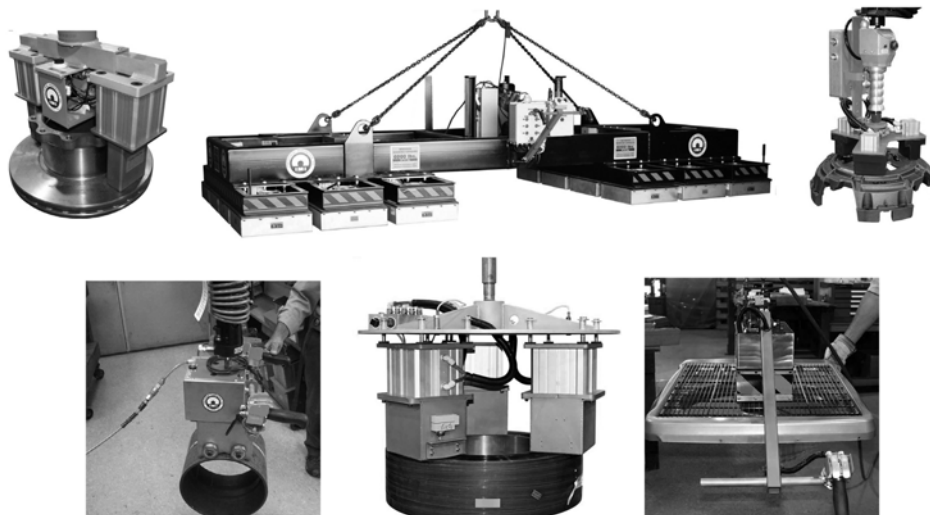
**Transporter®**

The patented Transporter® magnet utilizes a powerful, rare earth permanent magnet to pick and place heavy, nonflexing steel items, such as truck frames, or other rigid parts in automated transfer or manually operated material handling applications. The Transporter® offers increased material handling safety and a significant reduction over vacuum cups in shop air costs.

Ideal for applications in the Automotive, Appliance and Office Furniture industries, the Transporter® represents a new generation of tooling technology. Available in many standard and custom configurations to best suit the needs of your application.

**Air Cylinder Actuated Permanent Magnet**

- Controls require no electricity
- Basis for custom magnetic lifters
- Will not drop parts if air loss occurs
- Ideal for manual & automated applications

**Custom Magnets****WISCOLIFT**

Working Safe is Working Smart.
W6396 Specialty Drive
Greenville, WI 54942
WiscoLift.com

Call: 800.242.3477
Greenville: 920.757.8832
Milwaukee: 262.253.2288
Fax: 920.757.8858
E-mail: CSR@WiscoLift.com

**All clamps bear the CE-mark and are individually tested.
The safety factor of each clamp is over 5 times the WLL.
The WLL and the jaw opening are clearly marked.
Clamps delivered with manual test certificate.**

Vertical Lifting Clamps

TSU/TSEU/STSU

- Capacities 1600# - 66,000#
- Universal shackle
- Locked in open/closed position
- Jaw opening capacities 0 - 5.90"
- Clamps weigh 4# - 390# each



TS/TSE/STS

- Capacities 1650# - 66,000#
- Locked in open/closed position
- Jaw opening capacities 0-5.90"
- Clamps weigh 4# - 365# each



TS-R/TSE-R/TSU-R/TSEU-R Stainless Steel Lifting Clamp

- Capacities 1600# - 16,500#
- Universal shackle
- Locked in open/closed position
- Jaw opening capacities 0 - 2.16"
- Clamps weigh 4# - 62# each



Beam Lifting Clamps

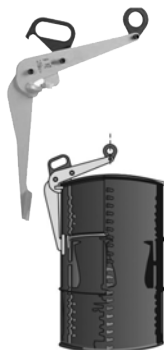
FSV/FSVS/FSVSU

- Capacities 2200# - 22,000#
- Can be used as upside down attached anchor point (temporary) lifting point
- Jaw opening capacities 2.95" - 22.04"
- Clamps weigh 12# - 111# each



TVKH Oil Drum Lifting Clamp

- Capacities per pair 2200# - 33,000#
- Single clamp application on empty or filled drums
- Center of gravity is always above the lifting point
- Jaw opening capacities 0 - .98"
- Clamps weigh 16# each



Horizontal Lifting Clamps

FHX/FHSX

- Capacities per pair 2200# - 55,000#
- Minimum 2 clamps must always be used
- Jaw opening capacities 0 - 5.90"
- Clamps weigh 6# - 117# each



TNMH Non-Marking Lifting Clamp

- Capacities per pair 2200# - 13,200#
- Minimum 2 clamps must always be used
- Jaw opening capacities 0 - 1.96"
- Clamps weigh 6# - 40# each



THSK

- Capacities per pair 3300# - 19,800#
- Minimum 2 clamps must always be used
- Jaw opening capacities .11" - 16.53"
- Clamps weigh 10# - 24# each



Screw Clamps

TSCC/TSCC-W

- Capacities 1100# - 13,200#
- Universal clamp for vertical/horizontal lifting
- Can be used as upside down temporary anchor point
- Jaw opening capacities 0 - 3.93"
- Clamps weigh 3# - 49# each



TBS HP-Profile

- Capacities 3300# - 6600#
- For use as temporary lifting point where HP-profile is being used
- Clamps weigh 7# - 14# each



Special Application Clamps

TBC/TBC-A Vertical Concrete Pipe Lifting Clamp

- Capacities per pair 2200# - 33,000#
- Minimum 2 clamps must always be used
- Jaw opening capacities 0 - 5.90"
- Clamps weigh 6-110.5# each



TBLC Non-Marking Lifting Clamp For Materials with Parallel Sides

- Capacities 1100# - 6600#
- For lifting/transporting of stainless steel, wood, aluminum, natural stone, painted materials
- Jaw opening capacities 1.18" - 19.68"
- Clamps weigh 16# - 73# each



WISCOLIFT

Working Safe is Working Smart.
W6396 Specialty Drive
Greenville, WI 54942
WiscoLift.com

Call: 800.242.3477
Greenville: 920.757.8832
Milwaukee: 262.253.2288
Fax: 920.757.8858
E-mail: CSR@WiscoLift.com

*All clamps include company name, logo, WLL and jaw opening permanently stamped on body.
Each product is individually serialized, with the serial number and proof load test date stamped on the body.
Welded alloy steel body for strength and smaller size.
All sizes are RFID equipped.*

Universal Lifting Clamps

IPU10H

- Capacities .5 ton - 6 ton
- Universal hoisting eye
- Suitable for lifting, turning 180° and vertical transfer of steel plates
- For use on materials with a surface hardness up to 450 HB
- Jaw opening capacity 0 - 2"
- Clamps weigh 4.19# - 65.1# each



IPU10S

- Capacities .5 ton - 12 ton
- Universal hoisting eye
- Suitable for lifting, turning 180° and vertical transfer of steel plates
- Designed specifically for stainless steel material
- Jaw opening capacity 0 - 2.13"
- Clamps weigh 4.19# - 126# each



IPU10

- Capacities .5 ton - 30 ton
- Universal hoisting eye
- Suitable for lifting, turning 180° and vertical transfer of steel plates
- Jaw opening capacity 0 - 6.13"
- Clamps weigh 4.19# - 337# each



Horizontal Lifting Clamps

IPH10E / IPH10JE

- Capacities per pair 2 ton - 12 ton
- Two or more clamps must be used together
- For non-sagging bundles and/or materials
- Jaw opening capacities 0 - 4.73"
- Clamps weigh 12# - 47.4# each



IPHOZ

- Capacities per pair .75 ton - 15 ton
- Two or more clamps must be used together
- For use on thin sheet and materials that will bend or sag when lifted
- Jaw opening capacities 0 - 2.38"
- Clamps weigh 12# - 158# each



Non-Marring Vertical Lifting Clamps

IPNM10P

- Capacities .5 ton - 1 ton
- Full 180° turning range for material transfer, turning or moving
- Protective cover reduces the risk of damage to surrounding plates
- Jaw opening capacity 0 - 1.56"
- Clamps weigh 6# - 12# each



WISCOLIFT

Working Safe is Working Smart.
W6396 Specialty Drive
Greenville, WI 54942
WiscoLift.com

Call: 800.242.3477
Greenville: 920.757.8832
Milwaukee: 262.253.2288
Fax: 920.757.8858
E-mail: CSR@WiscoLift.com

Full range of vacuum system components including suction cups, vacuum cups, electric, mechanical and air vacuum pumps and vacuum generators.
Ergonomic vacuum lifters are available for easier mobility and safety.
All products are designed and built in Hudson, MA, USA.

Vacuum Lifters with Mechanical Generators

- No installation required. Simply attach the hook of a hoist, crane, or boom truck to the lifter and it's ready for operation!
- Each lifter comes standard with a vacuum loss sensor and warning device.
- Attach and release are controlled by the up and down movement of the hoist.
- Unit can be spun around 360° without limitation, as there are no electric or air lines to tangle.
- The vacuum control valve alternates between attach/release each time the lifter is picked up or set down.
- An operator cannot release a load without setting down the load and until the chain is slack.
- No control buttons of any kind on the lifter.
- No external power source or festooning required.
- Not affected by power failures or power brownouts.
- Safe around water burning tables.
- Totally silent operation creates no oil mist or pollution.
- Extremely efficient, low-cost operation.
- Lowest maintenance requirements of all vacuum lifters.
- Rebuilds are infrequent and simple.
- Suitable for 100% duty cycle, 24 hours a day operation.
- They never overheat or burnout.



Vacuum Tube Lifting System

- Capacity of 650#
- Ergonomic lift assist devices.
- Designed for high production use.
- Continuous duty cycle.
- Unlimited starts and stops per minute are possible.
- Vacuum attachment to and release of the load is instantaneous.



Vacuum Lifters with Powered Vacuum Generators

- Electric or compressed air powered vacuum generator.
- Each lifter comes standard with a vacuum loss sensor and warning device.
- 110 VAC or 90 psi clean compressed air for vacuum generation.
- Power assisted or gravity lift available.



Custom Vacuum Lifting System

Customized vacuum lifting systems can be designed for your particular application with unlimited starts and stops per minute and capacities of up to 500 lbs.

The photo on the right is a custom vacuum lifter designed with special sensing technology.



WISCOLIFT

Working Safe is Working Smart.
 W6396 Specialty Drive
 Greenville, WI 54942
WiscoLift.com

Call: 800.242.3477
 Greenville: 920.757.8832
 Milwaukee: 262.253.2288
 Fax: 920.757.8858
 E-mail: CSR@WiscoLift.com

**Designed to handle heavy duty lifting and positioning applications.
Velocity fuses on each cylinder prevent the table from collapsing.
Ergonomic equipment that reduces injury due to pushing or pulling heavy containers.
Wide base units are designed for wider platforms and greater side load support.**

Lift Table

- Capacities 2000# - 6000#
- Platform size from 24" W x 36" L to 72" W x 96" L
- Standard base size 24", 36", or 48" W x 36", 48", 60", or 72" L



Heavy Duty Lift Table

- Capacities 8000# - 12000#
- Platform size from 36" W x 48" L to 72" W x 96" L
- Standard base size 36" or 48" W x 48" or 72" L



Air Bag Lift Table

- Capacities 1000# - 6000#
- Platform size from 32" W x 48" L to 72" W x 72" L
- Standard base size 32" or 48" W x 48" L
- Safety maintenance stop



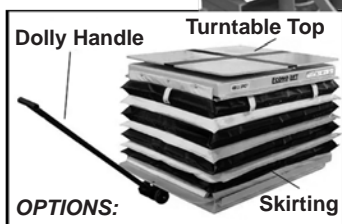
Double Scissor Lift Table

- Capacities 1000# - 6000#
- Platform size from 24" W x 36" L to 72" W x 72" L
- Standard base size 24", 36" or 48" W x 48" L



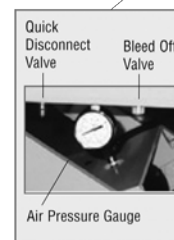
Spring Table

- Capacities 400# - 4500#
- Platform size from 32" W x 48" L to 54" W x 54" L
- Standard base size 32" W x 48" L
- Lowered height 10"



Ergo Self Leveller

- Capacities 450# - 4500#
- Platform size from 32" W x 48" L to 56" W x 72" L
- Standard base size 32" W x 48" L
- Lowered height 9"

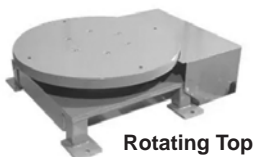


Lift Table Accessories/Options

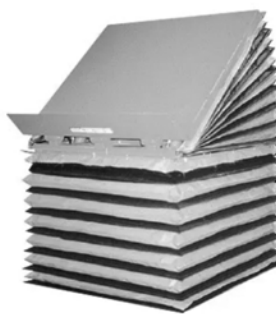
Lift Table/Tilter Options

- Oversized platforms
- Corner gussets
- Beveled edges for pit mounting
- Eye-bolts for pit mounting
- Rotating tops
 - spring detents
 - manual detents
- Roller conveyor, ball transfer tops
- Bellow safety skirting
- Semi-portable

- Portable
- Motion stabilizer
- Fork pockets
- Safety lock-out valves
- Ross air valves



Rotating Top



Bellow Safety Skirting

Hydraulic Power Units



WISCOLIFT

Working Safe is Working Smart.
W6396 Specialty Drive
Greenville, WI 54942
WiscoLift.com

Call: 800.242.3477
Greenville: 920.757.8832
Milwaukee: 262.253.2288
Fax: 920.757.8858
E-mail: CSR@WiscoLift.com

**Do you need a Lift/Tilt Table with specific dimensions?
Fill out our Custom Lift/Tilt Table Quote Form below and email to CSR@wiscolift.com.**

Air Bag Tilt Table

- Capacities 1000# - 6000#
- Tilt angle 0 - 40°
- Front retaining lip 8" high
- Lowered height 9"
- Safety restraining chain
- Available with air bag or hydraulics



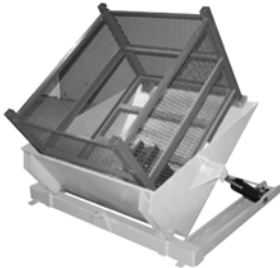
Lift/Tilt Table

- Capacities 1000# - 4000#
- Tilt angle 0 - 30/45°
- Lowered height 12"
- Hand or foot controlled



Drive-On Tilt Table

- Capacities 1000# - 4000#
- Tilt angle 0 - 45°
- Lowered height 3/8"-1/2" edge
- Hold down tabs on all four corners
- Hand or foot controlled



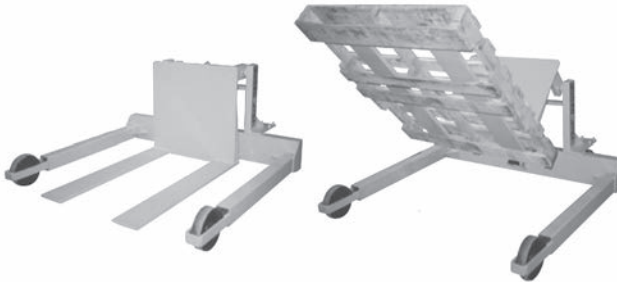
Stationary Tilter

- Capacities 2000# - 6000#
- Tilt angle 0 - 85°
- Lowered height 5/16"-3/8" c/w beveled edge
- Hold down tabs on three points
- Hand or foot controlled



Straddle Tilter

- Capacities 2000# - 6000#
- Lowered height 2-1/2"
- Joy stick, air/hydraulic foot pedal or hand-held pendant controlled



Custom Lift/Tilt Table Quote - Email to CSR@WiscoLift.com

Company Name: _____
Address: _____
Contact's Phone _____

Contact Name: _____
City / State / Zipcode: _____
Contact's Email Address: _____

Need: Immediate Budgeted

Working Load Limit
(Enter between 2000# - 6000#): _____ Lbs.

Total Qty.: _____

Vertical Travel: 24" 36"

Voltage: Standard 110/1/60 Other _____

Platform size
(Width x Length in inches): _____

Control Type: Foot Hand

Table Type: Standard Rotating
 Tilting

WISCOLIFT

Working Safe is Working Smart.
W6396 Specialty Drive
Greenville, WI 54942
WiscoLift.com

Call: 800.242.3477
Greenville: 920.757.8832
Milwaukee: 262.253.2288
Fax: 920.757.8858
E-mail: CSR@WiscoLift.com

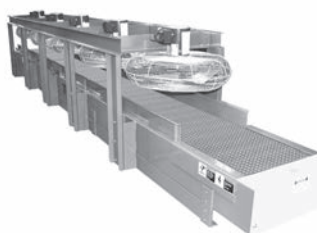
Cleated Belt Conveyors

Handle parts up/down an incline with an economical parts conveyor. The parts conveyors can be supplied with different cleat heights and spacing to suit your application. Belt widths can be ordered from 4" wide to 48" wide. Standard belts are PVC, neoprene, white food handling or other optional belt types per your specifications. Portable undercarriages are standard but floor supports can also be supplied.



Steel Wire Mesh Belt Conveyors

Wire mesh belt conveyors can be used to convey hot, oily, or cold products in cooling oven or other special spraying and drying conditions. WiscoLift offers either a Roller Bed Deck or Wear Strip Deck to meet your material handling needs.



Motorized Roller Conveyors

The motorized conveyor utilizes a 24 volt DC motorized drive within a roller. Adjacent rollers are slave-driven from it using chains, timing belts, or O-belts. Loads up to 3900 lbs. can be moved with these clean and efficient motorized roller systems.

- Maintenance free
- Lower operating cost
- Plug & play controls
- Lower power consumption
- Reversible
- No awkward motor & gearbox
- Quieter
- Dynamic braking
- Low profile pop-up transfer
- 24v safety
- Variable speed



Roller Bed Belt Conveyors

Roller Bed Belt Conveyors are designed for transporting heavy loads over long distances with less horsepower than slider bed conveyors.

- Rollers can be mounted on 3", 4" or 6" centers depending on the application.
- A heavier roller and large diameter drive pulley can be used when the load or length dictates upgrading the standard unit.



Roller Conveyor Top



WISCOLIFT

Working Safe is Working Smart.
W6396 Specialty Drive
Greenville, WI 54942
WiscoLift.com

Call: 800.242.3477
Greenville: 920.757.8832
Milwaukee: 262.253.2288
Fax: 920.757.8858
E-mail: CSR@WiscoLift.com

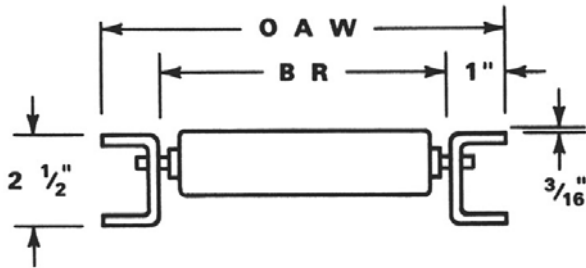
Gravity Conveyors

1-3/8" Roller Conveyor

These 1-3/8" diameter gravity roller conveyors are extremely popular and are a standard in the industry. Ideal for the movement of light-medium weight packages. They are easily portable and can be used as a temporary or a permanent conveyor line. Poly covers available on 3" centers or more.



- Rollers: 1-3/8", 18 Ga. Galv./Alum.
- Axles: 1/4" Round, Spring Loaded
- Frame: 2-1/2" x 1" x 1", 12 gauge galvanized or 1/8" aluminum formed channel
- 5 cross braces
- Hook and bolt couplers standard
- Roller capacity - Steel: 50#, Aluminum: 40#
- 10' frame capacity - Steel: 50#/ft, Aluminum: 30#/ft
- 5' frame capacity - Steel: 200#/ft, Aluminum: 100#/ft



Accordion Conveyors

Medium Duty Accordion Wheel Specification

- Conform to the various shapes necessary for ease of product handling with lengths available up to 60 feet
- Load capacity up to 226 lbs. per lineal ft. when fully extended
- Standard height adjustment: 28" - 44"
- 1 Box stop and 1 set of hook couplers per unit
- Casters: 5" x 1-1/2" swivel with foot brake



Medium Duty Accordion Roller Specification

- Designed for packages with flat or irregular bottoms
- Load capacity up to 275 lbs. per lineal ft.
- 1" - 3/8" O.D. galvanized steel rollers on 5" - 1/4" axle centers
- 28" - 36"
- Box stop, pull handle & couplers standard
- 5" x 1-1/2" swivel/wheel lock casters



Heavy Duty Accordion Wheel Specification

- Load capacity up to 275 lbs. per lineal ft. when fully extended
- Double cross braces and double wall inner leg supports
- 7 gauge side links with black epoxy finish
- Standard height adjustment: 28" - 36"

Conveyor Accessories

Gates

Manual or spring assisted gates can be used to provide access to personnel or equipment in other areas of the building. Used with skate wheel or roller conveyors. For special applications, consult WiscoLift.



Zone Accumulation

Accumulation Conveyors are designed to accumulate products and containers into zones without contact, commonly termed Zero Pressure Accumulation or ZPA. Available "Plug & Go" logic makes control easy and reduces cost.

- Zones have individual conventional drives
- Zones are engaged by air clutch from a single drive
- Zones have individual motorized roller drives



WISCOLIFT

Working Safe is Working Smart.
W6396 Specialty Drive
Greenville, WI 54942
WiscoLift.com

Call: 800.242.3477
Greenville: 920.757.8832
Milwaukee: 262.253.2288
Fax: 920.757.8858
E-mail: CSR@WiscoLift.com

Conveyor Accessories (Cont'd)

Ball Transfer Table

The ball transfer table is ideal for products which must be rotated or positioned from one work station to another. Steel balls are friction-free and easily guide boxes, packages, etc. in any direction. Can be floor mounted or placed on adjustable H-standards for work-height jobs. Three separate ball styles available. Custom sizes optional; stainless steel tables, stainless or nylon ball, etc.



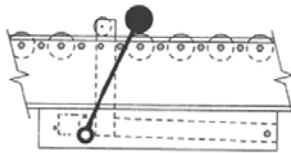
Turntables

Turntables provide a method of rotating unit loads when material lines intersect or change directions. Unlike Chain Transfer Devices, they maintain product orientation through an intersection. They can also be used to reverse the orientation of a product or allow a pass through depending on application requirements. When used in a system, they will typically slow throughput and require more complex controls to ensure safety.

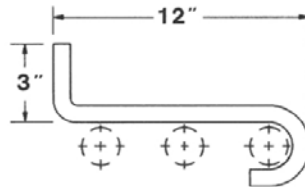


Chain Transfer Table

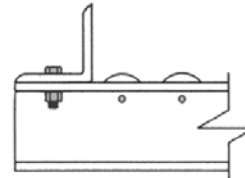
Transfer chain tables are ideal for transferring pallets and containers with bottoms capable of conveying at right angles over the small gap that exists because of the conveyor or side frame rail.



Hand Operated Roller Stop:
Hand operated push-up roller type.



Package Stop:
12 Ga. removable hook-on type provides positive stops.



Angle End Stop:
1-1/2" x 1-1/2" x 10 Ga. Steel angle usually bolted to end of conveyor frame.

Custom Controls

WiscoLift can provide control systems for all types of powered conveyors integrating fixed and variable speed controls, variety of operator controls including pedestals, hand held, foot controls and radio remote controls, warning/status lights and tones, photo eyes and proximity sensors, all with the highest level of safety and versatility.



WISCOLIFT

Working Safe is Working Smart.
W6396 Specialty Drive
Greenville, WI 54942
WiscoLift.com

Call: 800.242.3477
Greenville: 920.757.8832
Milwaukee: 262.253.2288
Fax: 920.757.8858
E-mail: CSR@WiscoLift.com

Specialty Rollers/Covers

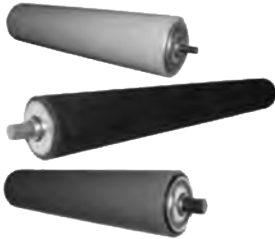
Stainless Steel Roller

Due to differences in bearing hub projections, all rollers must be ordered with a between rail dimension or out to cut length on bearings. Precision bearings available on 1.9" and 2.5" rollers.



White Poly Cover

- Non-marking white polyester
- 1/16" to 1/8" thick
- Available on 3/4", 1-3/8", 1.9", and 2" rollers
- Good product protection



Rubber Cover

- Black rubber coated roller
- 1.9" O.D. and 1-5/8" I.D.
- 7/16" hex spring loaded axle
- Non-slip surface

Polyurethane Cover

- Polyurethane roller is softer for better product protection
- 1/8" thick
- Available on 1.9" and 2-1/2" O.D. rollers

Roller Sizes

Model No	O.D. Tubing In	Finish	Gauge Material	Axle Size In
034-AR	3/4	Alum	20	1/4 rd
034-SR	3/4	Galv	20	1/4 rd
078-SR	7/8	Plain	13	1/4 rd
138-AR	1 3/8	Alum	18	1/4 rd
138-SR	1 3/8	Galv	18	1/4 rd
138-SRM	1 3/8	Galv	18	5/16 hex
158-SSR	1 5/8	Stainless Steel	16	7/16 hex
190-PVC	1.9	PVC	145	7/16 hex
190-SRL	1.9	Galv	16	1/4 rd
190-SRM	1.9	Galv	16	7/16 hex
190-SRH	1.9	Plain	12	7/16 hex
200-SSR	2	Stainless Steel	16	7/16 hex
200-ARL	2	Alum	16	1/4 rd
200-SRL	2	Galv	16	1/4 rd
200-SRM	2	Galv	16	7/16 hex
200-SRH	2	Plain	12	7/16 hex
250-SRM	1 1/2	Plain	14	7/16 hex
250-SRH	2 1/2	Plain	11	11/16 hex
258-SRH	2 5/8	Plain	7	11/16 hex
350-SRH	3 1/2	Plain	216	1 1/16 hex
350-SRM	3 1/2	Plain	10	11/16 hex

Installation, Maintenance and Service

Wiscolift's team of service technicians and electricians are trained in installation and maintenance for all conveyor lines.

Reduce the amount of downtime by selecting our periodic maintenance where we:

- Check that belting is tracked properly and tension is properly adjusted.
- Assess amount of wear on the drive pulley.
- Clear any visible debris around the drive and take-up pulleys.
- Clear any debris around the shaft and drive sprockets of mesh conveyors.
- Check for belt stretching.
- Lubricate all bearings, drive chains and take-up pulleys as necessary.
- Replace any rollers if necessary.
- Additional adjustments or replacement parts as required for proper functioning.



WISCOLIFT

Working Safe is Working Smart.
 W6396 Specialty Drive
 Greenville, WI 54942
Wiscolift.com

Call: 800.242.3477
 Greenville: 920.757.8832
 Milwaukee: 262.253.2288
 Fax: 920.757.8858
 E-mail: CSR@Wiscolift.com

Synthetic slings offer excellent load protection. Unlike other sling types, they generally do not mar or scratch machined surfaces. They are equally suited for use on other delicate surfaces. Care should be taken to insure that no foreign materials, which may induce scratches or other damage, are present in the sling body.

- Synthetic slings stretch under load (3-4% for polyester). It is this stretch which may create damage on surfaces.
- Long term exposure to ultraviolet light will have a deteriorating effect on web slings. Efforts to minimize ultraviolet exposure will enhance sling longevity and safety.
- Web slings provide superior gripping ability by molding and conforming to the load's surface.
- Web slings are unaffected by most chemicals. Please note the chemical effects chart below. They should not be used in conditions where temperatures will exceed 180° F.

Lifting Sling Removal Criteria

Immediately remove web slings from service if any of the following are present:

- Acid or caustic burns.
- Melting or charring of any part of the sling surface.
- Snags, punctures, tears or cuts.
- Broken or worn stitches.
- Distortion, wear or fracture of fittings.
- Other apparent defects which cause doubt as to the strength of the sling should be referred to the Manufacturer for determination.

NYLON-POLYESTER CHEMICAL EFFECTS CHART – GENERAL USE ONLY

	Acid	Alcohol	Aldehydes	Strong Alkalis	Bleach Agents	Dry Clean Chemicals	Ethers	Halo-generated Hydro-carbons	Hydro Carbons	Ketones	Oils Crude	Oils Lubricating	Soap & Detergents	Water & Sea Water	Weak alkalis
NYLON	NO	OK	OK	OK	NO	OK	OK	OK	OK	OK	OK	OK	OK	OK	OK
POLYESTER	*	OK	NO	**	OK	OK	NO	OK	OK	OK	OK	OK	OK	OK	OK

* Disintegrated by concentrated sulfuric acid.
 ** Disintegrated by strong alkalis at elevated temperatures.

Sling Angle Stress Factors

Consideration must be given to the angle at which a sling is to be used. **Any angle from vertical will decrease the sling's capacity.** The amount of lost capacity is determined by the "sling to hook angle," shown as Angle "A." To calculate the capacity of a sling at an angle multiply the sling's load rating by the appropriate factor in the "Sling Load Chart." This will give you the sling's reduced rated capacity.

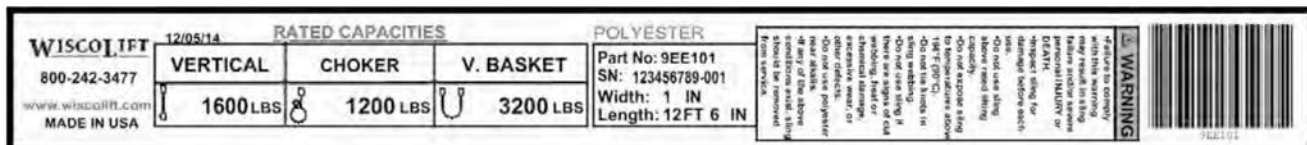
Angle-Degrees	Angle-Factor	Angle-Degrees	Angle-Factor
90°	1.000	50°	.7660
85°	.9962	45°	.7071
80°	.9848	40°	.6428
75°	.9659	35°	.5736
70°	.9397	30°	.5000
65°	.9063	25°	.4226
60°	.8660	20°	.3420
55°	.8192	15°	.2589



Custom Web Sling Tags

Custom web sling tags are white vinyl with a durable clear protective coating and available in full color.

- Customize with your company logo and bar code.
- Customize tag text and layout.
- Available in 6-3/4" x 3/4" and 6-3/4" x 1-5/8".






WISCOLIFT
 Working Safe is Working Smart.
 W6396 Specialty Drive
 Greenville, WI 54942
WiscoLift.com



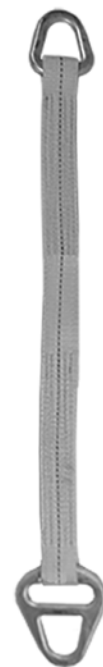
Call: 800.242.3477
 Greenville: 920.757.8832
 Milwaukee: 262.253.2288
 Fax: 920.757.8858
 E-mail: CSR@WiscoLift.com

Type 1 - Triangle/Choker Slings

Type 1 slings provide superior lateral support for sling web during choking application. Hardware is specifically designed and prepared for use with web slings. Contact surfaces have been ground smooth to eliminate premature web wear. Triangle choker slings are used in all styles of sling hitches.




Specifications			Rated Capacities in Pounds Per Type of Hitch		
Sling Width	Stock #	# of Plys	 Choker	 Vertical	 90° Basket
2"	9TC102	1	2500	3100	6200
3"	9TC103	1	3700	4600	9200
4"	9TC104	1	4900	6100	12200
6"	9TC106	1	7300	9100	18200

Available in 1, 2, and 4-Ply.



Type 2 - Triangle/Triangle Slings

Type 2 slings are similar to Type 1 but designed to be normally used in a basket hitch. Can be used in a vertical hitch but not recommended in choking applications.

Specifications			Rated Capacities in Pounds Per Type of Hitch		
Sling Width	Stock #	# of Plys	 Choker	 Vertical	 90° Basket
2"	9TT102	1	N/A	3100	6200
3"	9TT103	1	N/A	4600	9200
4"	9TT104	1	N/A	6100	12200
6"	9TT106	1	N/A	9100	18200

Available in 1, 2, and 4-Ply.






NOTE: Higher capacities available. Please call for information.
WARNING: Do not exceed rated capacities.



Type 3 & 4 - Eye and Eye Slings

Type 3, Flat Eye and Eye Slings, are used in all styles of sling hitches.
Type 4, Twisted Eye and Eye Slings, are preferred for choker applications.

Specifications			Rated Capacities in Pounds Per Type of Hitch		
Sling Width	Stock #	# of Plys	 Choker	 Vertical	 90° Basket
1"	9EE101	1	1200	1600	3200
1"	9EE201	2	2400	3000	6000
1"	9EE301	3	3600	4500	9000
1"	9EE401	4	4800	6000	12000
2"	9EE102	1	2400	3200	6400
2"	9EE202	2	4800	6000	12000
2"	9EE302	3	6400	9000	18000
2"	9EE402	4	9600	12000	24000
3"	9EE103	1	3600	4800	9600
3"	9EE203	2	7200	9000	18000
3"	9EE303	3	10800	13500	27000
3"	9EE403	4	14400	18000	36000
4"	9EE104	1	4800	6400	12800
4"	9EE204	2	9600	12000	24000
4"	9EE304	3	14400	18000	36000
4"	9EE404	4	19200	24000	48000
5"	9EE105	1	6000	8000	16000
5"	9EE205	2	12000	15000	30000
5"	9EE305	3	18000	22500	45000
5"	9EE405	4	24000	30000	60000
6"	9EE106	1	7200	9600	19200
6"	9EE206	2	14400	18000	36000
6"	9EE306	3	21600	24000	48000
6"	9EE406	4	28800	36000	72000



Type 3



Type 4

- NOTE:**
- Slings available up to 12" wide.
 - When ordering, choose the proper width and capacity sling desired and use the stock number specified.
 - When ordering Twisted Eye, add length desired and add "TW."

WARNING: Do not exceed rated capacities.

WISCOLIFT




Working Safe is Working Smart.
W6396 Specialty Drive
Greenville, WI 54942
WiscoLift.com

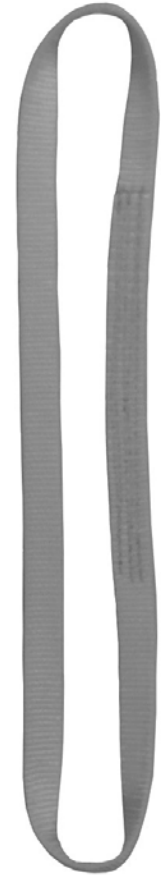
CUSTOM
DESIGNS
AVAILABLE!

Call: 800.242.3477
Greenville: 920.757.8832
Milwaukee: 262.253.2288
Fax: 920.757.8858
E-mail: CSR@WiscoLift.com

Type 5 - Endless Type Slings

Type 5, Endless Sling Types, are used in all styles of sling hitches.

Specifications			Rated Capacities in Pounds Per Type of Hitch		
Sling Width	Stock #	# of Plys	 Choker	 Vertical	 90° Basket
1"	9EN101	1	2500	3200	6400
1"	9EN201	2	5000	6400	12800
1"	9EN301	3	7500	9600	19200
1"	9EE401	4	10000	12800	25600
2"	9EN102	1	5000	6400	12800
2"	9EN202	2	10000	12800	25600
2"	9EN302	3	15000	19200	38400
2"	9EN402	4	20000	25600	51200
3"	9EN103	1	7500	9600	19200
3"	9EN203	2	15000	19200	38400
3"	9EN303	3	22500	28800	57600
3"	9EN403	4	30000	38400	76800
4"	9EN104	1	10000	12800	25600
4"	9EN204	2	20000	25600	51200
4"	9EN304	3	30000	38400	76800
4"	9EN404	4	40000	51200	102400
5"	9EN105	1	12500	16000	32000
5"	9EN205	2	25000	32000	64000
5"	9EN305	3	37500	48000	96000
5"	9EN405	4	50000	64000	128000
6"	9EN106	1	15000	19200	38400
6"	9EN206	2	30000	38400	76800
6"	9EN306	3	45000	57600	115200
6"	9EN406	4	60000	76800	153600



Type 5

- NOTE:**
- Slings available up to 12" wide.
 - When ordering, choose the proper width and capacity sling desired and use the stock number specified, add the length desired.

WARNING: Do not exceed rated capacities.

WISCOLIFT




Working Safe is Working Smart.
W6396 Specialty Drive
Greenville, WI 54942
WiscoLift.com

CUSTOM
DESIGNS
AVAILABLE!

Call: 800.242.3477
Greenville: 920.757.8832
Milwaukee: 262.253.2288
Fax: 920.757.8858
E-mail: CSR@WiscoLift.com

Type 6 - Returned Eye Slings

Type 6 are used for heavy duty applications where higher capacities and superior wear resistance are required. Wear resistant material (cordura nylon) is sewn to all sling surfaces, including eyes. Extremely durable compared to other sling types. Returned eye slings are used in all styles of sling hitches.

Specifications			Rated Capacities in Pounds Per Type of Hitch		
Sling Width	Stock #	# of Plys	 Choker	 Vertical	 90° Basket
2"	9RE102	1	2500	3200	6400
2"	9RE202	2	5000	6400	12800
3"	9RE103	1	3750	4800	9600
3"	9RE203	2	7500	9600	19200
4"	9RE104	1	5000	6400	12800
4"	9RE204	2	10000	12800	25600
6"	9RE106	1	7500	9600	19200
6"	9RE206	2	15000	19200	38400

NOTE: Higher capacities available. Call for information.
WARNING: Do not exceed rated capacities.



Type 6

CARE & USAGE

Both nylon and polyester webbing have a low water absorption rate, making them flexible, light, and easy to handle even after prolonged soaking in water. Both also show excellent resistance to most mildew and fungus, although dirt that accumulates on slings may support their growth, and that's why regular cleaning is very important.

Inspect your sling before each use since tensile strength may decrease with each use. Web slings should be stored in a cool, dry, and dark place.

- Select a sling of suitable capacity. When in doubt, use a larger capacity sling.
- Do not run a sling around sharp corners without corner guards.
- Do not attach a sling to fittings that have sharp edges or corners.
- Avoid formation of knots or twists in the legs or sling body.
- Take up slack slowly to avoid shock loading the sling.
- Use a tag line on the load if necessary to prevent sling and load rotation.

Environmental/Chemical Factors

- Exposure to sunlight may cause mechanical or chemical damage.
- Nylon and polyester slings should not be used in temperatures in excess of 180 degrees Fahrenheit or -40 degrees Fahrenheit.
- Chemicals such as acids and alkalis affect the strength of slings in varying degrees ranging from none to total degradation.

WISCOLIFT

Working Safe is Working Smart.
W6396 Specialty Drive
Greenville, WI 54942
WiscoLift.com

Call: 800.242.3477
Greenville: 920.757.8832
Milwaukee: 262.253.2288
Fax: 920.757.8858
E-mail: CSR@WiscoLift.com

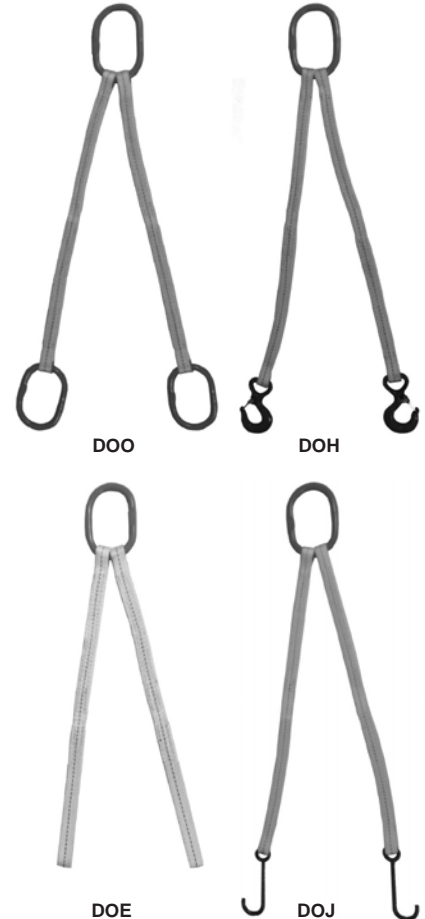
Single and Double Leg Bridle Slings are available in a variety of sizes and styles. Sling hooks on all assemblies are complete with latches. Lighter in weight than comparable alloy chain or wire rope slings. Not suitable for conditions where temperature exceeds 180° F.

Specifications	Web Slings			Rated Capacities in Pounds Per Type of Hitch		
	Single & Double Bridle	# of Plys	Vertical	60°	45°	30°
1"	9SOH101	1	1600	N/A	N/A	N/A
1"	9SOO101	1	1600	N/A	N/A	N/A
1"	9SHH101	1	1600	N/A	N/A	N/A
2"	9SOH102	1	1600	N/A	N/A	N/A
2"	9SOO102	1	1600	N/A	N/A	N/A
2"	9SHH102	1	1600	N/A	N/A	N/A
1"	9SOH201	2	3000	N/A	N/A	N/A
1"	9SOO201	2	3000	N/A	N/A	N/A
1"	9SHH201	2	3000	N/A	N/A	N/A
2"	9SOH202	2	6000	N/A	N/A	N/A
2"	9SOO202	2	6000	N/A	N/A	N/A
2"	9SHH202	2	6000	N/A	N/A	N/A
1"	9DOH101	1	N/A	2750	2250	1600
1"	9DOO101	1	N/A	2750	2250	1600
1"	9DOE101	1	N/A	2750	2250	1600
2"	9DOH102	1	N/A	5100	4200	3000
2"	9DOO102	1	N/A	5100	4200	3000
2"	9DOE102	1	N/A	5100	4200	3000
1"	9DOH201	2	N/A	5100	4200	3000
1"	9DOO201	2	N/A	5100	4200	3000
1"	9DOE201	2	N/A	5100	4200	3000
2"	9DOH202	2	N/A	10200	8400	6000
2"	9DOO202	2	N/A	10200	8400	6000
2"	9DOE202	2	N/A	10200	8400	6000

Single Leg Bridle



Double Leg Bridle



- NOTE:**
- Consult with your WiscoLift Sales Rep for properly sizing the master ring.
 - Variety of master rings available.
 - 3-Leg and 4-Leg slings available.

WARNING: Do not exceed rated capacities.

WISCOLIFT
 Working Safe is Working Smart.
 W6396 Specialty Drive
 Greenville, WI 54942
WiscoLift.com

CUSTOM
 DESIGNS
 AVAILABLE!

Call: 800.242.3477
 Greenville: 920.757.8832
 Milwaukee: 262.253.2288
 Fax: 920.757.8858
 E-mail: CSR@WiscoLift.com

Wide Body / Cargo Slings

Ideally suited for lifts requiring both heavy duty capacity and good lateral support for the load. The wider bearing surface provides greater load control than is possible with narrower slings.

Specificatic		Web Slings Wide Body / Cargo Slings			Rated Capacities In Pounds
Sling Width	Stock #	Eye Length	Eye Width	Min. Length	Basket Hitch
6"	9CA106	12"	1-1/2"	3'	18500
6"	9CA206	12"	1-1/2"	3'	35000
8"	9CA108	12"	2"	4'	24000
8"	9CA208	14"	2"	4'	44000
12"	9CA112	14"	2"	5'	36000
12"	9CA212	20"	3"	5'	66000
16"	9CA116	18"	3"	6'	44000
16"	9CA216	24"	4"	6'	80000
20"	9CA120	24"	3-1/2"	8'	51500
20"	9CA220	24"	5"	8'	91500
24"	9CA124	36"	4"	10'	56400
24"	9CA224	36"	6"	10'	97500



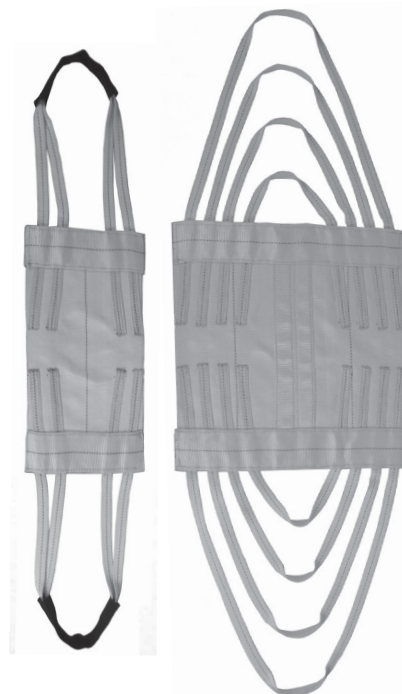
WARNING: Do not exceed rated capacities.

Attached Eye Slings

A cost effective solution for applications requiring a wider sling. These slings provide lateral support but have less capacity than wide body/cargo slings. Configurations of eyes allows for smaller hoist hooks normally used with light capacity lifts. Eyes are typically Cordura wrapped for longer life.

Specifications		Attached Eye Slings			Rated Capacities In Pounds
Sling Width	Stock #	Eye Length	Eye Width	Min. Length	Basket Hitch
6"	9CAA1-06	9"	1"	3'	6000
8"	9CAA1-08	9"	1"	3'	6000
10"	9CAA1-10	12"	1"	4'	6000
12"	9CAA1-12	16"	1"	4'	6000
16"	9CAA1-16	18"	2"	5'	10000
20"	9CAA1-20	20"	2"	5'	10000
24"	9CAA1-24	24"	2"	6'	10000

WARNING: Do not exceed rated capacities.



WISCOLIFT

Working Safe is Working Smart.
W6396 Specialty Drive
Greenville, WI 54942
WiscoLift.com




CUSTOM
DESIGNS
AVAILABLE!

Call: 800.242.3477
Greenville: 920.757.8832
Milwaukee: 262.253.2288
Fax: 920.757.8858
E-mail: CSR@WiscoLift.com

Polyester Round Slings

Polyester round slings are used in all styles of sling hitches. Double wall cover protects load-bearing fiber from damage, cover abrasion will not reduce capacity. Round slings are color coded by capacity. Polyester round slings are lightweight and pliable and conform to the shape of the load to grip securely.

Rated Capacities in Lbs Per Type of Hitch

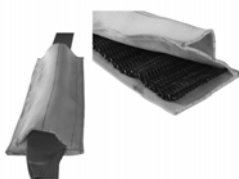
Part Number	Color			
		Vertical	Choker	90° Basket
PNR3-X	Purple	3,000	2,400	6,000
PNR4-X	Black	4,500	3,600	9,000
PNR6-X	Green	6,000	4,800	12,000
PNR9-X	Yellow	9,000	7,200	18,000
PNR12-X	Grey	12,000	9,600	24,000
PNR14-X	Red	14,000	11,200	28,000
PNR17-X	Brown	17,000	13,600	34,000
PNR22-X	Blue	22,000	17,600	44,000
PNR26-X	Orange	26,000	20,800	52,000
PNR32-X	Orange	32,000	25,600	64,000
PNR40-X	Orange	40,000	32,000	80,000
PNR50-X	Orange	50,000	40,000	100,000
PNR60-X	Orange	60,000	48,000	120,000
PNR70-X	Black	70,000	56,000	140,000
PNR80-X	Black	80,000	64,000	160,000
PNR90R-X	Black	90,000	72,000	180,000
PNR100-X	Black	100,000	80,000	200,000



Sling Protectors

Metal Mesh

This durable metal mesh reinforced sling protector will protect your sling from wear.



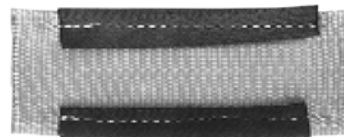
High Strength Composite

Protect your sling from wear with this crush resistant, high strength composite.



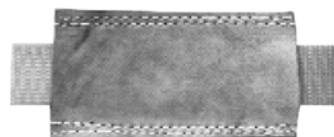
Buffers

Fixed Type Wear Pads



Sleeves

Sliding Type Wear Pads



WISCOLIFT

Working Safe is Working Smart.
 W6396 Specialty Drive
 Greenville, WI 54942
WiscoLift.com

Call: 800.242.3477
 Greenville: 920.757.8832
 Milwaukee: 262.253.2288
 Fax: 920.757.8858
 E-mail: CSR@WiscoLift.com

Maximum Work Load of Various Chain Sling Configurations

Design Factor		1-Leg Slings		2-Leg Slings			3-Leg & 4-Leg Slings		
4:1									
		Chain Size		Rated Capacity in Pounds					
Ni 5.50	7/32"	2700	4700	3800	2700	7000	5700	4000	
Ni 70	9/32"	4300	7400	6100	4300	11200	9100	6400	
Ni 80	5/16"	5700	9900	8100	5700	14800	12100	8500	
Ni 100	3/8"	8800	15200	12400	8800	22900	18700	13200	
Ni 130	1/2"	15000	26000	21200	15000	39000	31800	22500	
Ni 160	5/8"	22600	39100	32000	22600	58700	47900	33900	
Ni 200	3/4"	35300	61100	49900	35300	91700	74900	53000	
Ni 220	7/8"	42700	74000	60400	42700	110900	90600	64000	
Ni 260	1"	59700	103400	84400	59700	155100	126600	89550	
Ni 320	1-1/4"	90400	156600	127800	90400	234900	191800	135600	

WARNING: Do not exceed rated capacities.

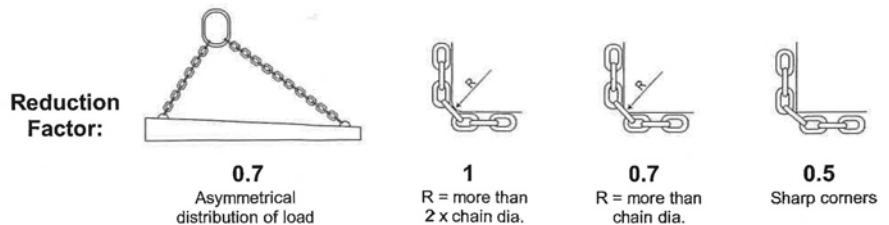
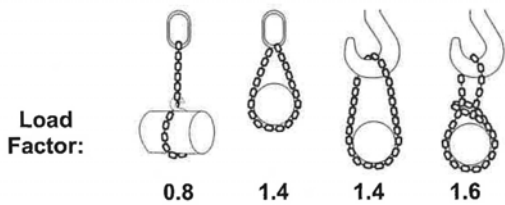
Proof Testing

All of our new and repaired alloy chain slings are inspected, tagged, proof tested and documented.

Our Quality Inspector checks each sling before it is brought back to your facility.



Reduction Factors

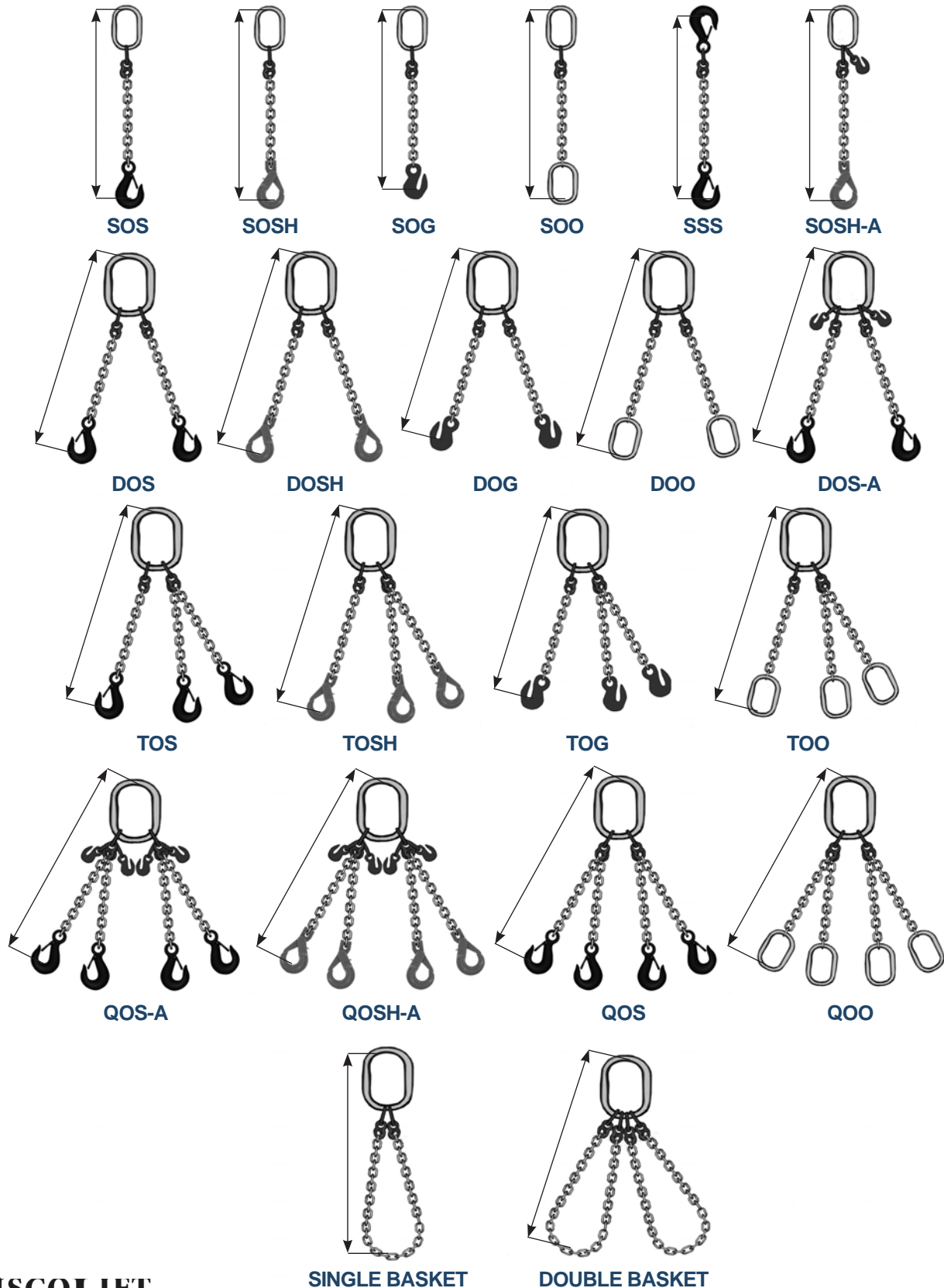


WISCOLIFT

Working Safe is Working Smart.
 W6396 Specialty Drive
 Greenville, WI 54942
WiscoLift.com

Call: 800.242.3477
 Greenville: 920.757.8832
 Milwaukee: 262.253.2288
 Fax: 920.757.8858
 E-mail: CSR@WiscoLift.com

Shown below are just some of the many types of chain slings available. Should you require any chain sling assemblies other than these, contact your WiscoLift Sales Representative for custom sling designs.



WISCOLIFT

Working Safe is Working Smart.
 W6396 Specialty Drive
 Greenville, WI 54942
WiscoLift.com

Call: 800.242.3477
 Greenville: 920.757.8832
 Milwaukee: 262.253.2288
 Fax: 920.757.8858
 E-mail: CSR@WiscoLift.com

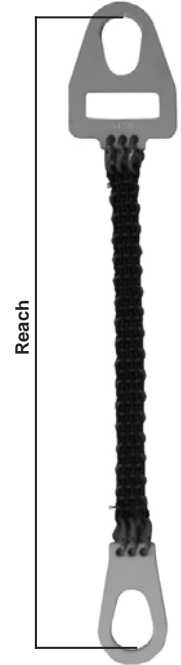
Alloy Chain Mesh

Excellent for handling hot or abrasive loads and loads which could cut into a web sling. Chain mesh slings grip loads firmly helping to maintain balanced loads and can withstand temperatures of up to 400° degrees F.

- Alloy steel for overhead lifting applications.
- Fittings machined to exacting tolerances.

Specifications

Chain Size	Chain Parts	Capacity Vertical	Capacity Choker 90°	Capacity Basket
7/32"	3	5000	5000	10000
	4	6700	6700	13400
	5	8400	8400	16800
	6	10800	10800	21600
9/32"	3	8400	8400	17600
	4	11200	11200	22400
	5	14000	14000	28000
	6	16800	16800	33600
3/8"	4	22700	22700	45400



SLING FEATURES

Chain Mesh Slings are made with Grade 100 alloy chain and alloy steel end fittings. The most common hardware used is the triangle and choker configuration. We can custom-make your chain mesh sling with alternate end fittings upon your request.

Following are some of the features of the chain mesh slings:

- Excellent for hot and abrasive loads.
- Proof-tested and certified.
- Permanently stamped with capacity and serial number.
- Chain mesh molds to the load for greater balance.
- End fittings accommodate most crane hooks.
- High quality Grade 100 chain and components.

All of our alloy chain slings are designed for long life under punishing conditions, but they will eventually wear out after extended use. The key is knowing when to replace them, and that is why it's very important to inspect your slings on a regular basis.



WISCOLIFT

Working Safe is Working Smart.
W6396 Specialty Drive
Greenville, WI 54942
WiscoLift.com

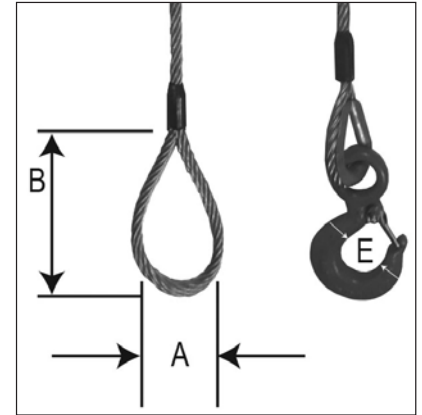
CUSTOM
DESIGNS
AVAILABLE!

Call: 800.242.3477
Greenville: 920.757.8832
Milwaukee: 262.253.2288
Fax: 920.757.8858
E-mail: CSR@WiscoLift.com

Single Part Mechanically Spliced Slings

Slings are fabricated with 6x19 class wire rope with six strands and an independent wire rope core (IWRC).

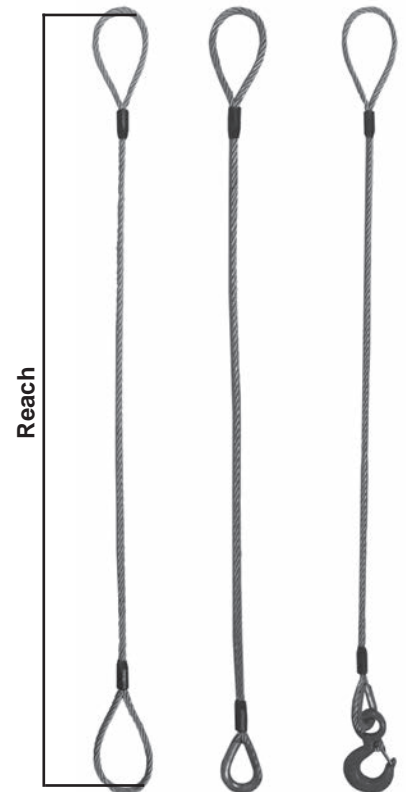
Rated Capacity*-Tons									
Rope Dia. Inch	Vert. Hitch	Choker Hitch	Basket Hitch			Approx. Eye Dim. Inches		Hook Dim. Inches	
			Vert.	60°	45°	30°	A	B	E
1/4"	.65	.48	1.3	.97	.79	.56	2"	4"	15/16"
3/8"	1.4	1.1	2.9	2.2	1.8	1.2	3"	6"	1-1/16"
1/2"	2.5	2.5	2.5	3.8	3.1	2.2	4"	8"	1-1/2"
5/8"	3.9	2.9	7.8	5.9	4.8	3.4	5"	10"	1-7/8"
3/4"	5.6	4.1	11	8.4	6.9	4.9	6"	12"	1-7/8"
7/8"	7.6	5.6	7.6	11	9.3	6.6	7"	14"	2-1/4"
1"	9.8	7.2	20	15	12	8.5	8"	16"	2-1/2"
1-1/8"	12	9.1	24	18	15	10	9"	18"	2-1/2"
1-1/4"	15	11	30	22	18	13	10"	20"	3-3/8"
1-3/8"	18	13	36	27	22	15	11"	22"	3-3/8"
1-1/2"	21	16	42	32	26	18	12"	24"	3-3/8"
1-5/8"	24	18	49	37	30	21	13"	26"	4"
1-3/4"	28	21	57	43	35	25	14"	28"	4-1/4"
2"	37	28	73	55	45	32	16"	32"	4-3/4"



*Rated capacities for unprotected eyes apply only when attachment is made over an object narrower than the natural width of the eye, and apply for basket hitches only when the D/d ratio is 20 or greater; where D=Diameter of curvature around which the body of the sling is bent, and d=nominal diameter of the rope.

*Working Load Limit in tons of 2000 lbs.

WARNING: Do not exceed rated capacities.



WISCOLIFT

Working Safe is Working Smart.
W6396 Specialty Drive
Greenville, WI 54942
WiscoLift.com

CUSTOM
SLING DESIGNS
AVAILABLE!

Call: 800.242.3477
Greenville: 920.757.8832
Milwaukee: 262.253.2288
Fax: 920.757.8858
E-mail: CSR@WiscoLift.com

Multi-Part Mechanically Spliced Slings

Multi-part slings have two, three, or four legs connected with thimble reinforced eyes to an alloy steel oblong master link. Hooks, thimble eyes, regular eyes, etc. are available for the opposite end of each leg. Please specify when ordering. All eyes are fabricated with mechanically spliced Molly Flemish eyes.

Rope Size in Inches	Two Leg Bridle Sling Rated Capacity*			Three Leg Bridle Sling Rated Capacity*			Four Leg Bridle Sling Rated Capacity*		
	60°	45°	30°	60°	45°	30°	60°	45°	30°
1/4"	1.1	0.91	0.65	1.7	1.4	0.97	2.2	1.8	1.3
3/8"	2.5	2.0	1.4	3.7	3.0	2.2	5.0	4.1	2.9
1/2"	4.4	3.6	2.5	6.6	5.4	3.8	8.8	7.1	5.1
5/8"	6.8	5.5	3.9	10	8.3	5.9	14	11	7.8
3/4"	9.7	7.9	5.6	15	12	8.4	19	16	11
7/8"	13	11	7.6	20	16	11	26	21	15
1"	17	14	9.8	26	21	15	34	28	20
1-1/8"	21	17	12	31	26	18	42	34	24
1-1/4"	26	21	15	38	31	22	51	42	30
1-3/8"	31	25	18	46	38	27	62	50	36
1-1/2"	37	30	21	55	45	32	73	60	42

* Tons of 2,000#. Rated capacities for 2,3 & 4 leg bridle slings are based on equal leg slings with the sling angle being the greater angle measured between any two of the sling legs. Safety first – inspect slings before each use for broken wire, kinks, crushing, etc.



WISCOLIFT

Working Safe is Working Smart.
W6396 Specialty Drive
Greenville, WI 54942
WiscoLift.com

CUSTOM
DESIGNS
AVAILABLE!

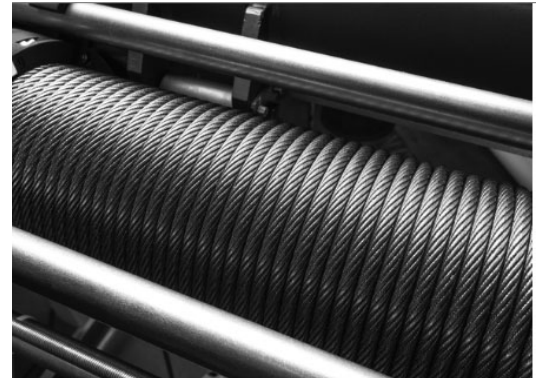
Call: 800.242.3477
Greenville: 920.757.8832
Milwaukee: 262.253.2288
Fax: 920.757.8858
E-mail: CSR@WiscoLift.com

Hoist Cables

During lifting operations it is possible for your wire rope to become damaged. Excessive loads, improperly grooved sheaves or drums, and lack of proper field lubrication are just a few of the reasons.

WiscoLift will replace your hoist's wire rope according to the hoist manufacturer's recommendations so that you can resume lifting operations.

Note: After replacing your hoist cable, break it in by lifting lighter loads and running through 20-25 lifting and lowering cycles. This will ensure that the wire rope is seated properly.



Winch Cables

We fabricate winch cables with Steel Core using IWRC XIP Grade cable with right regular lay 6 x 19 construction, and a standard finish. Our Fiber Core winch cable is fabricated with a standard finish. Winch cables are available with the option of no hook, Eye Hook and Latch, Swivel Hook and Latch and Safety Swivel Hook (see below).

Available cable diameters are 3/8", 7/16", 1/2", 5/8" and 3/4." Standard lengths are 50' to 300'. All custom lengths are available upon request.



Swivel Hook and Latch

Safety Swivel Locking Hook

Eye Hook and Latch



Winch Cable Extension

WISCOLIFT

Working Safe is Working Smart.
 W6396 Specialty Drive
 Greenville, WI 54942
WiscoLift.com

CUSTOM
 LENGTHS
 AVAILABLE!

Call: 800.242.3477
 Greenville: 920.757.8832
 Milwaukee: 262.253.2288
 Fax: 920.757.8858
 E-mail: CSR@WiscoLift.com

Following is a sample of the many fittings and materials available.



Assembly Bank

Be guaranteed never to be without critical assemblies. Take advantage of WiscoLift's **Assembly Bank**. At the Assembly Bank, quantities of your most critical assemblies are stored complete, labeled and packaged, ready for immediate shipment wherever you need them.

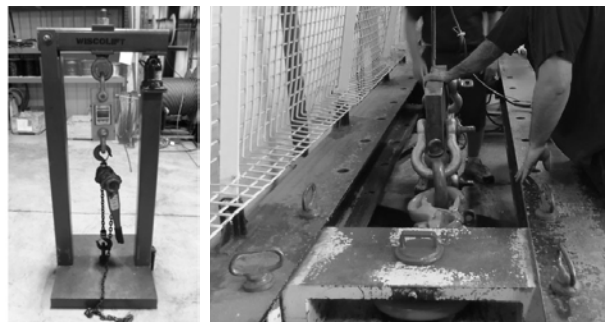
For more information, call your Sales Representative at 800-242-3477.



Equipment

WiscoLift has 4 swaging machines for attaching a wide variety of fittings as well as sewing machines and testing equipment:

PROMEC 438 55 ton High Speed Press
 PROMEC Q6000 175 ton High Speed Press
 ESCO Mark 100 350 ton Press
 ESCO Mark 150 500 ton Press
 Markham High Speed Automatic Cable Cutter
 High Speed Automatic Web Cutter
 Dematron, Singer and Consew Class 7 Sewing Machines
 200,000# Horizontal Test Bed
 12,000# Vertical Tester



All of our test equipment is calibrated annually and is fully ASTM-4 compliant.

WISCOLIFT

Working Safe is Working Smart.
 W6396 Specialty Drive
 Greenville, WI 54942
WiscoLift.com

Call: 800.242.3477
 Greenville: 920.757.8832
 Milwaukee: 262.253.2288
 Fax: 920.757.8858
 E-mail: CSR@WiscoLift.com

WiscoLift also designs and fabricates custom cable assemblies used for Construction/Architectural projects, Sailboat Rigging Lines and Garage Door Cable Replacements.

Cable Railing Systems



Sailboat Rigging Lines



Garage Door Cable

Garage door cables are sold in packages of 25 pairs and available in the following configurations:

Plain Loop 1 End, Plain 1 End

Extension Spring Cables, 3/32" 7 x 7, 10' - 14' and 1/8" 7 x 7, 10' - 14'

Plain Loop or Loop with Thimble 1 End and Stop at 1 End

Torsion Spring Cables, 3/32" 7 x 7, 8' - 9'6"

Torsion Spring Cables, 1/8" 7 x 7, 8' - 13'

Torsion Spring Cables, 1/8" 7 x 19, 8'6" - 13'6"

Torsion Spring Cables, 5/32" 7 x 19, 15'9" - 20'

Loop with Thimble 1 End, 2 Stops at 1 End

Commercial Torsion Spring Cables, 1/8" 7 x 19, 8'6" - 22'4"

Commercial Torsion Spring Cables, 5/32" 7 x 19, 13'9" - 36'9"

Commercial Torsion Spring Cables, 3/16" 7 x 19, 15'9" - 36'9"



Shortened to show entire cable



WISCOLIFT

Working Safe is Working Smart.

W6396 Specialty Drive

Greenville, WI 54942

WiscoLift.com



Call: 800.242.3477

Greenville: 920.757.8832

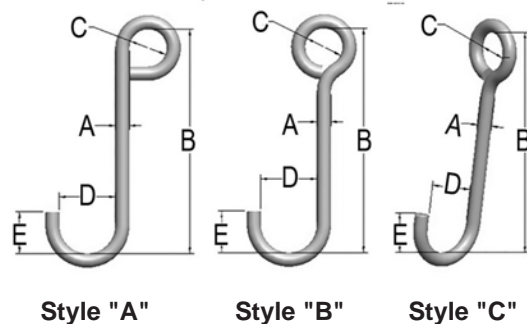
Milwaukee: 262.253.2288

Fax: 920.757.8858

E-mail: CSR@WiscoLift.com

Standard J-Hooks

Diameter of Material "A"	"B" Length	"C" Eye Diameter	"D" Bowl Width	"E" Tip Length	Capacity in Pounds
1/4"	5"	1"	1-1/4"	7/8"	100
5/16"	5"	1"	1-1/4"	7/8"	250
3/8"	6"	1"	1-1/2"	1-1/8"	365
1/2"	8"	1"	2"	1-1/2"	650
5/8"	9"	1"	2-1/2"	1-7/8"	1000
3/4"	10"	1"	3"	2-1/4"	1450
7/8"	12"	1"	3-1/2"	2-5/8"	1900
1"	14"	1-1/4"	4"	3"	2600
1-1/8"	15"	1/1/4"	4-1/2"	3-3/8"	2250
1-1/4"	16"	1-1/2"	5"	3-3/4"	2750
1-3/8"	17"	1-1/2"	5-1/2"	4-1/8"	3000
1-1/2"	18"	2"	6"	4-1/2"	3500
1-3/4"	20"	2-1/2"	7"	5-1/4"	4000
2"	24"	3"	8"	6"	5000



NOTE: Inquire about our custom J-Hooks by selecting the Quote tab on WiscoLift.com.

Custom Paint Line Hooks

- Manufactured to exceed all ASME B30.20 and OSHA regulations
- Maximum use temperature is 400° F
- Round, square and hex stock available
- Proof load certificates shipped with every custom design
- Made in USA



Custom Lifting Hooks

- Manufactured to exceed all ASME B30.20 and OSHA regulations
- Maximum use temperature is 400° F
- Round, square and hex stock available
- Custom powder coating available
- Proof load certificates shipped with every custom design
- Made in USA



NOTE: Special alloys are available.

WISCOLIFT

Working Safe is Working Smart.
W6396 Specialty Drive
Greenville, WI 54942
WiscoLift.com

CUSTOM
DESIGNS
AVAILABLE!

Call: 800.242.3477
Greenville: 920.757.8832
Milwaukee: 262.253.2288
Fax: 920.757.8858
E-mail: CSR@WiscoLift.com

Machinery Eye Bolts

Working load limits for eye bolts are based on a straight vertical lift in a gradually increasing manner. Angular lifts will significantly lower working load limits and should be avoided whenever possible. If an angular lift is required, properly seat the shoulder of the bolt. Loads should always be applied to eye bolts in the plane of the eye, not at an angle to this plane. Angular lift must never be more a 45° pull. Metric and stainless steel eye bolts are available.

Number	Shank Dia. & Thread	Shank Length	Eye I.D.	Eye O.D.	Capacity Straight Pull	Capacity 45° Angle Pull
21	1/4-20	1"	3/4"	1-1/4"	500	125
22	5/16-18	1-1/8"	7/8"	1-1/2"	900	225
23	3/8-16	1-1/4"	1"	1-21/32"	1400	350
24	7/16-14	1-3/8"	1-3/32"	1-27/32"	2000	500
25	1/2-13	1-1/2"	1-3/16"	2-1/16"	2600	650
26	9/16-12	1-5/8"	1-9/32"	2-9/32"	3200	750
27	5/8-11	1-3/4"	1-3/8"	2-1/2"	4000	1000
28	3/4-10	2"	1-1/2"	2-13/16"	6000	1500
29	7/8-9	2-1/4"	1-11/16"	3-1/4"	7000	1750
30	1-8	2-1/2"	1-13/16"	3-9/16"	9000	2250
31	1-1/8-7	2-3/4"	2"	4"	12000	2500
32	1-1/4-7	3"	2-3/16"	4-7/16"	15000	3750
34	1-1/2-6	3-1/2"	2-1/2"	5-3/16"	21000	4900



Shoulder Type Eye Bolts

Shackles

Size, working load limit and trademark are permanently marked on all shackles. All shackles and pins are heat treated. Loads are based on a design factor of 6 to 1. When tested all shackles are pulled at a uniform rate of speed in direct tension. Shackles meet performance requirements of federal specifications RR-C-271 D Type IVA.

Working Load Limit In tons	Nominal Size	Inside Width at Pin	Inside Width at Bowl	Inside Length	Pin or Bolt Dia.
1/3	3/16"	3/8"	5/8"	7/8"	1/4"
1/2	1/4"	15/32"	25/32"	1-5/32"	5/16"
3/4	5/16"	17/32"	7/8"	1-1/4"	3/8"
1	3/8"	21/32"	1-1/32"	1-7/16"	7/16"
1-1/2	7/16"	3/4"	1-5/32"	1-11/16"	1/2"
2	1/2"	7/8"	1-1/4"	2"	5/8"
3-1/4	5/8"	1-1/16"	1-11/16"	2-17/32"	3/4"
4-3/4	3/4"	1-7/32"	2"	3"	7/8"
6-1/2	7/8"	1-13/32"	2-9/32"	3-9/32"	1"
8-1/2	1"	1-11/16"	2-11/16"	3-3/4"	1-1/8"
9-1/2	1-1/8"	1-27/32"	2-15/16"	4-1/4"	1-1/4"
12	1-1/4"	2"	3-9/32"	4-17/32"	1-3/8"
13.5	1-3/8"	2-1/4"	3-5/8"	5-1/4"	1-1/2"
17	1-1/2"	2-3/8"	3-29/32"	5-3/4"	1-5/8"
25	1-3/4"	2-29/32"	4-31/32"	7"	2"
35	2"	3-9/32"	5-7/16"	7-3/4"	2-1/4"
42.5	2-1/4"	3-3/4"	6-5/16"	8-3/4"	2-9/16"
55	2-1/2"	4-1/8"	7-3/32"	10-1/4"	2-3/4"
**85	3"	5"	7-15/32"	12-15/16"	3-1/4"

**Bolt Type Shackle Only.



Bolt Type Anchor Shackle



Screw Pin Anchor Shackle

WARNING:
Do not exceed rated capacities.

WISCOLIFT

Working Safe is Working Smart.
W6396 Specialty Drive
Greenville, WI 54942
WiscoLift.com

Call: 800.242.3477
Greenville: 920.757.8832
Milwaukee: 262.253.2288
Fax: 920.757.8858
E-mail: CSR@WiscoLift.com

Working action - 360° swivel, 180° pivot. Material AISI 4140 aircraft quality. Finish: Black Oxide (other finishes available). Design factor 5:1. Magnetic particle inspected. Certified heat treatment. Serialized and proof tested to 200% of working load limit. Metric sizes available.

AISI 4140 Rated Capacities

Rated Load in Lbs.	Part No.	Thread Size	Shank Length	Bale ID Radius	Bale Inside Length	Install Torque Ft/Lb
600	46100	1/4-20	.54"	.43"	1.27"	6
800	46102	5/16-18	.29"	.43"	1.27"	7
1000	46106	3/8-16	.54"	.43"	1.27"	12
2000	46000	7/16-14	.78"	.88"	2.37"	22
2500	46008	1/2-13	.78"	.88"	2.31"	28
2500	46007	9/16-12	.78"	.88"	2.25"	30
4000	46002	5/8-11	.78"	.88"	2.18"	60
7000	46204	3/4-10	1.04"	1.40"	3.06"	100
8000	46202	7/8-9	1.04"	1.40"	2.93"	160
10000	46210	1-8	1.29"	1.40"	2.81"	230
10000	46216	1-1/8-7	2.29"	1.40"	2.69"	230
15000	46802	1-1/4-7	1.89"	1.75"	4.12"	470
20000	46702	1-3/8-6	2.50"	2.00"	5.50"	540
24000	46404	1-1/2-6	2.70"	2.25"	6.41"	800
24000	46408	1-3/4-5	3.20"	2.25"	6.16"	800
30000	46400	2-4-1/2	3.20"	2.25"	5.91"	800
32500	46364	2-1/4-4-1/2	3.20"	2.25"	6.41"	800
50000	47006	2-1/2-4	4.00"	3.00"	8.03"	2100
55000	46366	2-3/4-4	4.00"	3.00"	7.75"	2100
75000	47200	3-4	5.00"	3.75"	8.48"	4300
100000	47402	3-1/2-4	7.00"	4.00"	9.28"	5100
250000	47602	6-4	9.00"	6.00"	14.00"	9900



AISI 4140 Hoist Ring



Stainless Steel Hoist Ring

NOTE: Longer shanks, longer bales and replacement bolt kits available.

WARNING: Do not exceed rated capacities.



Side Pull Hoist Ring



Lifting Ring



Forged Side Pull Lifting Ring



Speed Base Hoist Ring



Forged Swivel Hoist Ring



Forged Hoist Ring



"Mold Handler" Ball Bearing Swivel Hoist Ring



Ultra Lifting Ring Ball Bearing Swivel Hoist Ring

WISCOLIFT

Working Safe is Working Smart.
W6396 Specialty Drive
Greenville, WI 54942
WiscoLift.com

METRIC SIZES
AVAILABLE AT
WISCOLIFT.COM

Call: 800.242.3477
Greenville: 920.757.8832
Milwaukee: 262.253.2288
Fax: 920.757.8858
E-mail: CSR@WiscoLift.com

Wiscolift is a Distributor for many Material Handling products as well as a Manufacturer for customized, engineered lifting products. Below is a detailed list of products that we sell:

Air Balancers	Plate Clamps
Air Hoists	Plate Hooks
Alloy Chain Slings	Radio Remote Controls
Articulating Jib Cranes	Recovery Straps
Bridge Cranes	Round Slings
Cable Assemblies	S-Hooks
Cargo Control Products	Shackles
Chain Hoists	Sheet Lifters
Chain Mesh Slings	Spreader Beams
Collision Avoidance Systems	Synthetic Rope Assemblies
Conveyor Systems	Swivel Hoist Rings
Crane Controls & Drives	Tilters
Crane Electrification	Tool Balancers
Crane Warning Devices	Top Running Cranes
Drum Handling Equipment	Tractor Drives
Electric Hoists	Trolleys
Eye Bolts	Turntables
Fall Arrest Equipment	Underrunning Cranes
Gantry Cranes	Vacuum Lifts
Hoist Cables	Variable Frequency Drives
J-Hooks	Web Slings
Jib Cranes	Winch Cables
Lever Hoists	Winches
Lift Magnets	Wire Rope
Lift Tables	Wire Rope Hoists
Lifting Beams	Wire Rope Slings
Manipulators	Work Positioners
Paint Line Hooks	Workstation Cranes
Pendant Stations	



For more information, call us at 800-242-3477.

MANUFACTURERS

Acco-Wright	CM	Handling Systems	Merrill	Spanco
Actek	Conductix-Wampfler	Harrington	Morse	Street Crane
Am. Drill Bushing	Cooper Tools	Industrial Magnetics	Peerless	Syclone Attco
Anver	Coffing	Ingersoll Rand	Pewag	Terrier
Bal-Trol	Crosby	Itnac	Power Electronics	Thern
Big Joe	Demag	Jergens	Presto Lift	Van Beest
Budgit	Duct-O-Wire	JD Neuhaus	R&M	Vestil
Bushman	EconoLift	Kinedyne	Renfroe	Walker Magnetics
Caldwell	Electromotive	La Clede	Roll-A-Way	Wallace
Campbell	Gardner-Denver	Lift Products	Safety Clamp	Yale
Chester	Gemtor	M&W	Saturn	
Chicago Hardware	Gorbel	Magna	Schlumpf	
Cleveland Tramrail	Gunnebo	Magnetek	Shaw-Box	

WISCOLIFT

Working Safe is Working Smart.

W6396 Specialty Drive, Greenville, WI 54942
800-242-3477 · WiscoLift.com