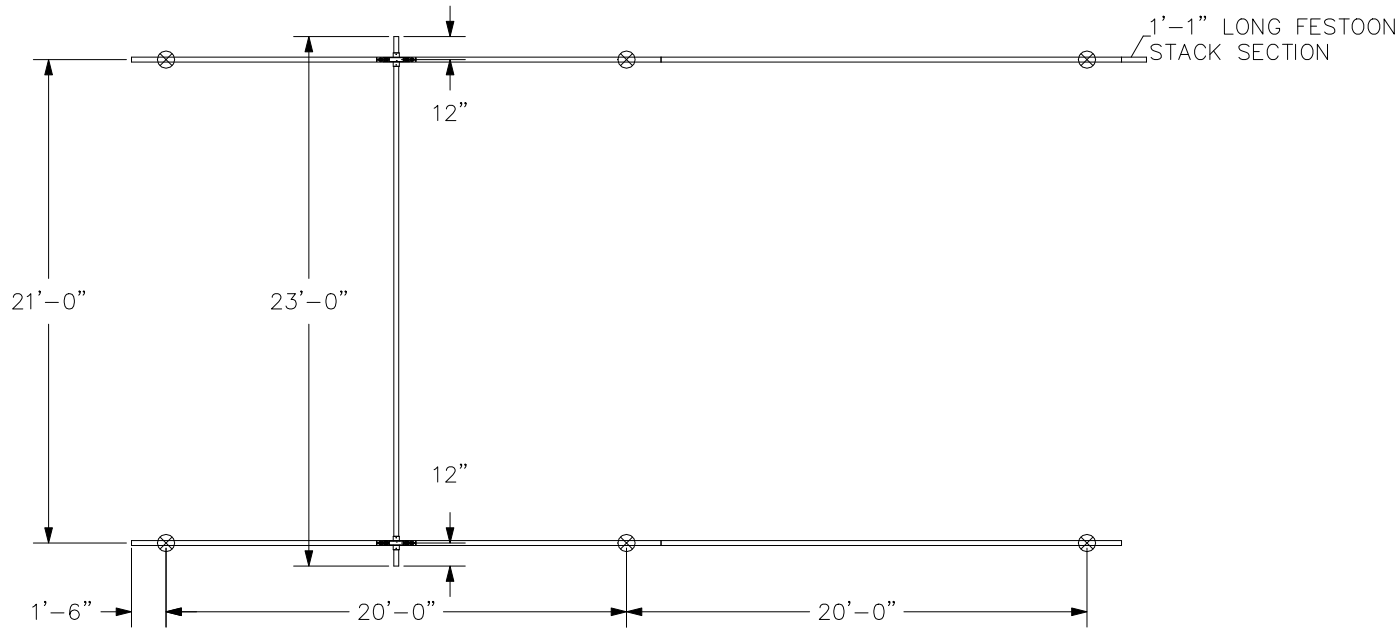
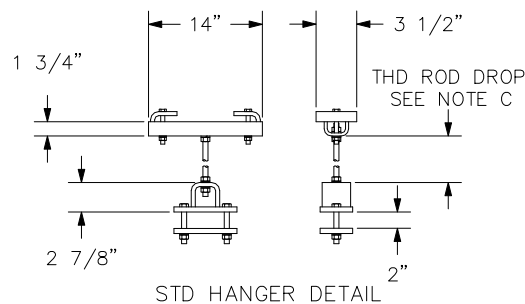
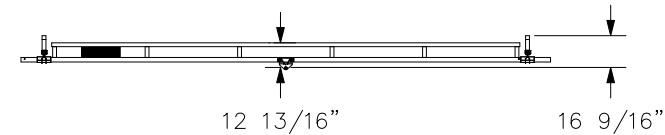
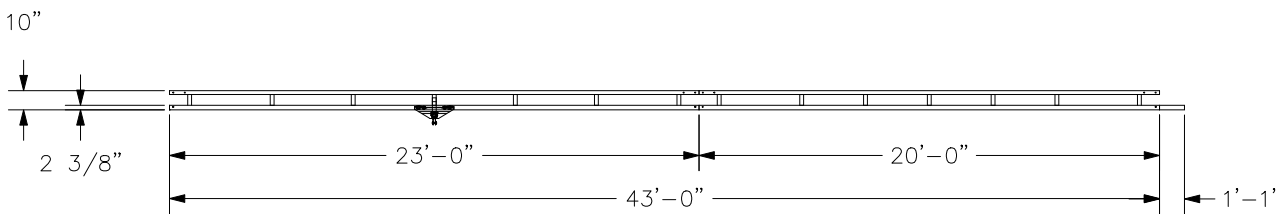


CONFIDENTIAL

SWAY BRACING IS REQ'D,  
REFER TO MANUAL.  
HANGER DETAIL SHOWN IS OUR STANDARD  
DESIGN AND MAY NOT REPRESENT THE ACTUAL  
HANGER DESIGN UTILIZED ON THIS SYSTEM.



NOTE C: MINIMUM THD ROD DROP MUST MAINTAIN  
3" OF CLEARANCE BETWEEN BRIDGE  
AND LOWEST OBSTRUCTION.  
BRIDGE TROLLEY TRAVEL IS 20'-7".  
ENDTRUCK TRAVEL IS 40'-9 7/16".



HANGERS ARE ON 20' CENTERS MAXIMUM  
WITH A 48" CANTILEVER ON EACH END MAXIMUM.  
HANGERS MUST BE WITHIN 48" OF SPLICE JOINT  
⊗ = HANGER POINT  
DO NOT SCALE FROM DRAWING.  
DIMENSIONS ARE STEEL TO STEEL AND MAY VARY.  
HANGER POSITION TOLERANCE = ±3 1/2"

CREATED BY: WISCOLIFT INC

CRANE INFORMATION		<b>GORBEL</b> 600 FISHERS RUN P.O. BOX 593 FISHERS, NY 14453-0593	
CAPACITY: 500LBS/BR			
BRIDGE OAL: 23'-0"		GLCS500-23-43	
BRIDGE SERIES: 500		GENERAL ARRANGEMENT	
RUNWAY OAL: 43'-0"		TOLERANCE: ±1/8	BY: bilcon
RUNWAY SERIES: 500		QUANTITY: 1	DATE: AUG 13, 2015
I.D. #: DEMO500C.4A		LINE #: 4	P/N: DEMO500C.4A