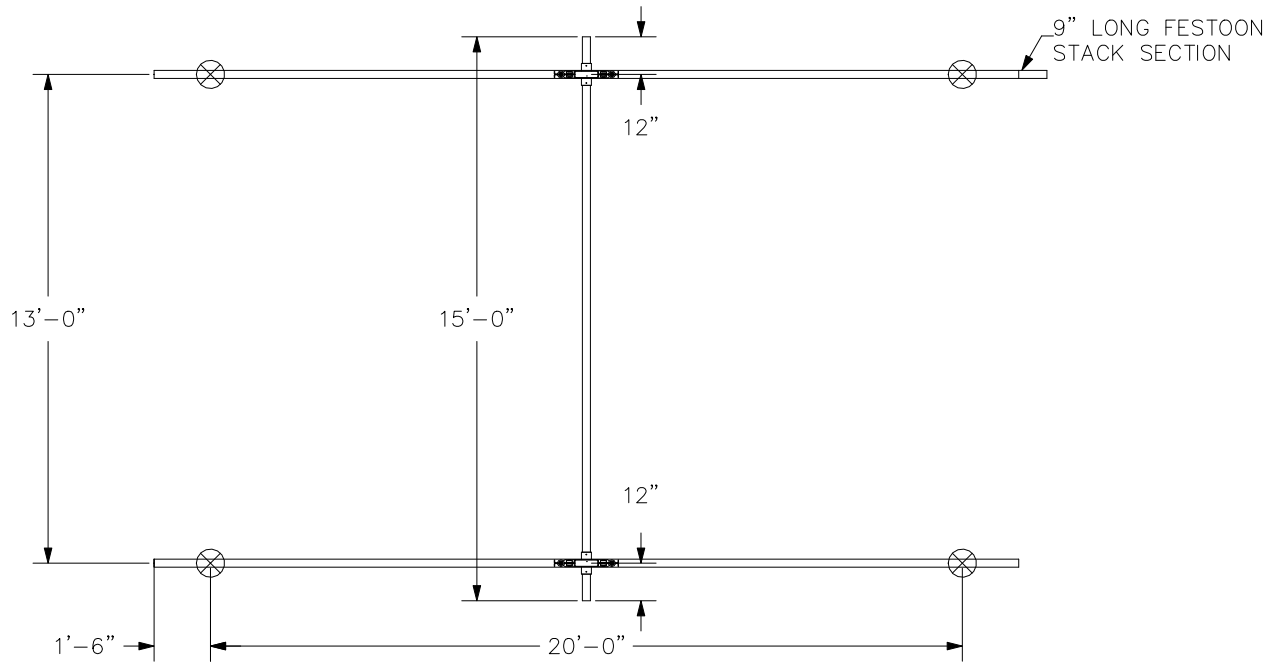


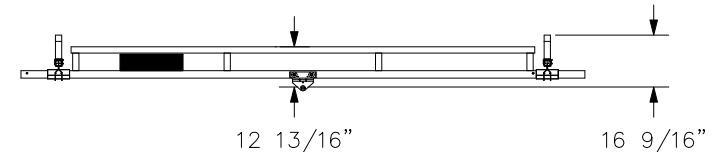
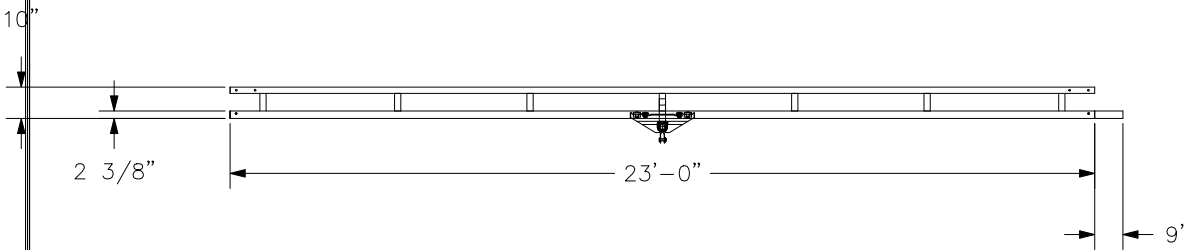
CONFIDENTIAL

SWAY BRACING IS REQ'D,
REFER TO MANUAL.
HANGER DETAIL SHOWN IS OUR STANDARD
DESIGN AND MAY NOT REPRESENT THE ACTUAL
HANGER DESIGN UTILIZED ON THIS SYSTEM.

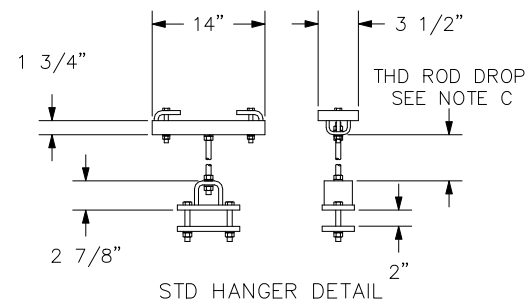


NOTE C: MINIMUM THD ROD DROP MUST MAINTAIN
3" OF CLEARANCE BETWEEN BRIDGE
AND LOWEST OBSTRUCTION.

BRIDGE TROLLEY TRAVEL IS 12'-7".
ENDTRUCK TRAVEL IS 20'-9 7/16".



CREATED BY: WISCOLIFT INC



HANGERS ARE ON 20' CENTERS MAXIMUM
WITH A 48" CANTILEVER ON EACH END MAXIMUM.
HANGERS MUST BE WITHIN 48" OF SPLICE JOINT
⊗ = HANGER POINT
DO NOT SCALE FROM DRAWING.
DIMENSIONS ARE STEEL TO STEEL AND MAY VARY.
HANGER POSITION TOLERANCE = ±3 1/2"

| CRANE INFORMATION | | GORBEL 600 FISHERS RUN P.O. BOX 593 FISHERS, NY 14453-0593 | |
|---------------------|--|---|--|
| CAPACITY: 500LBS/BR | | | |
| BRIDGE OAL: 15'-0" | | GENERAL ARRANGEMENT | |
| BRIDGE SERIES: 500 | | BY: bilcon | |
| RUNWAY OAL: 23'-0" | | DATE: AUG 13, 2015 | |
| RUNWAY SERIES: 500 | | LINE #: 1 | |
| TOLERANCE: ±1/8 | | P/N: DEMO500C.1A | |
| QUANTITY: 1 | | | |
| I.D. #: DEMO500C.1A | | | |