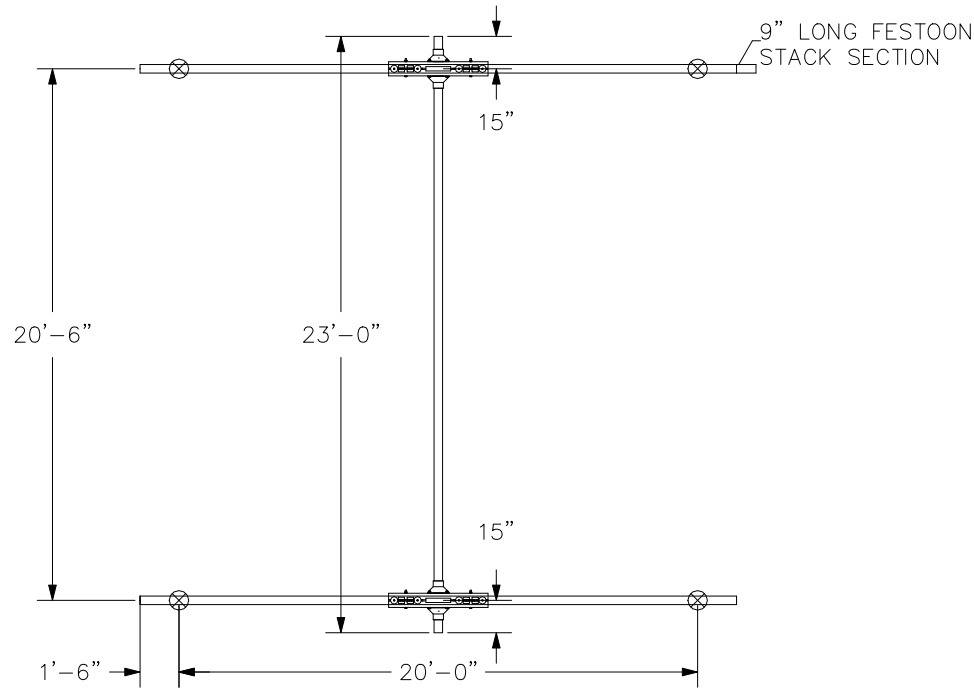


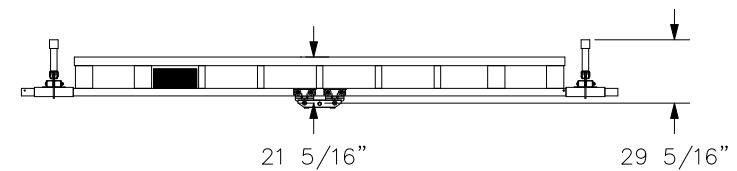
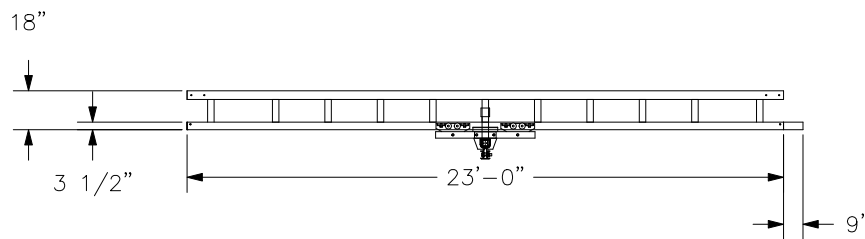
CONFIDENTIAL

SWAY BRACING IS REQ'D,
REFER TO MANUAL.
HANGER DETAIL SHOWN IS OUR STANDARD
DESIGN AND MAY NOT REPRESENT THE ACTUAL
HANGER DESIGN UTILIZED ON THIS SYSTEM.



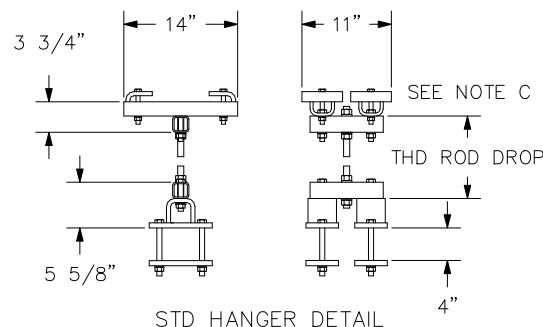
NOTE C: MINIMUM THD ROD DROP MUST MAINTAIN
3" OF CLEARANCE BETWEEN BRIDGE
AND LOWEST OBSTRUCTION.

BRIDGE TROLLEY TRAVEL IS 18'-6 1/16".
ENDTRUCK TRAVEL IS 18'-7 1/2".



CREATED BY: WISCOLIFT INC

HANGERS ARE ON 20' CENTERS MAXIMUM
WITH A 48" CANTILEVER ON EACH END MAXIMUM.
HANGERS MUST BE WITHIN 48" OF SPLICE JOINT
⊗ = HANGER POINT
DO NOT SCALE FROM DRAWING.
DIMENSIONS ARE STEEL TO STEEL AND MAY VARY.
HANGER POSITION TOLERANCE = ±3 1/2"



CRANE INFORMATION		GORBEL 600 FISHERS RUN P.O. BOX 593 FISHERS, NY 14453-0593
CAPACITY: 4000LBS/BR		
BRIDGE OAL: 23'-0"		GLCS4000-23-23
BRIDGE SERIES: 4000		GENERAL ARRANGEMENT
RUNWAY OAL: 23'-0"		TOLERANCE: ±1/8
RUNWAY SERIES: 4000		BY: bilcon
QUANTITY: 1	LINE #: 3	DATE: AUG 12, 2015
I.D. #: DEMO4000C.3A		P/N: DEMO4000C.3A