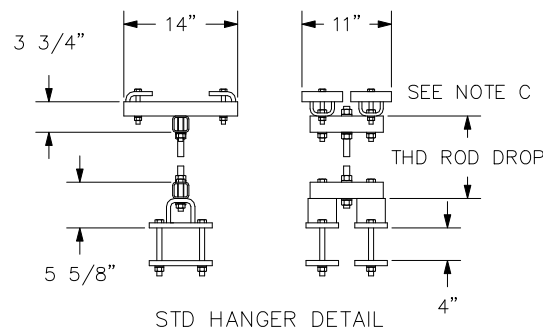
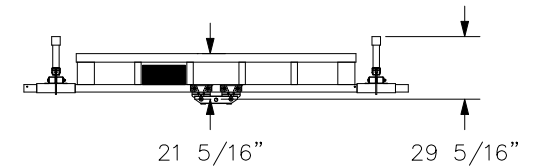
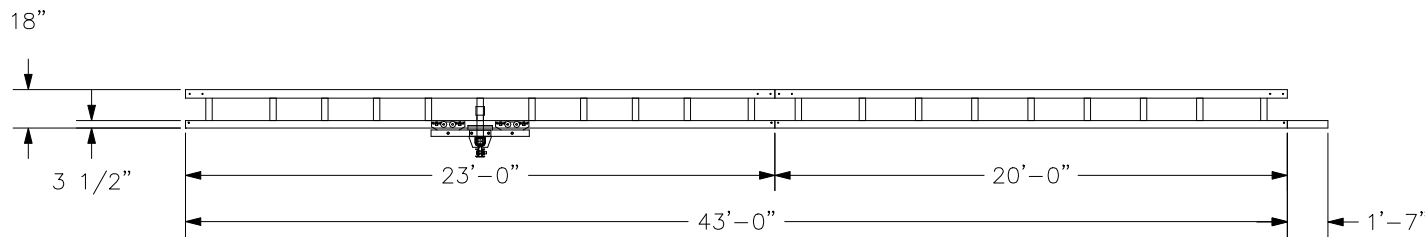
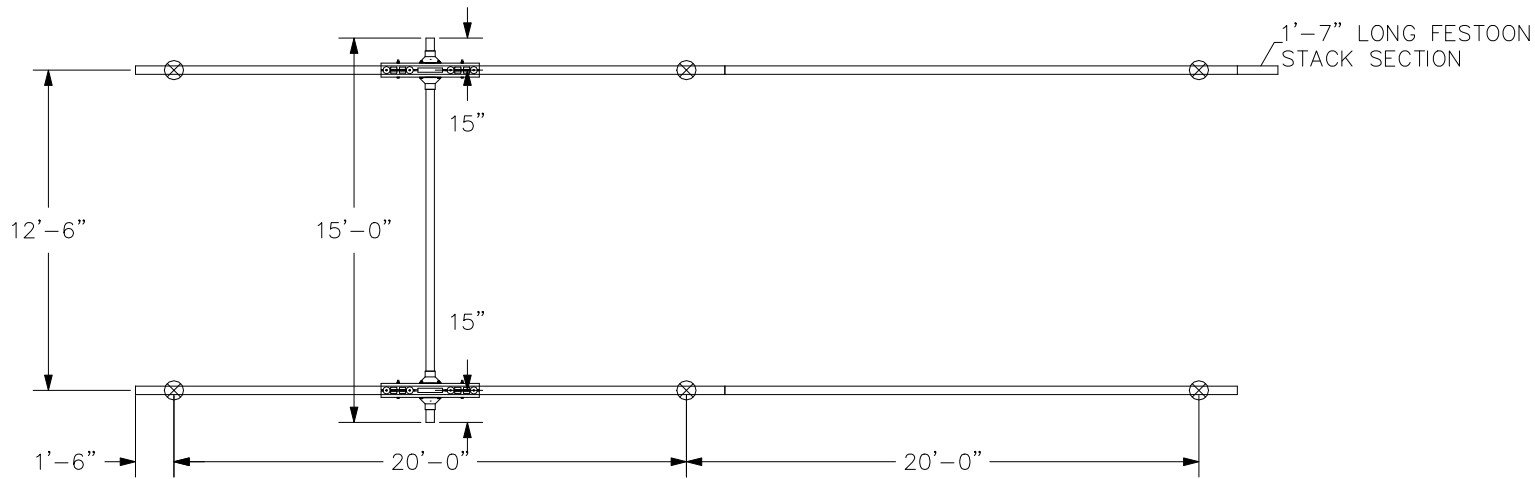


CONFIDENTIAL

SWAY BRACING IS REQ'D,  
REFER TO MANUAL.  
HANGER DETAIL SHOWN IS OUR STANDARD  
DESIGN AND MAY NOT REPRESENT THE ACTUAL  
HANGER DESIGN UTILIZED ON THIS SYSTEM.

NOTE C: MINIMUM THD ROD DROP MUST MAINTAIN  
3" OF CLEARANCE BETWEEN BRIDGE  
AND LOWEST OBSTRUCTION.

BRIDGE TROLLEY TRAVEL IS 10'-6 1/16".  
ENDTRUCK TRAVEL IS 38'-7 1/2".



HANGERS ARE ON 20' CENTERS MAXIMUM  
WITH A 48" CANTILEVER ON EACH END MAXIMUM.  
HANGERS MUST BE WITHIN 48" OF SPLICE JOINT  
⊗ = HANGER POINT  
DO NOT SCALE FROM DRAWING.  
DIMENSIONS ARE STEEL TO STEEL AND MAY VARY.  
HANGER POSITION TOLERANCE = ±3 1/2"

CREATED BY: WISCOLIFT INC

CRANE INFORMATION		<b>GORBEL</b> 600 FISHERS RUN P.O. BOX 593 FISHERS, NY 14453-0593	
CAPACITY: 4000LBS/BR BRIDGE OAL: 15'-0" BRIDGE SERIES: 4000 RUNWAY OAL: 43'-0" RUNWAY SERIES: 4000			
TOLERANCE: ±1/8		GLCS4000-15-43	
QUANTITY: 1		GENERAL ARRANGEMENT	
I.D. #: DEMO4000C.2A		BY: bilcon	DATE: AUG 12, 2015
		LINE #: 2	P/N: DEMO4000C.2A