



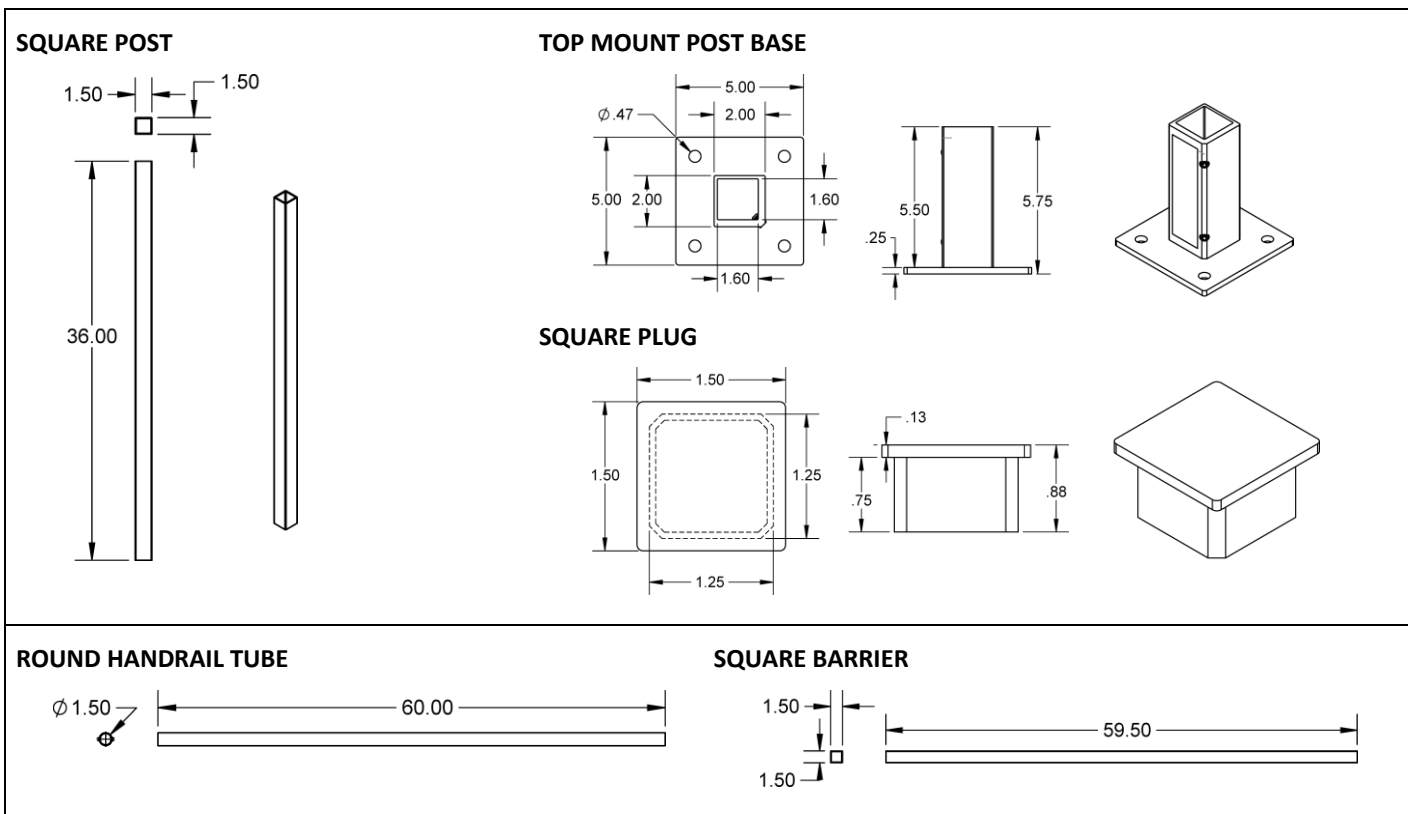
RAILWAY™ Modular Handrail System

Technical Specifications

MODEL	KIT 1 (RAILWAY POST KIT)	KIT 2 (RAILWAY POST WITH 5' HANDRAIL AND BARRIER KIT)	KIT 3 (RAILWAY 5' STAIR HANDRAIL KIT)
6000 SERIES ALUMINUM	✓	✓	✓
AVAILABLE SURFACE OPTIONS	Architectural Finish or Black Powder Coat	Architectural Finish or Black Powder Coat	Architectural Finish or Black Powder Coat
PRODUCT DIMENSIONS (L x W x H)*	5" x 5" x 36-3/8"	64" x 5" x 36-3/8"	64" x 5" x 36-3/8"
WEIGHT*	3.2 lbs.	12.17 lbs.	9.3 lbs.
RATED LOAD (DO NOT EXCEED)	200 lbs.	200 lbs.	200 lbs.
FIELD TRIMMABLE HANDRAILS	N/A	60" STANDARD	60" STANDARD
CONCRETE ANCHOR (NOT INCLUDED) DIAMETER	7/16"	7/16"	7/16"
WARRANTY	Lifetime Limited**	Lifetime Limited**	Lifetime Limited**
COUNTRY OF ORIGIN	USA	USA	USA

* Weights and dimensions are approximate and subject to change.
 ** Warranty excludes powder-coated finish.

COMPONENTS VIEW:



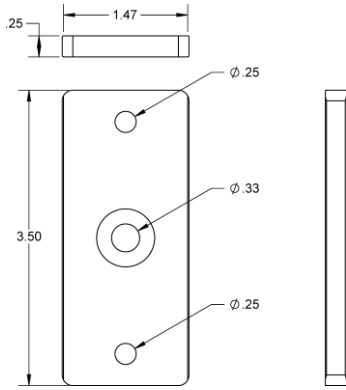
Manufactured in the USA

Patented components.
 LIFETIME WARRANTY. Please register at www.ezaccess.com/product-registration.
 © EZ-ACCESS®, a division of Homecare Products, Inc. All rights reserved.
 All text and images contained in this document are proprietary and may not be shared, modified, distributed, reproduced, or reused without the express written permission of EZ-ACCESS

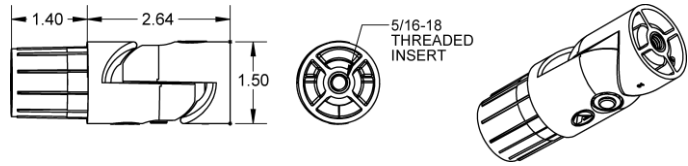


21235 REV 08-14-2024

HANDRAIL ATTACHMENT PLATE

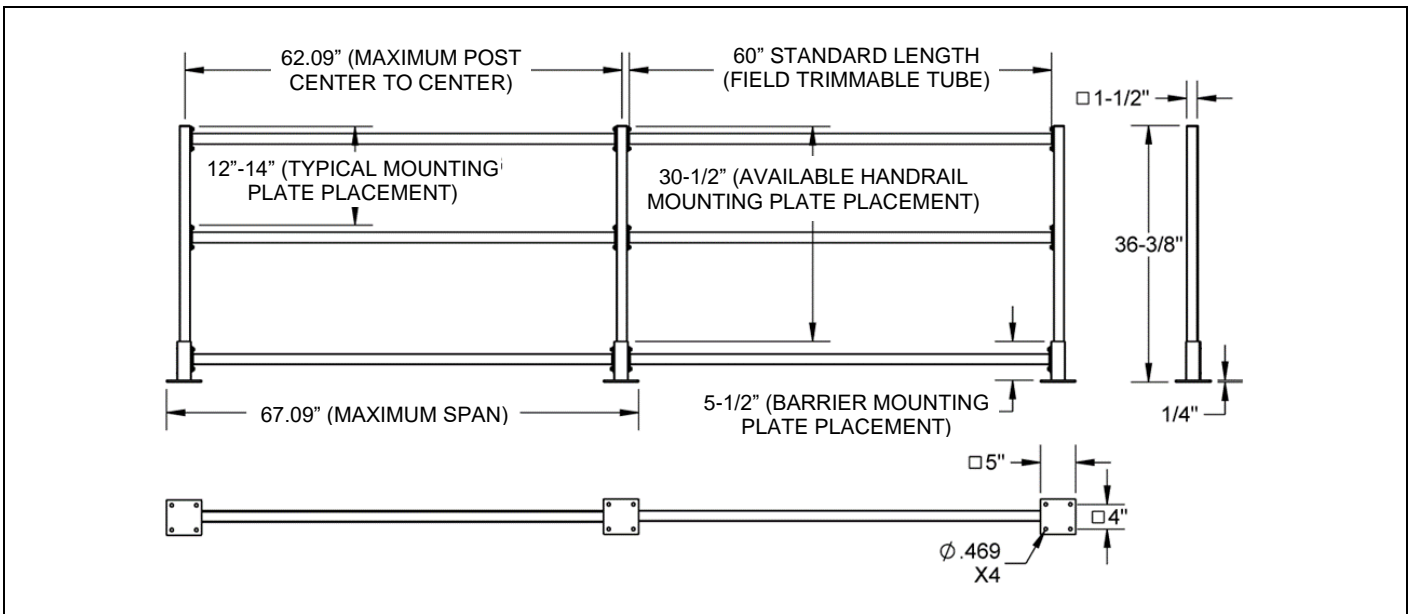


ADJUSTABLE CLOSURE ELBOW



TYPICAL DIMENSIONAL DATA:

STRAIGHT RUN



STAIR RUN

