

ArcticSpring 100C

Massive Hot Water Boiler & Direct Chill Combination

An 8 ltr 2.8 kw
Hot Water Boiler

23cm Dispensing
Height To Fill
Bottles



The Direct
Chiller Delivers
30ltrs Per Hour Of
Water Less Than
12°C!

18 ltrs per hour
Capacity, Instantly
Delivers 20 cups of
tea (5 ltrs) at
a constant 90°C+

- Massive hot water capacity - 5 ltrs instant draw off with 18 ltrs per hour above 90°C hot water
- 2.8 kw boiling element
- Excellent chilled capacity of 30 ltrs per hour below 12°C
- 8 screws to open boiler lid for easy access for de scaling and servicing
- Save electricity & be green. Eco light sensor turns the boiler off when the office lights go out. This saves about 25% or £40pa in electricity & reduces carbon
- Avoid scale in a hard water area by connecting the hot water inlet to a Brita type scale REMOVAL filter & a cheaper carbon filter to the chiller inlet
- In a soft water area you can connect the hot & the chilled inlets to a single carbon filter
- Our floodguard inlet solenoid avoids large scale flooding
- Impressive 23cm dispensing height

AA
FIRST
WATER COOLERS
& BOILERS

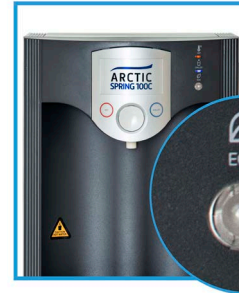
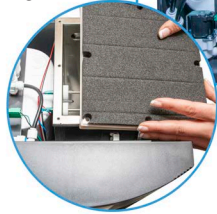
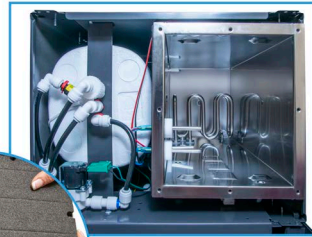


refreshingly different

ArcticSpring 100C

Massive Hot Water Boiler & Direct Chill Combination

8Ltr Hot Tank With 2.8kw Heating Element & Easy Access For Descaling & Inspection



Eco Light Sensor Turns The Boiler Off Overnight To Save Approx 25% or £40 pa in electricity!



In a hard water area you have the option to connect a Scale Removal Filter to the Boiler inlet and a Carbon Filter to the Chiller Inlet. This significantly extends the life of the more expensive Scale Removal Filter



Select Hot Or Cold, Then Hold The Dispensing Button Down



In a soft water area you only need a Carbon Filter to connect to the Boiler and the Chiller inlet

Accessories For The ArcticSpring 100C

Cooler/Boiler Installation Rail for Soft Water area with a Carbon Filter. Includes compression fitting, Water block, Copper pressure reducing valve and non-return valve



Overflow Kits; 10 ltr Overflow Kit to extend the Drip Tray capacity (factory installed) We also supply a 3 ltr Overflow Kit for self install



Installation Rail for hard water areas. This includes a carbon block candle for the chilled water inlet & a scale removal filter for the hot water inlet

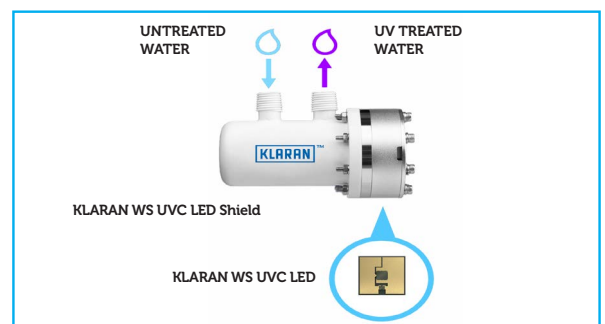


Mains Drainage - Connect The Drip Tray To Mains Drainage. Can Be Supplied With A Pump, To Pump The Water Over 50m & A Rise Of 5m



KLARAN WS UVC LED SHIELD For Direct Chill/ Ice Bank Coolers

- The KLARAN WS UVC LED Shield represents a major technological break-through by providing 24/7 protection against bacterial contamination
- The revolutionary KLARAN WS UVC LED Shield destroys 99%+ of Cryptosporidium, Giardia, E-Coli, Pseudomonas, Legionella and other Bacteria
- Simple to Install and Maintenance Free, which is in stark contrast to conventional UV light systems, the KLARAN WS UVC LED Shield adds real value to your Water Cooler offer
- KLARAN WS UVC LED Shield can be supplied factory installed into an AA Water Cooler, or can be provided as a unit for self-installation



Description	Hourly OutPut		Temperature		Dimensions H X W X D (mm)	Weight (Kg)
	Chilled	Hot	Chilled	Hot		
POU Floor Standing	30 ltrs	18 ltrs	Below 12°C	Above 90°C	1135 X 340 X 340	31

AA FIRST
WATER COOLERS
& BOILERS

www.aafirst.co.uk