

QUICK START GUIDE

STEPS THAT WILL MAKE YOUR LIFE EASIER AND THE END PRODUCT BETTER WHILE USING TRIMINATOR DRY KIEF KIT.

PREPARATION



TRIM TO DRY ICE RATIOS

IDEAL RATIOS FOR OPTIMAL PERFORMANCE INCLUDE:

TRIM **70%**
DRY ICE **30%**

TRIM **80%**
DRY ICE **20%**

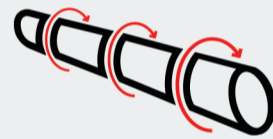
NOTE: DRY ICE MUST BE IN PELLET FORM OR FINELY CRUSHED. LARGE CHUNKS OF DRY ICE WILL DAMAGE THE SCREEN.



REMOVE TRIM DRUM AND SHEAR BAND



REMOVE SHEAR BAND FROM FINGERS ON BOTH SIDES OF MACHINE.



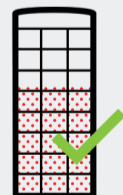
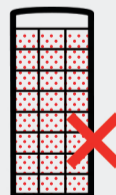
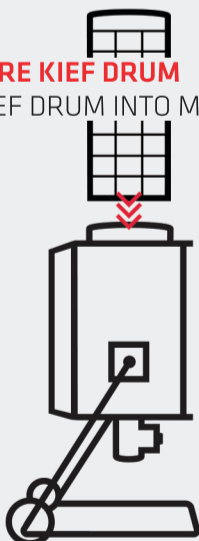
WRAP UPPER SHEAR BAND HOLDER TIGHT TO RATCHET BAR AND SECURE WITH VELCRO.

NOTE: FAILURE TO KEEP SHEAR BAND HOLDER AWAY FROM DRUM COULD RESULT IN DAMAGE TO THE KIEF DRUM.



PREPARE KIEF DRUM

PUT KIEF DRUM INTO MACHINE AND SECURE



FILL DRUM 1/2 UP TO 3/4 OF THE WAY FULL

NOTE: OVERFILLING WILL LOWER QUALITY AND PROCESSING SPEED.

WAIT.....



ALLOW PRODUCT TO GET REALLY COLD

APROX. 5-10 MINUTES

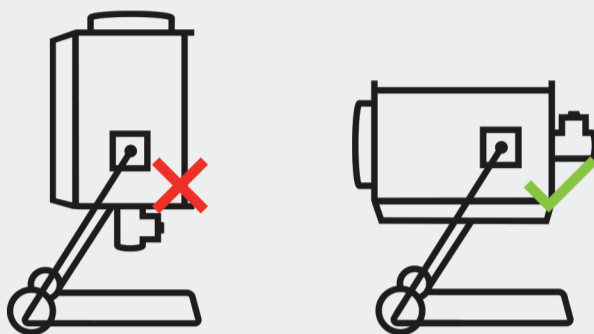
QUICK START GUIDE

OPERATION



ROTATE DRUM

PUT MACHINE IN RUNNING POSITION



DRUM MUST BE IN HORIZONTAL POSITION THROUGHOUT THE ENTIRE PROCESS.



RUN TIME

RUN FOR UP TO 10 MINUTES

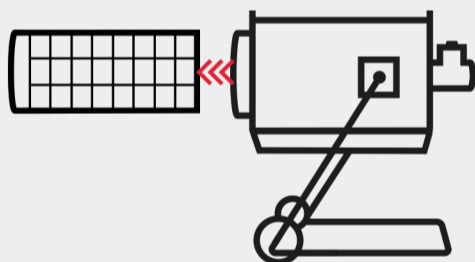
0 ————— **MINUTES** ————— 10

NOTE: IF YOU WISH TO SEPARATE THE DIFFERENT KIEF QUALITIES, RUN 5 MINUTES, REMOVE FIRST BATCH OF KIEF, THEN RUN AGAIN FOR 5 MINUTES.

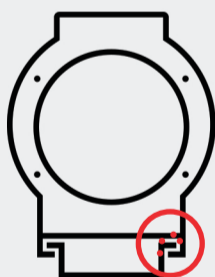


KIEF COLLECTION

WHEN FINISHED, KEEP MACHINE IN HORIZONTAL POSITION

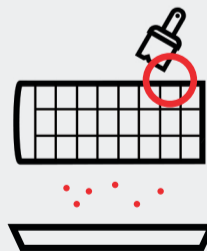


CAREFULLY REMOVE DRUM AND SET ASIDE GENTLY.



***BEFORE REMOVING KIEF TRAY, BRUSH EXCESS KIEF OFF THE INSIDE LEDGES WHICH HOLD TRAY IN THE MACHINE ***

REMOVE KIEF CATCHMENT TRAY AND BRUSH OFF REMAINING KIEF ON DRUM INTO THE TRAY.



NOTE: CHANGING DRUM/MACHINE POSITION WILL RESULT IN KIEF LOSS.

CLEANING



HAND CLEAN WITH SOAP AND HOT WATER WHEN YOU NOTICE OUTPUT DIMINISHING

QUESTIONS

EMAIL US
INFO@THETRIMINATOR.COM

CALL US
530.265.4277