

4

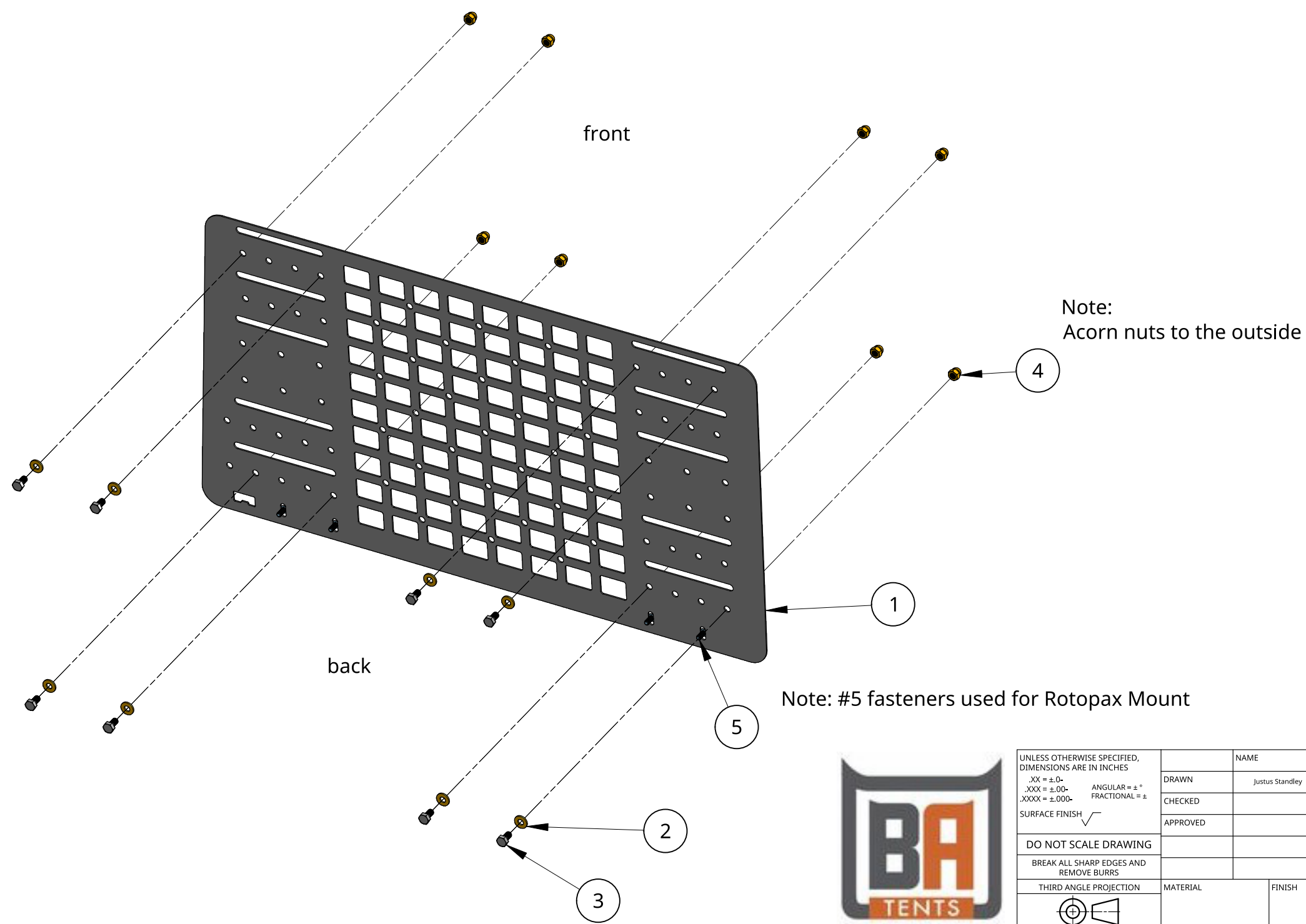
3

2

1

Item	Quantity	Name	Part number	Description
1	1	Molle Panel	1401.0408.01	14 gauge steel powder coat black
2	8	Nylon Washer	ABABA-.8NWSFN	M8 FLAT WASHER NYLON
3	8	Fastener	ABABA-.8C16HCSS	M8-1.25 x 15 18-8 Stainless Steel Hex Head Screw
4	8	Cap Nut	ABABA-.8CNCAS	M8-1.25 ACORN CAP NUT S/S
5	4	Fastener	92949A834	18-8 Stainless Steel Button Head Hex Drive Screw 1/4"-20 Thread Size, 9/16" Long

Revised 12-12-2023



Note:  
Acorn nuts to the outside

Note: #5 fasteners used for Rotopax Mount



UNLESS OTHERWISE SPECIFIED, DIMENSIONS ARE IN INCHES .XX = ±.0- .XXX = ±.00- .XXXX = ±.000-		NAME	DATE	
SURFACE FINISH ✓		DRAWN	08/02/2022	
DO NOT SCALE DRAWING		CHECKED		
BREAK ALL SHARP EDGES AND REMOVE BURRS		APPROVED		
THIRD ANGLE PROJECTION	MATERIAL	FINISH	TITLE <b>Bronco MOLLE Mounting plate Assembly</b>	
			SIZE <b>B</b>	DWG NO. <b>1401-0408</b>
			SCALE 1:6	REV. <b>V1</b>
			WEIGHT	SHEET 1 of 1

4

3

2

1

D

D

C

C

B

B

A

A