



BEYONDTECH FIBER Click™

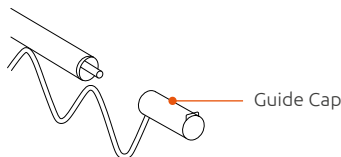
Fiber Optic Cleaner Pen / Size: 2.5mm (SC / ST / FC Fiber Connectors)

Features an easy pushing motion that engages the connector and initiates the cleaner. It is disposable with 800+ cleanings per unit. It has been made from anti static resin, and its cleaning microfibers are densely stranded and debris free. Its extendable tip reaches recessed connectors, and its cleaning system rotates 180° for a full sweep.

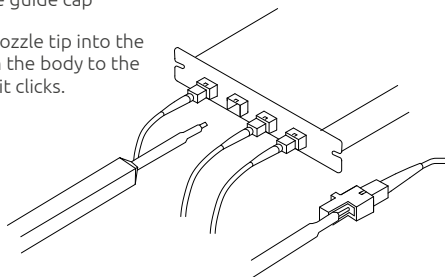
INSTRUCTIONS

1. CLEAN BULKHEAD APPLICATIONS

First remove the guide cap, then insert the nozzle tip into the adapter, and finally push it forward until it clicks, which means that the cleaning has been done. To clean tight spaces you can extend the nozzle forward with the slide button on the tool body.

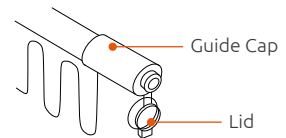


1. Remove the guide cap
2. Insert the nozzle tip into the adapter. Push the body to the adapter until it clicks.

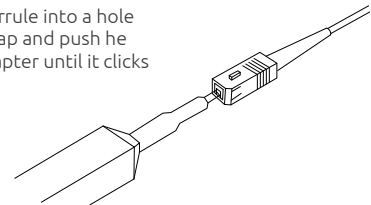


2. CLEAN CONNECTOR ENDFACES

First open the lid of the guide cap, and then insert the ferrule into a hole on the guide cap and push the body to the adapter until it clicks, which indicates that the cleaning process has been completed.



1. Open the lid of guide cap
2. Insert the ferrule into a hole on the guide cap and push the body of the adapter until it clicks



IMPORTANT: We have taken great care in designing and building a tool that is safe to use. However, improper usage or handling can still inflict injury to others. Please note the following warnings:



DO NOT RE-USE



DO NOT DISMANTLE



DO NOT USE IF EMPTY



NOT TOUCH/ PULL THE CLOTH



DO NOT EXPOSE TO HIGH HUMIDITY



DO NOT EXPOSE TO HIGH TEMPERATURE



DO NOT EXPOSE TO HIGH TEMPERATURE

BEYONDTECH FIBER Click™ SC/ST/FC is designed only to clean SC, ST and FC connectors. The cover on the guide cap should be closed at all times when the device is not in use.

APPLICATIONS: The Best applications for the BEYONDTECH FIBER Click™ SC/ST/FC are: Fiber network panels and assemblies, Outdoor FTTX applications, Cable assembly production facility, Testing laboratories Server, switches, routers and OADMS with LC interfaces.





BEYONDTECH FIBER Click™ LC/MU

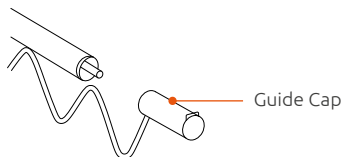
LC Fiber Optic Cleaner Pen / Size: 1.25mm(LC / SFP Connectors)

Features an easy pushing motion that engages the connector and initiates the cleaner. It is disposable with 800+ cleanings per unit. It has been made from anti static resin, and its cleaning microfibers are densely stranded and debris free. Its extendable tip reaches recessed connectors, and its cleaning system rotates 180 for a full sweep.

INSTRUCTIONS

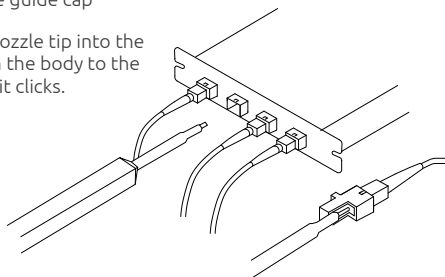
1. CLEAN BULKHEAD APPLICATIONS

First remove the guide cap, then insert the nozzle tip into the adapter, and finally push it forward until it clicks, which means that the cleaning has been done. To clean tight spaces you can extend the nozzle forward with the slide button on the tool body.



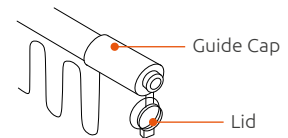
1. Remove the guide cap

2. Insert the nozzle tip into the adapter. Push the body to the adapter until it clicks.



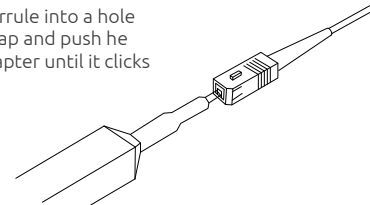
2. CLEAN CONNECTOR ENDFACES

First open the lid of the guide cap, and then insert the ferrule into a hole on the guide cap and push the body to the adapter until it clicks, which indicates that the cleaning process has been completed.



1. Open the lid of guide cap

2. Insert the ferrule into a hole on the guide cap and push the body of the adapter until it clicks



IMPORTANT: We have taken great care in designing and building a tool that is safe to use. However, improper usage or handling can still inflict injury to others. Please note the following warnings:



DO NOT RE-USE



DO NOT DISMANTLE



DO NOT USE IF EMPTY



NOT TOUCH/ PULL THE CLOTH



DO NOT EXPOSE TO HIGH HUMIDITY



DO NOT EXPOSE TO HIGH TEMPERATURE



DO NOT EXPOSE TO HIGH TEMPERATURE

BEYONDTECH FIBER Click™ LC/MU is designed only to clean LC connectors. The cover on the guide cap should be closed at all times when the device is not in use.

APPLICATIONS: The Best applications for the BEYONDTECH FIBER Click™ LC/MU are: Fiber network panels and assemblies, Outdoor FTTX applications, Cable assembly production facility, Testing laboratories Server, switches, routers and OADMS with LC interfaces.

