



Horizon

52"- 54" Type II 20oz. Contract Wallcovering

PHYSICAL PROPERTIES

TOTAL WEIGHT:

U.S. UNITS	METRIC UNITS
20.0 oz per linear yard	619 grams / linear meter
13.3 oz per square yard	451 grams / square meter

BACKING: Nonwoven

WIDTH: 52"- 54" (1.32m - 1.37m)

DESIGN: 38.1cm / Random/Reversible

1 YEAR WARRANTY AGAINST MANUFACTURING DEFECTS

*Use only adhesives and primers as recommended by the manufacturer.

All patterns stocked are in 30 linear yard bolts

Copyright © 2021 Questex, All Rights Reserved.
465 Devon Park Drive, Wayne, PA 19087 USA
www.wallquest.com/questex - MADE IN U.S.A.

TECHNICAL SPECIFICATIONS

FIRE HAZARD CLASSIFICATION RESULTS:

- TESTED IN ACCORDANCE WITH ASTM E-84 TUNNEL TEST
- CLASS "A" FIRE RATED
- FLAME SPREAD 25
- SMOKE DEVELOPED 20
- EN13501 (B-s1,d0)

This product is intended for use in buildings that are properly designed and maintained to avoid moisture infiltration, condensation and/or accumulation at wall cavities and wall surfaces, particularly in warm, humid climates.

FEDERAL SPECIFICATIONS:

Questex exceeds G.S.A Federal Specification CCC-W-408D for Type II materials using test procedures detailed in Federal Specifications CCC-T-191-B. This wallcovering passes The National Fire Protection Association NFPA286 Corner Burn Test.

ANTI-MICROBIAL FEATURES:

Vinyl wallcoverings contain bactericides and mildew inhibitors to discourage the growth of mold and mildew under normal conditions.

QUESTEX[®]
C O N T R A C T

Horizon
52"- 54" Type II 20oz. Contract Wallcovering



HORIZON



Nougat

TS85605



Evaporation

TS85608



Offshore

TS85602



Tihitian

TS85604

HORIZON



Bengal Bay

TS85612



Trellis

52" - 54" Type II 20oz. Contract Wallcovering

PHYSICAL PROPERTIES

TOTAL WEIGHT:

U.S. UNITS	METRIC UNITS
20.0 oz per linear yard	619 grams / linear meter
13.3 oz per square yard	451 grams / square meter

BACKING: Nonwoven

WIDTH: 52" - 54" (1.32m - 1.37m)

DESIGN: 50.8cm / Reverse Hang/Straight

1 YEAR WARRANTY AGAINST MANUFACTURING DEFECTS

*Use only adhesives and primers as recommended by the manufacturer.

All patterns stocked are in 30 linear yard bolts

Copyright © 2021 Questex, All Rights Reserved.
465 Devon Park Drive, Wayne, PA 19087 USA
www.wallquest.com/questex - MADE IN U.S.A.

TECHNICAL SPECIFICATIONS

FIRE HAZARD CLASSIFICATION RESULTS:

- TESTED IN ACCORDANCE WITH ASTM E-84 TUNNEL TEST
- CLASS "A" FIRE RATED
- FLAME SPREAD 25
- SMOKE DEVELOPED 20
- EN13501 (B-s1,d0)

This product is intended for use in buildings that are properly designed and maintained to avoid moisture infiltration, condensation and/or accumulation at wall cavities and wall surfaces, particularly in warm, humid climates.

FEDERAL SPECIFICATIONS:

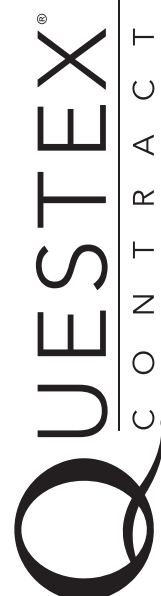
Questex exceeds G.S.A Federal Specification CCC-W-408D for Type II materials using test procedures detailed in Federal Specifications CCC-T-191-B. This wallcovering passes The National Fire Protection Association NFPA286 Corner Burn Test.

ANTI-MICROBIAL FEATURES:

Vinyl wallcoverings contain bactericides and mildew inhibitors to discourage the growth of mold and mildew under normal conditions.

Trellis

52" - 54" Type II 20oz. Contract Wallcovering





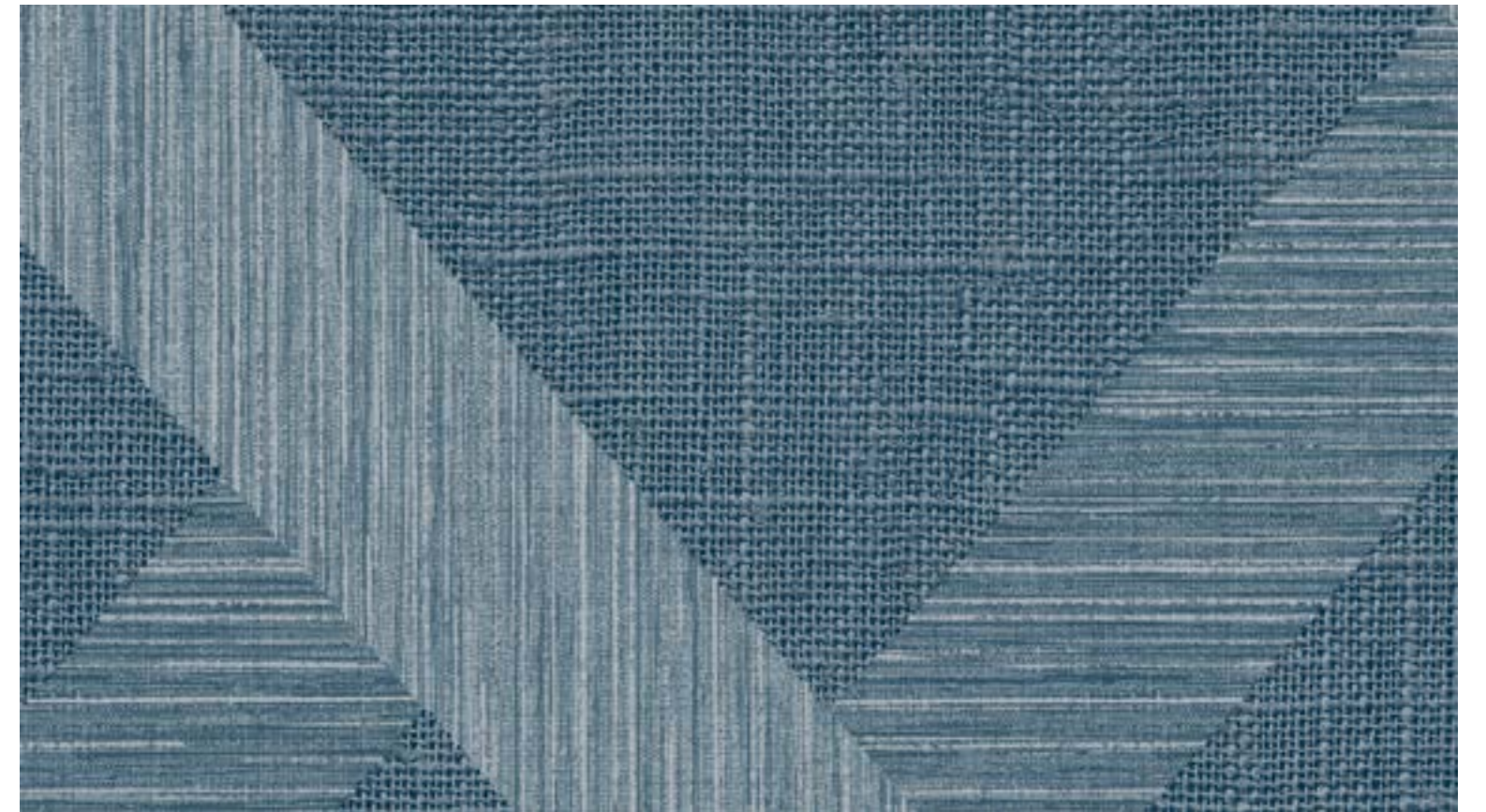
Abaca

TS85805



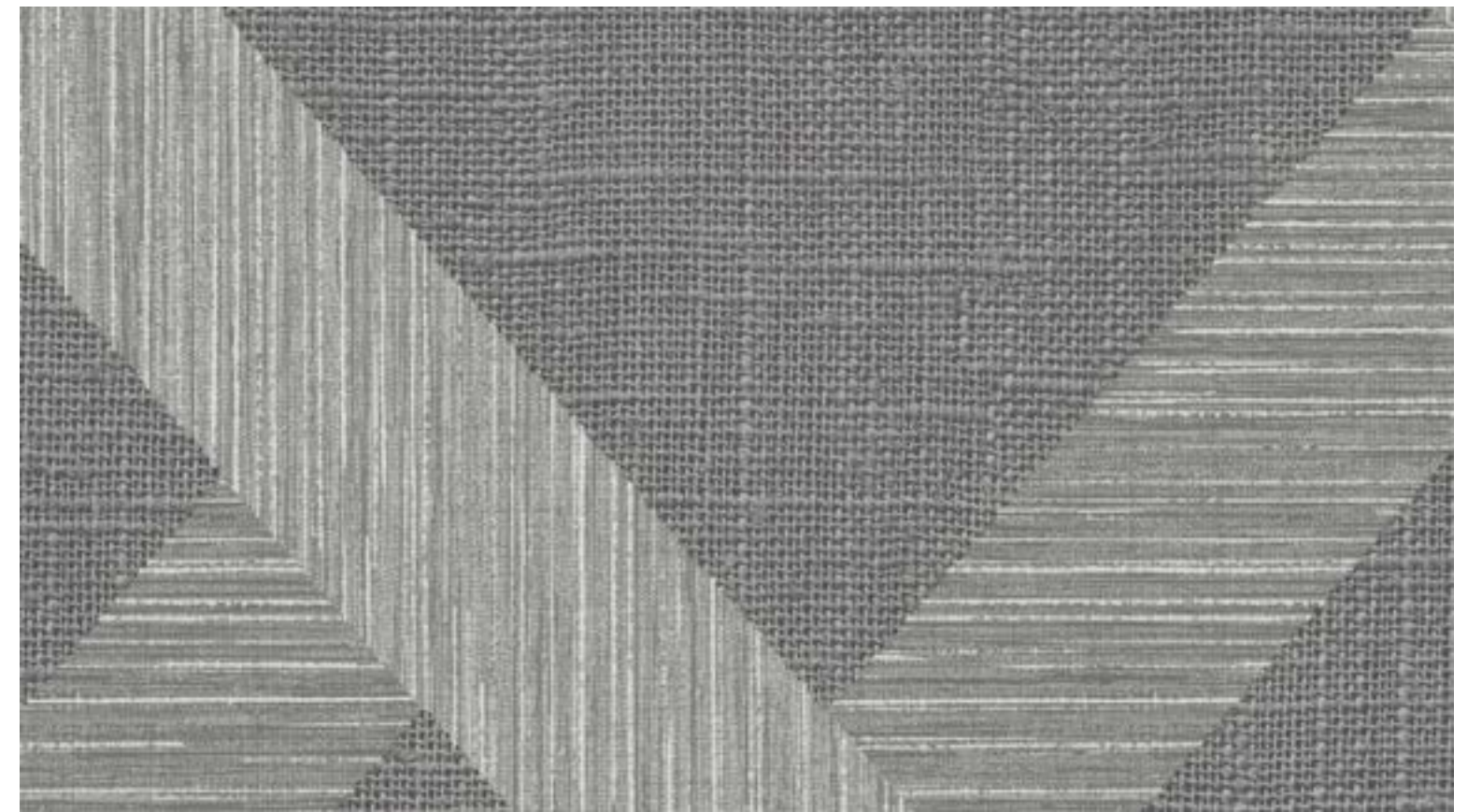
Smoked Oyster

TS85808



Nautic

TS85802



Bon Bon

TS85818



Silk

52"- 54" Type II 20oz. Contract Wallcovering

PHYSICAL PROPERTIES

TOTAL WEIGHT:

U.S. UNITS	METRIC UNITS
20.0 oz per linear yard	619 grams / linear meter
13.3 oz per square yard	451 grams / square meter

BACKING: Nonwoven

WIDTH: 52"- 54" (1.32m - 1.37m)

DESIGN: Random / Reverse Hang

1 YEAR WARRANTY AGAINST MANUFACTURING DEFECTS

*Use only adhesives and primers as recommended by the manufacturer.

All patterns stocked are in 30 linear yard bolts

Copyright © 2021 Questex, All Rights Reserved.
465 Devon Park Drive, Wayne, PA 19087 USA
www.wallquest.com/questex - MADE IN U.S.A.

TECHNICAL SPECIFICATIONS

FIRE HAZARD CLASSIFICATION RESULTS:

- TESTED IN ACCORDANCE WITH ASTM E-84 TUNNEL TEST
- CLASS "A" FIRE RATED
- FLAME SPREAD 25
- SMOKE DEVELOPED 20
- EN13501 (B-s1,d0)

This product is intended for use in buildings that are properly designed and maintained to avoid moisture infiltration, condensation and/or accumulation at wall cavities and wall surfaces, particularly in warm, humid climates.

FEDERAL SPECIFICATIONS:

Questex exceeds G.S.A Federal Specification CCC-W-408D for Type II materials using test procedures detailed in Federal Specifications CCC-T-191-B. This wallcovering passes The National Fire Protection Association NFPA286 Corner Burn Test.

ANTI-MICROBIAL FEATURES:

Vinyl wallcoverings contain bactericides and mildew inhibitors to discourage the growth of mold and mildew under normal conditions.

Silk

52"- 54" Type II 20oz. Contract Wallcovering



SILK



Blanch TS86413



Quiet Apricot TS86405



Seedling TS86434



Mink TS86408



Titian TS86403



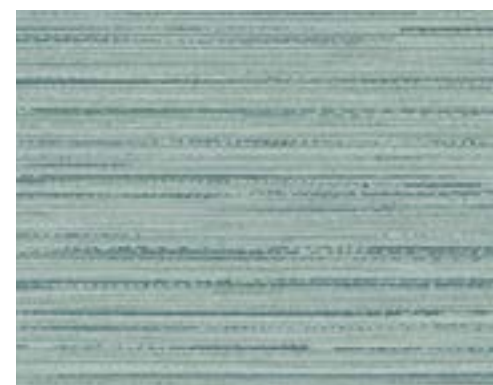
Bundled Sage TS86404



Beryl Blue TS86407



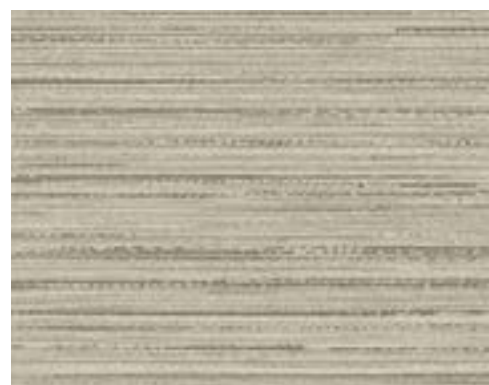
Fawn TS86417



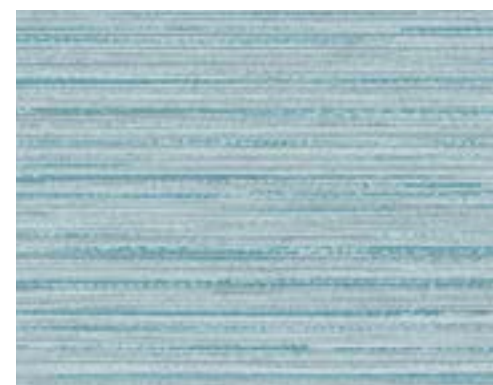
Venus TS86424



Balmy Oak TS86436



Golden Sable TS86427



Wind Chill TS86412

SILK



Bluff TS86428



Hyacinth TS86418



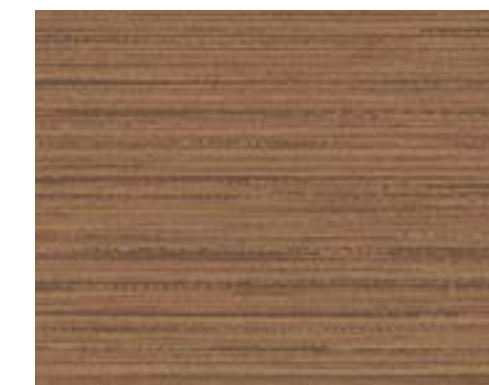
Monarch TS86423



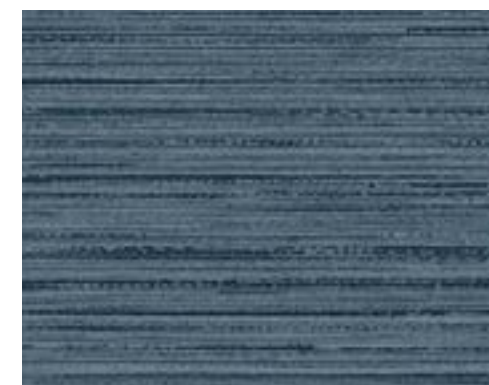
Napa TS86400



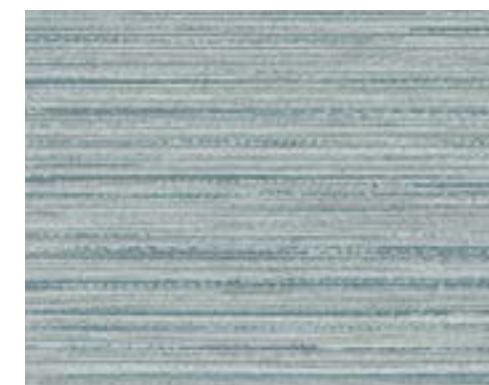
Palisade TS86438



Burnt Orange TS86416



Sovereign TS86402



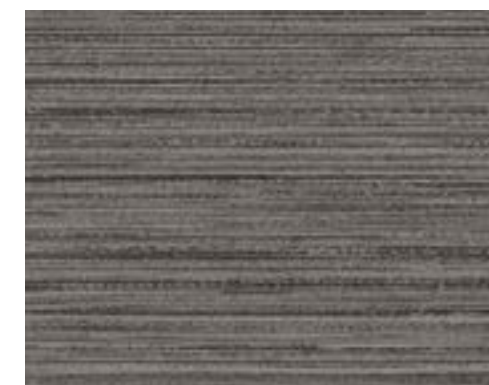
Moxie TS86432



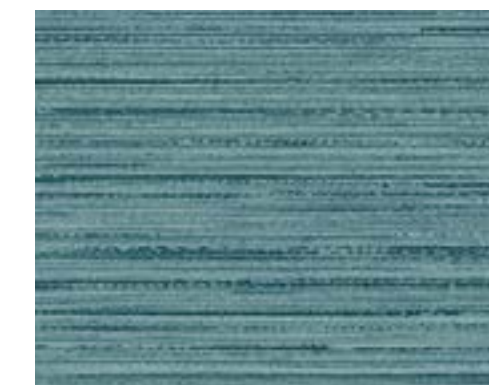
Jasper TS86426



Marengo TS86422



Oolong TS86406



Mineral TS86454



Horizon Plain

52" - 54" Type II 20oz. Contract Wallcovering

PHYSICAL PROPERTIES

TOTAL WEIGHT:

U.S. UNITS	METRIC UNITS
20.0 oz per linear yard	619 grams / linear meter
13.3 oz per square yard	451 grams / square meter

BACKING: Nonwoven

WIDTH: 52" - 54" (1.32m - 1.37m)

DESIGN: Random / Reverse Hang

1 YEAR WARRANTY AGAINST MANUFACTURING DEFECTS

*Use only adhesives and primers as recommended by the manufacturer.

All patterns stocked are in 30 linear yard bolts

Copyright © 2021 Questex, All Rights Reserved.
465 Devon Park Drive, Wayne, PA 19087 USA
www.wallquest.com/questex - MADE IN U.S.A.

TECHNICAL SPECIFICATIONS

FIRE HAZARD CLASSIFICATION RESULTS:

- TESTED IN ACCORDANCE WITH ASTM E-84 TUNNEL TEST
- CLASS "A" FIRE RATED
- FLAME SPREAD 25
- SMOKE DEVELOPED 20
- EN13501 (B-s1,d0)

This product is intended for use in buildings that are properly designed and maintained to avoid moisture infiltration, condensation and/or accumulation at wall cavities and wall surfaces, particularly in warm, humid climates.

FEDERAL SPECIFICATIONS:

Questex exceeds G.S.A Federal Specification CCC-W-408D for Type II materials using test procedures detailed in Federal Specifications CCC-T-191-B. This wallcovering passes The National Fire Protection Association NFPA286 Corner Burn Test.

ANTI-MICROBIAL FEATURES:

Vinyl wallcoverings contain bactericides and mildew inhibitors to discourage the growth of mold and mildew under normal conditions.



Horizon Plain

52" - 54" Type II 20oz. Contract Wallcovering



HORIZON PLAIN



Mallow

TS85700



Chenille

TS85707



Nougat

TS85705



Evaporation

TS85708



Fog Horn

TS85718



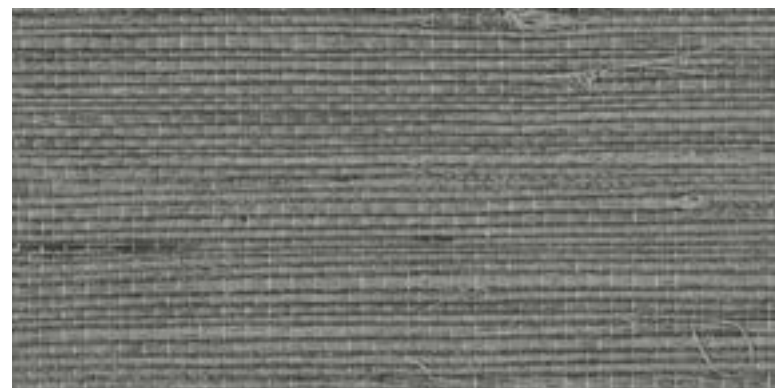
White Truffle

TS85725



Pebble

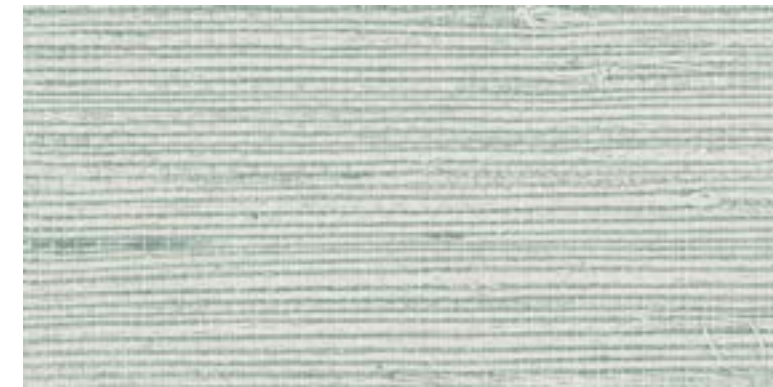
TS85748



Valley Grey

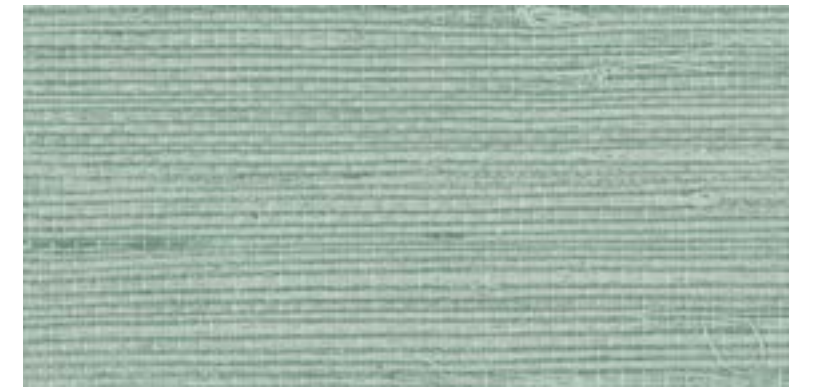
TS85728

HORIZON PLAIN



Tahitian

TS85704



Zen Green

TS85714



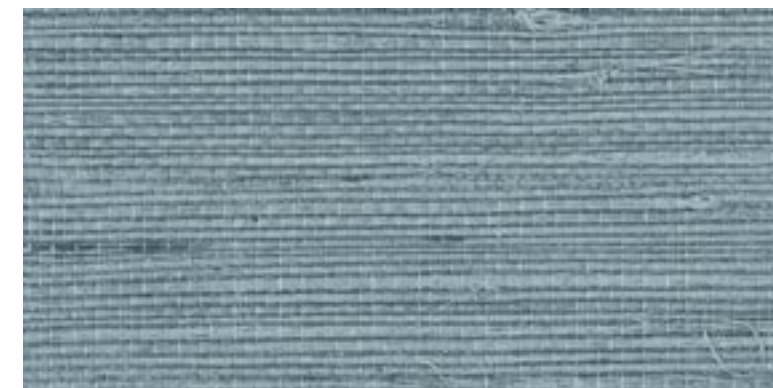
Misty Coast

TS85732



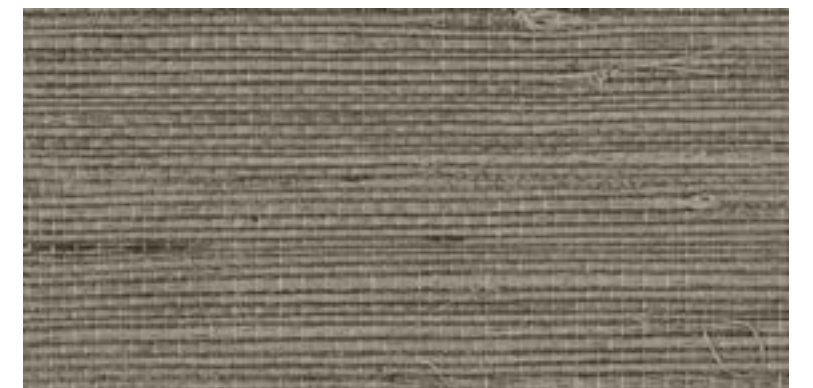
Ethereal Blue

TS85722



Offshore

TS85702



Sassafras

TS85706



Bengal Bay

TS85712



Nomad

TS85715



Linen

52" - 54" Type II 20oz. Contract Wallcovering

PHYSICAL PROPERTIES

TOTAL WEIGHT:

U.S. UNITS	METRIC UNITS
20.0 oz per linear yard	619 grams / linear meter
13.3 oz per square yard	451 grams / square meter

BACKING: Nonwoven

WIDTH: 52" - 54" (1.32m - 1.37m)

DESIGN: Random / Reverse Hang

1 YEAR WARRANTY AGAINST MANUFACTURING DEFECTS

*Use only adhesives and primers as recommended by the manufacturer.

All patterns stocked are in 30 linear yard bolts

Copyright © 2021 Questex, All Rights Reserved.
465 Devon Park Drive, Wayne, PA 19087 USA
www.wallquest.com/questex - MADE IN U.S.A.

TECHNICAL SPECIFICATIONS

FIRE HAZARD CLASSIFICATION RESULTS:

- TESTED IN ACCORDANCE WITH ASTM E-84 TUNNEL TEST
- CLASS "A" FIRE RATED
- FLAME SPREAD 25
- SMOKE DEVELOPED 20
- EN13501 (B-s1,d0)

This product is intended for use in buildings that are properly designed and maintained to avoid moisture infiltration, condensation and/or accumulation at wall cavities and wall surfaces, particularly in warm, humid climates.

FEDERAL SPECIFICATIONS:

Questex exceeds G.S.A Federal Specification CCC-W-408D for Type II materials using test procedures detailed in Federal Specifications CCC-T-191-B. This wallcovering passes The National Fire Protection Association NFPA286 Corner Burn Test.

ANTI-MICROBIAL FEATURES:

Vinyl wallcoverings contain bactericides and mildew inhibitors to discourage the growth of mold and mildew under normal conditions.

Linen

52" - 54" Type II 20oz. Contract Wallcovering



LINEN



Avail TS86900



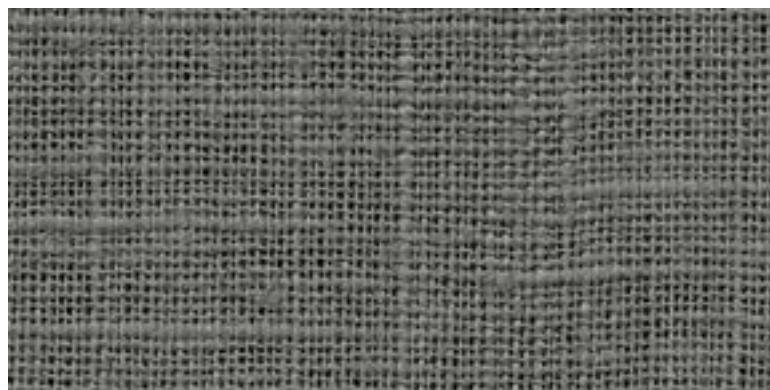
Wafer TS86915



Smoked Oyster TS86908



Nautic TS86902



Bon Bon TS86918



Mallard Teal TS86904



Abaca TS86905



Regal Blue TS86932

LINEN



Minted TS86914



Floret TS86903



Crystal TS86922



Sap TS86913



Thicket TS86907



Manila TS86935



Skim TS86923



Sandstorm TS86925



Cement

52"- 54" Type II 20oz. Contract Wallcovering

PHYSICAL PROPERTIES

TOTAL WEIGHT:

U.S. UNITS	METRIC UNITS
20.0 oz per linear yard	619 grams / linear meter
13.3 oz per square yard	451 grams / square meter

BACKING: Nonwoven

WIDTH: 52"- 54" (1.32m - 1.37m)

DESIGN: Random / Reverse Hang

1 YEAR WARRANTY AGAINST MANUFACTURING DEFECTS

*Use only adhesives and primers as recommended by the manufacturer.

All patterns stocked are in 30 linear yard bolts

Copyright © 2021 Questex, All Rights Reserved.
465 Devon Park Drive, Wayne, PA 19087 USA
www.wallquest.com/questex - MADE IN U.S.A.

TECHNICAL SPECIFICATIONS

FIRE HAZARD CLASSIFICATION RESULTS:

- TESTED IN ACCORDANCE WITH ASTM E-84 TUNNEL TEST
- CLASS "A" FIRE RATED
- FLAME SPREAD 25
- SMOKE DEVELOPED 20
- EN13501 (B-s1,d0)

This product is intended for use in buildings that are properly designed and maintained to avoid moisture infiltration, condensation and/or accumulation at wall cavities and wall surfaces, particularly in warm, humid climates.

FEDERAL SPECIFICATIONS:

Questex exceeds G.S.A Federal Specification CCC-W-408D for Type II materials using test procedures detailed in Federal Specifications CCC-T-191-B. This wallcovering passes The National Fire Protection Association NFPA286 Corner Burn Test.

ANTI-MICROBIAL FEATURES:

Vinyl wallcoverings contain bactericides and mildew inhibitors to discourage the growth of mold and mildew under normal conditions.



Cement

52"- 54" Type II 20oz. Contract Wallcovering



CEMENT



Primer

TS86218



Glaze

TS86215



Sphinx

TS86205



Grove

TS86208

CEMENT



Alpine

TS86210



Silo

TS86228



Nocturne

TS86202



Paver Grey

TS86200



Basketweave

52" - 54" Type II 20oz. Contract Wallcovering

PHYSICAL PROPERTIES

TOTAL WEIGHT:

U.S. UNITS	METRIC UNITS
20.0 oz per linear yard	619 grams / linear meter
13.3 oz per square yard	451 grams / square meter

BACKING: Nonwoven

WIDTH: 52" - 54" (1.32m - 1.37m)

DESIGN: 50.8cm / Reverse Hang/Straight

1 YEAR WARRANTY AGAINST MANUFACTURING DEFECTS

*Use only adhesives and primers as recommended by the manufacturer.

All patterns stocked are in 30 linear yard bolts

Copyright © 2021 Questex, All Rights Reserved.
465 Devon Park Drive, Wayne, PA 19087 USA
www.wallquest.com/questex - MADE IN U.S.A.

TECHNICAL SPECIFICATIONS

FIRE HAZARD CLASSIFICATION RESULTS:

- TESTED IN ACCORDANCE WITH ASTM E-84 TUNNEL TEST
- CLASS "A" FIRE RATED
- FLAME SPREAD 25
- SMOKE DEVELOPED 20
- EN13501 (B-s1,d0)

This product is intended for use in buildings that are properly designed and maintained to avoid moisture infiltration, condensation and/or accumulation at wall cavities and wall surfaces, particularly in warm, humid climates.

FEDERAL SPECIFICATIONS:

Questex exceeds G.S.A Federal Specification CCC-W-408D for Type II materials using test procedures detailed in Federal Specifications CCC-T-191-B. This wallcovering passes The National Fire Protection Association NFPA286 Corner Burn Test.

ANTI-MICROBIAL FEATURES:

Vinyl wallcoverings contain bactericides and mildew inhibitors to discourage the growth of mold and mildew under normal conditions.

Basketweave

52" - 54" Type II 20oz. Contract Wallcovering

QUESTEX
CONTRACT



BASKETWEAVE



Caster Sugar

TS86800



Mirage

TS86818



Yerba

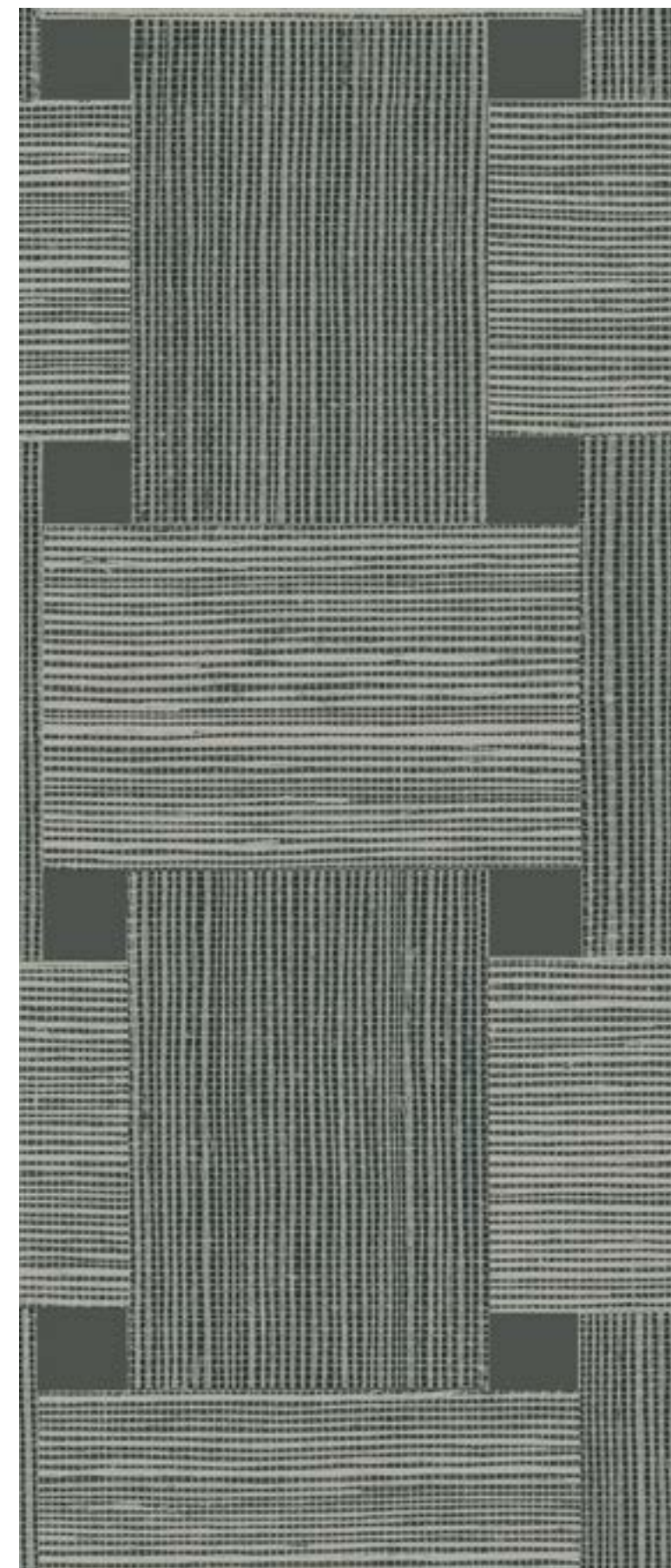
TS86805



Raw Umber

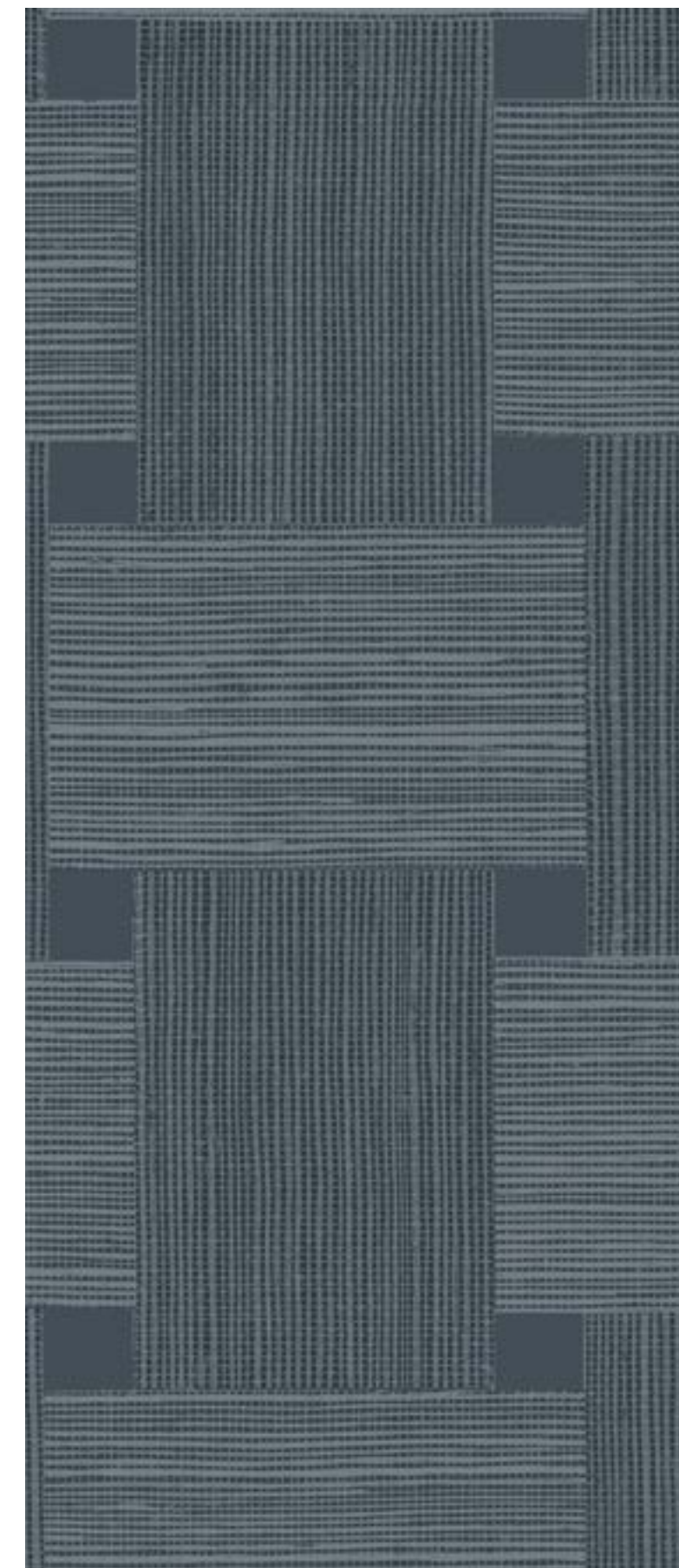
TS86815

BASKETWEAVE



Greyhound

TS86808



Alpha

TS86802



Sisal

52" - 54" Type II 20oz. Contract Wallcovering

PHYSICAL PROPERTIES

TOTAL WEIGHT:

U.S. UNITS	METRIC UNITS
20.0 oz per linear yard	619 grams / linear meter
13.3 oz per square yard	451 grams / square meter

BACKING: Nonwoven

WIDTH: 52" - 54" (1.32m - 1.37m)

DESIGN: Random / Reverse Hang

1 YEAR WARRANTY AGAINST MANUFACTURING DEFECTS

*Use only adhesives and primers as recommended by the manufacturer.

All patterns stocked are in 30 linear yard bolts

Copyright © 2021 Questex, All Rights Reserved.
465 Devon Park Drive, Wayne, PA 19087 USA
www.wallquest.com/questex - MADE IN U.S.A.

TECHNICAL SPECIFICATIONS

FIRE HAZARD CLASSIFICATION RESULTS:

- TESTED IN ACCORDANCE WITH ASTM E-84 TUNNEL TEST
- CLASS "A" FIRE RATED
- FLAME SPREAD 25
- SMOKE DEVELOPED 20
- EN13501 (B-s1,d0)

This product is intended for use in buildings that are properly designed and maintained to avoid moisture infiltration, condensation and/or accumulation at wall cavities and wall surfaces, particularly in warm, humid climates.

FEDERAL SPECIFICATIONS:

Questex exceeds G.S.A Federal Specification CCC-W-408D for Type II materials using test procedures detailed in Federal Specifications CCC-T-191-B. This wallcovering passes The National Fire Protection Association NFPA286 Corner Burn Test.

ANTI-MICROBIAL FEATURES:

Vinyl wallcoverings contain bactericides and mildew inhibitors to discourage the growth of mold and mildew under normal conditions.

QUESTEX[®]
C O N T R A C T

Sisal

52" - 54" Type II 20oz. Contract Wallcovering



SISAL



En Blanc

TS87007



Caster Sugar

TS87000



Mirage

TS87008



Rooibos

TS87005



Campfire Smoke

TS87025



Yerba

TS87035



Greyhound

TS87010



Raw Umber

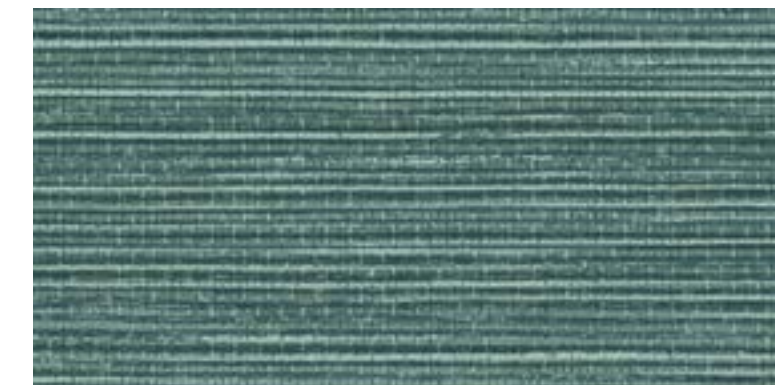
TS87015

SISAL



Roca

TS87003



Meadow

TS87016



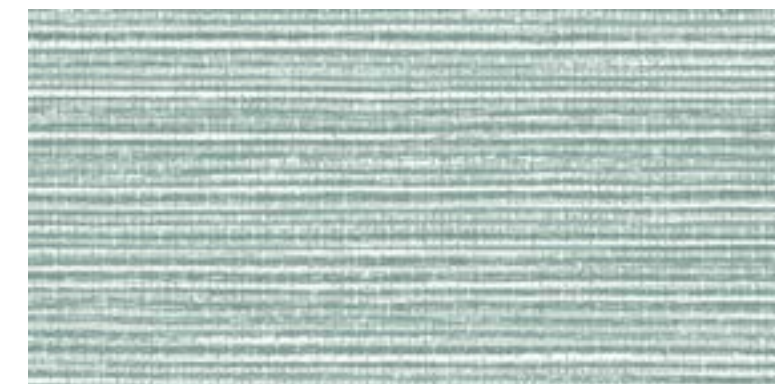
Woodland

TS87017



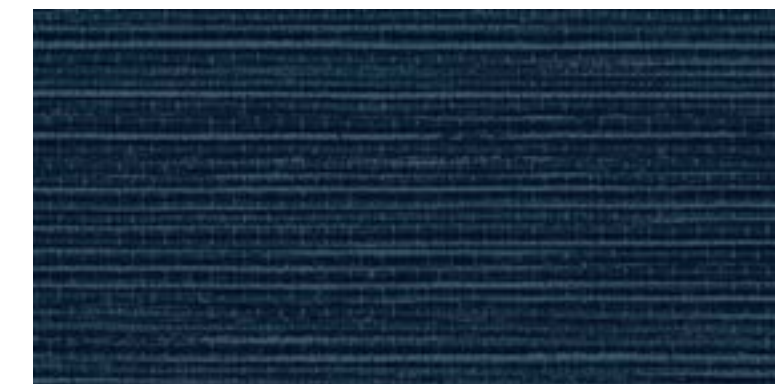
Spanner

TS87028



Calm Waters

TS87006



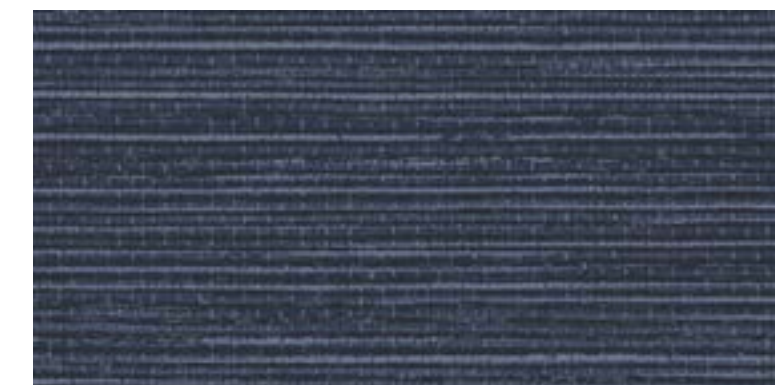
Resort

TS87032



Alpha

TS87012



Caspian

TS87022



Pinnacle

52" - 54" Type II 20oz. Contract Wallcovering

PHYSICAL PROPERTIES

TOTAL WEIGHT:

U.S. UNITS	METRIC UNITS
20.0 oz per linear yard	619 grams / linear meter
13.3 oz per square yard	451 grams / square meter

BACKING: Nonwoven

WIDTH: 52" - 54" (1.32m - 1.37m)

DESIGN: 50.8 cm / Straight

1 YEAR WARRANTY AGAINST MANUFACTURING DEFECTS

*Use only adhesives and primers as recommended by the manufacturer.

All patterns stocked are in 30 linear yard bolts

Copyright © 2021 Questex, All Rights Reserved.
465 Devon Park Drive, Wayne, PA 19087 USA
www.wallquest.com/questex - MADE IN U.S.A.

TECHNICAL SPECIFICATIONS

FIRE HAZARD CLASSIFICATION RESULTS:

- TESTED IN ACCORDANCE WITH ASTM E-84 TUNNEL TEST
- CLASS "A" FIRE RATED
- FLAME SPREAD 25
- SMOKE DEVELOPED 20
- EN13501 (B-s1,d0)

This product is intended for use in buildings that are properly designed and maintained to avoid moisture infiltration, condensation and/or accumulation at wall cavities and wall surfaces, particularly in warm, humid climates.

FEDERAL SPECIFICATIONS:

Questex exceeds G.S.A Federal Specification CCC-W-408D for Type II materials using test procedures detailed in Federal Specifications CCC-T-191-B. This wallcovering passes The National Fire Protection Association NFPA286 Corner Burn Test.

ANTI-MICROBIAL FEATURES:

Vinyl wallcoverings contain bactericides and mildew inhibitors to discourage the growth of mold and mildew under normal conditions.

Pinnacle

52" - 54" Type II 20oz. Contract Wallcovering





Mink

TS86608



Titian

TS86603



Napa

TS86600



Oolong

TS86606



Sovereign

TS86602



Foundation

52"- 54" Type II 20oz. Contract Wallcovering

PHYSICAL PROPERTIES

TOTAL WEIGHT:

U.S. UNITS	METRIC UNITS
20.0 oz per linear yard	619 grams / linear meter
13.3 oz per square yard	451 grams / square meter

BACKING: Nonwoven

WIDTH: 52"- 54" (1.32m - 1.37m)

DESIGN: 50.8 cm / Straight

1 YEAR WARRANTY AGAINST MANUFACTURING DEFECTS

*Use only adhesives and primers as recommended by the manufacturer.

All patterns stocked are in 30 linear yard bolts

Copyright © 2021 Questex, All Rights Reserved.
465 Devon Park Drive, Wayne, PA 19087 USA
www.wallquest.com/questex - MADE IN U.S.A.

TECHNICAL SPECIFICATIONS

FIRE HAZARD CLASSIFICATION RESULTS:

- TESTED IN ACCORDANCE WITH ASTM E-84 TUNNEL TEST
- CLASS "A" FIRE RATED
- FLAME SPREAD 25
- SMOKE DEVELOPED 20
- EN13501 (B-s1,d0)

This product is intended for use in buildings that are properly designed and maintained to avoid moisture infiltration, condensation and/or accumulation at wall cavities and wall surfaces, particularly in warm, humid climates.

FEDERAL SPECIFICATIONS:

Questex exceeds G.S.A Federal Specification CCC-W-408D for Type II materials using test procedures detailed in Federal Specifications CCC-T-191-B. This wallcovering passes The National Fire Protection Association NFPA286 Corner Burn Test.

ANTI-MICROBIAL FEATURES:

Vinyl wallcoverings contain bactericides and mildew inhibitors to discourage the growth of mold and mildew under normal conditions.

QUESTEX[®]
C O N T R A C T
Foundation

52"- 54" Type II 20oz. Contract Wallcovering





Nocturne

TS86502



Sphynx

TS86505



Alpine

TS86500



Ember

TS86510



Grove

TS86508



Chevron Wood

52"- 54" Type II 20oz. Contract Wallcovering

PHYSICAL PROPERTIES

TOTAL WEIGHT:

U.S. UNITS	METRIC UNITS
20.0 oz per linear yard	619 grams / linear meter
13.3 oz per square yard	451 grams / square meter

BACKING: Nonwoven

WIDTH: 52"- 54" (1.32m - 1.37m)

DESIGN: Random / Random

1 YEAR WARRANTY AGAINST MANUFACTURING DEFECTS

*Use only adhesives and primers as recommended by the manufacturer.

All patterns stocked are in 30 linear yard bolts

Copyright © 2021 Questex, All Rights Reserved.
465 Devon Park Drive, Wayne, PA 19087 USA
www.wallquest.com/questex - MADE IN U.S.A.

TECHNICAL SPECIFICATIONS

FIRE HAZARD CLASSIFICATION RESULTS:

- TESTED IN ACCORDANCE WITH ASTM E-84 TUNNEL TEST
- CLASS "A" FIRE RATED
- FLAME SPREAD 25
- SMOKE DEVELOPED 20
- EN13501 (B-s1,d0)

This product is intended for use in buildings that are properly designed and maintained to avoid moisture infiltration, condensation and/or accumulation at wall cavities and wall surfaces, particularly in warm, humid climates.

FEDERAL SPECIFICATIONS:

Questex exceeds G.S.A Federal Specification CCC-W-408D for Type II materials using test procedures detailed in Federal Specifications CCC-T-191-B. This wallcovering passes The National Fire Protection Association NFPA286 Corner Burn Test.

ANTI-MICROBIAL FEATURES:

Vinyl wallcoverings contain bactericides and mildew inhibitors to discourage the growth of mold and mildew under normal conditions.

Chevron Wood

52"- 54" Type II 20oz. Contract Wallcovering

QUESTEX CONTRACT



CHEVRON WOOD



Aura

TS87100



Crest

TS87103



Sere

TS87108



Bister

TS87106

CHEVRON WOOD



Veneer

TS87107



Wintergreen

TS87104



Apex

TS87110



Baikal

TS87102



Silk Mistral

52"- 54" Type II 20oz. Contract Wallcovering

PHYSICAL PROPERTIES

TOTAL WEIGHT:

U.S. UNITS	METRIC UNITS
20.0 oz per linear yard	619 grams / linear meter
13.3 oz per square yard	451 grams / square meter

BACKING: Nonwoven

WIDTH: 52"- 54" (1.32m - 1.37m)

DESIGN: 50.8 cm / Straight

1 YEAR WARRANTY AGAINST MANUFACTURING DEFECTS

*Use only adhesives and primers as recommended by the manufacturer.

All patterns stocked are in 30 linear yard bolts

Copyright © 2021 Questex, All Rights Reserved.
465 Devon Park Drive, Wayne, PA 19087 USA
www.wallquest.com/questex - MADE IN U.S.A.

TECHNICAL SPECIFICATIONS

FIRE HAZARD CLASSIFICATION RESULTS:

- TESTED IN ACCORDANCE WITH ASTM E-84 TUNNEL TEST
- CLASS "A" FIRE RATED
- FLAME SPREAD 25
- SMOKE DEVELOPED 20
- EN13501 (B-s1,d0)

This product is intended for use in buildings that are properly designed and maintained to avoid moisture infiltration, condensation and/or accumulation at wall cavities and wall surfaces, particularly in warm, humid climates.

FEDERAL SPECIFICATIONS:

Questex exceeds G.S.A Federal Specification CCC-W-408D for Type II materials using test procedures detailed in Federal Specifications CCC-T-191-B. This wallcovering passes The National Fire Protection Association NFPA286 Corner Burn Test.

ANTI-MICROBIAL FEATURES:

Vinyl wallcoverings contain bactericides and mildew inhibitors to discourage the growth of mold and mildew under normal conditions.

Silk Mistral

52"- 54" Type II 20oz. Contract Wallcovering





Blanch

TS86707



Seedling

TS86704



Monarch

TS86706



Bluff

TS86712



Mink

TS86700



Tailor Made Vertical

52"- 54" Type II 20oz. Contract Wallcovering

PHYSICAL PROPERTIES

TOTAL WEIGHT:

U.S. UNITS	METRIC UNITS
20.0 oz per linear yard	619 grams / linear meter
13.3 oz per square yard	451 grams / square meter

BACKING: Nonwoven

WIDTH: 52"- 54" (1.32m - 1.37m)

DESIGN: Random / Reverse Hang

1 YEAR WARRANTY AGAINST MANUFACTURING DEFECTS

*Use only adhesives and primers as recommended by the manufacturer.

All patterns stocked are in 30 linear yard bolts

Copyright © 2021 Questex, All Rights Reserved.
465 Devon Park Drive, Wayne, PA 19087 USA
www.wallquest.com/questex - MADE IN U.S.A.

TECHNICAL SPECIFICATIONS

FIRE HAZARD CLASSIFICATION RESULTS:

- TESTED IN ACCORDANCE WITH ASTM E-84 TUNNEL TEST
- CLASS "A" FIRE RATED
- FLAME SPREAD 25
- SMOKE DEVELOPED 20
- EN13501 (B-s1,d0)

This product is intended for use in buildings that are properly designed and maintained to avoid moisture infiltration, condensation and/or accumulation at wall cavities and wall surfaces, particularly in warm, humid climates.

FEDERAL SPECIFICATIONS:

Questex exceeds G.S.A Federal Specification CCC-W-408D for Type II materials using test procedures detailed in Federal Specifications CCC-T-191-B. This wallcovering passes The National Fire Protection Association NFPA286 Corner Burn Test.

ANTI-MICROBIAL FEATURES:

Vinyl wallcoverings contain bactericides and mildew inhibitors to discourage the growth of mold and mildew under normal conditions.



Tailor Made Vertical

52"- 54" Type II 20oz. Contract Wallcovering



TAILOR MADE VERTICAL



Silo

TS85908



Down Feather

TS85905



Wild Truffle

TS85918



Baby's Breath

TS85900



Calcium

TS85928



Honey Maple

TS85955



Birch Bark

TS85906



Sycamore

TS85915

TAILOR MADE VERTICAL



Cinema

TS85938



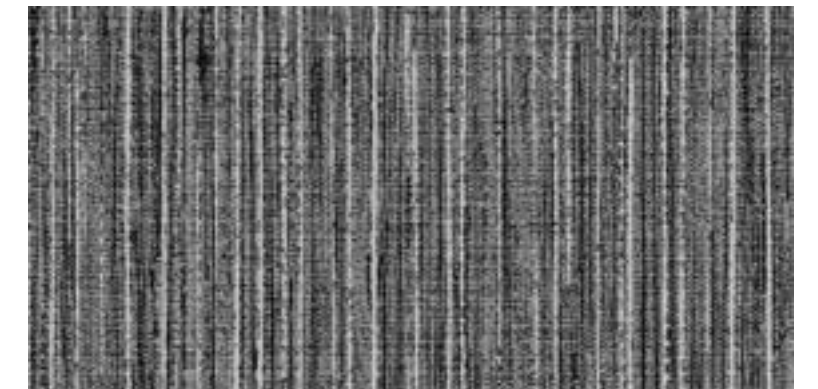
Voya

TS85925



Nectar

TS85935



Obsidian

TS85910



Vert

TS85904



Willow

TS85924



Earthen

TS85907



Odyssey

TS85902