



ASPECTA™
ONE
ORNAMENTAL

A NEW DIMENSION IN FLOORING

TIMELESS MOTIFS INSPIRED BY NATURE.

The rich diversity of shapes, color and life found in nature come alive indoors with Aspecta™ One Ornamental. Building on a solid foundation of beautiful wood and stone looks, these stunning overlay designs accent in all the right ways to create interior spaces that feel just right.

Just.

Declare.

Aspecta proudly supports the International Living Future Institute™ and its transparency programs. Aspecta has DeclareSM Labels for all of its products. The Declare program encourages manufacturers to disclose the ingredients in their products, thus allowing consumers to make informed decisions about the materials they purchase.

Aspecta is proud to be the first flooring manufacturer to acquire a JustSM Label for an Asian factory. Just labels, similar to Declare, are nutrition labels for social justice. With this label, corporations report on a range of organization and employee-related indicators.

Please visit aspectaflooring.com/sustainability to learn about all our transparency efforts.





MASQUERADE

Large medallion-esque patterns entice and intrigue the eye in fresh, surprising ways. Paired with a bold or neutral base, Masquerade will appear as either a positive overprint for a painted impression or a negative overprint that creates the hard-edge effect of carving.



MASQUERADE

MIDTOWN

These authentic, rough concrete styles feature traces of the production process including wood imprints, drying pores and slight chalk efflorescence. Neutral, earthy tones provide the perfect backdrop for the captivating Masquerade overprint.

Size: 24" x 24"/609.6mm x 609.6mm

Edge Detail: Square

Emboss: Textured Concrete

MASQUERADE MIDTOWN / MIDTOWN



MASQUERADE MIDTOWN
COLOR: GRAMERCY
PATTERN# 1722361-Q14

MIDTOWN
COLOR: GRAMERCY
PATTERN# 1722361



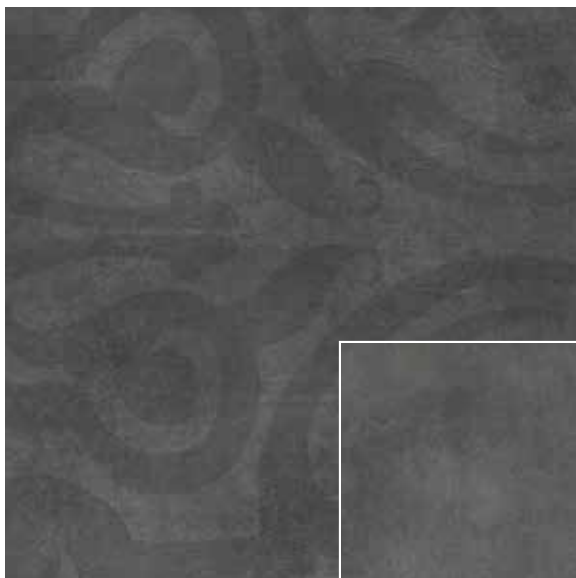
MASQUERADE MIDTOWN
COLOR: FLATIRON
PATTERN# 1722362-Q15

MIDTOWN
COLOR: FLATIRON
PATTERN# 1722362



MASQUERADE MIDTOWN
COLOR: EMPIRE
PATTERN# 1722367-Q16

MIDTOWN
COLOR: EMPIRE
PATTERN# 1722367



MASQUERADE MIDTOWN
COLOR: ROCKEFELLER
PATTERN# 1722369-Q17

MIDTOWN
COLOR: ROCKEFELLER
PATTERN# 1722369



MASQUERADE MIDTOWN
COLOR: GRACE
PATTERN# 1722360-Q18

MIDTOWN
COLOR: GRACE
PATTERN# 1722360



MASQUERADE MIDTOWN
COLOR: BROWNSTONE
PATTERN# 1722364-Q27

MIDTOWN
COLOR: BROWNSTONE
PATTERN# 1722364

MASQUERADE

MIDTOWN PRISM

Midtown Prism brings together striking, on-trend colors from around the world with authentic, rough concrete styles. Combined with a Masquerade overprint, these bold hues energize interior spaces whether used in monochromatic or multicolored design schemes.

Size: 24" x 24"/609.6mm x 609.6mm

Edge Detail: Square

Emboss: Textured Concrete

MASQUERADE MIDTOWN PRISM / MIDTOWN PRISM



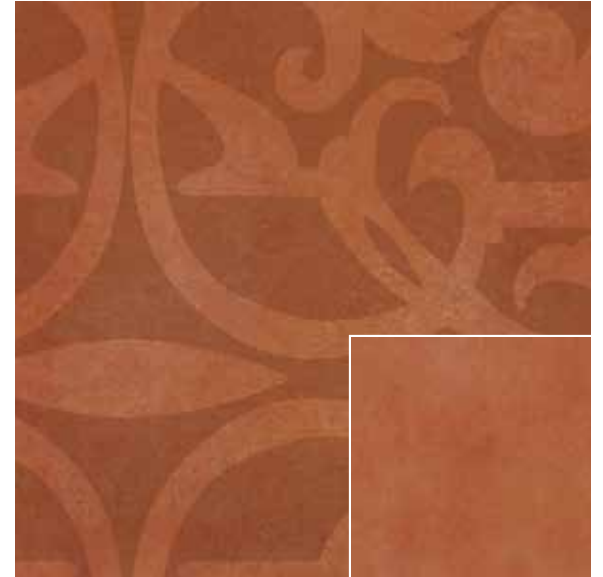
MASQUERADE MIDTOWN PRISM
COLOR: GREEN
PATTERN# Q6-17223618

MIDTOWN PRISM
COLOR: GREEN
PATTERN# 17223618



MASQUERADE MIDTOWN PRISM
COLOR: YELLOW
PATTERN# Q5-17223619

MIDTOWN PRISM
COLOR: YELLOW
PATTERN# 17223619



MASQUERADE MIDTOWN PRISM
COLOR: ORANGE
PATTERN# Q4-17223620

MIDTOWN PRISM
COLOR: ORANGE
PATTERN# 17223620



MASQUERADE MIDTOWN PRISM
COLOR: RED
PATTERN# Q3-17223621

MIDTOWN PRISM
COLOR: RED
PATTERN# 17223621



MASQUERADE MIDTOWN PRISM
COLOR: PLUM
PATTERN# Q1-17223622

MIDTOWN PRISM
COLOR: PLUM
PATTERN# 17223622



MASQUERADE MIDTOWN PRISM
COLOR: BLUE
PATTERN# Q2-17223623

MIDTOWN PRISM
COLOR: BLUE
PATTERN# 17223623

MASQUERADE

Size: 24" x 24"/609.6mm x 609.6mm

MASQUERADE MIDTOWN



MASQUERADE MIDTOWN
COLOR: GRAMERCY - PATTERN# 1722361-Q14



MASQUERADE MIDTOWN
COLOR: FLATIRON - PATTERN# 1722362-Q15



MASQUERADE MIDTOWN
COLOR: EMPIRE - PATTERN# 1722367-Q16



MASQUERADE MIDTOWN
COLOR: ROCKEFELLER - PATTERN# 1722369-Q17



MASQUERADE MIDTOWN
COLOR: GRACE - PATTERN# 1722360-Q18



MASQUERADE MIDTOWN
COLOR: BROWNSTONE - PATTERN# 1722364-Q27

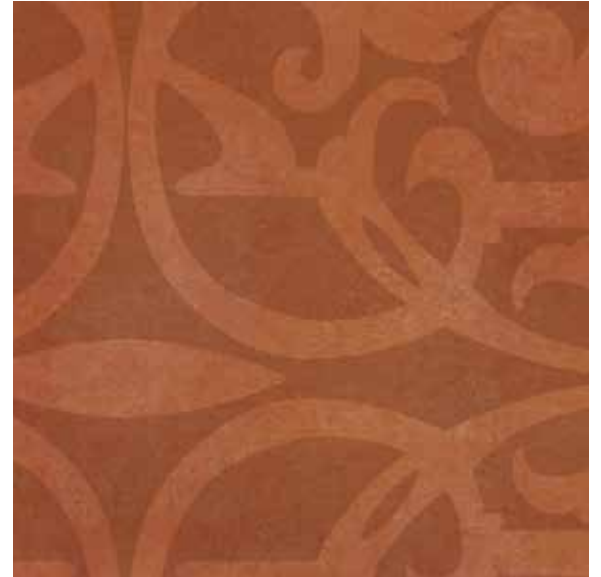
MASQUERADE MIDTOWN PRISM



MASQUERADE MIDTOWN PRISM
COLOR: GREEN - PATTERN# Q6-17223618



MASQUERADE MIDTOWN PRISM
COLOR: YELLOW - PATTERN# Q5-17223619



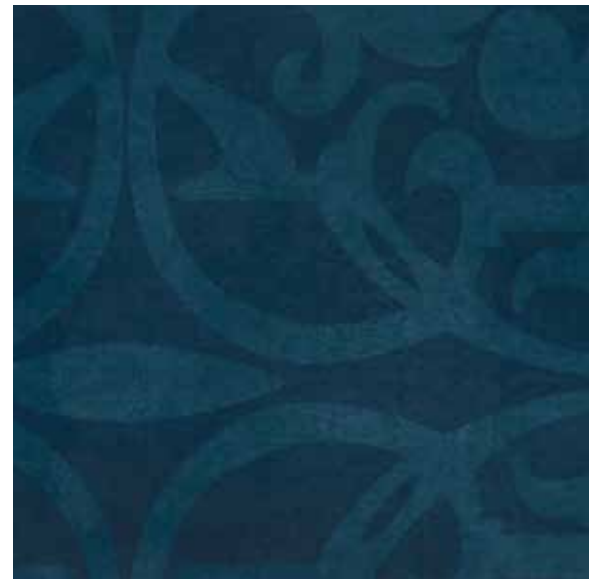
MASQUERADE MIDTOWN PRISM
COLOR: ORANGE - PATTERN# Q4-17223620



MASQUERADE MIDTOWN PRISM
COLOR: RED - PATTERN# Q3-17223621



MASQUERADE MIDTOWN PRISM
COLOR: PLUM - PATTERN# Q1-17223622



MASQUERADE MIDTOWN PRISM
COLOR: BLUE - PATTERN# Q2-17223623



DAMASK

Inspired by heirloom Persian rugs and the emerging “rough luxe” distressed motif found in specialty woven carpet, Damask delivers a distinctive high-end look that takes us back in time with its layered richness and time-worn appearance.





DAMASK

MIDTOWN

The classic neutrals of Midtown meet the time-honored beauty of heirloom and specialty woven carpets reflected in our Damask overlay. These perfect pairings will complement a broad range of interiors with their layered richness and unique textures.

Size: 24" x 24"/609.6mm x 609.6mm

Edge Detail: Square

Emboss: Textured Concrete

DAMASK MIDTOWN / MIDTOWN



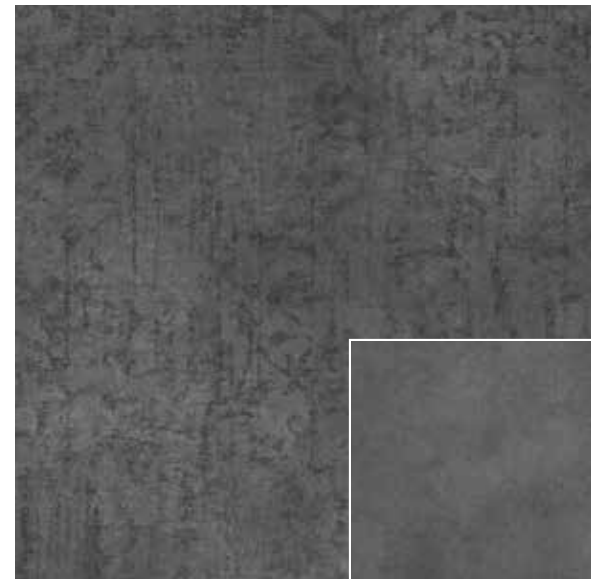
DAMASK MIDTOWN
COLOR: BROWNSTONE
PATTERN# 1722364-D9

MIDTOWN
COLOR: BROWNSTONE
PATTERN# 1722364



DAMASK MIDTOWN
COLOR: GRAMERCY
PATTERN# 1722361-D10

MIDTOWN
COLOR: GRAMERCY
PATTERN# 1722361



DAMASK MIDTOWN
COLOR: ROCKEFELLER
PATTERN# 1722369-D11

-



DAMASK

WASHED WOOD

The Damask Washed Wood collection offers endless design possibilities with its unexpected juxtaposition of rugged, limed wood and the classic woven textures of heirloom and specialty carpets.

Size: 7.87" x 48.11"/200mm x 1222mm

Edge Detail: Square

Emboss: Barnside

DAMASK WASHED WOOD / WASHED WOOD



DAMASK WASHED WOOD - COLOR: MIDNIGHT SILVER - PATTERN# 1326816-D17



WASHED WOOD - COLOR: MIDNIGHT - PATTERN# 1326816



DAMASK WASHED WOOD - COLOR: MIDNIGHT BLACK - PATTERN# 1326816-D18



WASHED WOOD - COLOR: MIDNIGHT - PATTERN# 1326816



DAMASK WASHED WOOD - COLOR: ARCTIC - PATTERN# 1326819-D22



WASHED WOOD - COLOR: ARCTIC - PATTERN# 1326819

The background of the entire page is a close-up photograph of vertical wood planks. The planks are arranged in a staggered pattern, showing a mix of light and dark wood tones. The wood grain is clearly visible, with some planks showing prominent knots and natural imperfections. The lighting is even, highlighting the texture and color variations of the wood.

DAMASK

SHIPWRIGHT

Combine the popularity of oak with the rich texture of our Damask overlay for a stunningly beautiful floor that will complement a broad range of interiors.

Size: 7.87" x 48.11"/200mm x 1222mm
Edge Detail: Square
Emboss: In-Register

DAMASK SHIPWRIGHT / SHIPWRIGHT



DAMASK SHIPWRIGHT - COLOR: DANZIG - PATTERN# 1329411-D22



SHIPWRIGHT - COLOR: DANZIG - PATTERN# 1329411



DAMASK SHIPWRIGHT - COLOR: MONARCH - PATTERN# 1329415-D24



SHIPWRIGHT - COLOR: MONARCH - PATTERN# 1329415



DAMASK SHIPWRIGHT - COLOR: LYNX - PATTERN# 1329416-D25



SHIPWRIGHT - COLOR: LYNX - PATTERN# 1329416



DAMASK SHIPWRIGHT - COLOR: PIONEER - PATTERN# 1329418-D27



SHIPWRIGHT - COLOR: PIONEER - PATTERN# 1329418

The image shows a close-up of a wood plank surface. The planks are arranged vertically, with a prominent vertical ridge running down the center. The wood has a dark, muted greenish-grey color with natural grain patterns and some darker spots. The lighting is even, highlighting the texture of the wood.

DAMASK

ALPINE RIDGE

The lightly faded, worn and weathered details of these Alpine Ridge planks take on an even more enchanting luster when matched with our Damask overlay.

Size: 7.87" x 48.11"/200mm x 1222mm

Edge Detail: Square

Emboss: Sawcut

DAMASK ALPINE RIDGE / ALPINE RIDGE



DAMASK ALPINE RIDGE - COLOR: MICA - PATTERN# 1328519-D25



ALPINE RIDGE - COLOR: MICA - PATTERN# 1328519



DAMASK ALPINE RIDGE - COLOR: MOONSTONE - PATTERN# 1328510-D26



ALPINE RIDGE - COLOR: MOONSTONE - PATTERN# 1328510

DAMASK

Planks are available in: 7.87" x 48.11"/200mm x 1222mm

Tiles are available in: 24" x 24"/609.6mm x 609.6mm

DAMASK MIDTOWN



DAMASK MIDTOWN
COLOR: BROWNSTONE - PATTERN# 1722364-D9



DAMASK MIDTOWN
COLOR: GRAMERCY - PATTERN# 1722361-D10



DAMASK MIDTOWN
COLOR: ROCKEFELLER - PATTERN# 1722369-D11

DAMASK WASHED WOOD



DAMASK WASHED WOOD - COLOR: MIDNIGHT SILVER - PATTERN# 1326816-D17



DAMASK WASHED WOOD - COLOR: MIDNIGHT BLACK - PATTERN# 1326816-D18



DAMASK WASHED WOOD - COLOR: ARCTIC - PATTERN# 1326819-D22

DAMASK ALPINE RIDGE



DAMASK ALPINE RIDGE - COLOR: MICA - PATTERN# 1328519-D25



DAMASK ALPINE RIDGE - COLOR: MOONSTONE - PATTERN# 1328510-D26

DAMASK SHIPWRIGHT



DAMASK SHIPWRIGHT - COLOR: DANZIG - PATTERN# 1329411-D22



DAMASK SHIPWRIGHT - COLOR: MONARCH - PATTERN# 1329415-D24



DAMASK SHIPWRIGHT - COLOR: LYNX - PATTERN# 1329416-D25



DAMASK SHIPWRIGHT - COLOR: PIONEER - PATTERN# 1329418-D27



MALTA

Intricate and exotic, Malta was born out of the Moorish design influence which features ornate details and elements of nature. Coupled with the beauty of natural woodgrains, Malta works well in vintage, mid-century, and contemporary settings.







MALTA

SHIPWRIGHT

First, we reinvented Oak by paying homage to its natural imperfections along with the cutting and planing marks. Next, we introduced it to our Malta overlay. The result is a delight for the senses.

Size: 7.87" x 48.11"/200mm x 1222mm

Edge Detail: Square

Emboss: In-Register

MALTA SHIPWRIGHT / SHIPWRIGHT



MALTA SHIPWRIGHT - COLOR: MONARCH PLUM - PATTERN# 1329415-M14



SHIPWRIGHT - COLOR: MONARCH - PATTERN# 1329415



MALTA SHIPWRIGHT - COLOR: MONARCH BLUE - PATTERN# 1329415-M15



SHIPWRIGHT - COLOR: MONARCH - PATTERN# 1329415

The background of the entire page is a close-up, vertical view of several wooden planks. The wood has a natural, weathered appearance with various shades of brown, tan, and grey, showing prominent grain patterns and some surface imperfections like knots and cracks. The planks are arranged in a staggered, vertical layout.

MALTA

ALPINE RIDGE

The uniquely beautiful story told by the lightly faded and weathered details of these woodgrains moves to an entirely new level when introduced to our Malta overlay.

Size: 7.87" x 48.11"/200mm x 1222mm

Edge Detail: Square

Emboss: Sawcut

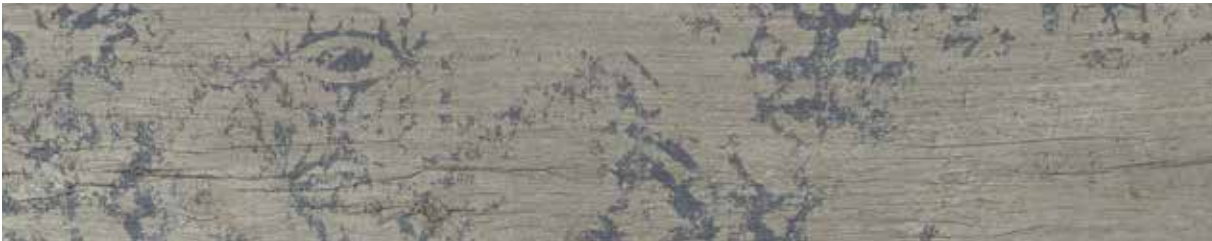
MALTA ALPINE RIDGE / ALPINE RIDGE



MALTA ALPINE RIDGE - COLOR: MICA PLUM - PATTERN# 1328519-M12



ALPINE RIDGE - COLOR: MICA - PATTERN# 1328519



MALTA ALPINE RIDGE - COLOR: MICA BLUE - PATTERN# 1328519-M13



ALPINE RIDGE - COLOR: MICA - PATTERN# 1328519



MALTA ALPINE RIDGE - COLOR: MICA BROWN - PATTERN# 1328519-M14



ALPINE RIDGE - COLOR: MICA - PATTERN# 1328519



MALTA ALPINE RIDGE - COLOR: MOONSTONE SILVER - PATTERN# 1328510-M20



ALPINE RIDGE - COLOR: MOONSTONE - PATTERN# 1328510

MALTA

Size: 7.87" x 48.11"/200mm x 1222mm

MALTA SHIPWRIGHT



MALTA SHIPWRIGHT - COLOR: MONARCH PLUM - PATTERN# 1329415-M14



MALTA SHIPWRIGHT - COLOR: MONARCH BLUE - PATTERN# 1329415-M15

MALTA ALPINE RIDGE



MALTA ALPINE RIDGE - COLOR: MICA PLUM - PATTERN# 1328519-M12



MALTA ALPINE RIDGE - COLOR: MICA BLUE - PATTERN# 1328519-M13



MALTA ALPINE RIDGE - COLOR: MICA BROWN - PATTERN# 1328519-M14



MALTA ALPINE RIDGE - COLOR: MOONSTONE SILVER - PATTERN# 1328510-M20



EMBOSS

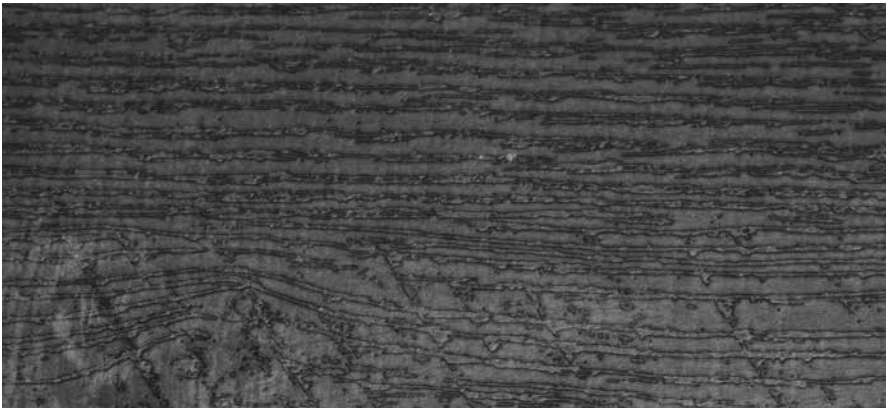
Discover Aspecta® One Ornamental's beautiful collection of in-register and specialty-design Wood embosses. The Tile collection boasts an exclusive embossing technique - Textured Concrete.



BARNSIDE - The relief-like surface image of barnside reflects natural aged wooden planks and gives rustic wood interiors a truly authentic finish.



IN-REGISTER - This beautiful oak is straight-grown and virtually knotless, with only slight imperfections as well as cutting and planing marks reflected in its surface.



SAWCUT - Unplaned and unpolished, sawcut is construction timber cut directly from tree trunks, with sawing marks and sawdust intact. This gives this wood unmatched character and authenticity.

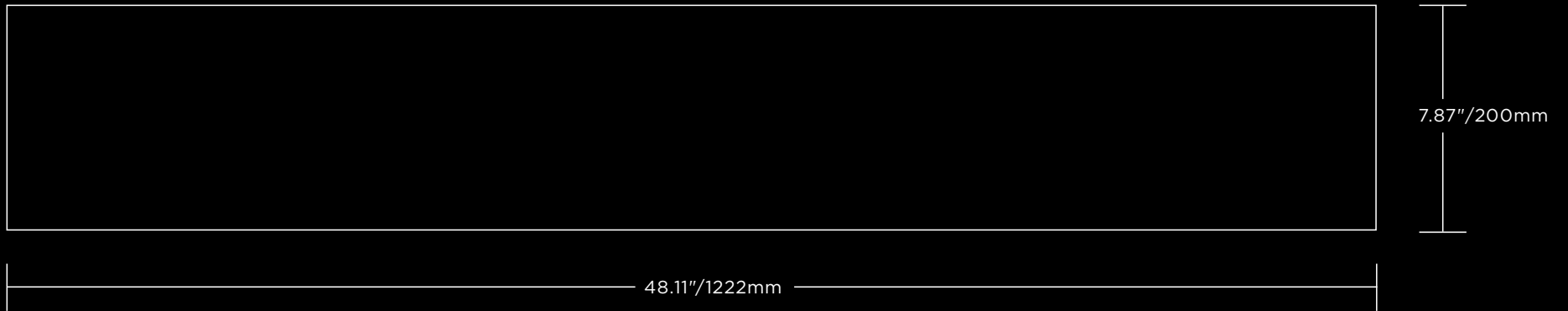


TEXTURED CONCRETE - With its rough texture, this freshly dried industrial concrete shows traces of the preparation process, such as drying pores and the beat trace of smoothing tools. Perfect for adding an industrial feel to any setting.

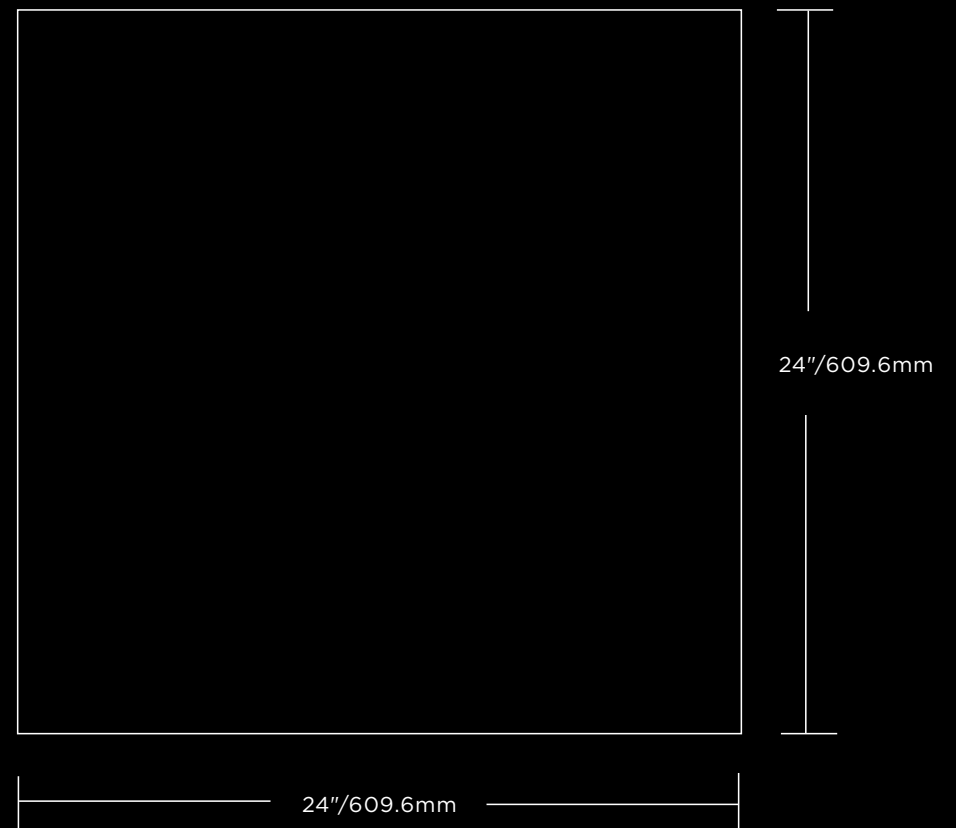
TECHNICAL DETAILS

Aspecta One Ornamental planks and tiles are available in two sizes:

PLANK



TILE



TECHNICAL DETAILS

PHYSICAL PROPERTIES & PACKAGING (DRYBACK - 0.098" GAUGE / 22MIL WEAR LAYER)		
Size	7.87" x 48.11" (200mm x 1222mm)	24" x 24" (609.6mm x 609.6mm)
Construction	Solid Vinyl Tile/LVT	Solid Vinyl Tile/LVT
Use	Commercial	Commercial
Wear Layer	22 mil (0.55mm)	22 mil (0.55mm)
Edge Detail	Square Edge	Square Edge
Finish	Urethane Coating with Ceramic Bead Particles	Urethane Coating with Ceramic Bead Particles
Gauge	0.098" (2.5mm)	0.098" (2.5mm)
Pieces/Carton	12	9
Coverage/Piece	2.63 Sq.Ft. (0.244 Sq.M.)	4 Sq.Ft. (0.371 Sq.M.)
Coverage/Carton	31.56 Sq.Ft. (2.93 Sq.M.)	36 Sq.Ft. (3.34 Sq.M.)
Coverage/Pallet	40 Cartons/Pallet (1,262.4 Sq.Ft./117.2 Sq.M.)	20 Cartons/Pallet (720 Sq.Ft./66.8 Sq.M.)
Coverage/Container	36 Pallets/Container (45,446 Sq.Ft./4,219.2 Sq.M.)	61 Pallets/Container (43,920 Sq.Ft./4,074.8 Sq.M.)
Aspecta [®] One Limited Commercial Warranty ¹	Material: 20 Years (100%) Labor: 10 Years (Pro-Rated)	Material: 20 Years (100%) Labor: 10 Years (Pro-Rated)

NORTH AMERICAN STANDARDS - MANUFACTURING & USAGE (ASTM F1700)			
Standard	Description	Requirements	Results
ASTM F1700	Classification	Refer to Standard	Class III, Type B
ASTM F386	Thickness	±0.005"	Passes Requirements
ASTM F410	Wear Layer Thickness	Commercial Classification: ≥20mil (0.5mm)	Passes Requirements
ASTM F2421/ ASTM F2055	Size & Squareness	Size: ±0.016"/Linear Foot; Squareness: ≤0.010"	Passes Requirements
ASTM F1914	Residual Indentation	Average <8% Maximum - Any Sample ≤10%	Surpasses Requirements
ASTM F137	Flexibility	No cracks/breaks (1"/25.4mm Mandrel)	Surpasses Requirements
ASTM F2199	Dimensional Stability	≤0.020"/Linear Foot	Surpasses Requirements
ASTM F925	Chemical Resistance	No more than "Slight Change"	Passes Requirements
ASTM F1514	Resistance to Heat	Average & Max ΔE <8.0	Surpasses Requirements
ASTM F1515	Resistance to Light	Average & Max ΔE <8.0	Surpasses Requirements

NORTH AMERICAN STANDARDS – SAFETY & PERFORMANCE

Standard	Description	Requirements	Results
ASTM E648	Radiant Panel (Critical Radiant Flux)	Class I: $\geq 0.45 \text{ W/cm}^2$	Passes Requirements
ASTM E662	Smoke Density	Flaming & Non-Flaming ≤ 450	Passes Requirements
CAN/ULC S102.2-10 ²	Surface Burning Characteristics, Canada	Use dependent	Flame Spread Rating (FSR): ≤ 15 Smoke Developed Class. (SDC): ≤ 150
CDPH/EHLB Standard v1.2	VOCs/TVOCs, Formaldehyde	Refer to Standard	Passes Requirements
ASTM F963	Heavy Metals	Refer to Standard	Passes Requirements
ASTM D7823/CPSC-CH-C1001-09.3	Pthalates	Refer to CPSIA ³	Passes Requirements
ASTM D2047	Coefficient of Friction / Slip Resistance	N/A	≥ 0.6 (Dry)
ASTM F970	Static Load	$\pm 0.005''$, 250-Lbs. Load	Passes Requirements
SIM Test	Static Load Limit	Test to Limit ($\pm 0.005''$)	$\geq 1,000$ lbs.
ASTM D4060	Abrasion Resistance	N/A	$\geq 20,000$ cycles (Varies with emboss)

NORTH AMERICAN STANDARDS – SOUND

Standard	Description	Product(s) Tested	Assembly	IBC Requirements ⁴	Results
ASTM E90 & ASTM E413	Airborne Sound Transmission Loss of Building Partitions and Elements (STC/Sound Transmissions Class)	Aspecta One + Prevail GDP	6" Concrete Slab	STC ≥ 50	STC 51 (Surpasses Requirements)
			6" Concrete Slab + Drop-Ceiling	STC ≥ 50	STC 61 (Surpasses Requirements)
ASTM E492 & ASTM E989	Impact Sound Transmission Through Floor-Ceiling Assemblies (IIC/Impact Insulation Class)	Aspecta One + Prevail GDP	6" Concrete Slab	IIC ≥ 50	IIC 50 (Passes Requirements)
			6" Concrete Slab + Drop-Ceiling	IIC ≥ 50	IIC 70 (Surpasses Requirements)
ASTM E2179 & ASTM E989	Effectiveness of Floor Coverings in Reducing Impact Sound Transmission (Δ IIC / Δ Impact Insulation Class)	Aspecta One + Prevail GDP	6" Concrete Slab	N/A	Δ IIC 21
		Aspecta One	6" Concrete Slab	N/A	Δ IIC 14

FOOTNOTES

- 1) **Aspecta One Limited Commercial Warranty:** Please see full terms and conditions of our warranties at www.aspecta flooring.com
- 2) **CAN/ULC S102.2-10:** Results obtained when installed with Prevail® 4000 2-Part Epoxy Adhesive or with Prevail 6000 PSA (Pressure Sensitive Adhesive)
- 3) **CPSIA:** Consumer Product Safety Improvement Act
- 4) **IBC:** International Building Code



ASPECTA™
A NEW DIMENSION IN FLOORING

ERME Office:
ASPECTA BV
Argon 37a
4751XC Oud Gastel
The Netherlands
Tel: +31 (0) 88 1662500
info@aspectaflooring.com

USA Office:
ASPECTA US
15 Oakwood Ave.
Norwalk, CT 06850
USA
Tel +01 (855) 4007732
info@aspectaflooring.com

APAC Office:
ASPECTA APAC P/L C/- BDO
Level 14, 140 William St.
Melbourne, 3000. Vic
Australia
Tel: +61 (0) 41 2368067
info@aspectaflooring.com

ASPECTAFLOORING.COM