



DOUBLE WEAVE  
STRIE FABRIC



ROSEMARY  
HALLGARTEN

# ROSEMARY HALLGARTEN

## Double Weave Strie Fabric

Filtered through an artists' lens, Double Weave Strie uses a luxe double bouclé as its canvas, putting a painterly spin on this soft woven that is as sumptuous to the eye as it is to the hand. The twisted color effect adds a pop of interest to upholstery, pillows, or bedding.

### DETAILS:

Wyzenbeek: 25,000 Rubs

Composition: Alpaca, Polyamide

Width: 50" / 127 cm

Made in Peru

4 Colors

### CARE:

Professionally clean only

### CONTACT:

Please contact us for a sample or any customization inquiries.

Rosemary Hallgarten Inc.

Headquarters

163 Main Street

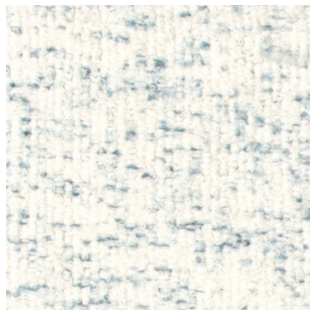
Norwalk, CT 06851

203-259-1003

[samples@rosemaryhallgarten.com](mailto:samples@rosemaryhallgarten.com)



2-6434  
MACARON



2-6372  
DELFT



2-4933  
SNOW CAP



2-4951  
EPIDOTE