

A photograph of a blue armchair with a yellow blanket draped over it, set against a rustic wooden wall with Gothic-style carvings. The chair is on a white, textured rug. The scene is lit with warm, natural light from the left, creating soft shadows.

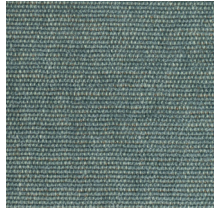
NATASHA
FABRIC

ROSEMARY
HALLGARTEN

ROSEMARY HALLGARTEN



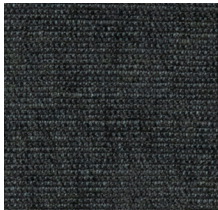
2-8161
ICY



2-4826
CALDERA



2-4829
OIA



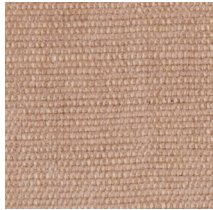
2-8162
INKWELL



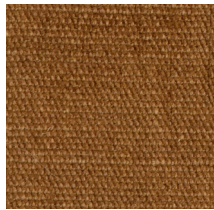
2-8163
STARRY NIGHT



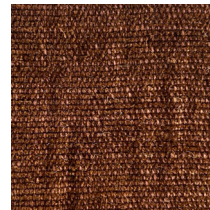
2-8160
ALLOY



2-7211
PALOMA



2-7210
FIRA



2-7212
UMBER



2-7209
ARROWHEAD



2-4830
PEGASUS

Natasha Fabric

Natasha brings texture to Rosemary's expanding line of linens. With colors inspired by the islands of Greece, this fabric is perfectly suited for upholstery use, with its thicker - sueded effect while still capturing the classic drape of linen.

DETAILS:

Composition: 39% Linen, 27% Jute,
24% Viscose, 10% Cotton

Width: 55" / 140cm

Martindale: 30,000

Made in Italy

11 Colors

CONTACT:

Please contact us for a sample or any
customization inquiries.

Rosemary Hallgarten Inc.

Headquarters

163 Main Street

Norwalk, CT 06851

203-259-1003

samples@rosemaryhallgarten.com