



FISHBONE FABRIC

ROSEMARY  
HALLGARTEN

# ROSEMARY HALLGARTEN

## Fishbone Fabric

This sheer open weave and slubby texture was inspired by the sea and the creatures within.

### DETAILS:

Composition: 70% Polyester / 30% Linen

Width: 118" / 300 cm

Country of Origin: Europe

2 Colors

### CARE:

Dry clean only

### CONTACT:

Please contact us for a sample or any customization inquiries.

Rosemary Hallgarten Inc.

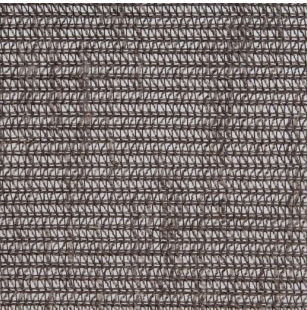
Headquarters

163 Main Street

Norwalk, CT 06851

203-259-1003

[samples@rosemaryhallgarten.com](mailto:samples@rosemaryhallgarten.com)



2-7730  
DELPHI



2-7731  
PAMPAS