

A close-up photograph of a brown fabric with a white dotted pattern, likely a chair or sofa. The fabric has a textured, slightly fuzzy appearance. The pattern consists of small, irregular white dots arranged in a grid-like fashion. The lighting is soft and even, highlighting the texture of the material.

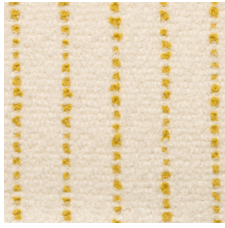
CHALK STRIPE
FABRIC

ROSEMARY
HALLGARTEN

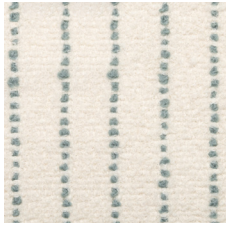
ROSEMARY HALLGARTEN



2-7135
WHITE / PARTY FAVOR



2-7136
WHITE / SIREN



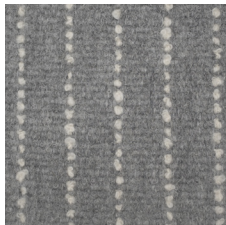
2-7137
WHITE / SURF



2-5269
WHITE / NAVY



2-5006
MUSHROOM / WHITE



2-5007
SILVER / WHITE



2-5268
INK / WHITE



2-5005
CHARCOAL / WHITE



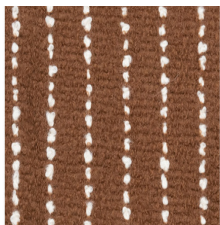
2-7270
EPIDOTE STRIE / WHITE



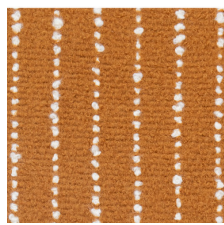
2-6646
BUTTERSCOTCH



2-5004
CAMEL / WHITE



2-7991
CINNABAR/WHITE



2-7992
MARMALADE/WHITE

Chalk Stripe Fabric

Chalk Stripe introduces our best-selling double bouclé as a patterned fabric. Taking a page from bespoke fashion, this thick alpaca bouclé puts a whimsical spin on pinstripes. Hand-woven by artisans who have worked with Rosemary for more than a decade, Chalk Stripe is currently offered as the fabric but can be custom-ordered as a throw or bed cover.

DETAILS:

Wyzenbeek: 50,000 Rubs

Composition: Alpaca, Polyamide

Width: 50" / 127 cm

Made in Peru

13 Colors

CARE:

Professionally clean only

CONTACT:

Please contact us for a sample or any customization inquiries.

Rosemary Hallgarten Inc.

Headquarters

163 Main Street

Norwalk, CT 06851

203-259-1003

samples@rosemaryhallgarten.com