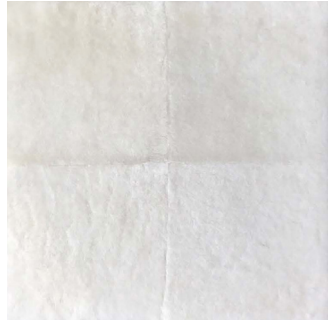


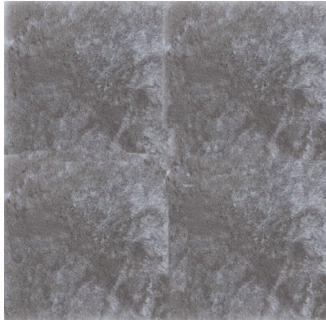
# ROSEMARY HALLGARTEN



2-5445  
JET



2-505  
ERMINE



2-507  
MINK



2-4750  
BLUSH



2-5730  
HEMATITE

## Arrabelle Fabric

Sourced from the finest sheep around the world, and hand-dyed and fabricated in Turkey, Arrabelle pushes Rosemary's textural collection even further in terms of decadent softness and ultra-plushness. The sheen of the shearling gives this fabric a natural watercolor effect and is like the finest silk pile to the touch.

### DETAILS:

Composition: 100% Sheep Fur

### Repeat:

- 9" x 9"
- 6" x 12"
- 12" x 12"

Width: Made to Order

Made in Turkey

5 Colors

### CARE:

Please avoid direct sunlight

### CONTACT:

Please contact us for a sample or any customization inquiries.

Rosemary Hallgarten Inc.

Headquarters

163 Main Street

Norwalk, CT 06851

203-259-1003

[samples@rosemaryhallgarten.com](mailto:samples@rosemaryhallgarten.com)