

A close-up photograph of a dark grey, textured fabric ottoman. The fabric has a fine, woven appearance with some natural fiber texture. The ottoman is resting on a cream-colored, quilted surface with a diamond-shaped pattern. The lighting is soft, highlighting the texture of both materials.

ALPACA LINEN
PLUSH FABRIC

ROSEMARY
HALLGARTEN

ROSEMARY HALLGARTEN



Alpaca Linen Plush Fabric

As one of the stand-out items from her Spring collection, Alpaca Linen Plush plays on Rosemary's love of texture. Furthering the playful nubbiness of her standard Alpaca Linen, Rosemary introduces a significantly thicker weave with a natural intricate textured pattern. We love to see this fabric on sofas, chairs, and pillows.

DETAILS:

Composition: Alpaca/Linen

Width: 50" / 127 cm

Made in Peru

2 Colors

CARE:

Professionally clean only

CONTACT:

Please contact us for a sample or any customization inquiries.

Rosemary Hallgarten Inc.

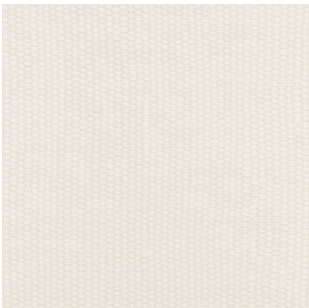
Headquarters

163 Main Street

Norwalk, CT 06851

203-259-1003

samples@rosemaryhallgarten.com



2-3405
ALTA



2-3406
DOVE