

Digital Panoramic and 3D Imaging

Superior Image Quality • 2-in-1 System • Multi-FOV



The Vatech Dental Imaging Equipment Family



Pax-Flex



PaX-Duo3D PLUS



PaX-Reve3D



PaX-Primo



EzSensor

RXDigital

RX Soluciones de Imagenología

PaX-Duo3D PLUS offers the most efficient 2-in-1 solution for dental specialists by providing high-quality panoramic and 3D images at an affordable price. With the auto-switching system's panoramic and CBCT sensors, users can easily toggle the scan, multiplying imaging options and supplying the information needed to carry out a full diagnosis. The upgraded PLUS model is the new standard of CBCT.

2-IN-1 SYSTEM

The Pax-Duo3D PLUS offers 2-in-1 flexibility with two embedded auto-switching sensors that rotate automatically between true Panoramic and Cone Beam CT modes.

SUPERIOR IMAGE QUALITY

Featuring a 0.12 mm – 0.4 mm voxel size, the PaX-Duo3D PLUS produces Ultra High Definition radiographic images in brilliant greyscale. Metal Artifact Remove (MAR) technology minimizes scatter. Auto Focus Technology compensates incorrect proper patient positioning, making the PLUS model very user friendly.

SELECTABLE FOV FUNCTION

PaX-Duo3D PLUS provides multi-FOV sizes: 5x5, 8.5x5, 8.5x8.5 and 12x8.5, allowing users to choose a specific region of interest. The capture modes include Maxillary, Mandible, Occlusion, and TMJ, and each mode specifically supports the right, left, and center area for a precise radiographic diagnosis.

SHORT RECONSTRUCTION TIME

Reconstructed images are acquired in the shortest possible time with the EzRecon GPU algorithm (18-59 sec).

USER FRIENDLY

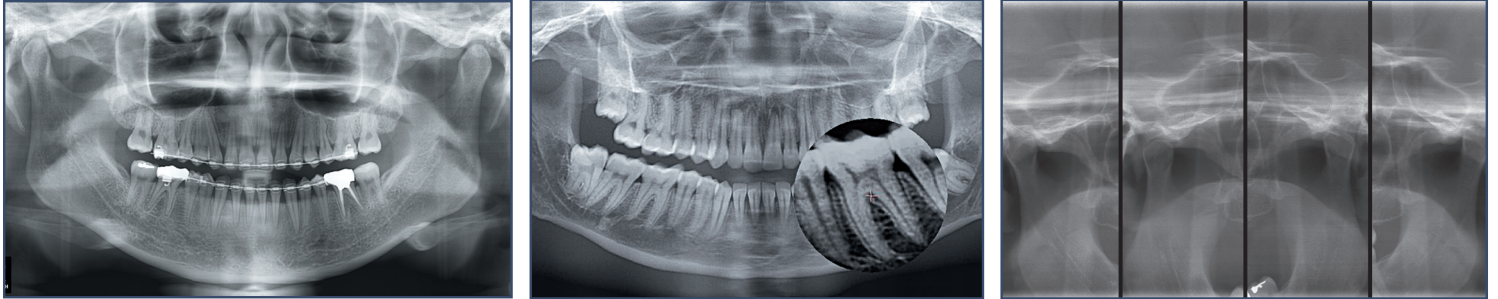
Featuring an easy-to-navigate LCD touch panel, laser-guided positioning and wheelchair-accessible footprint, any patient can be scanned comfortably in minimal time while achieving accurate results.

RXDigital

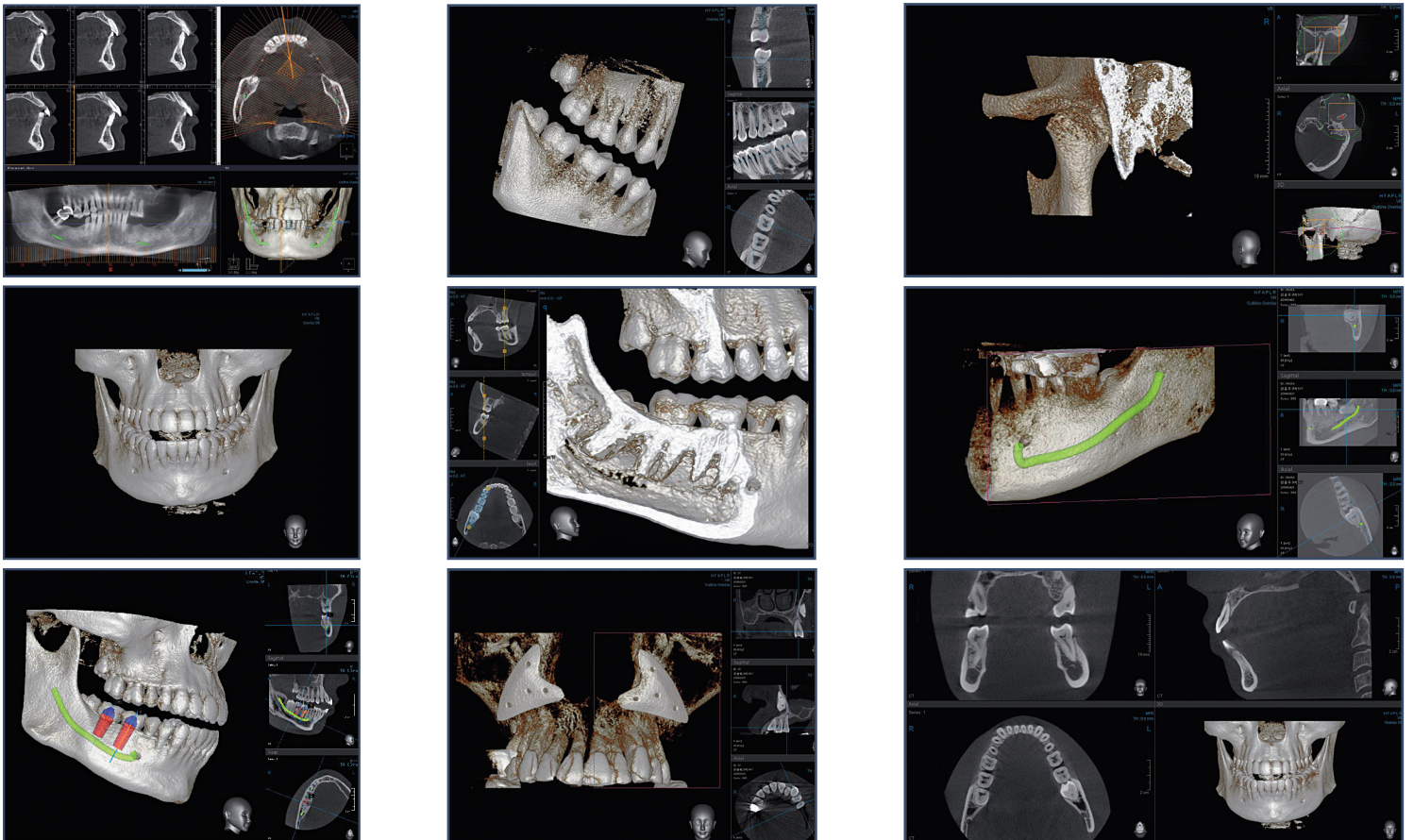
RX Soluciones de Imagenología

Dual functionality offers high-quality imaging options.

Panoramic



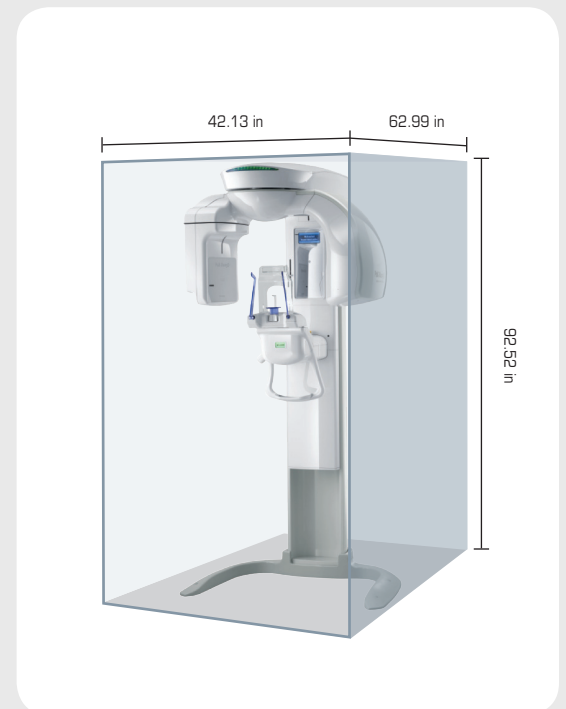
CBCT



SPECIFICATIONS

PaX-Duo3D PLUS

Function	CBCT, Panoramic
FOV Size	5x5, 8.5x5, 8.5x8.5, 12x8.5
Exposure Time	15 sec / 24 sec
Reconstruction Time	18 / 30 sec
Voxel Size	0.12 mm – 0.4 mm Changes by Field of View Size
Dimension (WxDxH)	42.13 in x 62.99 in x 92.52 in
Patient Position	Standing / Wheelchair Accessible
Generator Voltage	60 - 90 kVp
Generator Current	2-10 mA
CBCT Sensor	Flat Panel Detector
Rotating Unit Scan Angle	True 360°



About Vatech

Vatech is a leading provider of dental digital radiography and offers the most diverse product portfolio including Cone Beam CT, panoramic imaging, cephalometric, and intraoral sensors. Vatech is dedicated solely to innovative digital x-ray imaging technologies which aid doctors and their patients. Vatech develops and manufactures its own digital radiographic sensors, the most critical component of diagnostic x-ray systems.

Vatech was established in early 1992 in South Korea. Starting as an industrial equipment manufacturer, Vatech quickly realized the need to bring quality, well made dental digital radiography products to the market. In 2002 it released the first digital panoramic x-ray unit into the South Korean market. In 2005 it developed the world's first 3 in 1 dental digital radiography unit allowing Cone Beam CT, panoramic, and cephalometric functions to be used in one platform.

Today, there are currently 8 branch offices and 17 technical support centers worldwide with 11 overseas offices in 9 countries throughout the Europe, Asia and North America. Vatech America is headquartered in Secaucus, NJ with an additional branch office in Yorba Linda, CA.

RX Digital

RX Soluciones de Imagenología

RX SOLUCIONES DE IMAGENOLOGÍA S.A. de C.V.

Guadalajara, Jal. MÉXICO
CEL (33) 3499-7095 / (33) 1300-5813

www.rxdigitalschick.com

radiografiadigitalschickgdl@gmail.com
contacto@rxdigitalschick.com



/RxDigitalDental