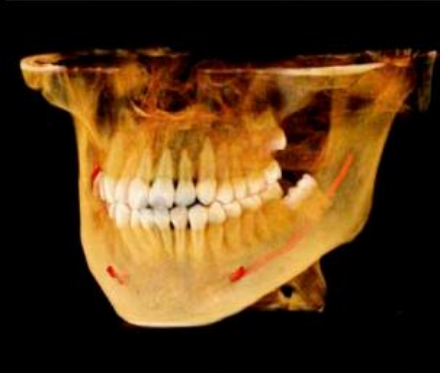
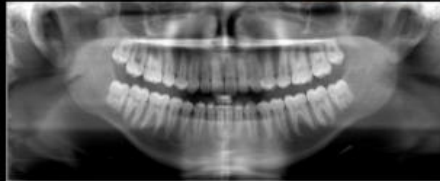
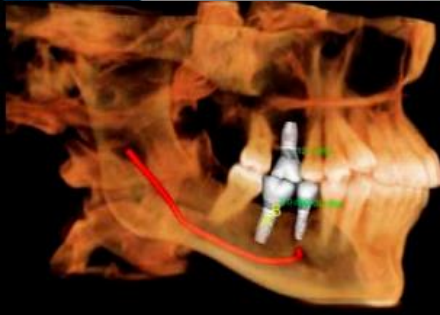


CONE BEAM 3D + 2D PANORAMIC IMAGING SOLUTION
FOR IMPLANTS & ORAL SURGERY

i-CAT Precise



i-CAT[®] Precise[™]



i-CAT[®] Precise[™]

i-CAT[®] Precise[™] is the cone beam 3D + panoramic imaging solution for general dentists and specialists who want to place and restore implants, perform surgical procedures, and simply provide better care with more confidence and efficiency and greater patient engagement than before.

Powerful Treatment Tools

More Confident Procedures & Increased Patient Engagement

With the exclusive TxStudio[™] treatment planning solution, i-CAT Precise provides powerful yet easy to use tools for placing and restoring implants, including abutments and crowns; performing guided surgery and complex extractions; and treating endodontic cases. Rich visual images come to life and engage patients in their treatment to assist in better understanding and acceptance of proposed plans. A powerful diagnostic and treatment tool, i-CAT Precise allows complex procedures to be done quickly, and with greater confidence and accuracy.

Fastest 3D Workflow

Deliver Treatment Plans in Minutes & Increase Office Efficiency

Treatment plans are done chairside or in consultation rooms in minutes with i-CAT Precise. Scans take less than 20 seconds and even complex treatment plans can be completed in a few minutes with the Tx Studio software, keeping the office moving quickly while offering excellent care and increasing patient engagement and interest in their treatment.

More Clinical Control

Manage Image Size & Dose to Provide the Best Patient Care

Flexible control over image size and low dose scanning gives you the control to tailor scans to the need of each individual patient. With i-CAT Precise, clinicians can confidently communicate to patients that they are getting a dose that is minimized for their individual treatment.



i-CAT quality in a model

that fits your practice



Implants



Oral Surgery



Periodontics



Endodontics



i-CAT[®] Difference

i-CAT[®] Precise[™] Provides You More

- More confident procedures and increased patient engagement** with powerful treatment planning tools for implants, abutments, and restorations, exclusive to i-CAT.
- A significantly more efficient and productive office** with the fastest 3D radiographic workflow available and chairside case work-ups in minutes.
- The ability to offer exceptional patient care** with detailed control over image size, multiple low dose scan modes and a built-in panoramic function.

Proprietary Tools & Technology

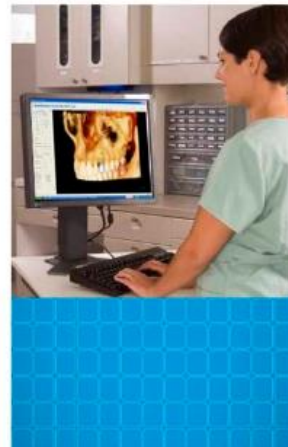
Consistently impressive image quality is delivered through proprietary tools that create high definition, low dose scans quickly and easily every time.

Capture smooth views of soft tissue, as well as crisp visualization of hard tissue and bone structures, using patented image processing technology, **Quantum iQ[™]**, for maximum detail and contrast.

i-PAN[™] makes i-CAT Precise a two-in-one system with a unique patented function that captures traditional 2D panoramic images without having to invest in two separate sensors.

Pinpoint pre-selected areas of interest with **i-Collimator** to achieve greater definition while limiting exposure to anatomy outside the field of view.

Designed specifically to maximize patient stability and accuracy of the scanning process, **Ergonomic Stability System (ESS)**, features adjustable seating controls, robust head stability and seated system design.



Leadership

i-CAT[®] Industry Leaders

Since 1992, Imaging Sciences has been a forerunner in advanced dental imaging, specifically with cone beam technology, upon its introduction of i-CAT[®] in 2004. i-CAT with integrated **Tx Studio[™]** treatment planning software continues to revolutionize the landscape of 3D dental and maxillofacial radiography, providing ultimate efficiency and flexibility for maximum clinical control.

Now, **i-CAT[®] Precise[™]** brings the power of award-winning i-CAT imaging to more practices with efficient and total treatment tools.



The 3D Imaging Institute is the only entity of its kind dedicated to **ongoing education** of dentists and specialists to enhance planning and treatment through the latest in cone beam technology. Our network of educators includes highly regarded leaders in specialty fields who have **extensive i-CAT experience**.

This industry-leading educational program is the first to collaborate with Board Certified Oral and Maxillofacial Radiologists to design and deliver a curriculum on cone beam imaging by dentists for dentists.

Commitment to continuing education for customers is reflected in the extensive programs offered **pre- and post-installation**, including online tutorials, webinars, regional classes, custom on-site training, annual Users' Meeting and International Congress on 3D Dental Imaging.

Learn more about exclusive training sessions and educators at i-CAT3D.com.



Implants

Achieve More Confident Outcomes with Powerful Tools

i-CAT[®] Precise[™] gives you the confidence to accurately plan an entire implant and restorative treatment while engaging your patients with rich 3D visuals created chairside in minutes.

Exclusive **Tx Studio[™]** software is the total solution for implant planning, including abutments and restoration design.

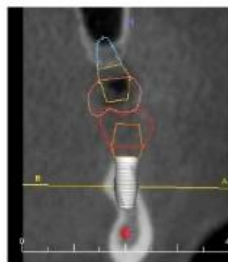
Analyze and measure exact bone structure and tooth orientation with high resolution, volumetric images. Collect critical data and measurements such as buccolingual dimensions, concavities and bone height. In the case of multiple implants, calculate perfect positioning.

Map an entire course of treatment from surgical placement of the implant and abutment, all the way to final restoration. An extensive library of implant templates affords best possible selection of suitable implant type, size, location, and angulations prior to surgery.

Engage patients with visuals that illustrate the benefits of the proposed treatment plans so they feel comfortable moving forward.



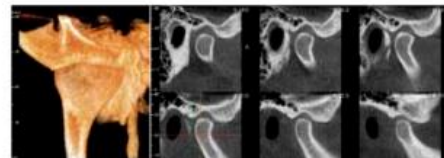
Visualize Implants within the Bone



Cross-Sectional Visualization



Full Implants, Abutments, and Restorations Simultaneously in Tx Studio[™] Software



Corrected Angle Views to evaluate for TMJ



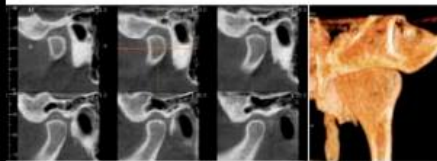
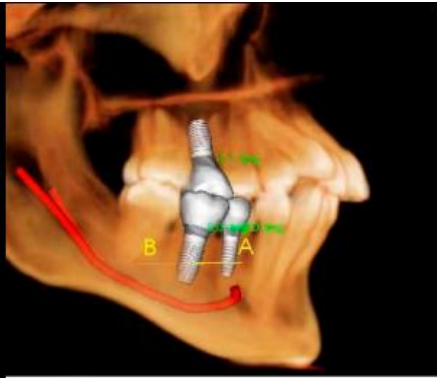
3D View to Visualize Nerve Position for Implant Placement

Accuracy & Confidence

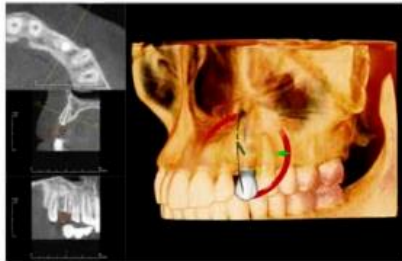
Move from Scan to Plan to Actual Treatment with Surgical Guides

Execute treatments with more confidence and efficiency and less complications with surgical guides ordered directly through the included Tx Studio™ software.

Plan an implant with stock or custom abutments and a final crown in minutes. Deliver better results by ensuring optimal placement of both implant and restoration, as they relate to each other, as well as bone quality and occlusion.



3D Panoramic Views



Restoration-Oriented Implant Planning



SurgGuide

Create Surgical Guides and Precise Outcomes

Combine the system's fast scan workflow and unique open software architecture to expand implant planning capabilities. i-CAT™ Precise™ is universally compatible with all leading surgical guide providers, including SimPlant™ and SurgGuide, NobelGuide®, SICAT™, iDent™, and gives the convenient ability to order guides from Anatomage™ directly through the included Tx Studio software.

Oral Surgery

Confidently Plan Surgical Treatments Faster Than Ever Before

Delivering the ideal field of view for oral and maxillofacial surgery, i-CAT™ Precise™ captures both arches and temporomandibular joints in less than 10 seconds, creating a complete blueprint for successful surgical treatment.

Accurately measure each patient's unique bone characteristics, assess bone density, lesions, changes to the jaw and jaw deformities, and oral

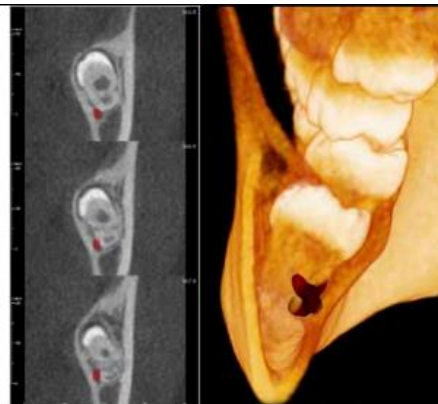
pathologies such as cysts, tumors and disease to avoid potential surgical complications.

Determine precise tooth position to visualize impaction within the alveolar bone, location relative to adjacent teeth, proximity to vital structures, such as the nerve canal, sinus walls, and cortical borders. Reveal anatomical conditions not seen in 2D x-rays.

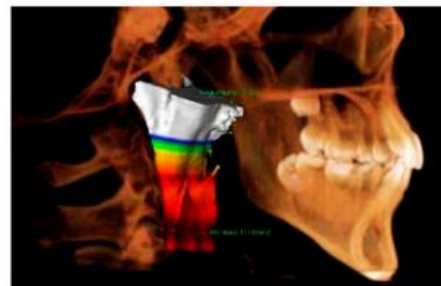
Eliminate delays in diagnostic time and reduce dose exposure by avoiding hospital CTs. i-CAT Precise conveniently provides immediate access to patients' full diagnostic information in just seconds so that you may begin surgical planning at once using integrated Tx Studio™ software. High definition 3D i-CAT Precise scans, together with guided surgical techniques, enhance individual care and increase accuracy for improved surgical outcomes.



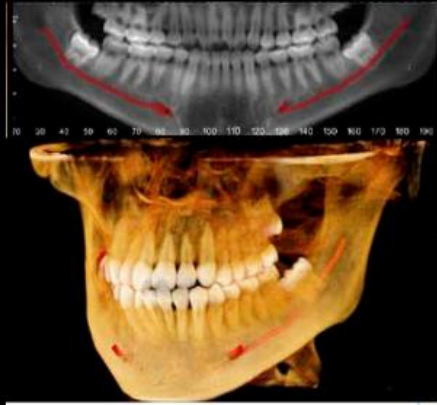
Identify Root Fractures



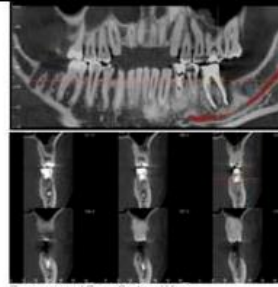
Visualize the Relationship Between Impacted Tooth Roots and Nerve Prior to Extraction. Identify Tooth Position, Relation to Other Teeth and Roots, and Pathology.



Assess Airway Volumes in Seconds



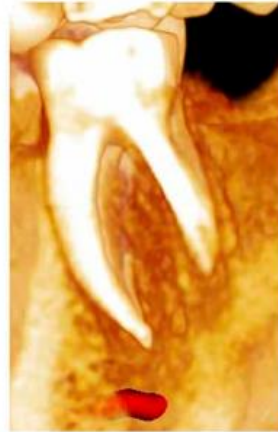
View Exact Tooth Position in 3D



Panoramic and Cross-sectional Views

Endodontics

Assess for endodontic retreats and evaluate for loss of bone and apical lesions.



Zoom in on 3D View of Roots

Flexibility



Put Patient Health First with Image & Dose Control

Utilize the systems built-in i-PAN™ traditional 2D panoramic imaging when 3D information is not required. i-CAT Precise's two-in-one functionality is a convenient benefit for dental offices that desire both 2D and 3D imaging.

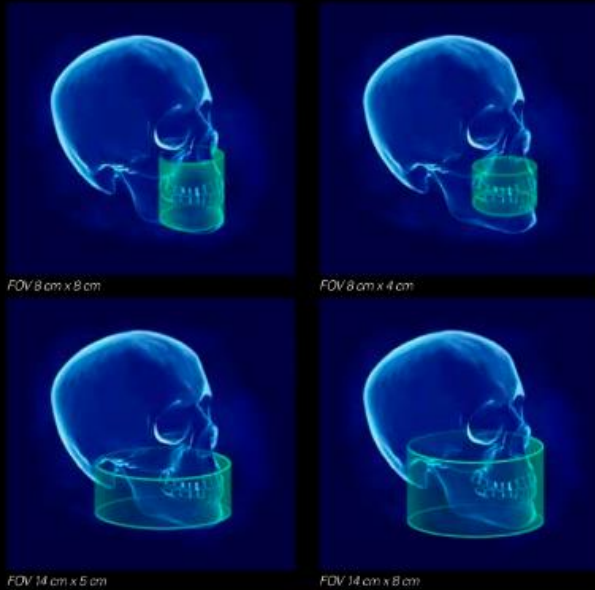
Flexibility to quickly capture a range of image sizes to fit your needs. Multiple low dose scan settings to provide responsible patient-focused care.

With i-CAT® Precise™ you have the flexibility to easily capture a range of desired scans to fit your specific need. Choose any height from 8cm to 2cm to narrow the image and the applied dose to only the anatomy of interest.

Preset fields of view simplify the imaging process to more efficiently focus on capturing the anatomy to fit each patient's unique case. Target specifically desired views including maxilla or mandible single arch, both arches, and temporomandibular joints.

Customize the scan so patients' anatomy is not exposed outside the selected field of view. Choose from four scan times to control image resolution and dose to the patient – 4.8, 8.9, 12.6 and 23 seconds.

Capture information critical to treatment through a clinically responsible approach that controls radiation exposure to the patient.



FOV 8 cm x 8 cm

FOV 8 cm x 4 cm

FOV 14 cm x 5 cm

FOV 14 cm x 8 cm

Control



Both Arches - 8 cm x 8 cm



Collimated Mandible - 14 cm x 5 cm



Collimated Maxilla - 8 cm x 6 cm



Both Arches Plus TM Joints - 14 cm x 8 cm



i-PAN Traditional 2D Panoramic Imaging

Tx STUDIO

Engage Patients & Create Treatment Plans in Minutes

Powerful tools designed for speed and ease of use

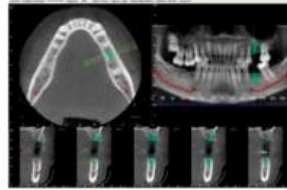
Create complete treatment plans in minutes with patients chairside or in a consultation room. Exclusive Tx Studio™ software powered by Anatomage® for i-CAT® Precise™ provides tools for implants, abutments, restorations, surgical procedures, endodontics, TMJ and airway assessment.

Tx Studio provides a powerful suite of treatment tools for general and specialty dental practices to provide the best patient care.

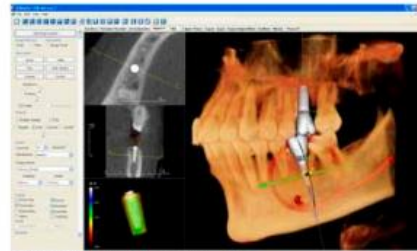
-  Distance measurements
-  Panoramic arch
-  Quick access 3/4 view
-  Implant planning
-  Quick access front view
-  TMJ positioning
-  Quick access right view
-  Move image
-  Axial top view
-  Report creator
-  Airway measurements
-  Zoom



Easily Select Implant Site



Axial, Sagittal, and Coronal Views



Evaluate Bone Density When Planning Implants



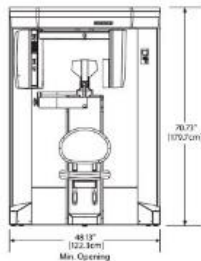
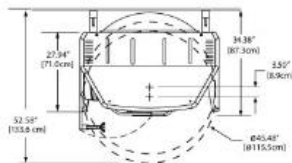
Plan Restorations in Addition to Implants and Abutments



Total Control Over Visualization and Transparency to View the Anatomy in Various Settings - Teeth, Bone, Soft Tissue

page 14

Features & Specifications



Get the free mobile app for your phone
<http://gettag.mobi>

Anatomage®, SmartForm®, SurgiGuide®, NobelGuide®, SCAT, and Dento™ trademarks are the property of their respective owners.

Functionality

Easy-to-operate push button controls and computer workstation operation

Dose Control

Four adjustable scan times for resolution and dose control: 4.8, 8.8, 12.6, 23 seconds
i-Collimator electronically adjusts the field of view to limit radiation only to the area of scanning interest

Included Viewing Software

Standardized DICOM 3 compatible output for sharing with third party applications

Practice management compatible (see website for up-to-date list)
PACS interface through DICOM standard
Reporting features

Included Treatment Software

Tx Studio™ treatment planning software
Implant planning, restoration and abutment planning, airway volume analysis, superimposition tool, nerve canal marking, temporary anchorage device planning

Imaging

Included Amorphous Silicon Flat Panel Sensor with CsI scintillator for optimal signal to noise ratio and clearer images

Included Quantum IQ advanced soft tissue filter for noise reduction of images and improved low contrast detectability
Included Extended Diameter Scan for capturing TM joints
Included i-PAN for traditional 2D panoramic images

Design

ESS (Ergonomic Stability System) with seated chair and head support that reduces patient movement and improves image quality
Small in-office footprint

Support

Dedicated 3D technical support team, and customer service
24/7 phone support
Field Support Product Specialists and in-office support

Training

1.5 day in-office training is included with every purchase of a new i-CAT® Precise™ 3D system
Continuing education through the 3D Imaging Institute

SPECIFICATIONS

Focal Spot	0.5 mm
Voxel Sizes	0.4, 0.3, 0.25, 0.2, 0.125 mm
Type of Sensor	Amorphous Silicon Flat Panel
Line Pairs	14 lp/cm at 0.2 voxel scan at the object
Grayscale (BIT)	14 bit
Shades of Gray	16,384 shades of gray
Fields of View	8 cm (d) and 14 cm (d) Fully-adjustable height between 2 cm and 8 cm
Scan Times	4.8 sec (3 and 4 voxel, Standard Mode) 8.8 sec (3 and 4 voxel, Standard/EDS Mode) 12.6 sec (125, 2 and .25 voxel, Standard Mode) 23 sec (125, 2 and 25 voxel, Standard/EDS Mode)
Reconstruction Times	less than 20 sec - Standard Mode less than 95 sec - EDS Mode
File Sizes	less than 21 MB - Standard Mode less than 58 MB - EDS Mode
Software	Tx Studio™ treatment software Free i-CATVision™ viewing and sharing
Footprint	48" wide x 48" deep

To learn more about the i-CAT® Precise™ 3D Dental Imaging System contact your Henry Schein representative or call Imaging Sciences at (800) 205-3570.

page 15

