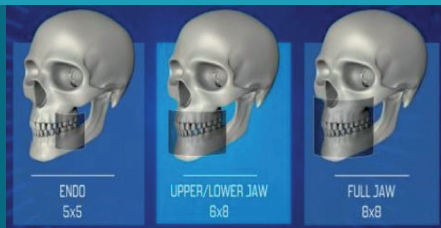




FROM YOUR VALUE LEADER

Multi-FOV for 3D acquisition



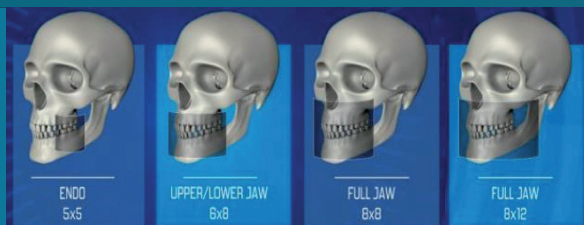
Small FOV

5x5 ENDO

Small FOV optimized local diagnostics, such as single implant planning, extraction of the 3rd molar, and endodontic procedures. It keeps the patient's exposure dose to a significantly reduced level.

6x8 & 8x8 - UPPER/LOWER JAW

Allows for display of the maxilla or mandible.



Medium FOV

8x12 - FULL JAW

Covers the whole jaw, including mandible, maxilla, and part of the maxillary sinus.



Large FOV

8x16 - EXTENDED JAW

Allows for display of the mandible, maxilla, nasal passages, sinus, and both TMJs in the same image.

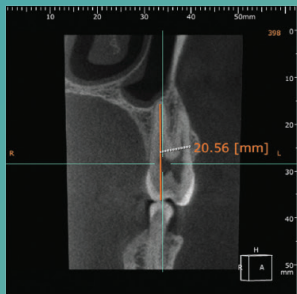
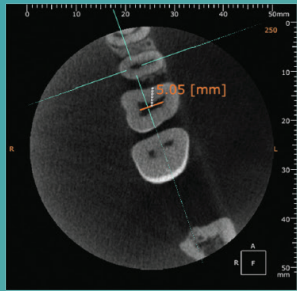
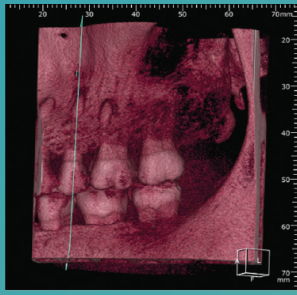
13x16, 18x16 & 23x16 - SKULL

Ideal for orthodontics, it allows for diagnostics on the whole maxillofacial region.

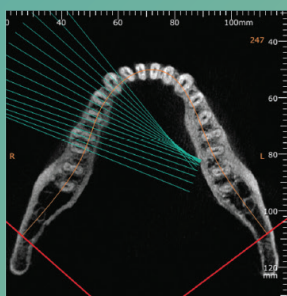
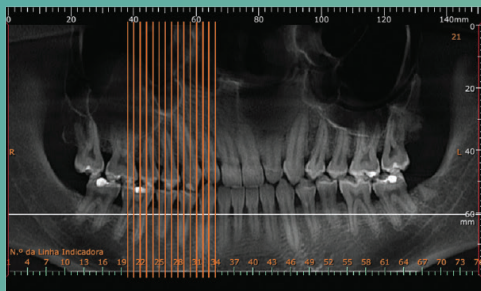
3D Software

OnDemand 3D by Cybermed

- Implant Planning/Full Implant Library
- OnDemand 3D Streaming
- 3D Zoom
- Convert to STL
- Segmentation
- Airway Volume Measurement
- Nerve Tracing
- And much more!



▲ Endo



▲ Jaw



▲ Skull

Broad, flexible and innovative

The new **Encompass 3D** now features the best in high definition in various FOV (Field of View) options. More breadth and flexibility in diagnostics with a uniqueness that only Panoramic offers.

Cone-Beam System

The Cone-Beam Volumetric Computerized 3D System allows for location and reconstruction of 3D images with precision, clarity, and reduction of the radiation dosage.

4 Definition options

For each volume (FOV), there are four definition options, automatically adjusting the parameters, easily selected on a user-friendly display.

Low Dosage	Standard	High Definition	Ultra High Definition
Reduced dosage, in that a lower resolution is acceptable	Dosage optimized for diagnostics in general	Offers clear images and allows for more clear diagnostics	Offers clear images and allows for more clear diagnostics with ultra resolution, especially used for endodontic procedures

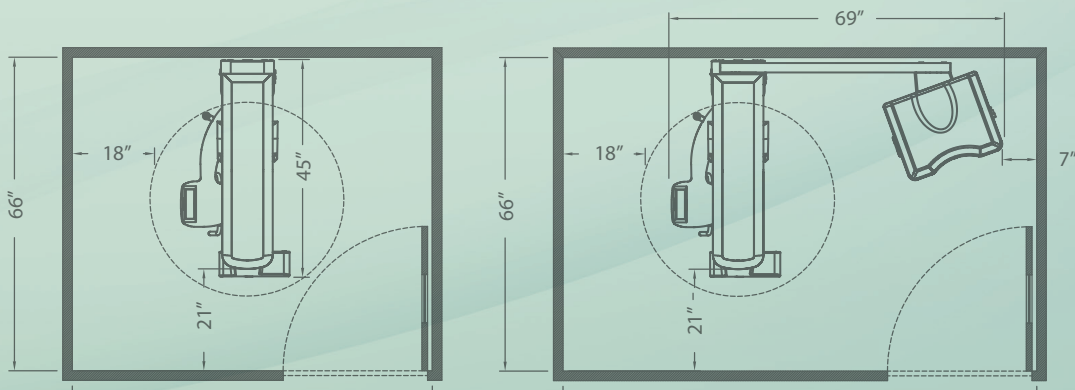
Low Dosage

All of the FOV sizes offer the option of capturing a low radiation dosage, reducing the exposure time and ensuring the capacity for certain clinical diagnostics.

Encompassing Care Package

With the purchase of any Digital Imaging System from Panoramic, our customers have access to one of the most comprehensive support and service packages in the industry. We call it the Panoramic Platinum Care Package.

Backed by years of trust and experience, Panoramic stands alone in its commitment to providing you with years of worry-free maintenance and service. Based on valuable feedback from our customers, we have developed our Panoramic Platinum Care Package to encompass all the valuable support options that you need, when you need them most.



Machine Height - 68" to 96"




panoramicTM
www.pancorp.com | 800-654-2027
 /panoramiccorporation  @pancorp

Panoramic Corporation
 4321 Goshen Road
 Fort Wayne, IN 46818
 800-654-2027
www.pancorp.com