



ANSER X1

NEXT-GEN THERMAL INKJET

NEXT-GEN THERMAL INKJET

The ANSER X1 is designed to handle all ANSER thermal inkjet cartridges, giving you a complete solution for all coding requirements on two lines.

1 PRINTER, 2 PRODUCTION LINES. RE-THINK TIJ.

The ANSER X1 is capable of controlling 2 different production lines simultaneously, providing you operational efficiencies and cost saving advantages.

ROBUSTNESS COMES STANDARD

Power, flexibility and reliability under any production environment, each controller comes IP66 rated with total dust ingress protection, and is capable of withstanding high-pressure water during production washdowns.

EASE OF USE

The user-interface design is not only simple, but intuitive. Virtually eliminate the need for user training and say goodbye to operation mistakes!

SIMPLE YET POWERFUL

A powerfully customizable access control & status monitoring system, which provides the ability to prevent errors and meet requirements.

INK PORTFOLIO FOR ANY SUBSTRATE

A versatile ink selection of TIJ cartridges, from general purpose to specialty inks, to meet your industry requirements.

[specs on next page]



For additional information or to speak with a specialist:

www.inkjetinc.com

1.800.280.3245



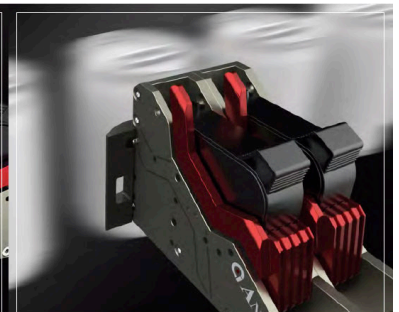
High-Speed Coding
300m/min high resolution coding



Large-Image Coding
2-inch print height



Non-Contact Coding
12mm printing distance



Non-Stop Coding
Cartridge replacement without downtime

ANSER X1

NEXT-GEN THERMAL INKJET

SPECS



Specification-Controller

Maximum number of printhead	2	Communication Protocols	TCP IP/UDP, Modbus TCP, and ANSER U2 Net protocol
Display	7" Color LCD Capacitive Touchscreen (800x480 px) (Compatible with most medical & industrial gloves)	Power Input	AC 100V-240V, 50/60Hz (90Watt)
Printing Functions	Static Data: Text, Logo, Dynamic Data: String, Shift, Counter, Production Date, Expiration Date	I/O Ports	USB 2.0 connector x 2 RS-485 & RS-232 connector x 1 RJ-45 connector x 1 Digital I/O connector (1 IN & 5 OUT pins) Encoder x 1 Photocell x 1
Fonts & Size	Standard: Arial, Other True Type Fonts can be loaded		
System Language (add input lang.)	English, Spanish, German, French, Italian, Traditional Chinese, Simplified Chinese, Japanese, Korean, Russian, Portuguese, Turkish, Hungarian, Slovak, Czech, Swedish, Romanian, Serbian, Bulgarian, Polish	Barcode Type	EAN8, EAN13, EAN14, EAN128, UPCA, UPCE, CODE39, CODE128, ITF14 (SCC-14), NVE18 (SSCC-18), INTER25, CODABAR, PDF417, DATAMATRIX, QR CODE, GS1 (DATAMATRIX, DATABAR EXP, DATABAR, QR CODE), D'MATRIX 8x32, DUN14, Aztec Code
Dimensions & Weight	291 x 142 x 52mm / 2.12 Kg	Operating RH.	0%-90%, Non-condensing
Operating Temp.	0-40 Celsius	IP Rating	IP66 housing

Specification-Printhead Type H

Printing Technology	High Resolution Thermal Ink Jet	Operating Temp.	0-40 Celsius
Print Height	Single Print Head: 12.7mm (0.5 inch) or 25.4mm (1.0 inch)	Operating RH.	0% - 90%, Non-condensing
	Stitch Print Head: 12.7mm x 2 @ 25.4mm (1.0 inch) 25.4mm x 2 @ 50mm (1.97 inch)	Dimensions & Weight	82 x 30 x 210 mm / 0.46kg
Printing Resolution	600 x 600 DPI	Printhead Cables	Standard: 2M Optional: 5M, 10M, 15M
Printing Speed	30m/min @ 600 DPI 300m/min @ 60 DPI		
Printing Distance	6 mm		

For additional information or to speak with a specialist:

www.inkjetinc.com or 1.800.280.3245

