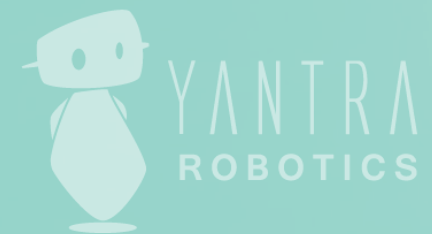


Start
Building!

Pogo Stick



Pogo Stick



Description: A Cam changes the input motion, which is usually rotary motion (a rotating motion), to a reciprocating motion of the follower (part resting on top of it).

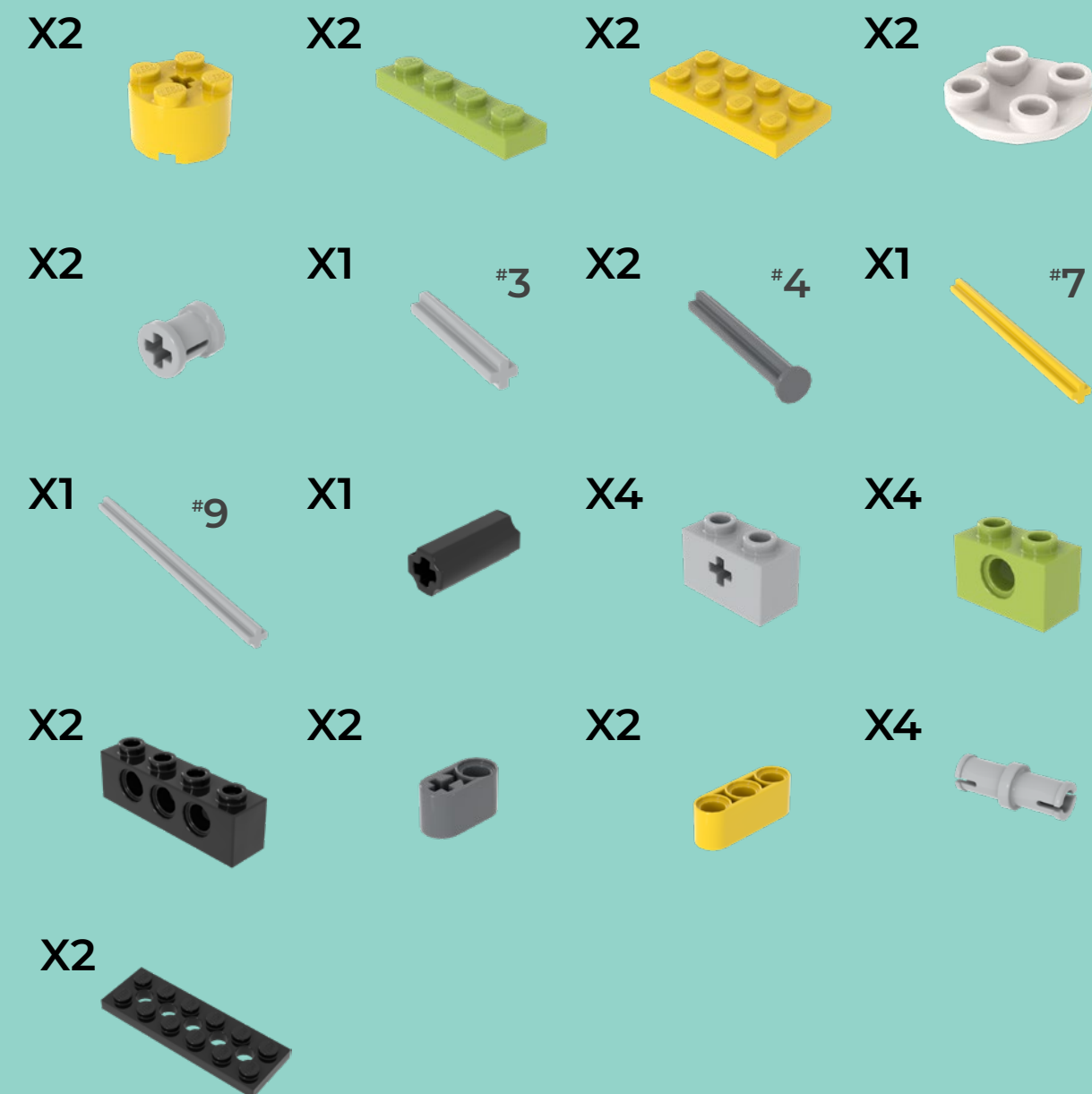
We are using a lift arm with an oblong shape. Experiment by changing the directions of the cam/lift arms to create different up and down patterns.

ViNee Set: Essential

Learn:

- Cam
- Lift arm

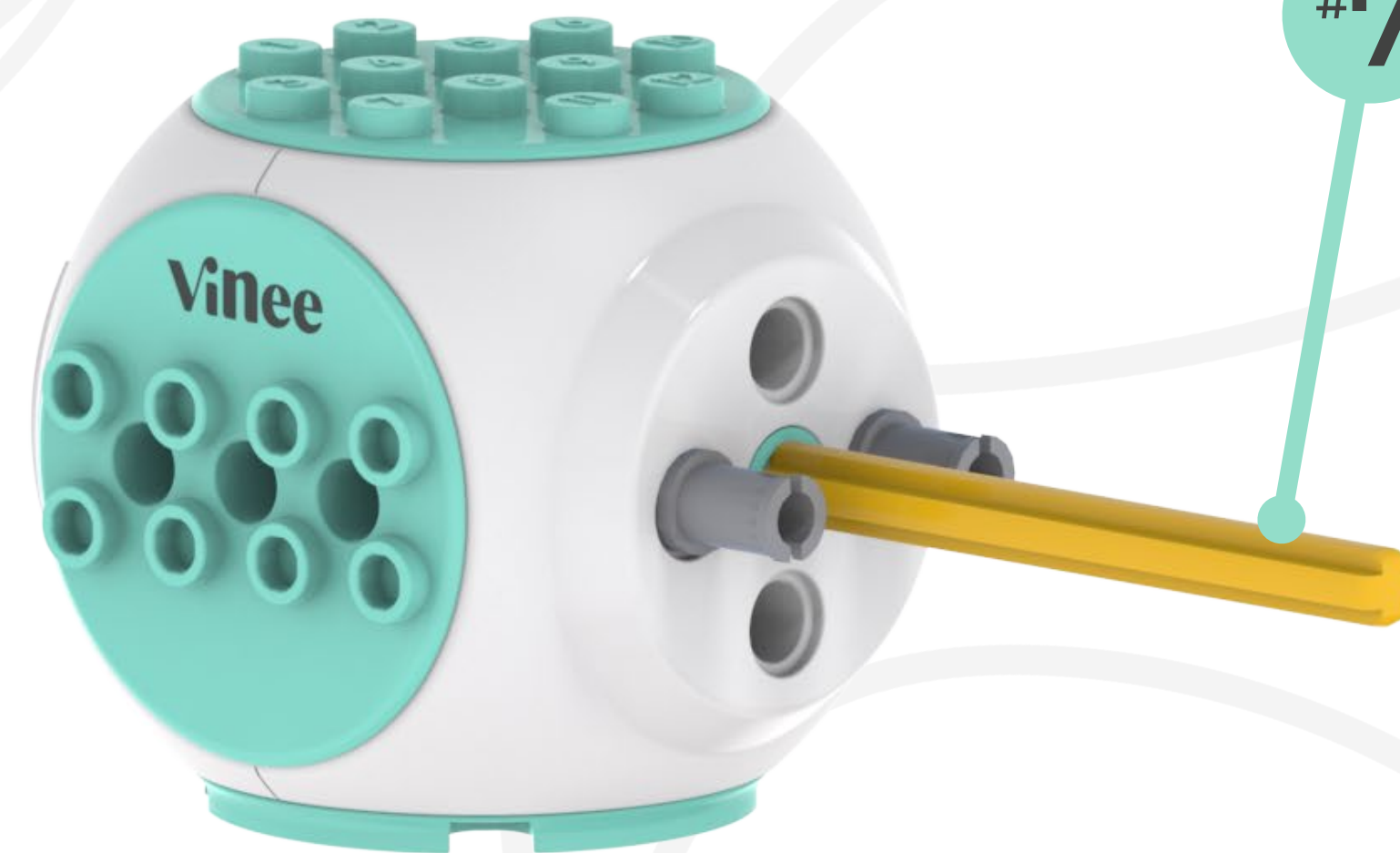
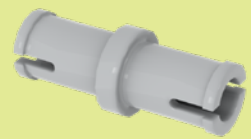
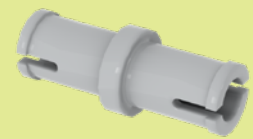
Parts In This Build



1

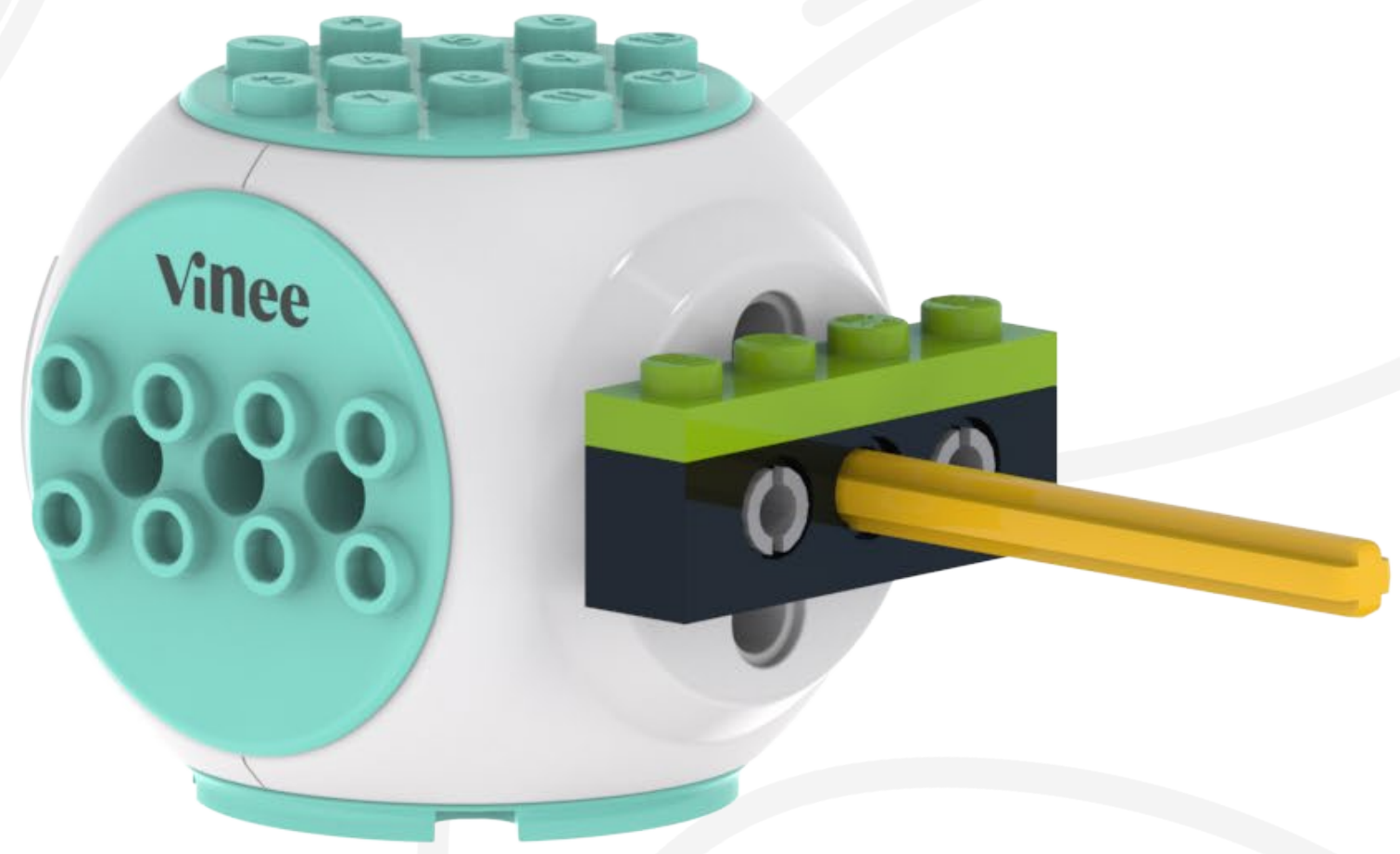
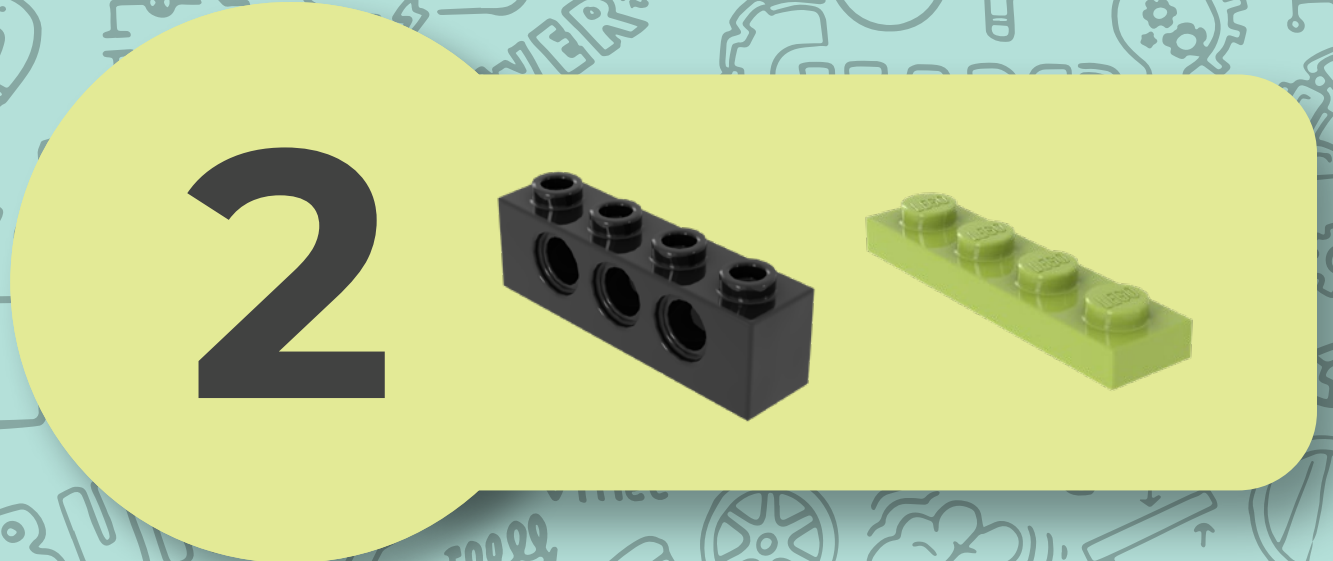


#7

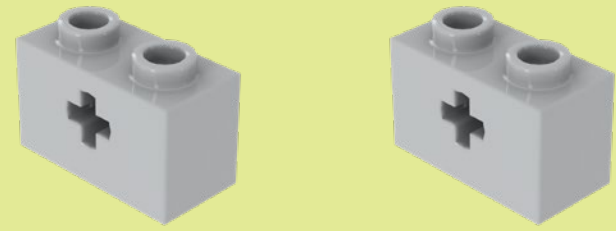


#7

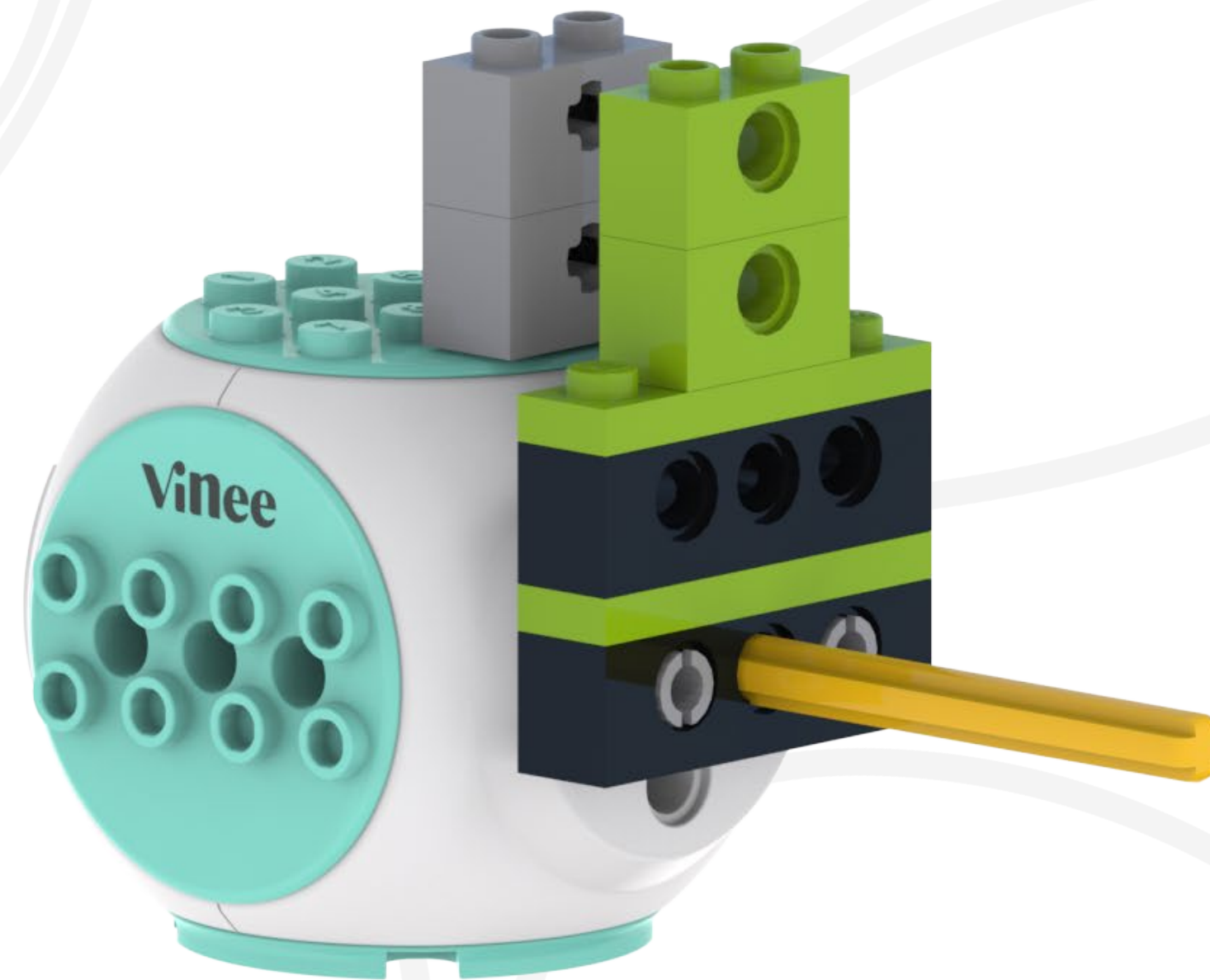
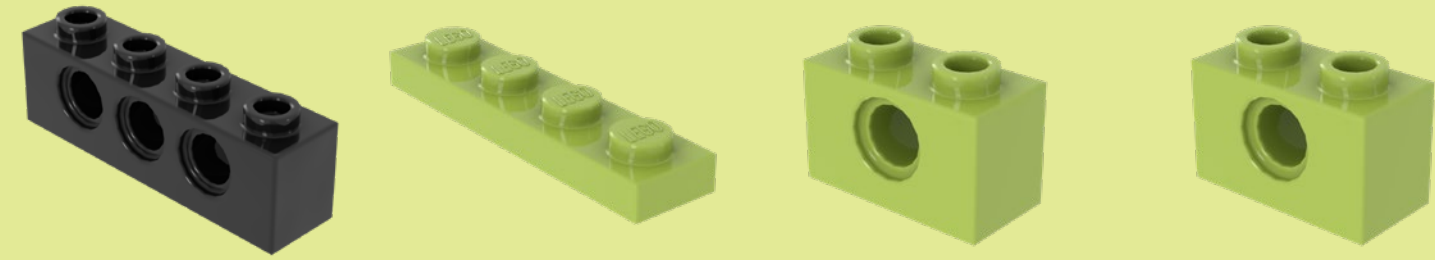




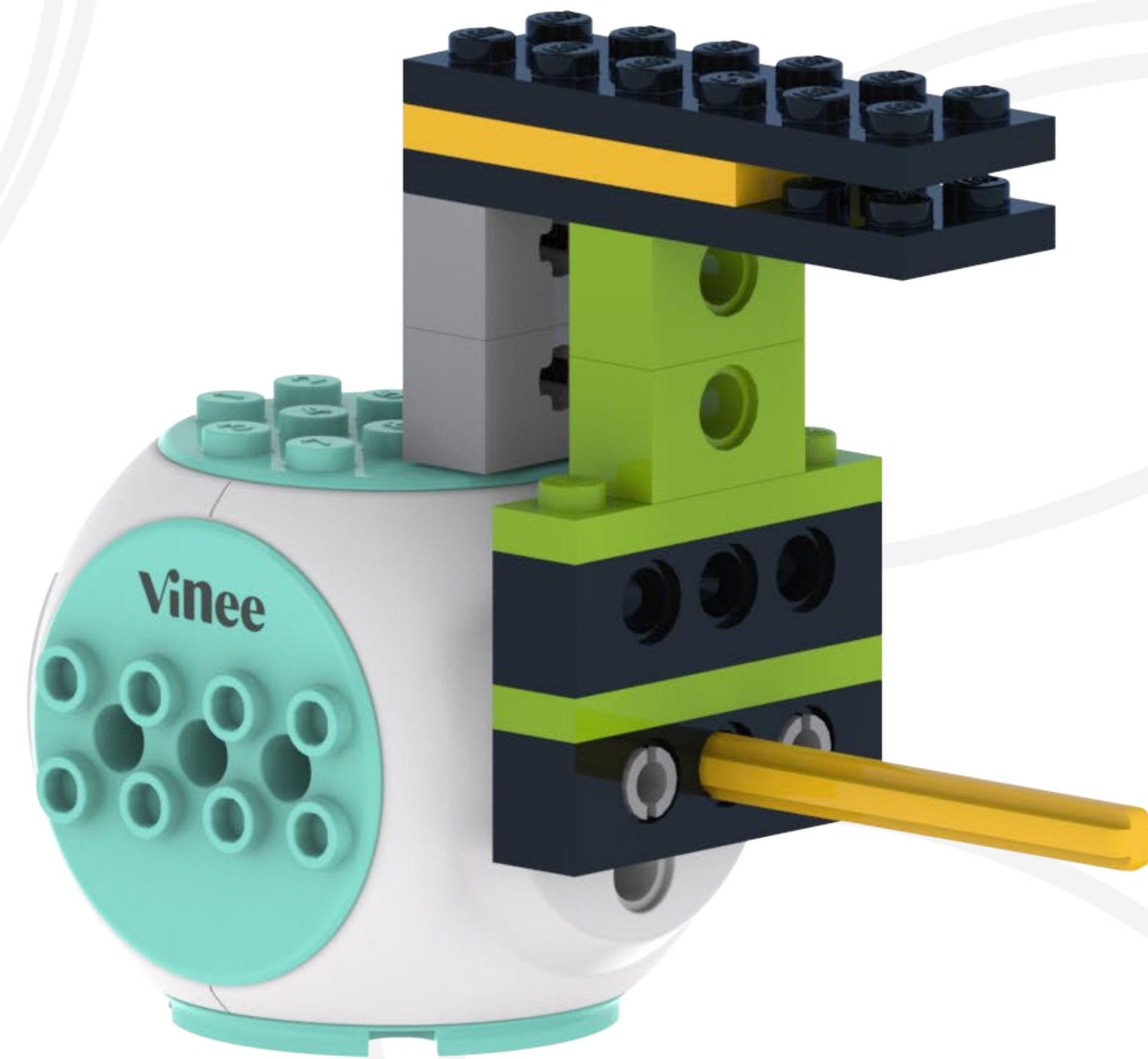
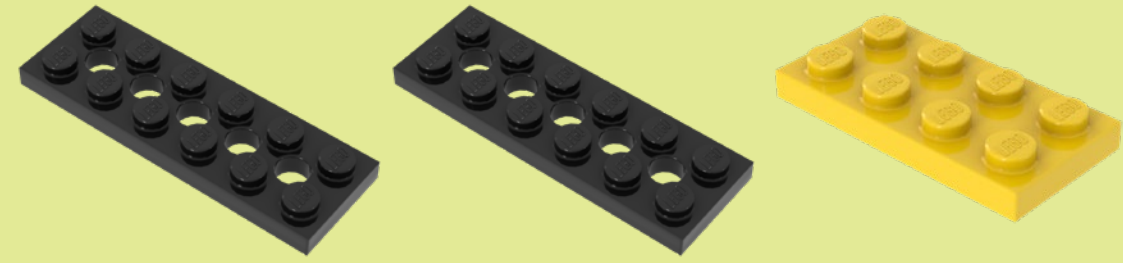
3



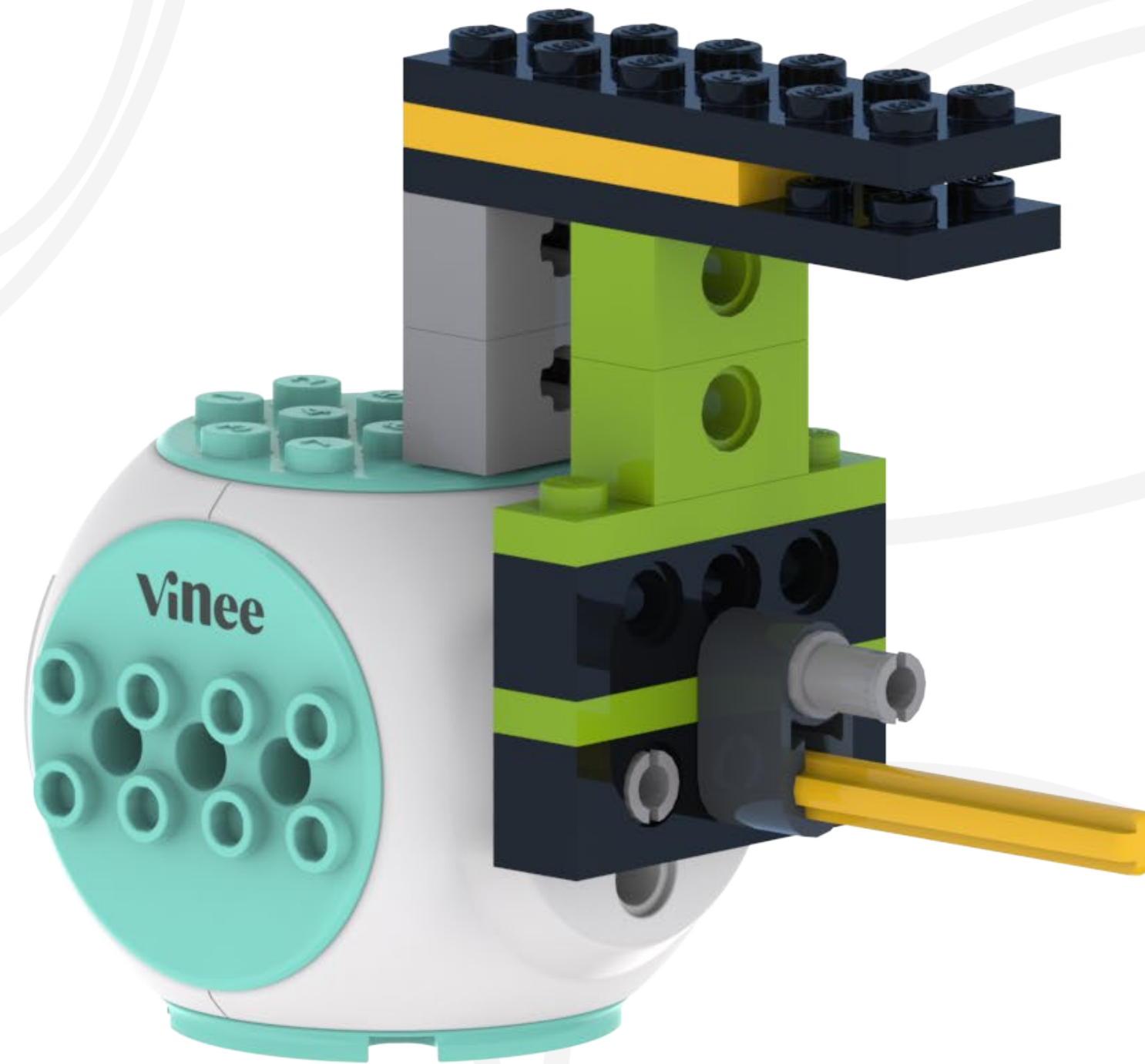
4



5



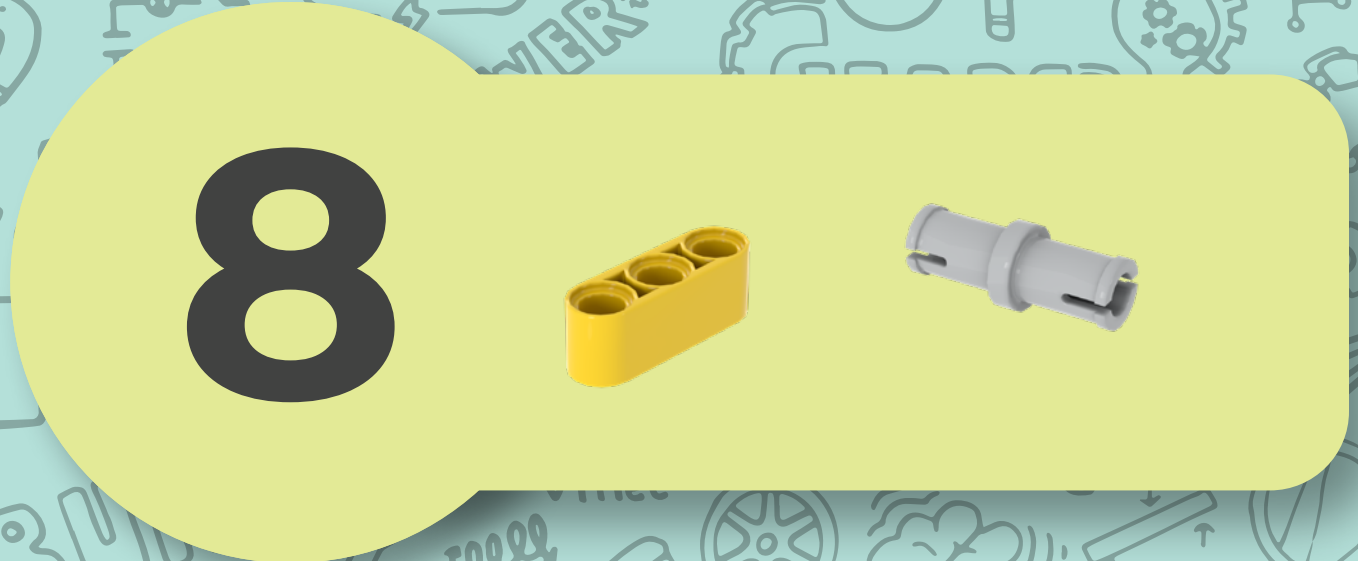
6



7



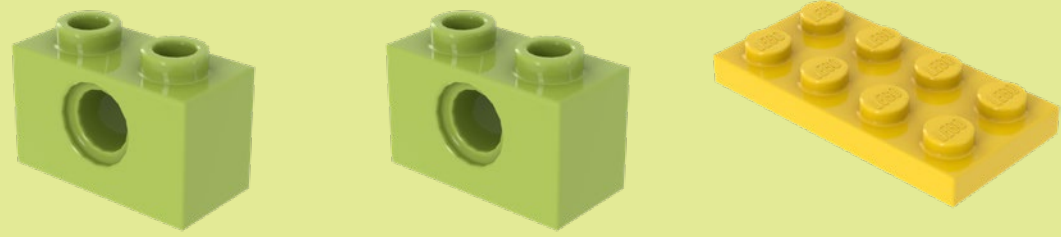
8



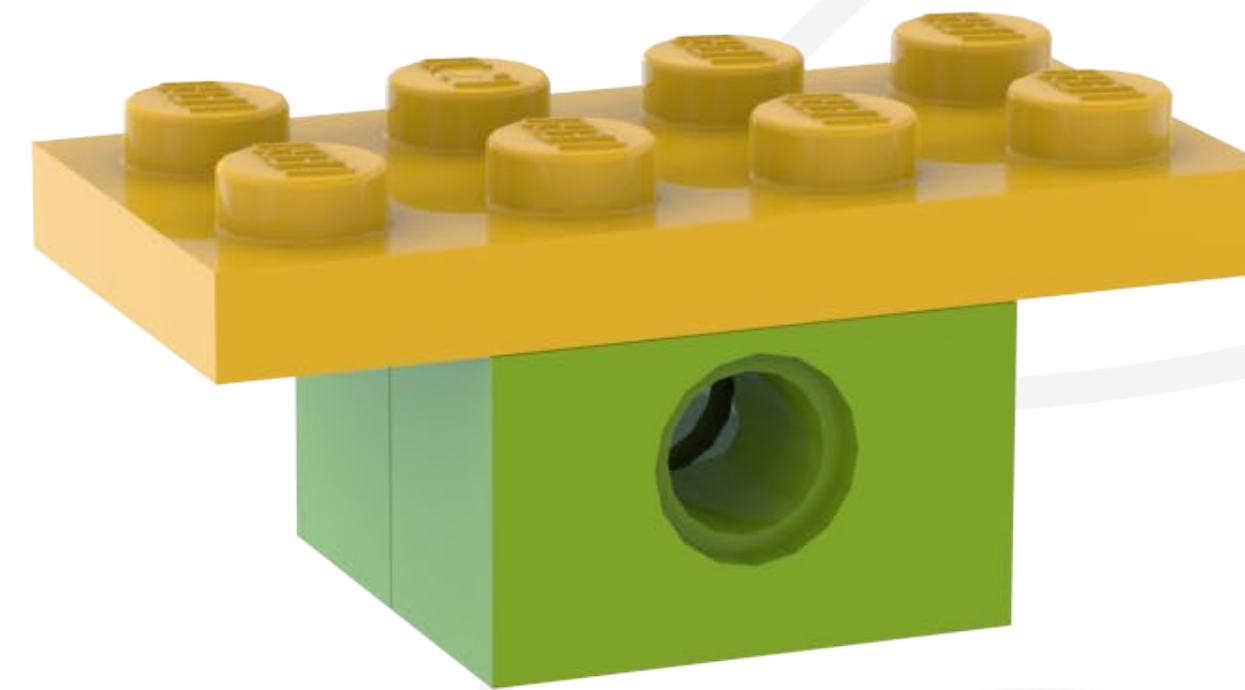
9



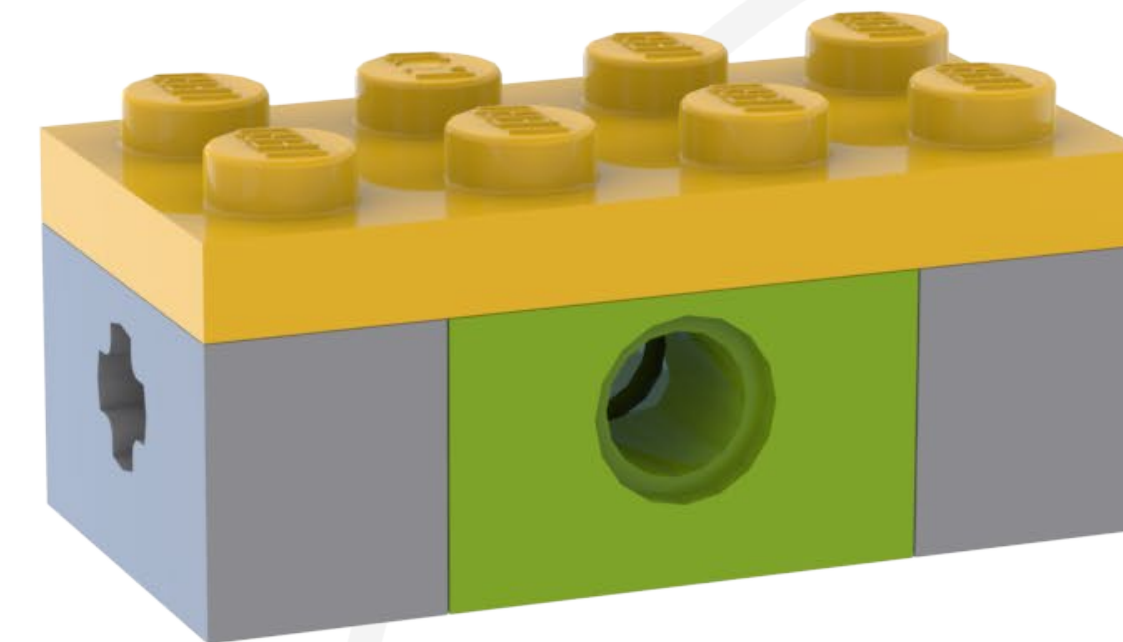
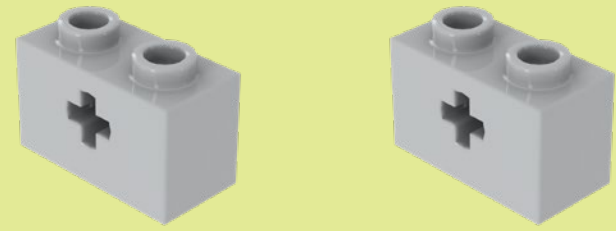
10



New Assembly



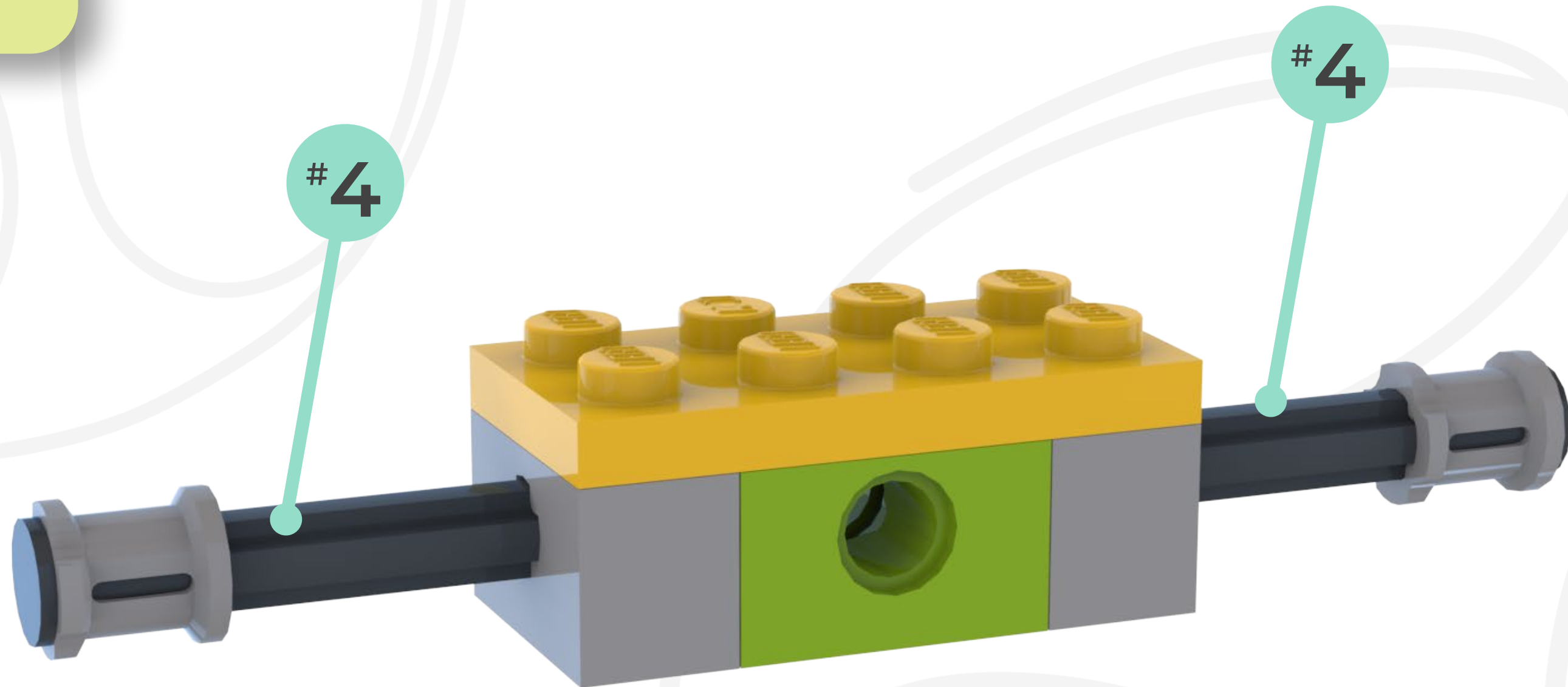
11



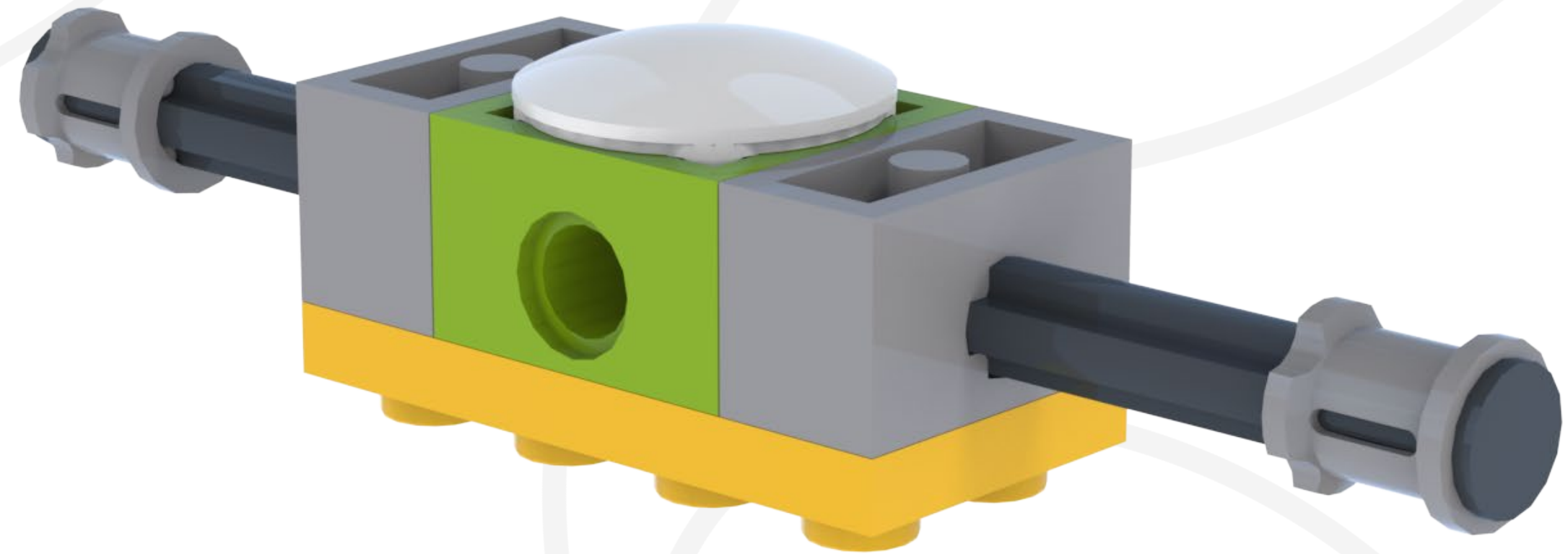
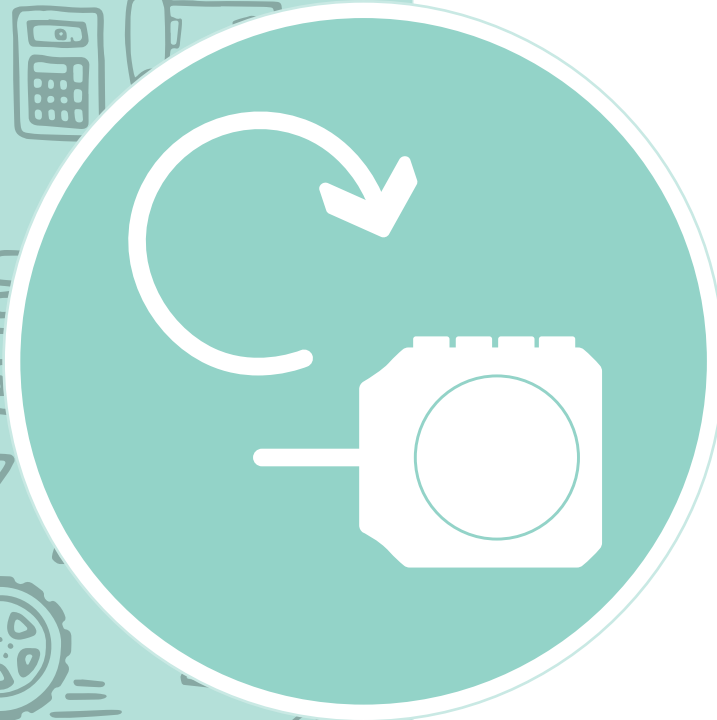
12

#4

#4



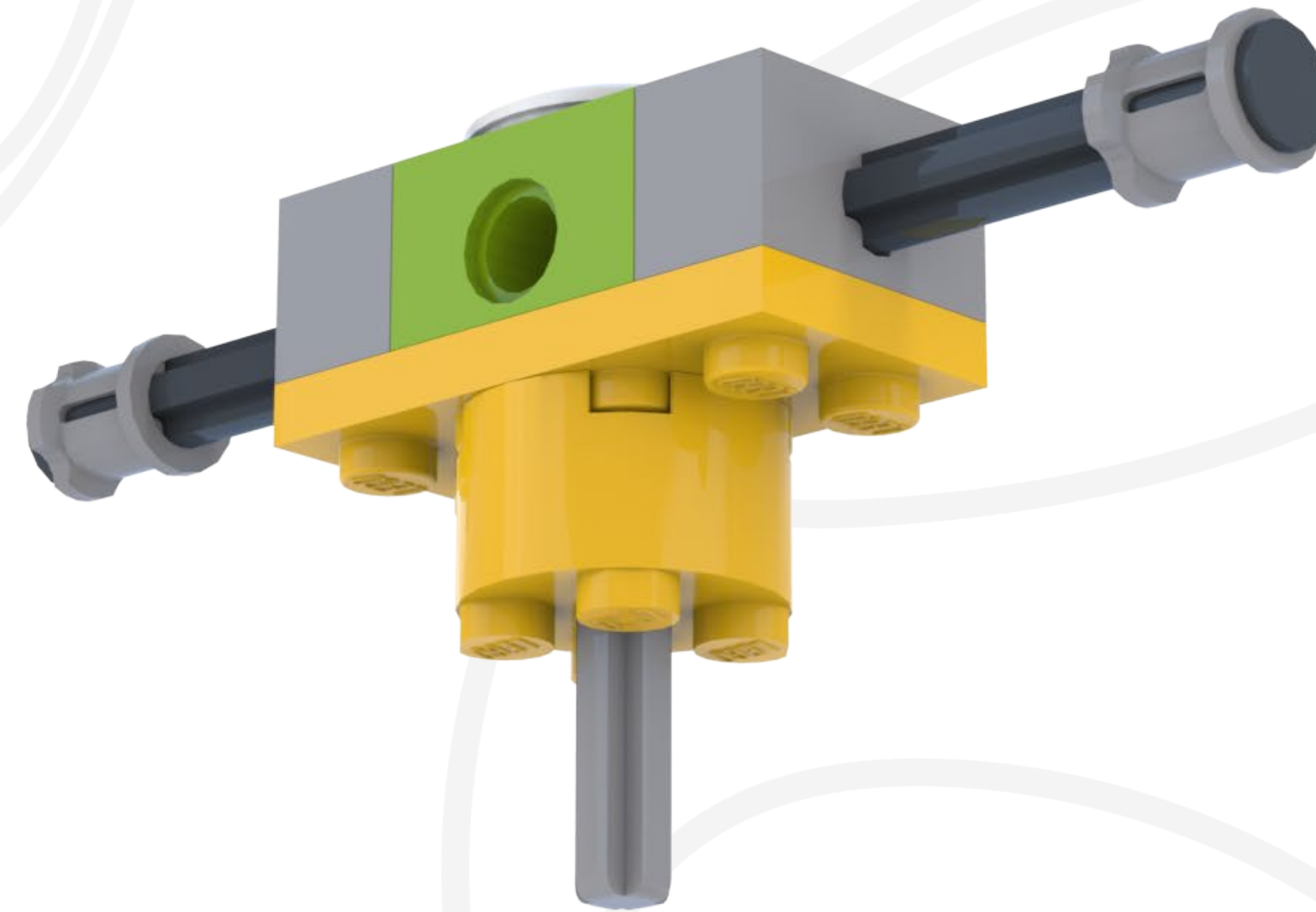
13



14

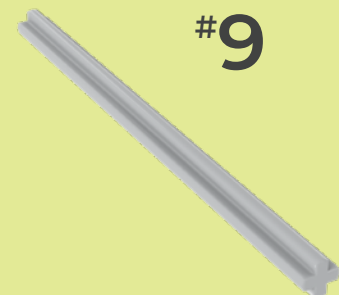


#3



15

#9



#9



16




Attach

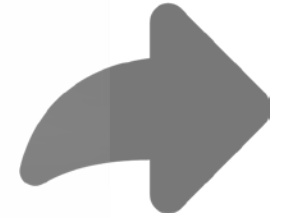
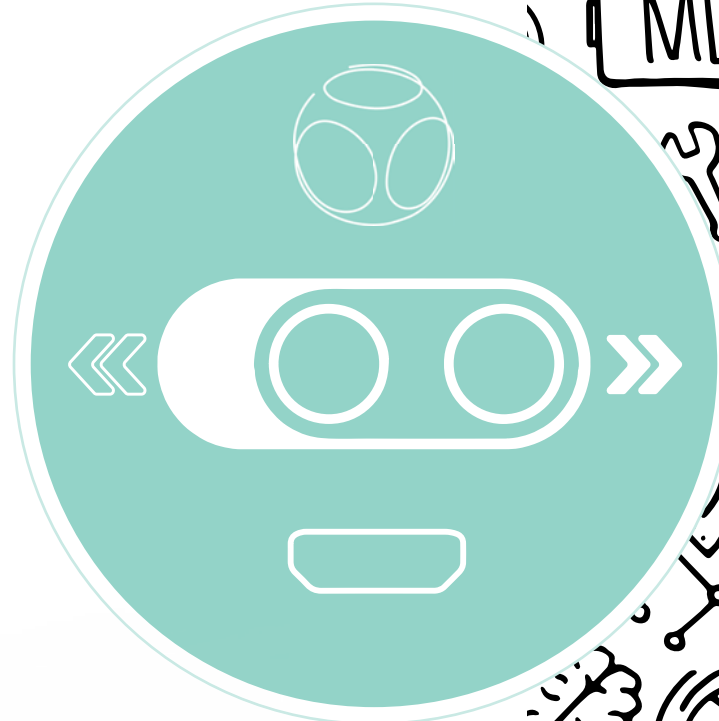
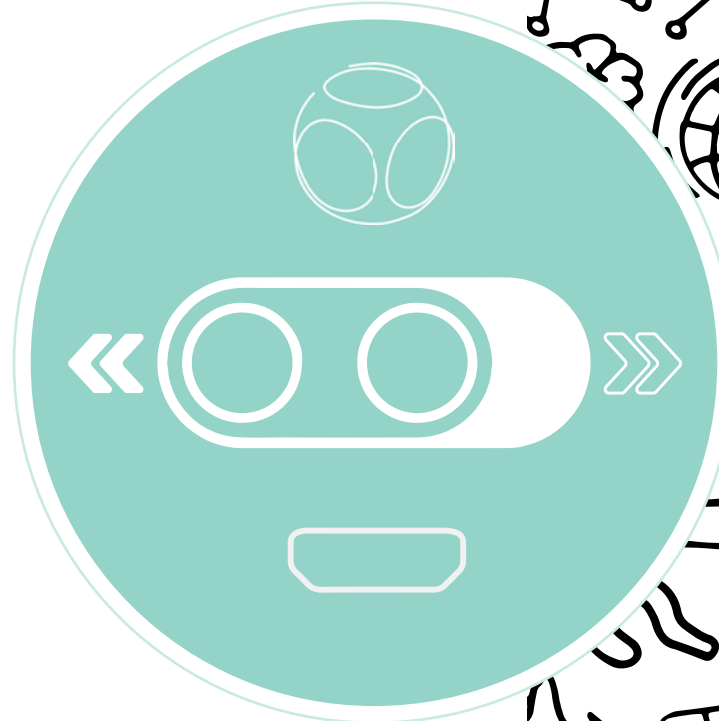


17



! Finished


Make sure your build is correct before turning it on.

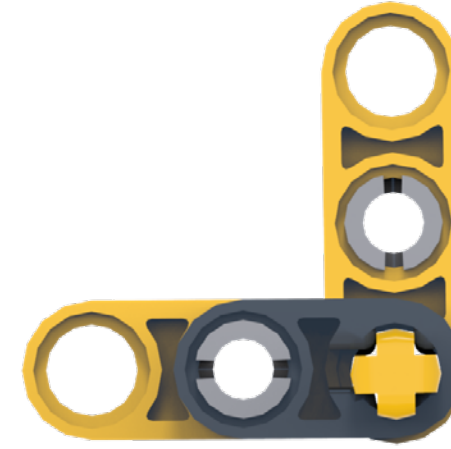
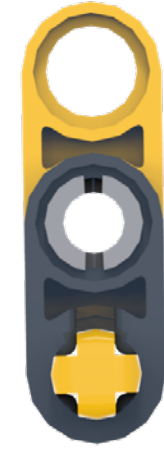


Learn

Cam

A Cam has an oblong shape. When it rotates in a rotary motion (circular motion), the follower (whatever is resting on top of it) moves up and down in a reciprocating motion.

They change circular motion into linear, or back and forth, motion!



Task

1. If a wheel was spinning instead of a cam would the pogo stick move?
2. What kind of motion is the pogo stick making?
3. Try adjusting the cams in the ways shown above!
4. What did you notice change?

Jumping with creativity!



vinee