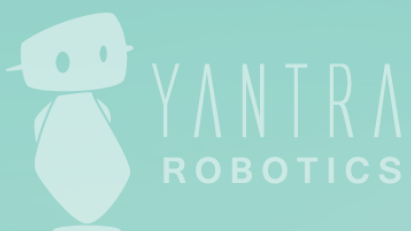
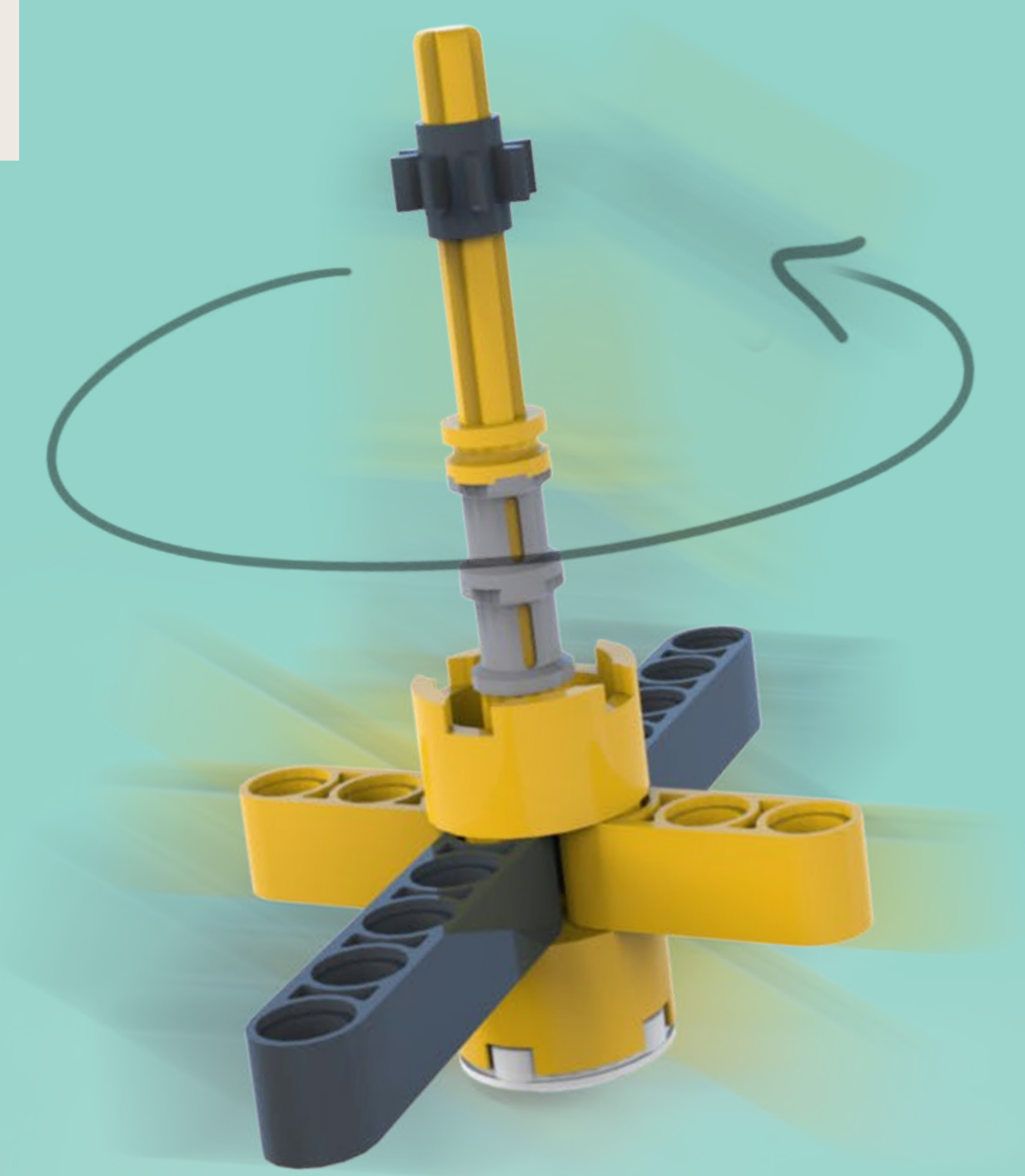
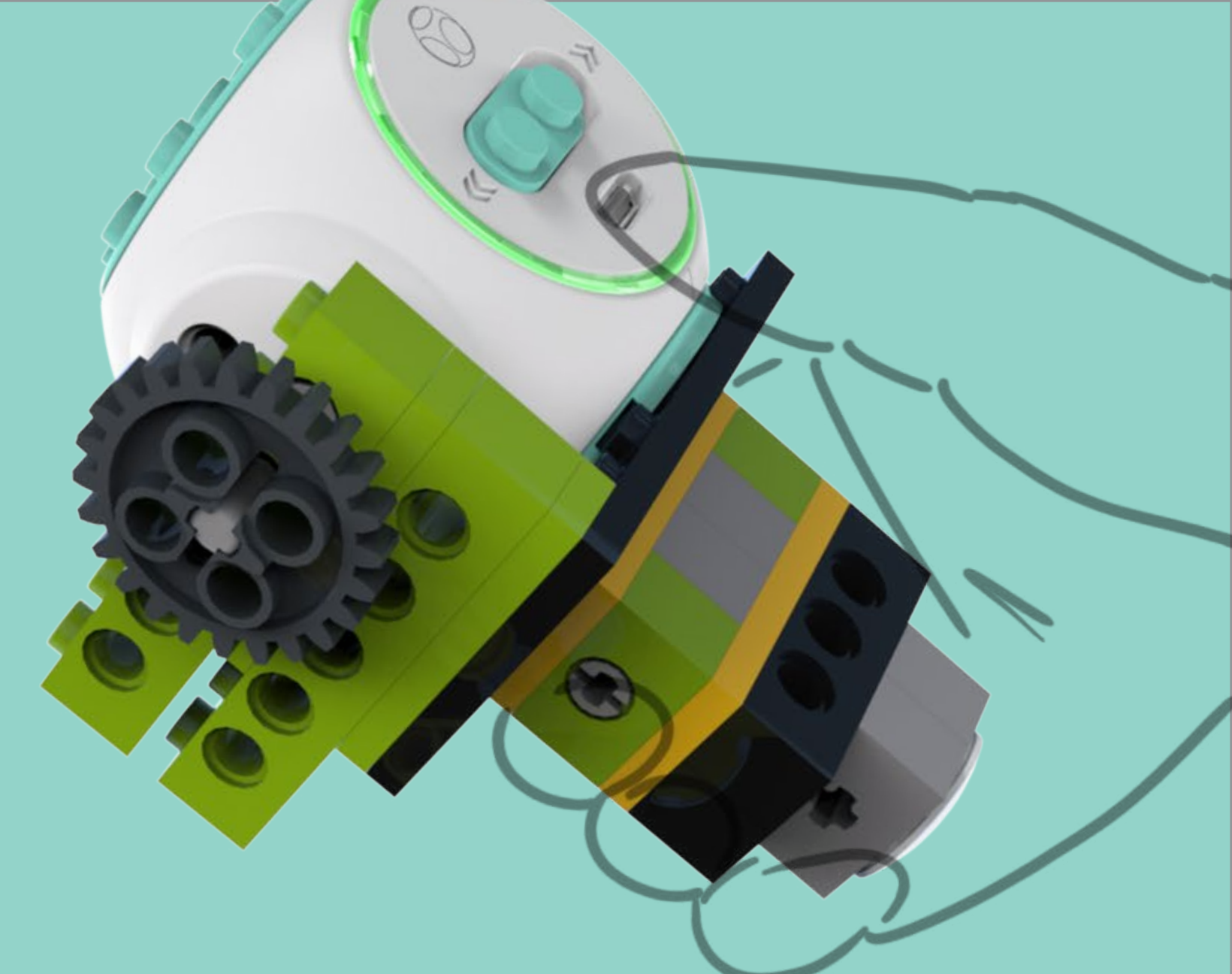


Start
Building!

Mini Beyblade



Mini Beyblade

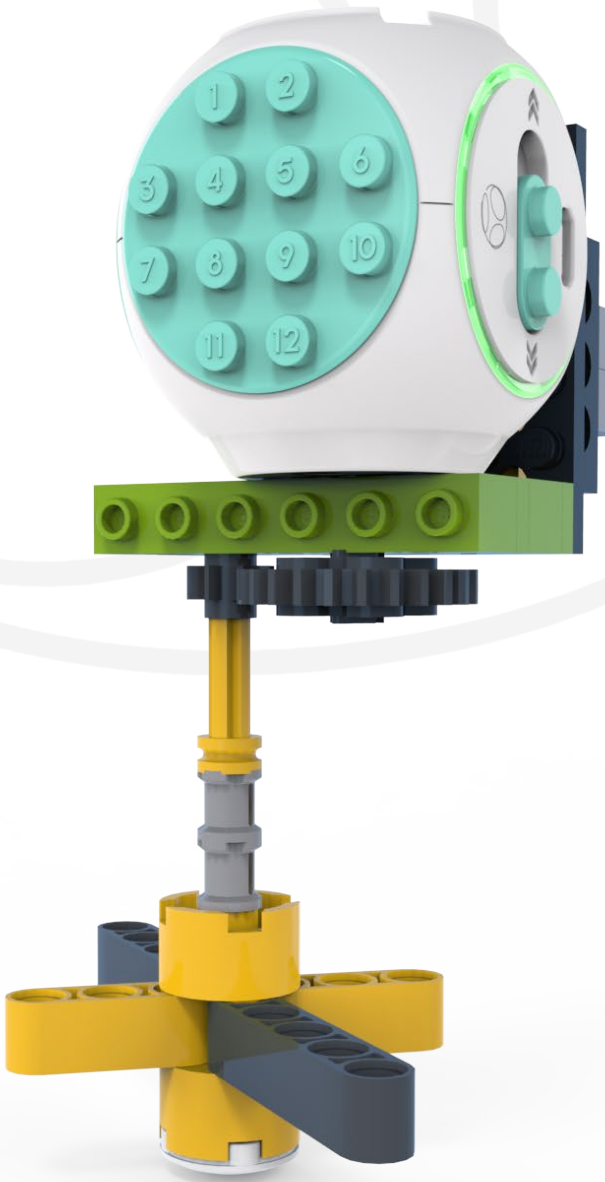
Description: The beyblade uses gears to transfer power and motion from one axle to another. Turn it on and on and lift the handle to watch the beyblade spin!

Learn why gears have teeth and how they can interlock to turn each other.

Experiment with gear ratio by swapping the gears to change the speed.

ViNee Set: Essential

Learn: Gear Ratio



Parts In This Build

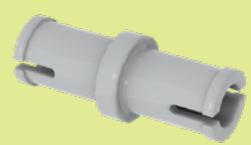
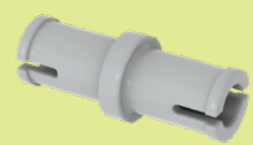
- | | | | | | | | |
|----|--|----|--|----|--|----|--|
| X2 | | X2 | | X2 | | X2 | |
| X2 | | X2 | | X1 | | X1 | |
| X1 | | X1 | | X1 | | X2 | |
| X2 | | X2 | | X2 | | X2 | |
| X2 | | X2 | | X1 | | X1 | |



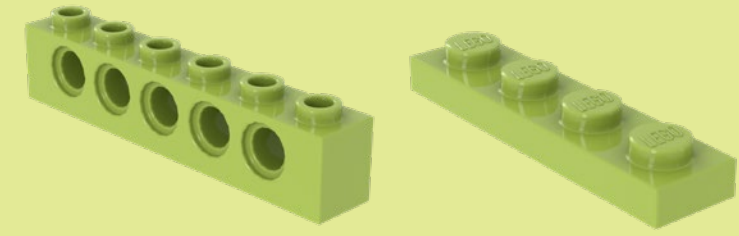
1



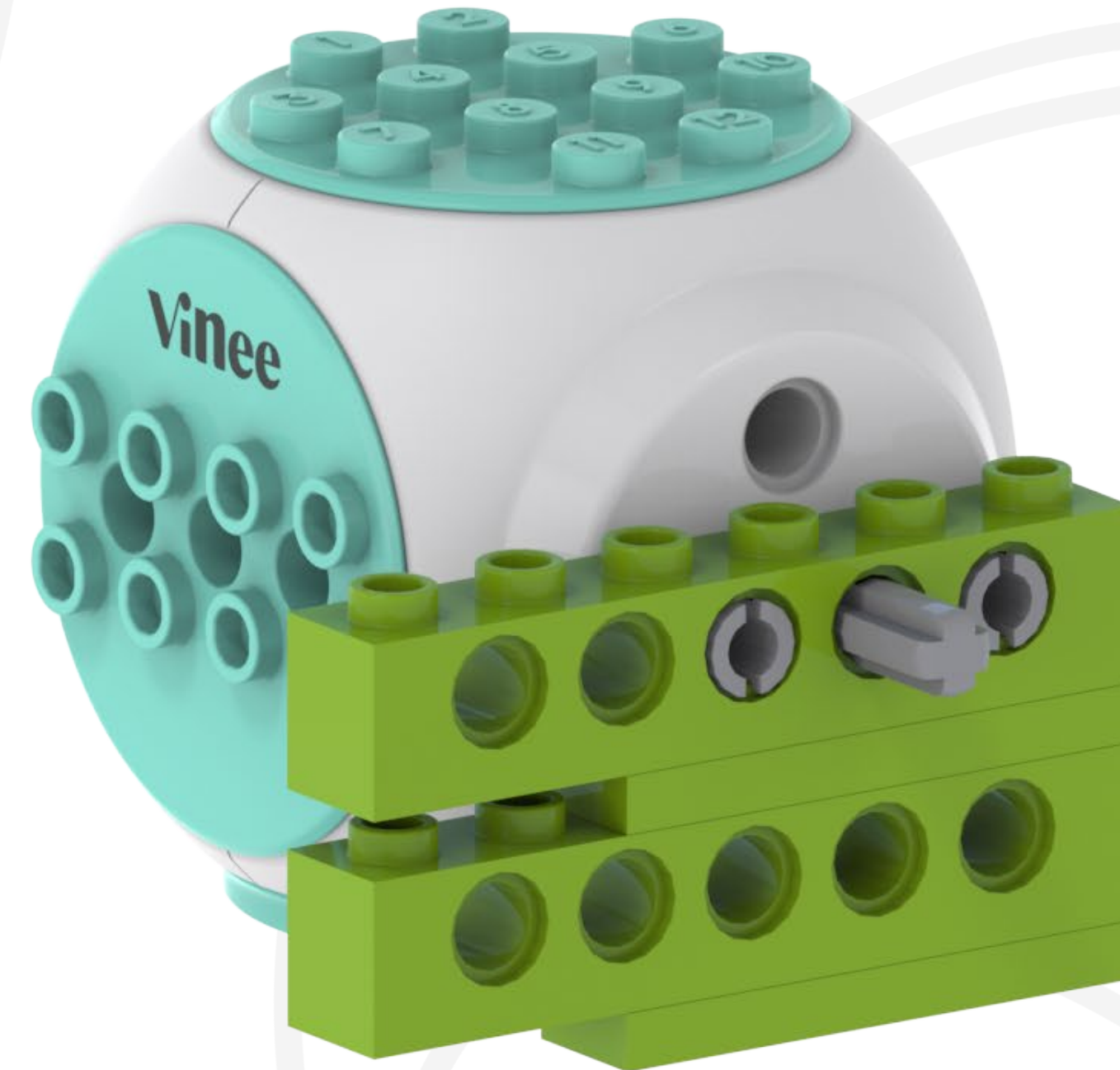
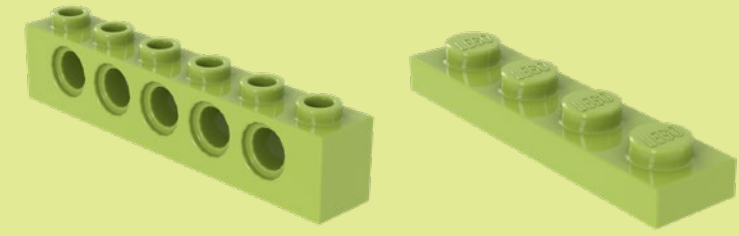
#3



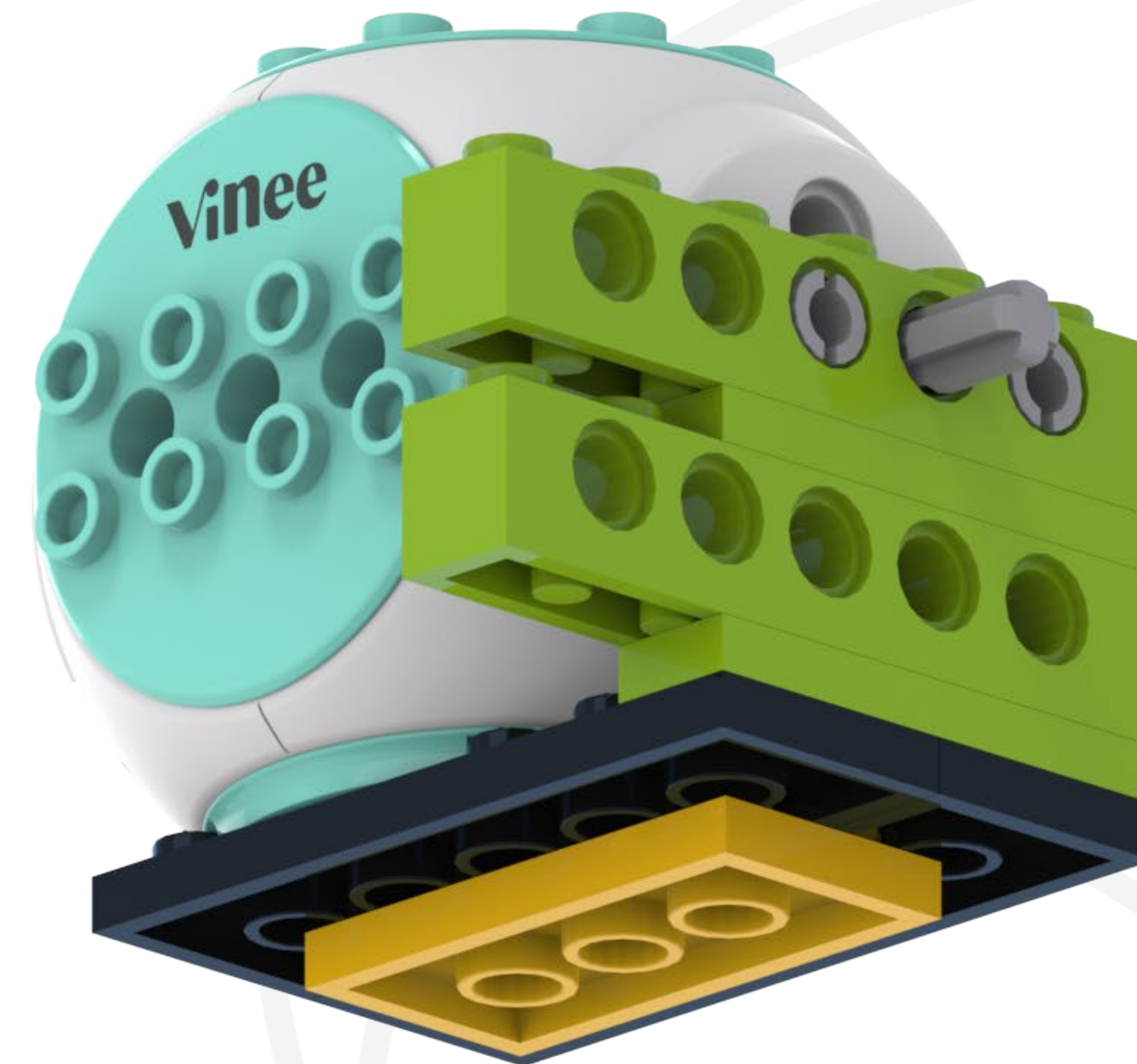
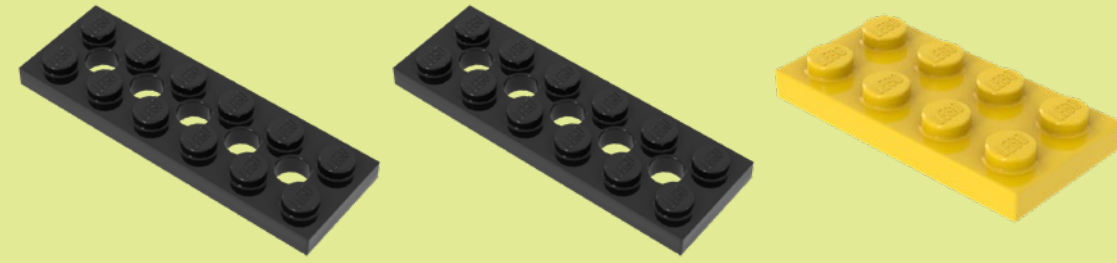
2



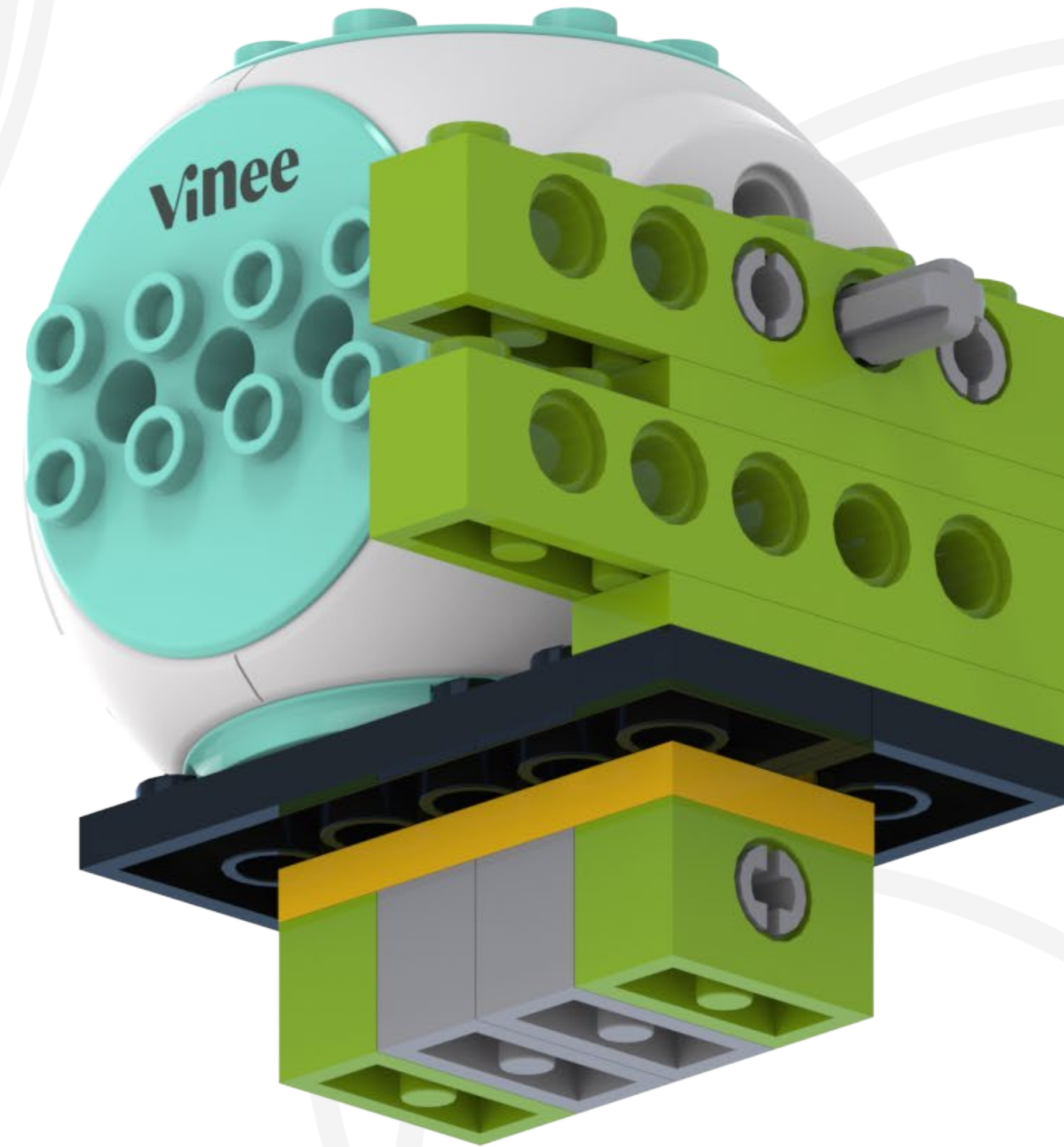
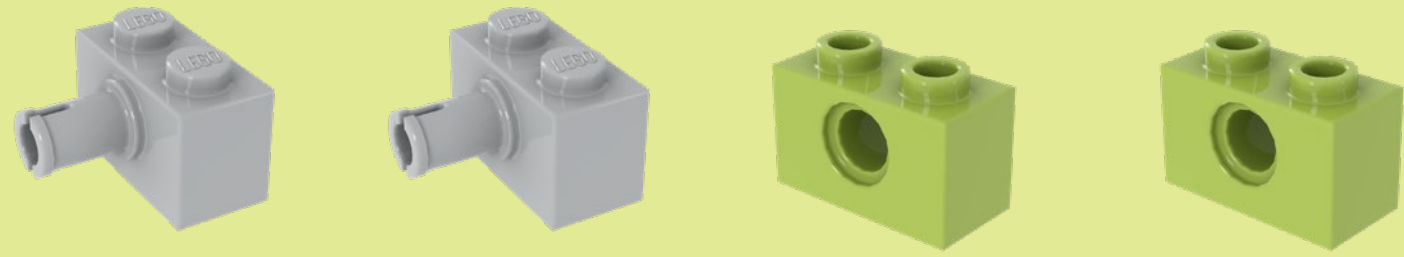
3



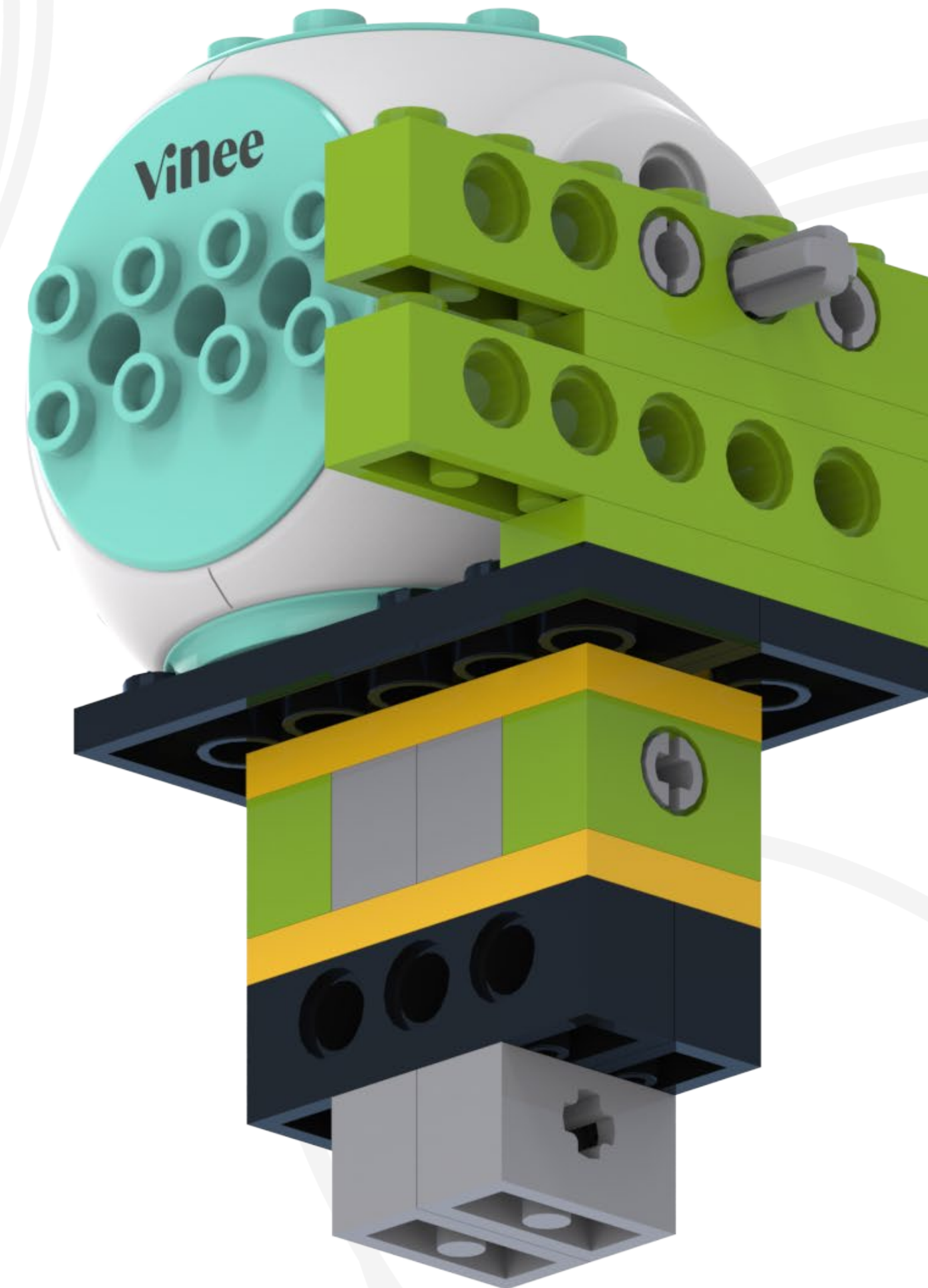
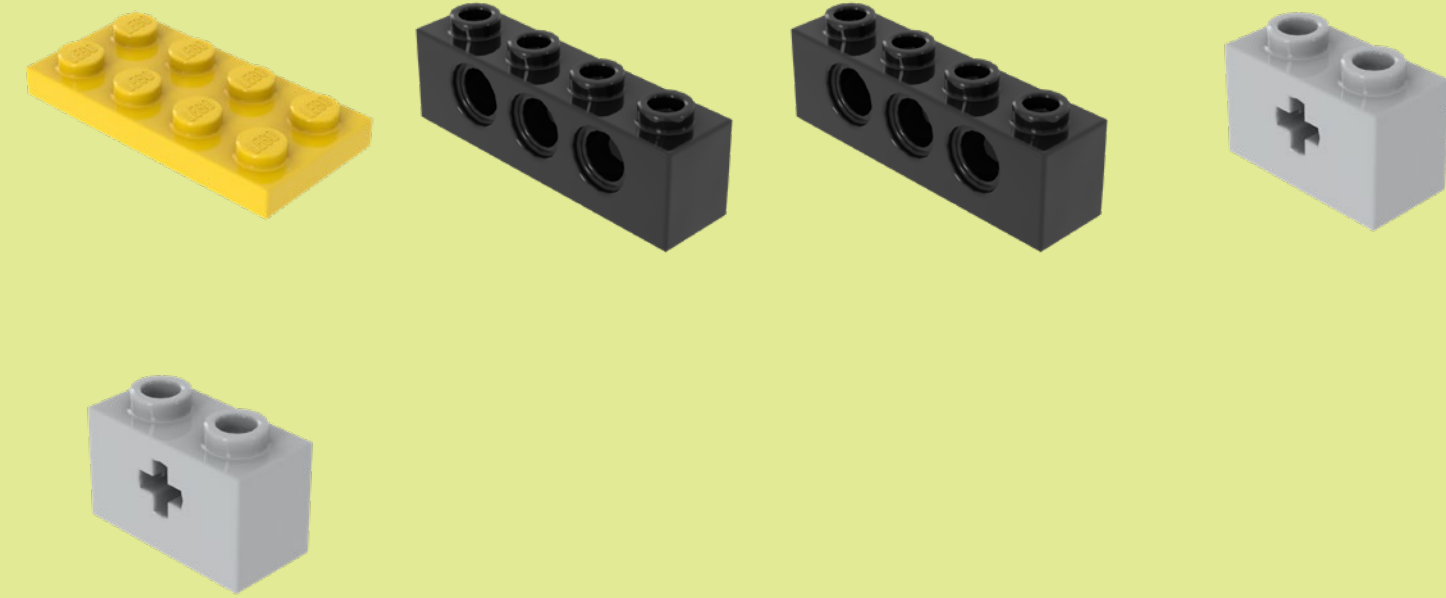
4



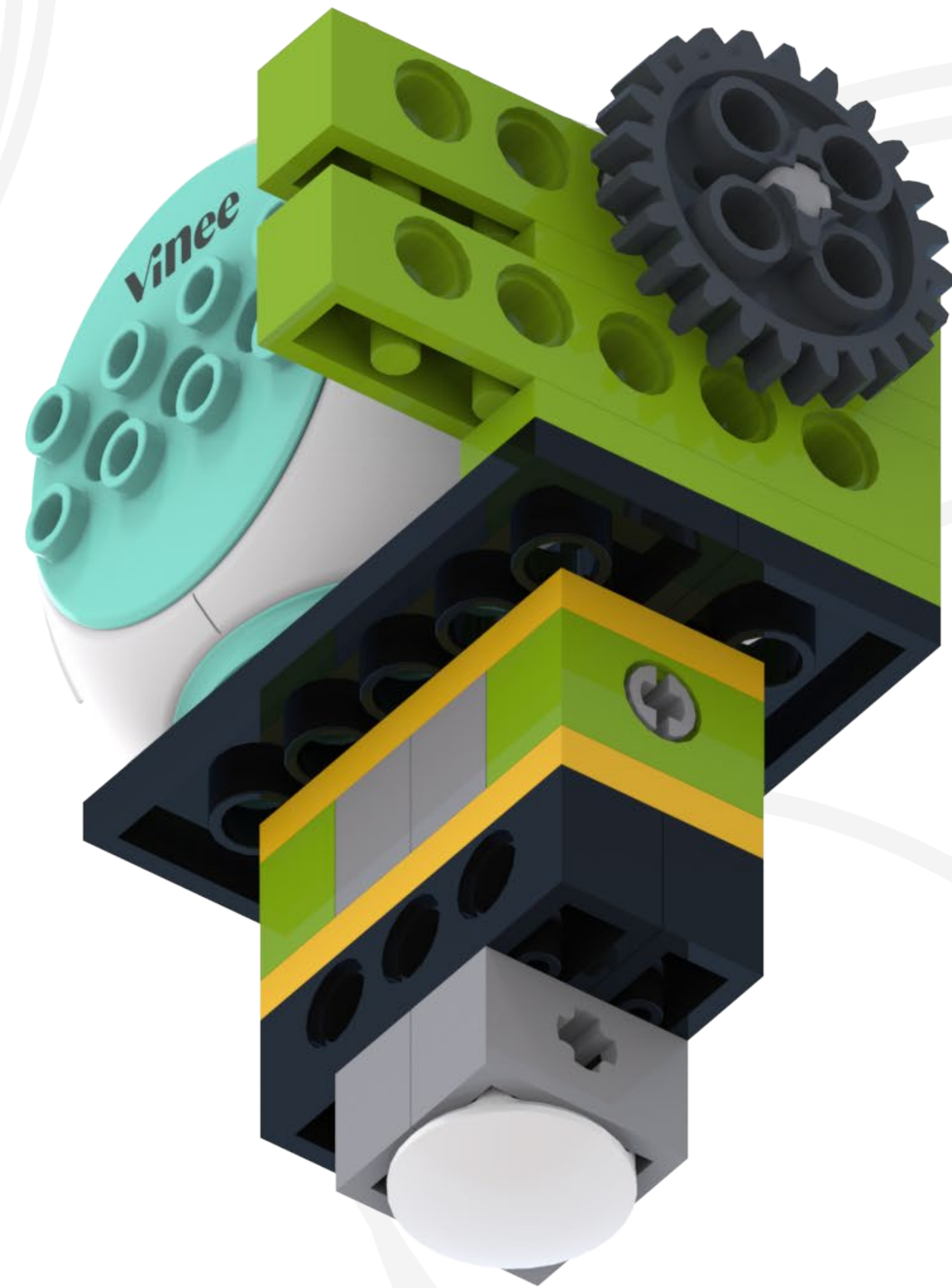
5



6



7



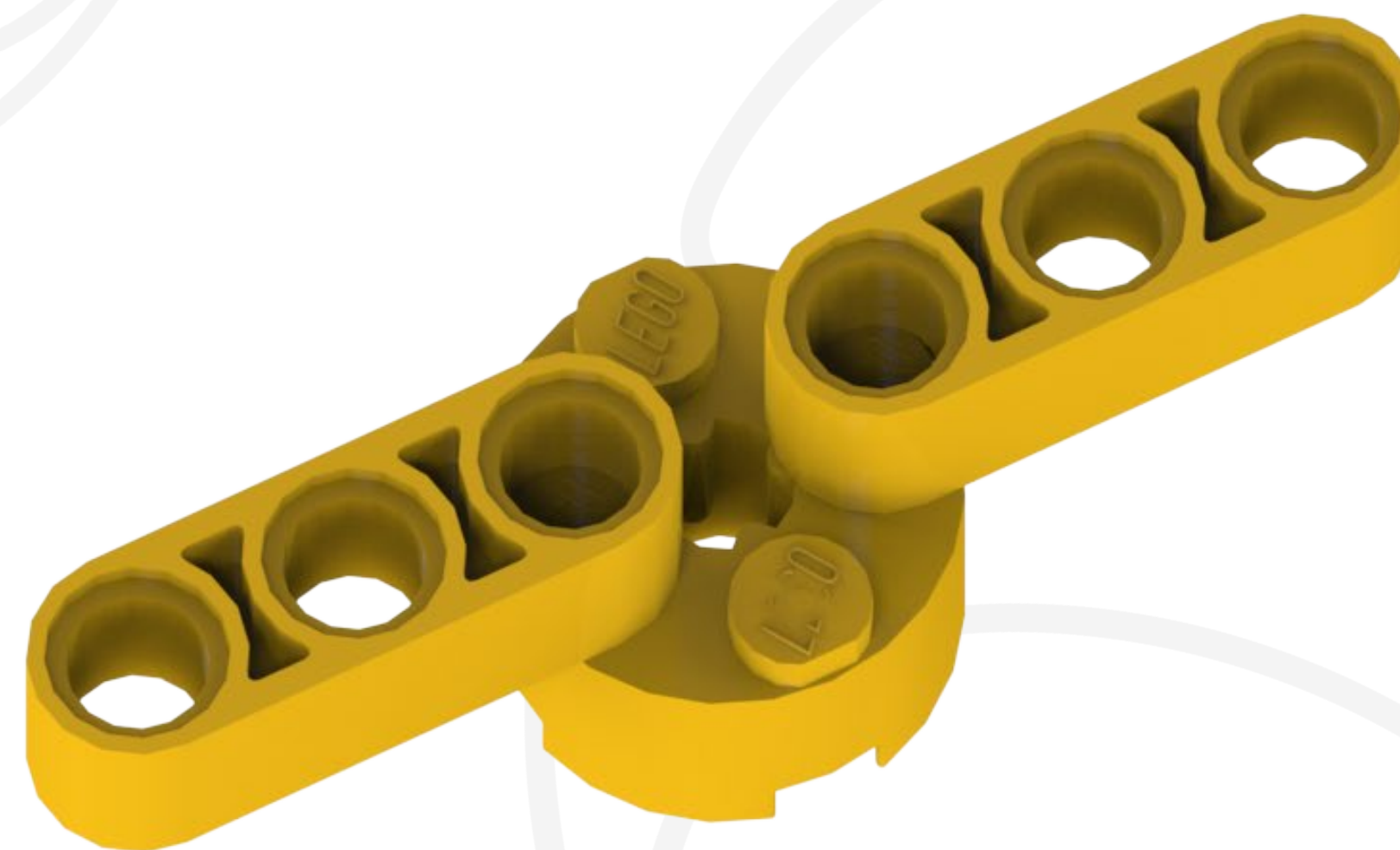
8

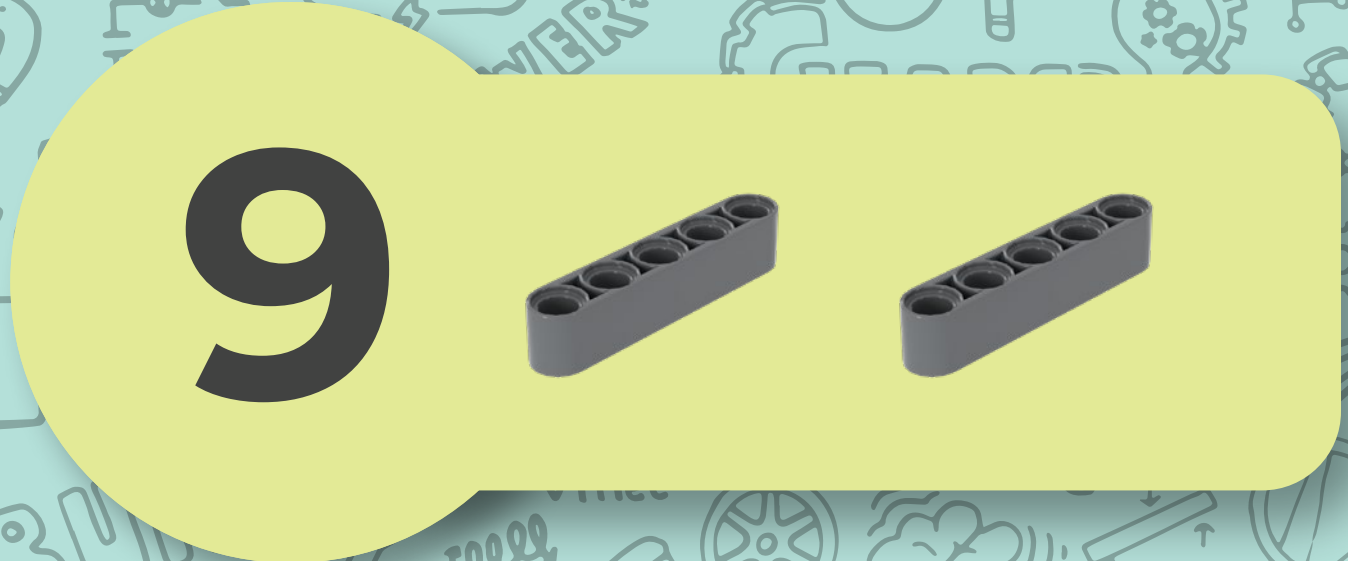


New Assembly



Press the holes
onto the studs.



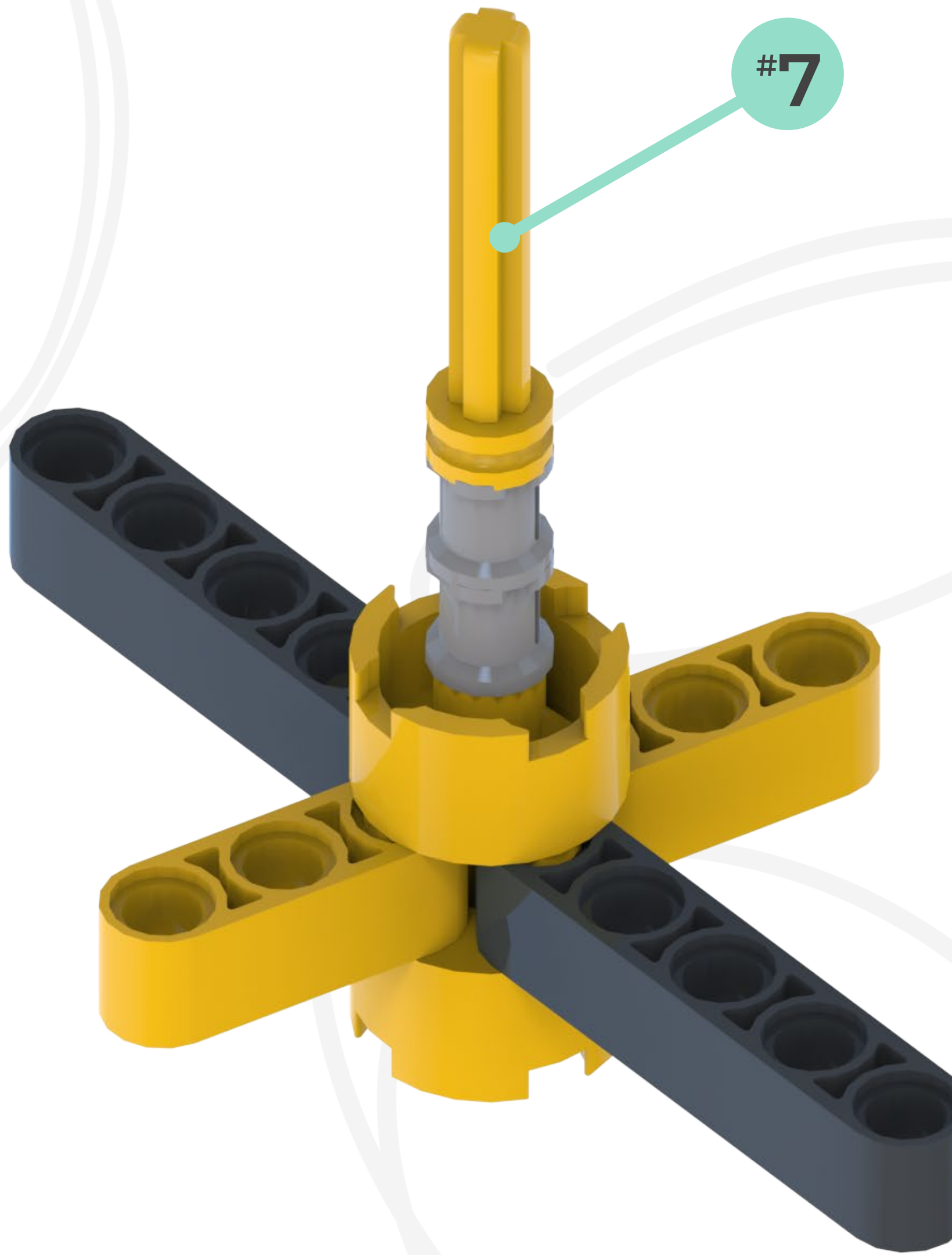


11

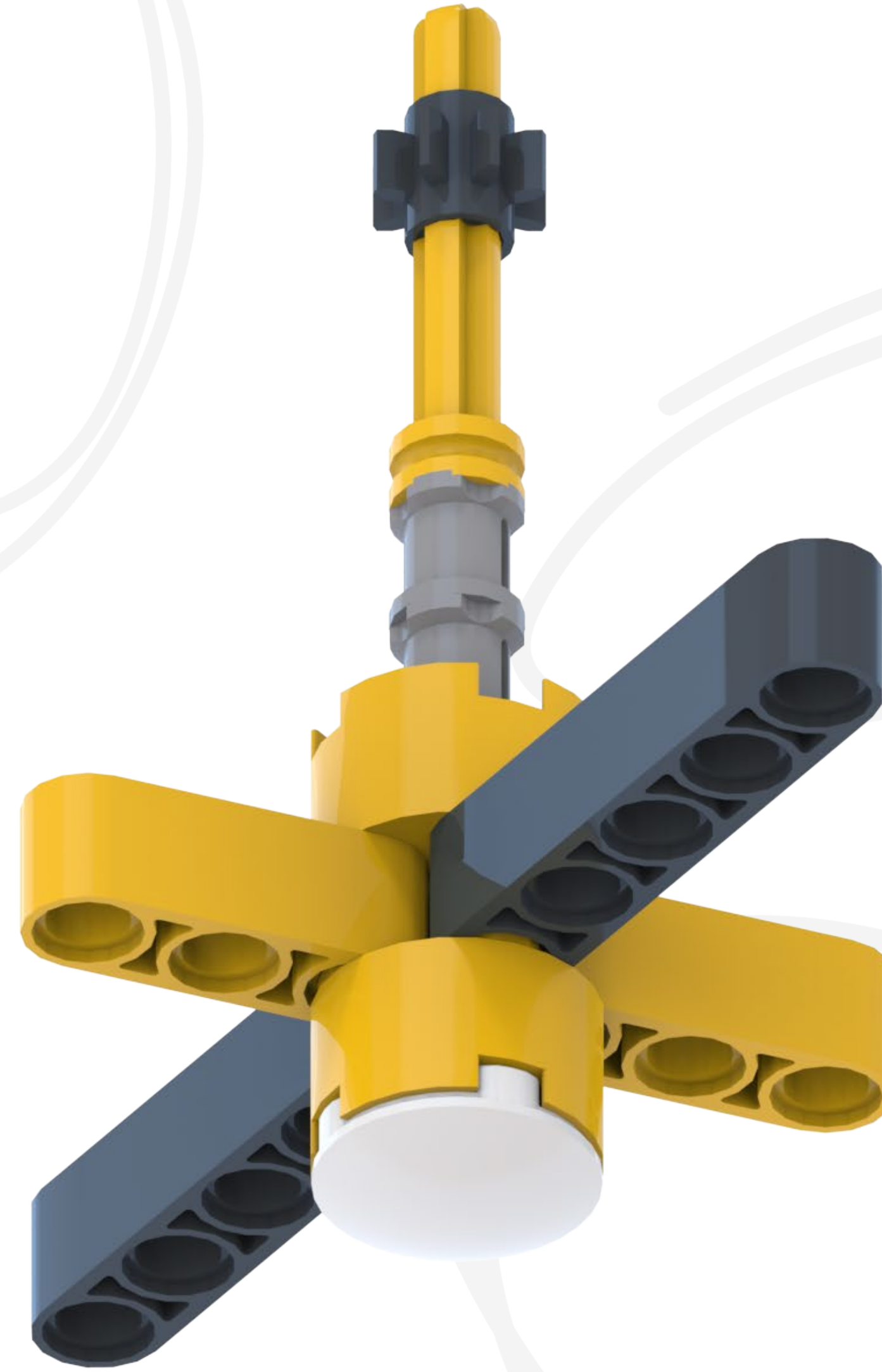
#7



#7



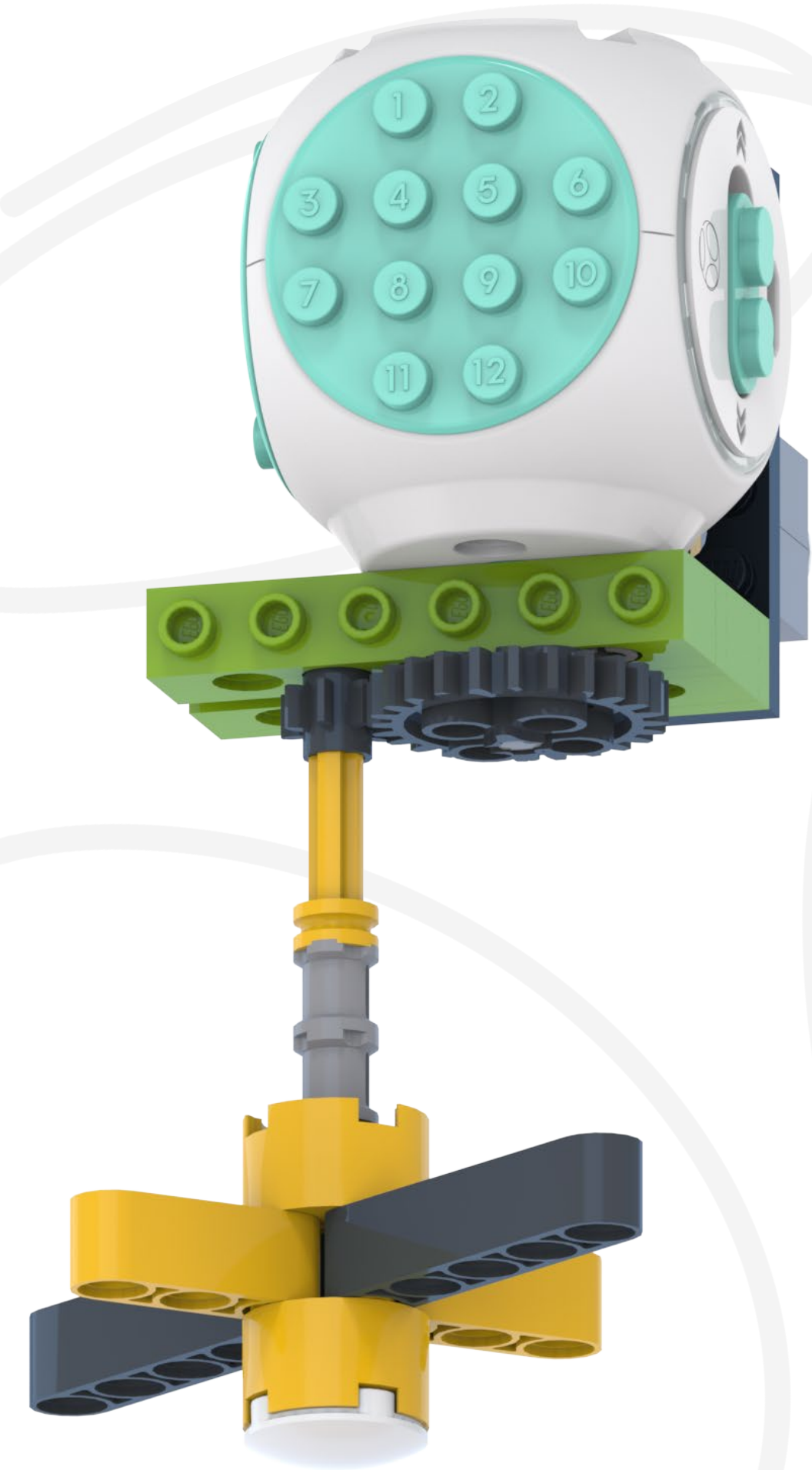
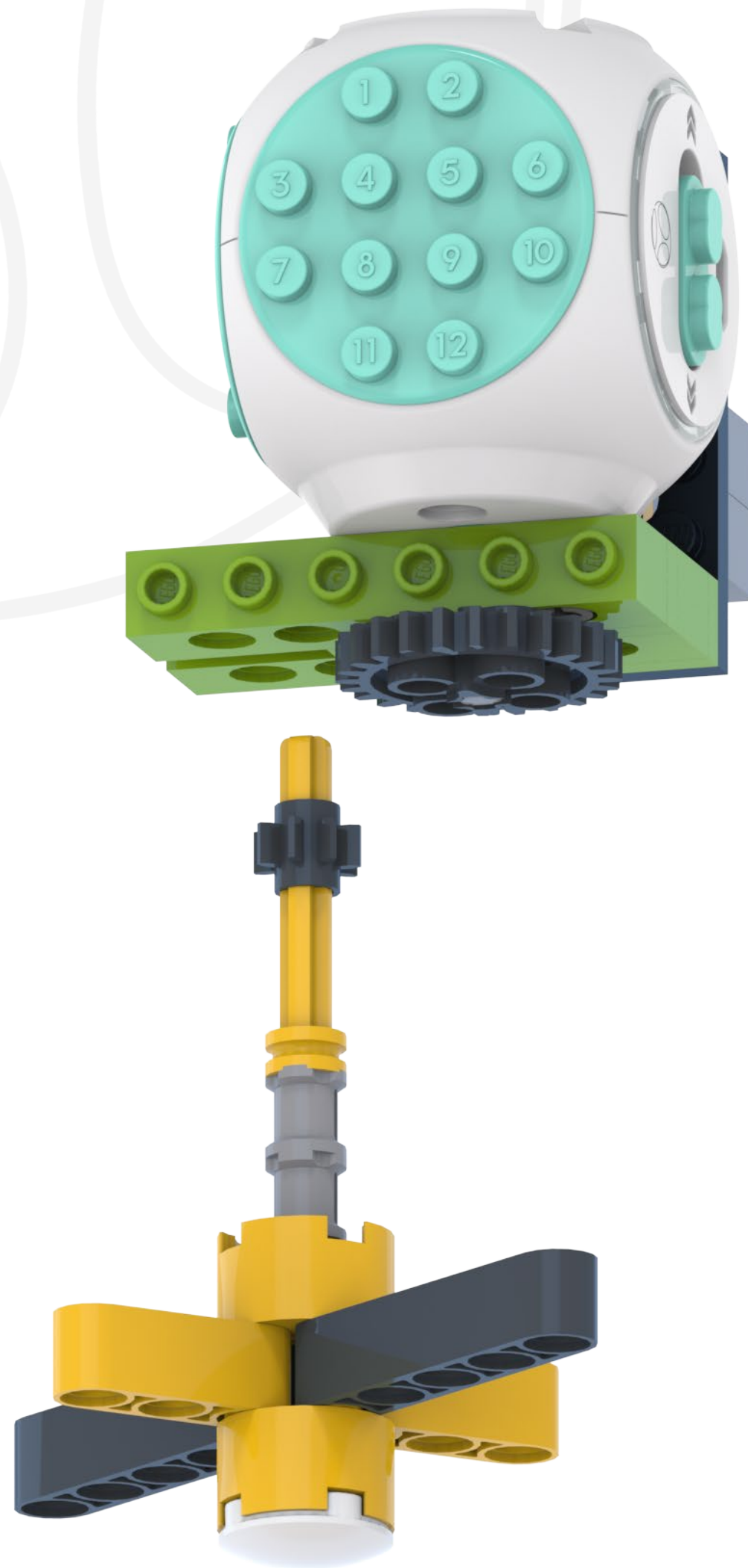
13



14

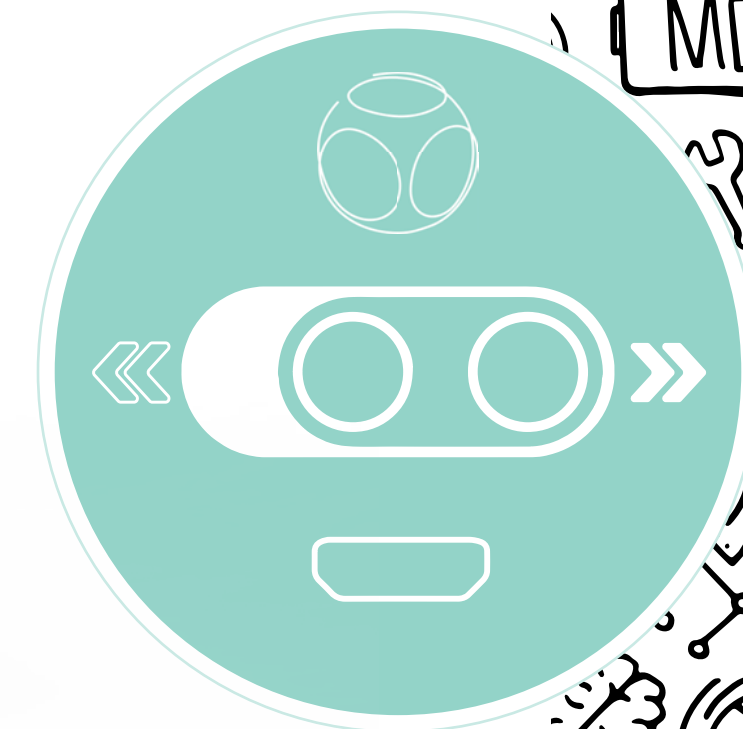
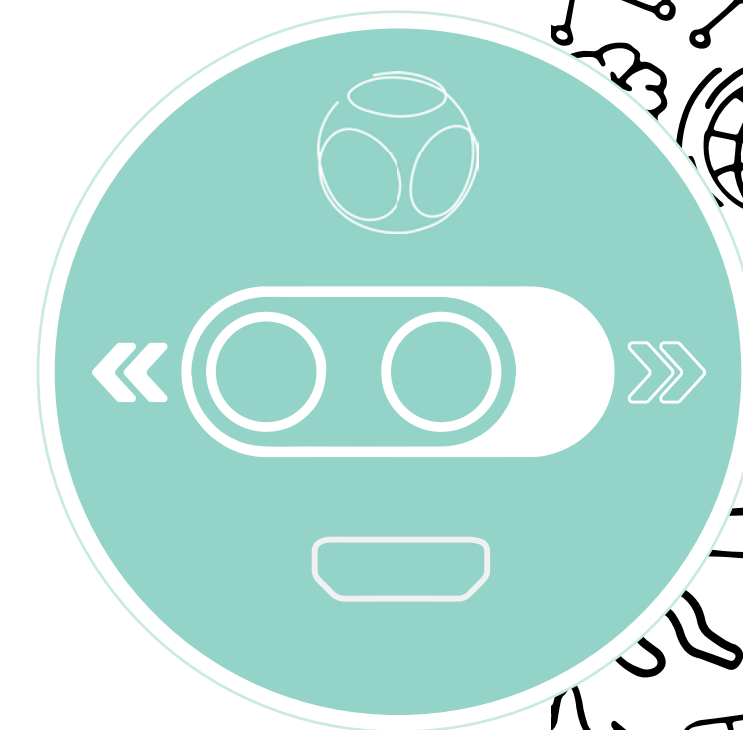


Choose the correct hole. The teeth should be meshed!



! Finished

Make sure your build is correct before turning it on.



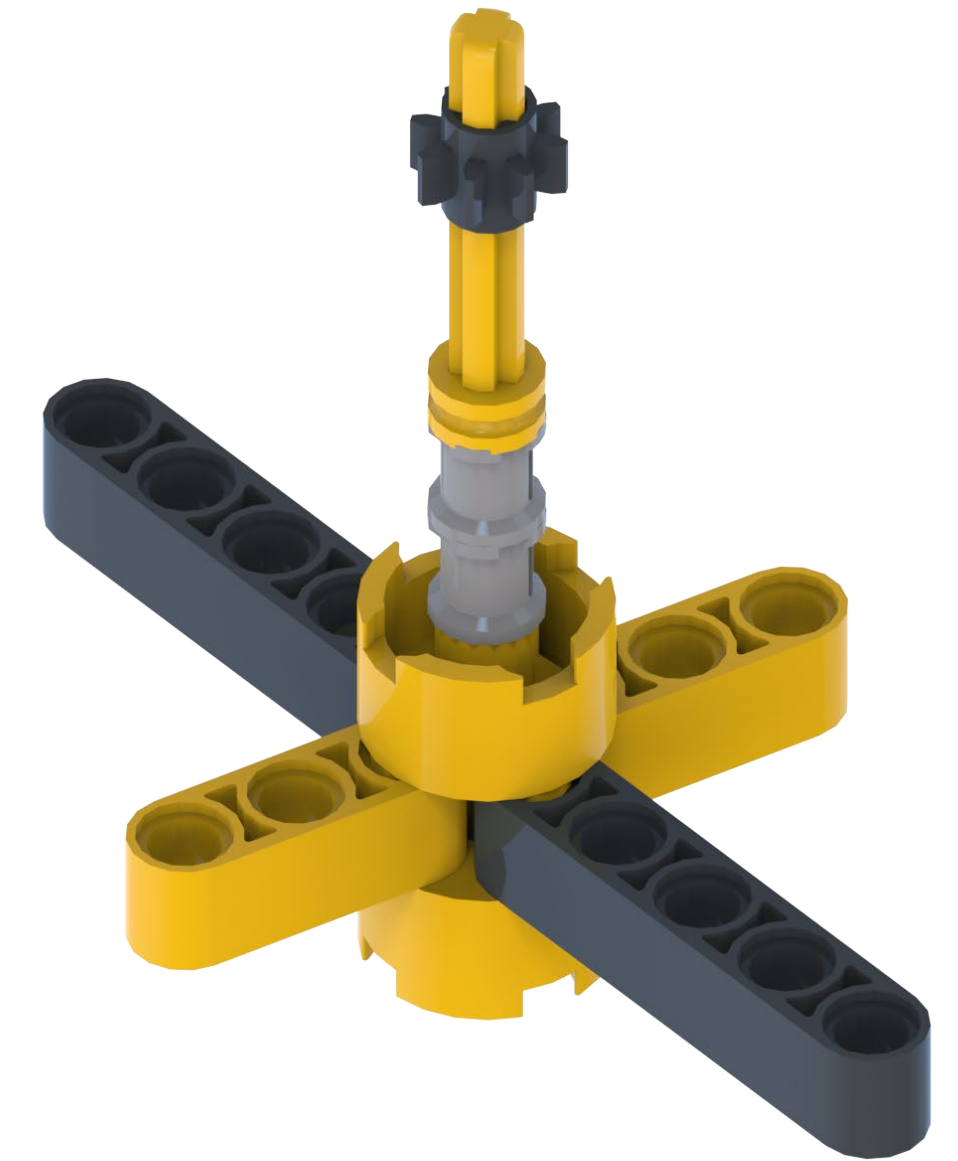
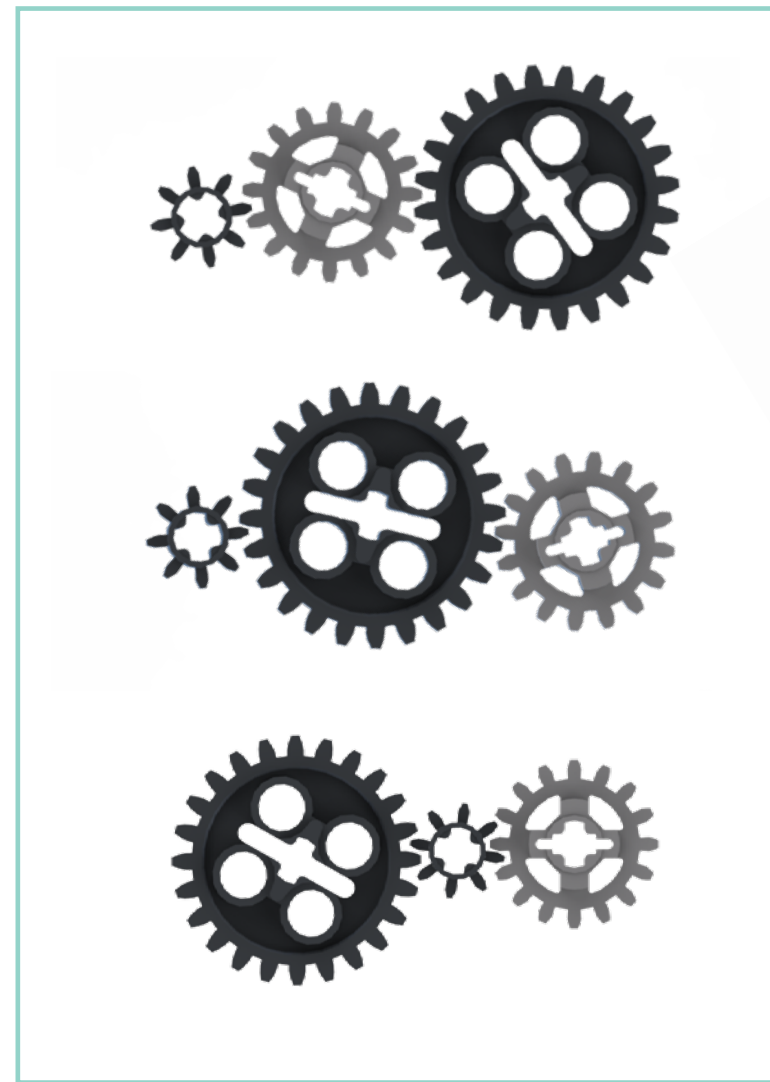
Learn

Gears

Gears are a circle shape and have teeth around their edges. The teeth on gears can slot together with other gears. When one gear is turned, it turns the other in the opposite direction!

Gear Ratio

Different sized gears can interlock to change speed and torque (power!)



Customize it!

Task

1. What is making the beyblade spin?
2. Which gear has the most teeth and is it spinning faster or slower? Try switching the gears!
3. Try all of the gear combinations to see what changes!
4. Use your extra bricks to mod your bey blade!

Put your spin on it!



vinee