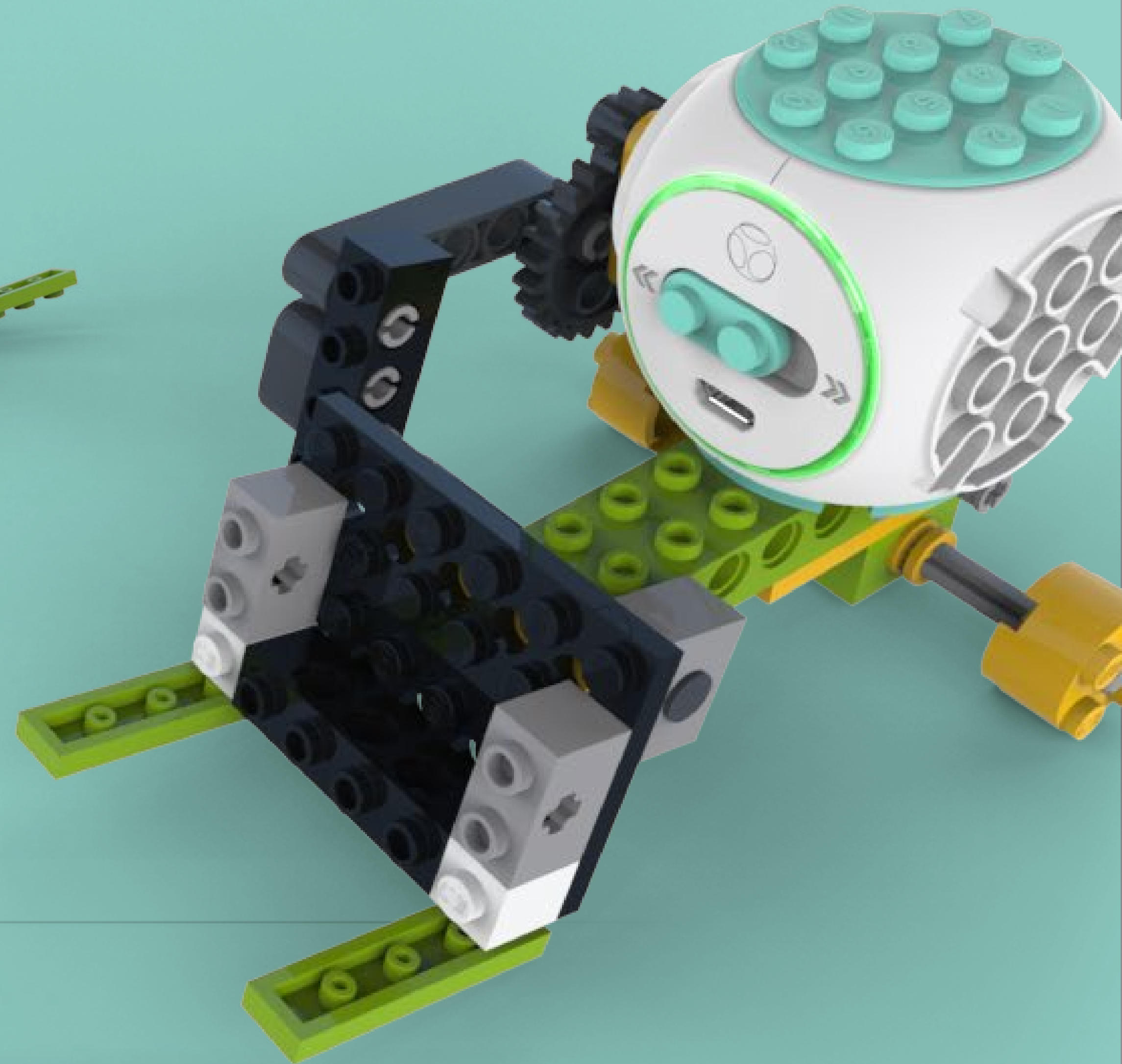
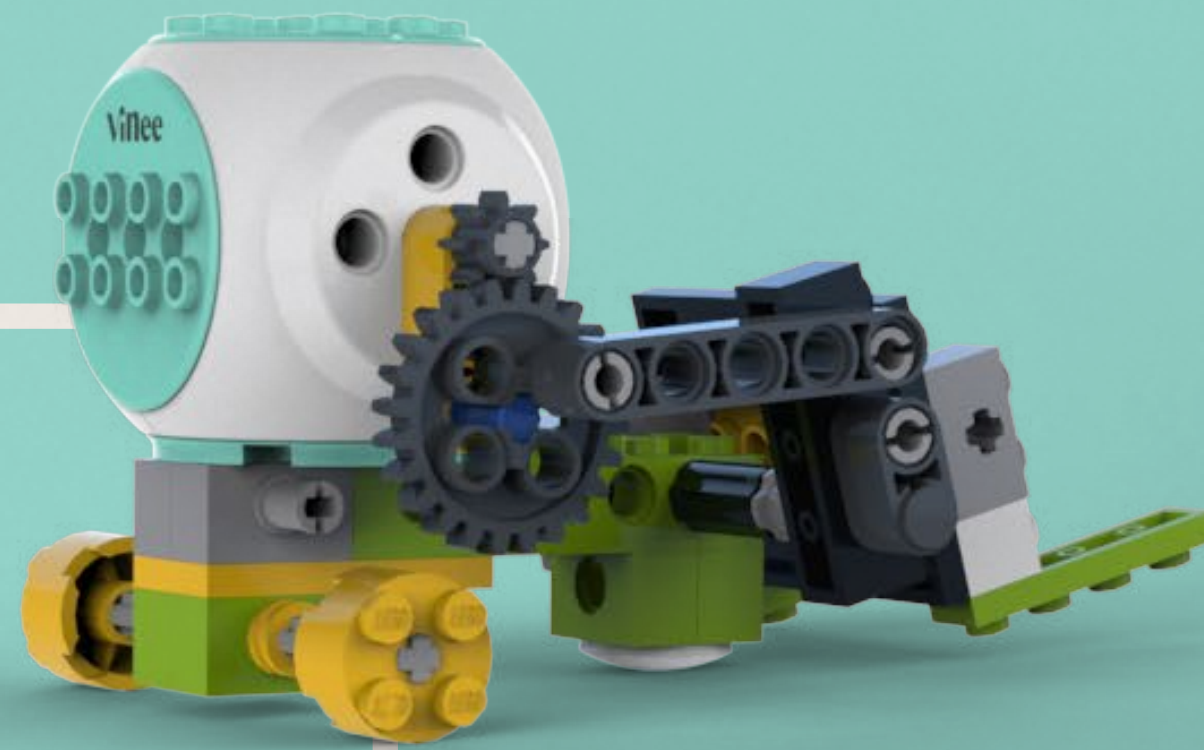


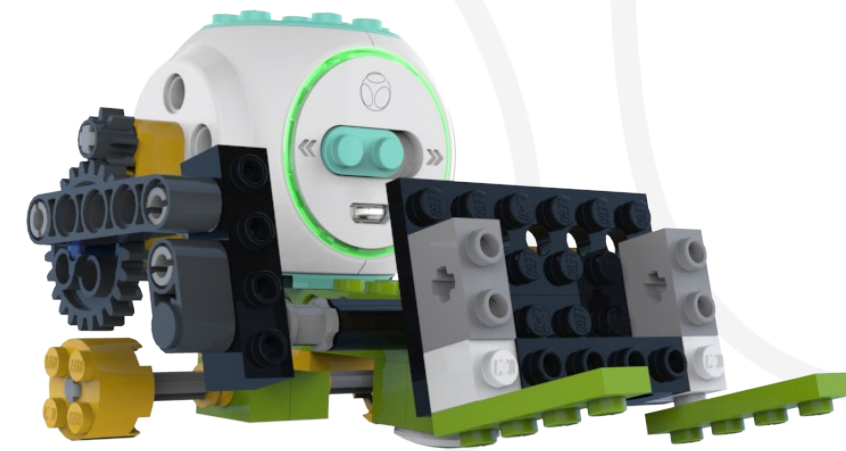
Start  
Building!

# Loader



# Loader

## Parts In This Build



## Description:

The Loader is a class 1 lever with 3 parts: A load, force, and fulcrum between them to pivot on. The motor provides the force to lift whatever is placed on the loader. The Axle acts as fulcrum to make it easier to lift the load.

## ViNee Set:

Essential

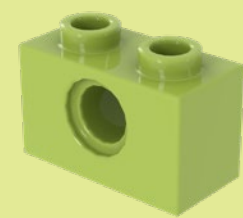
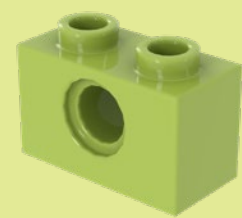
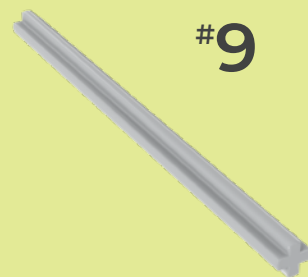
## Learn:

- Lever
- Crank

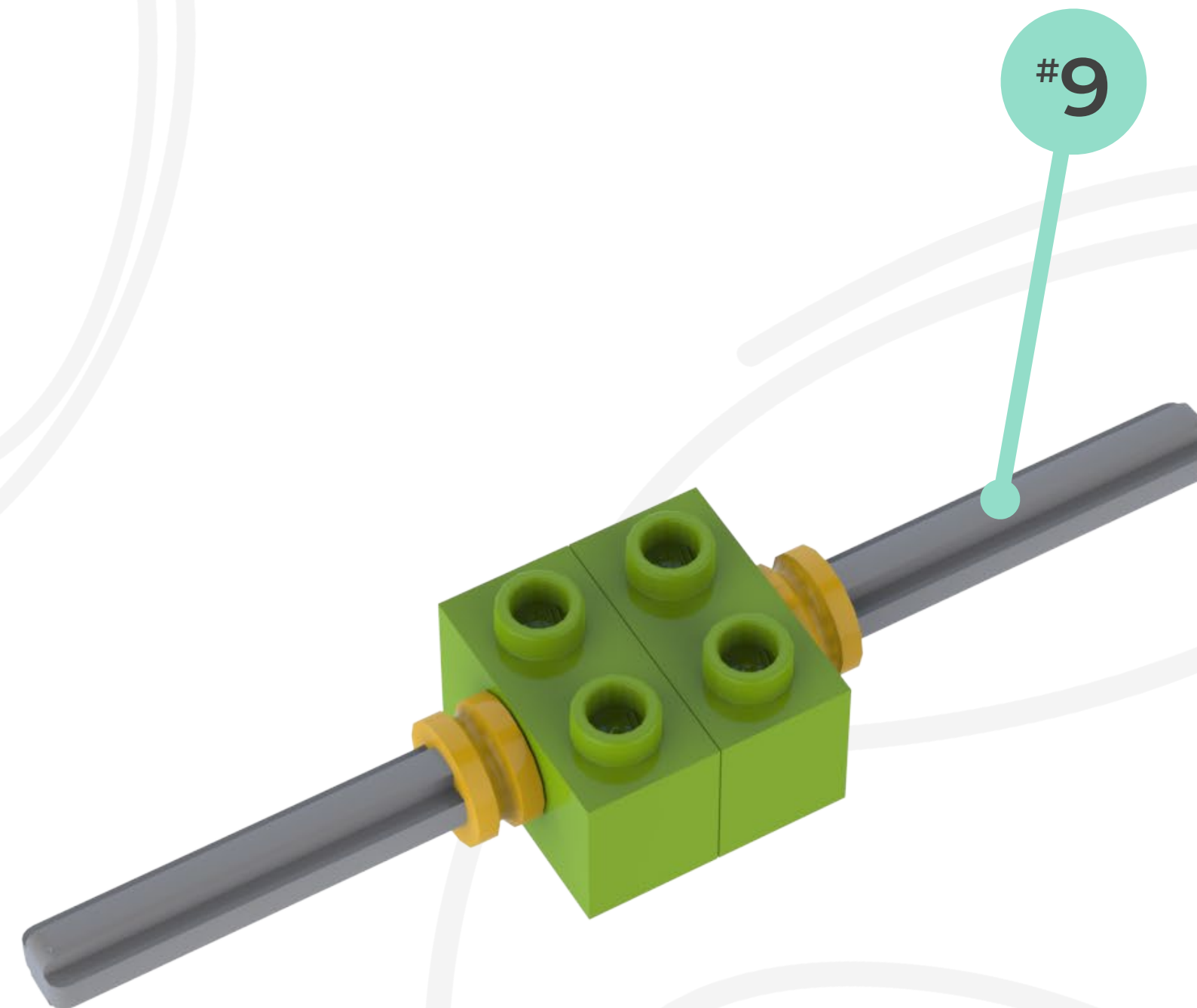


1

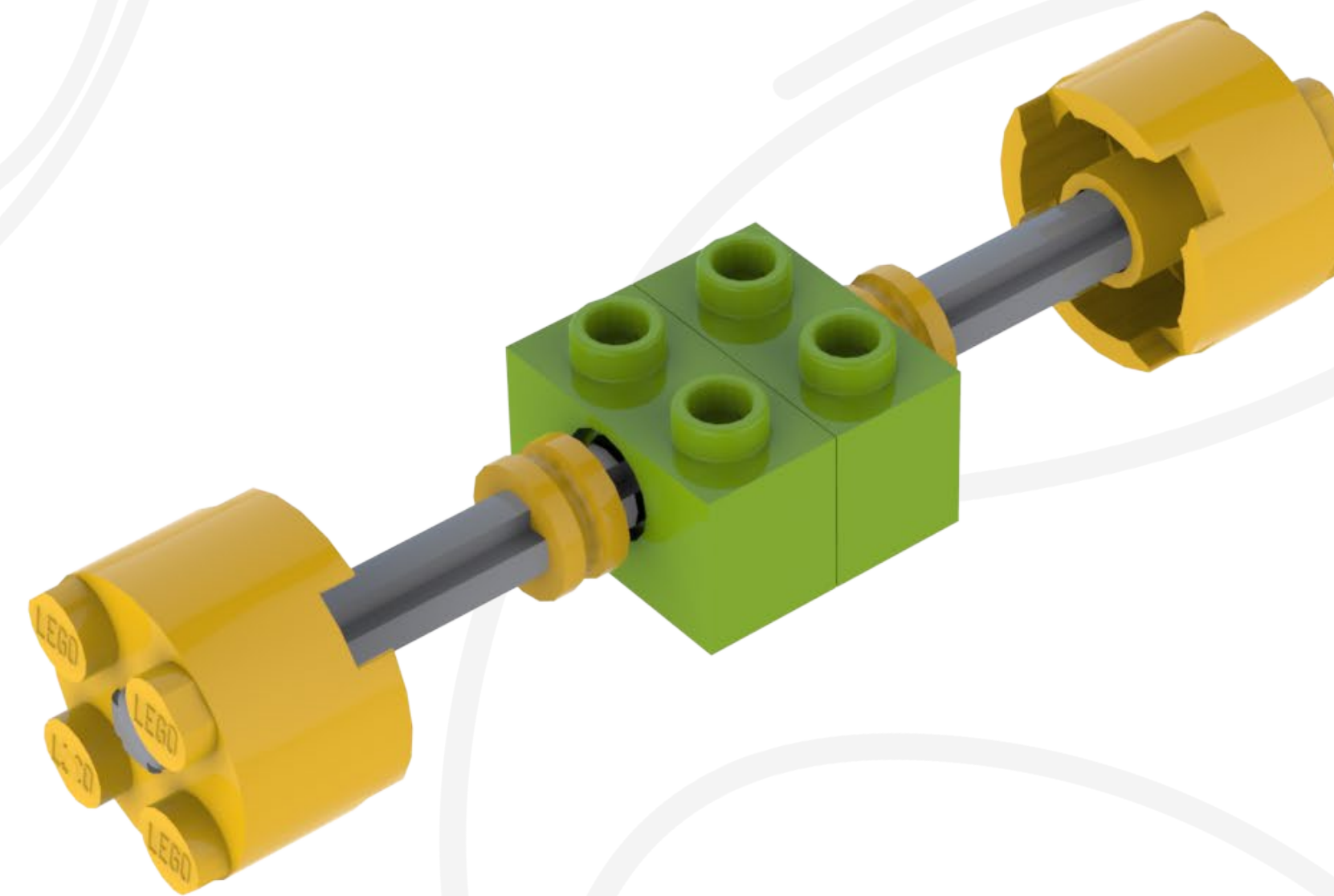
#9



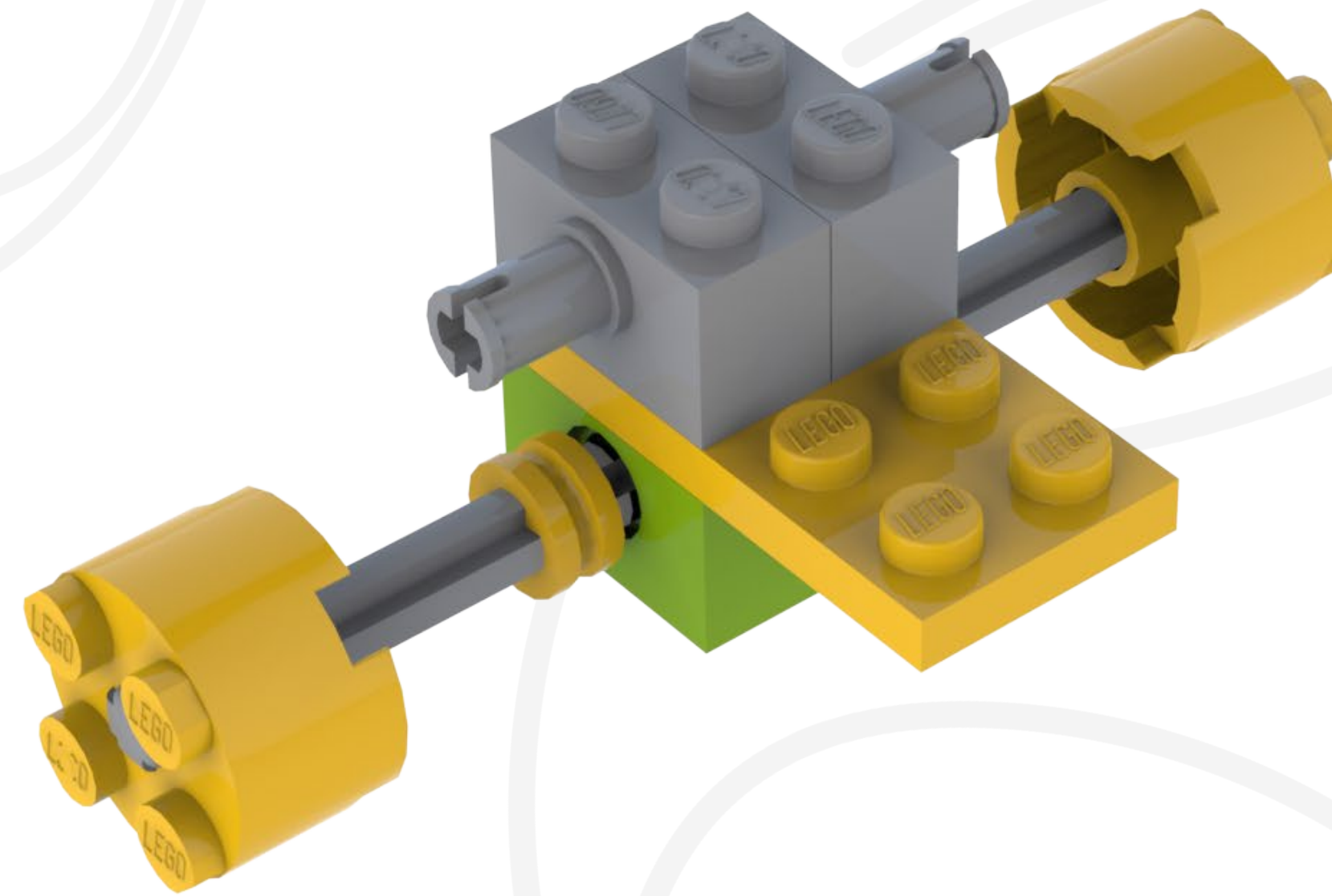
#9



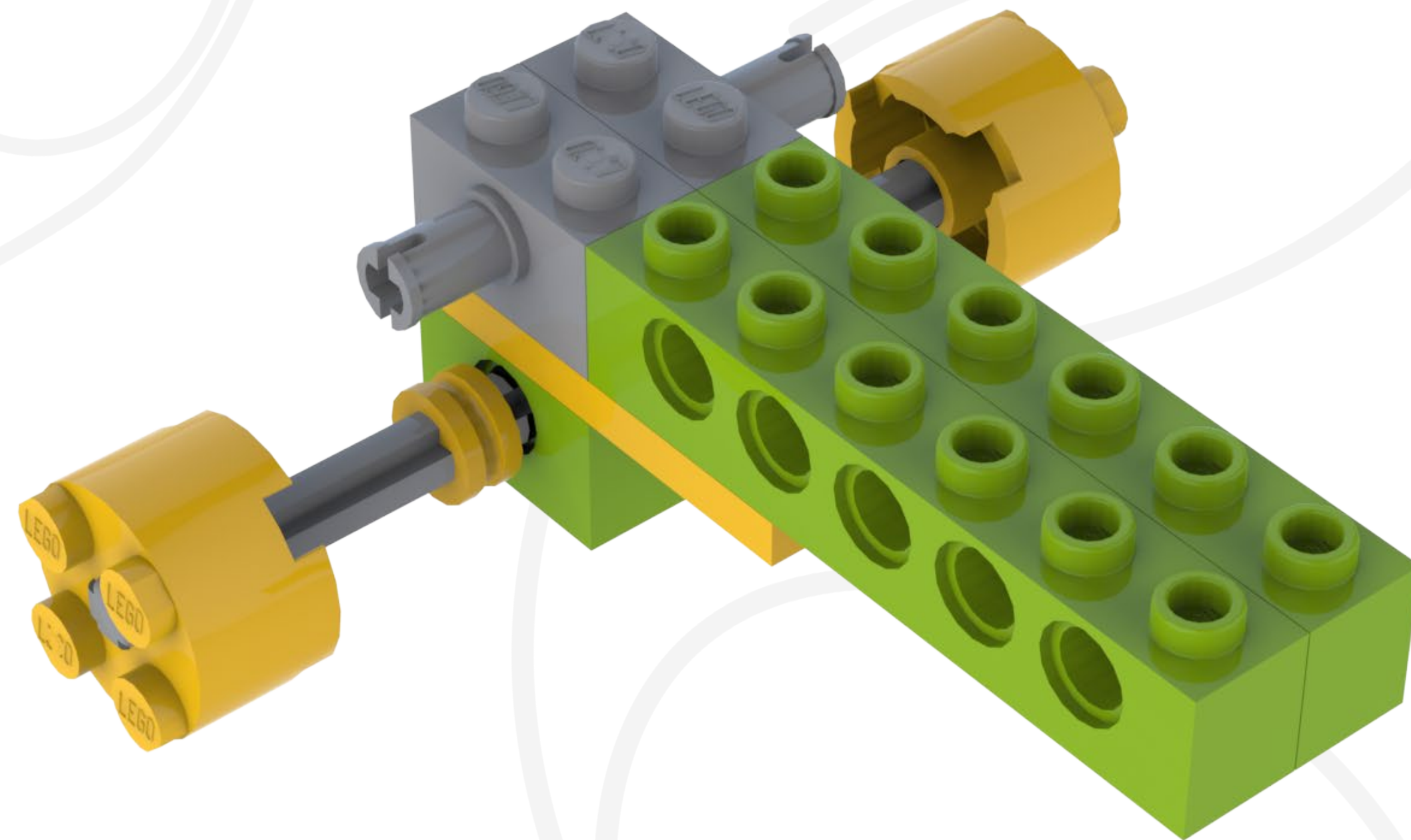
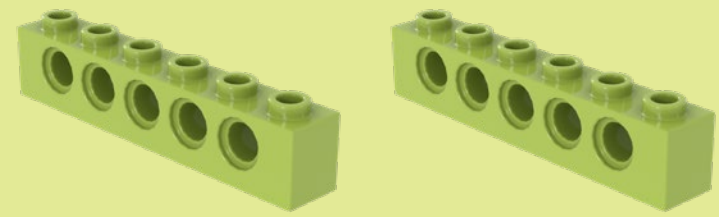
2



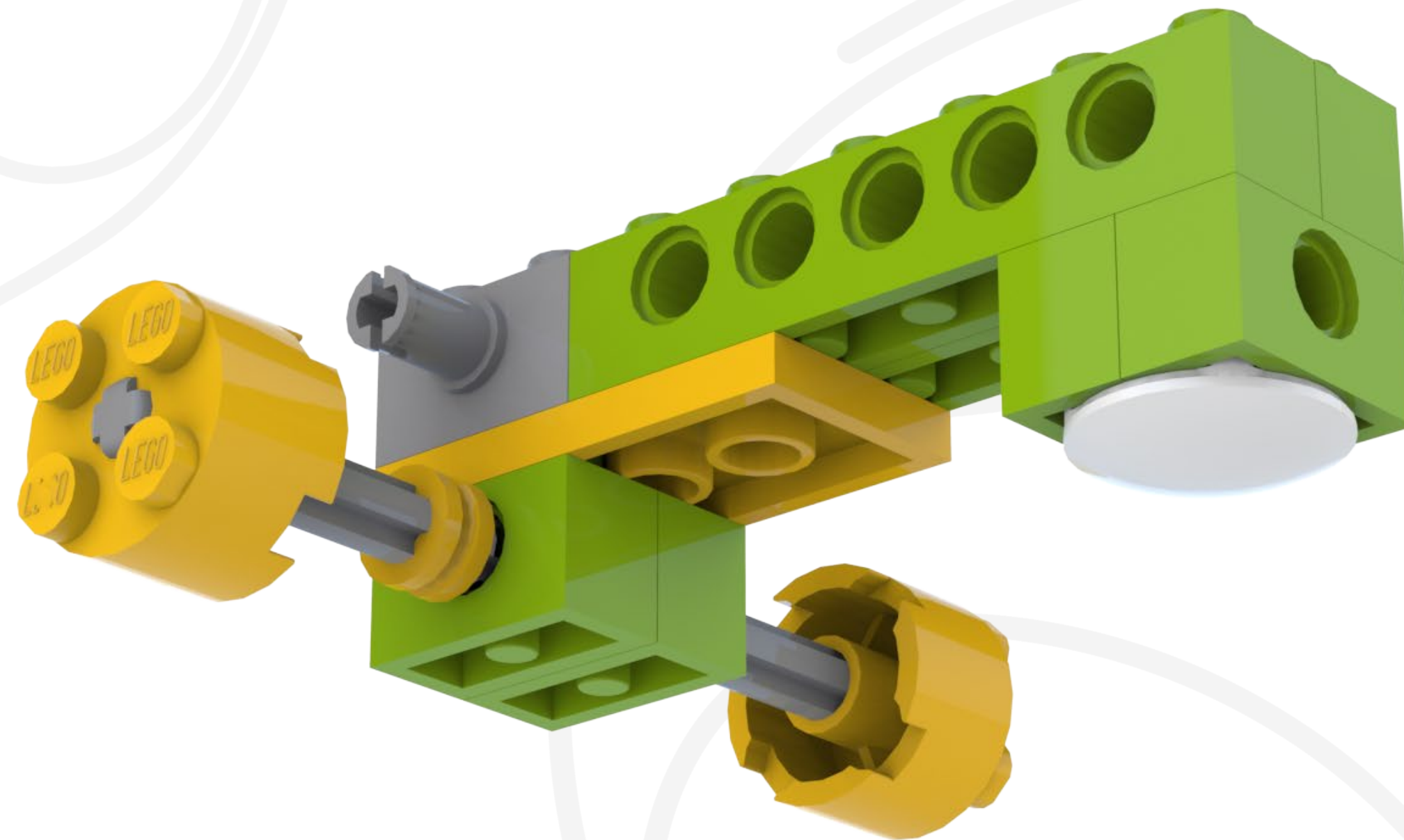
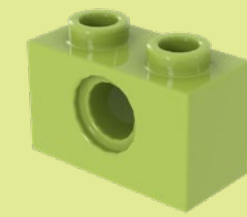
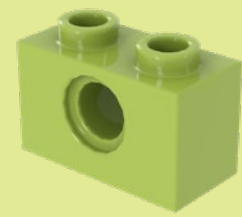
3



4



5



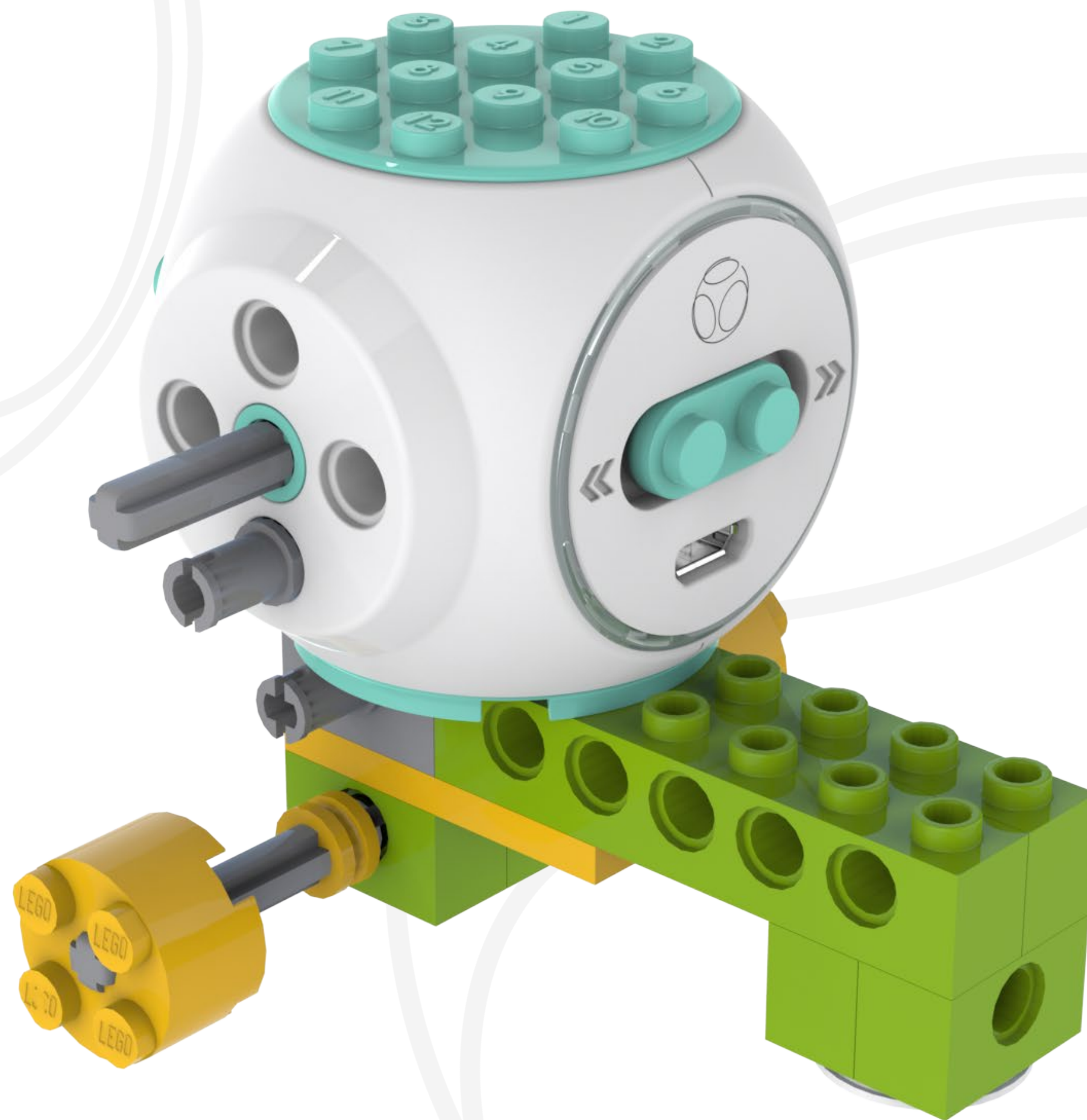
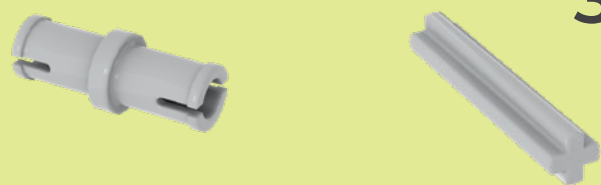
# 6



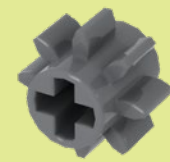


7

#3



8

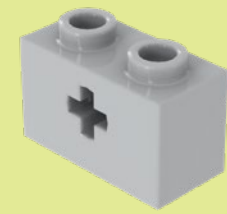


9



# 10

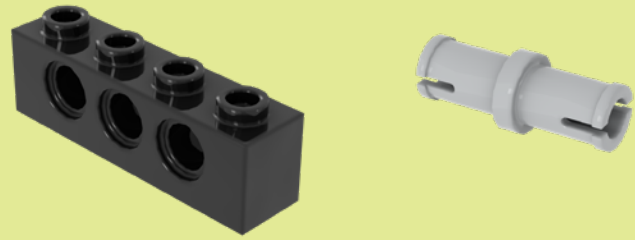
#4



#4



11



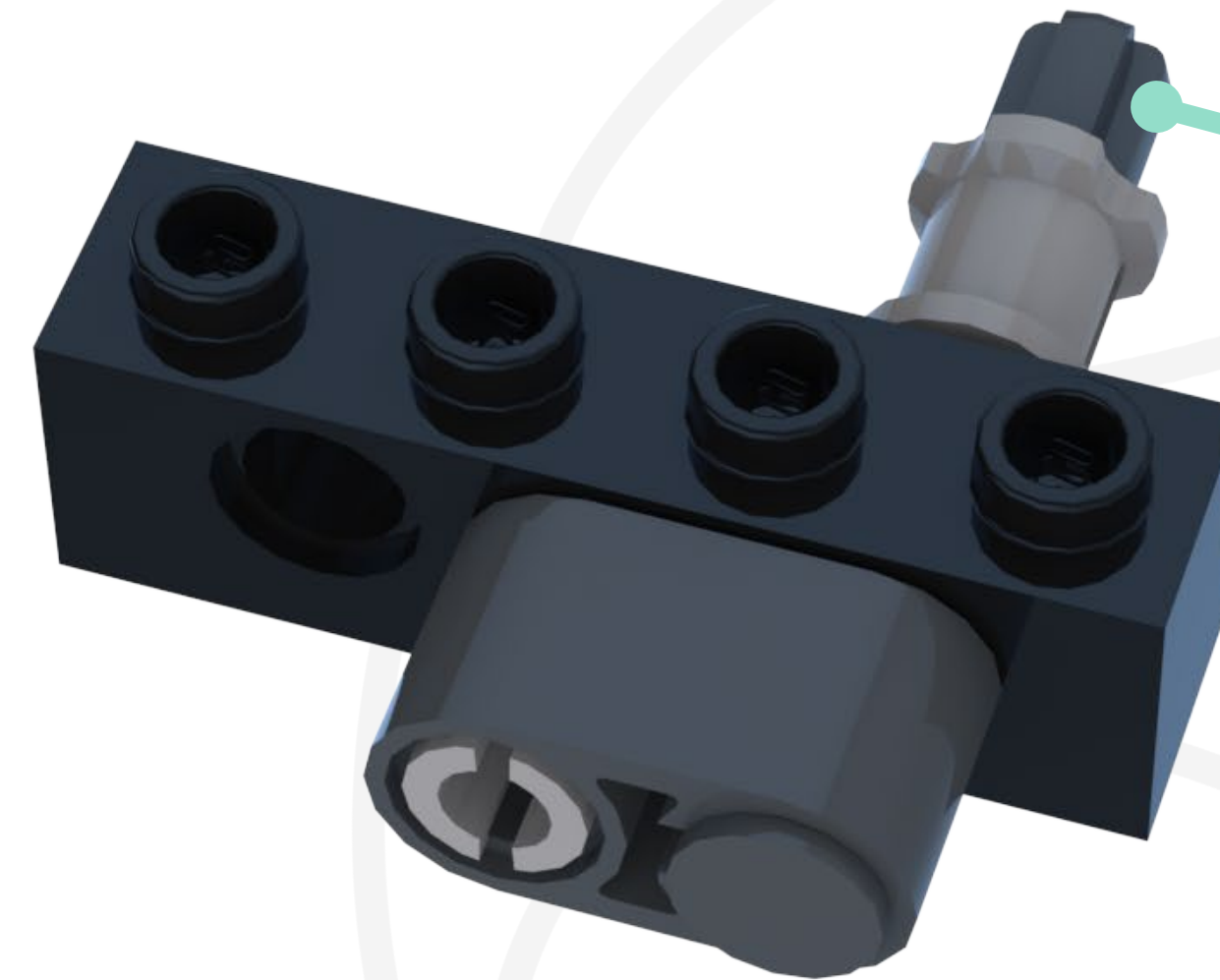
New Assembly



# 12



#4



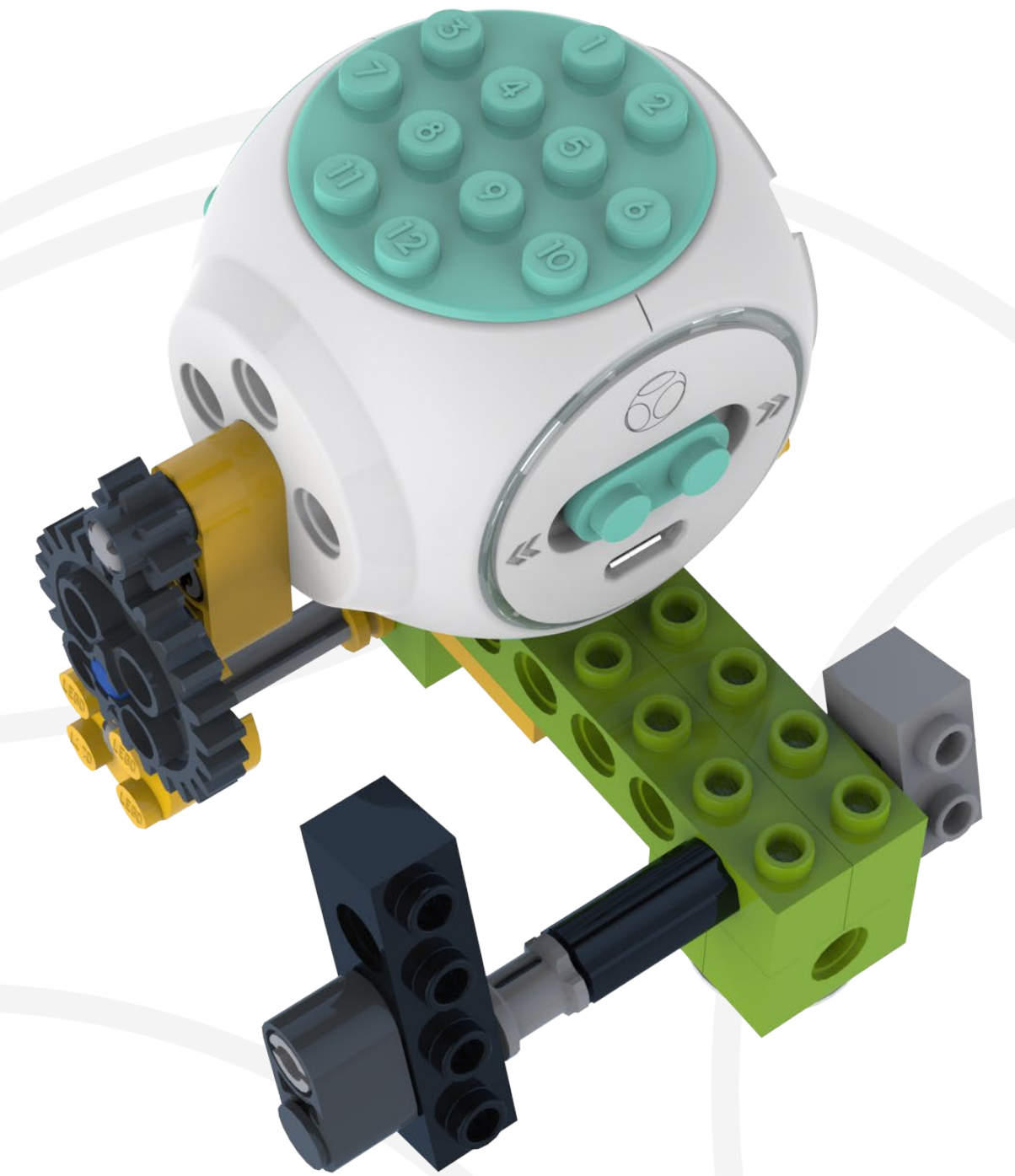
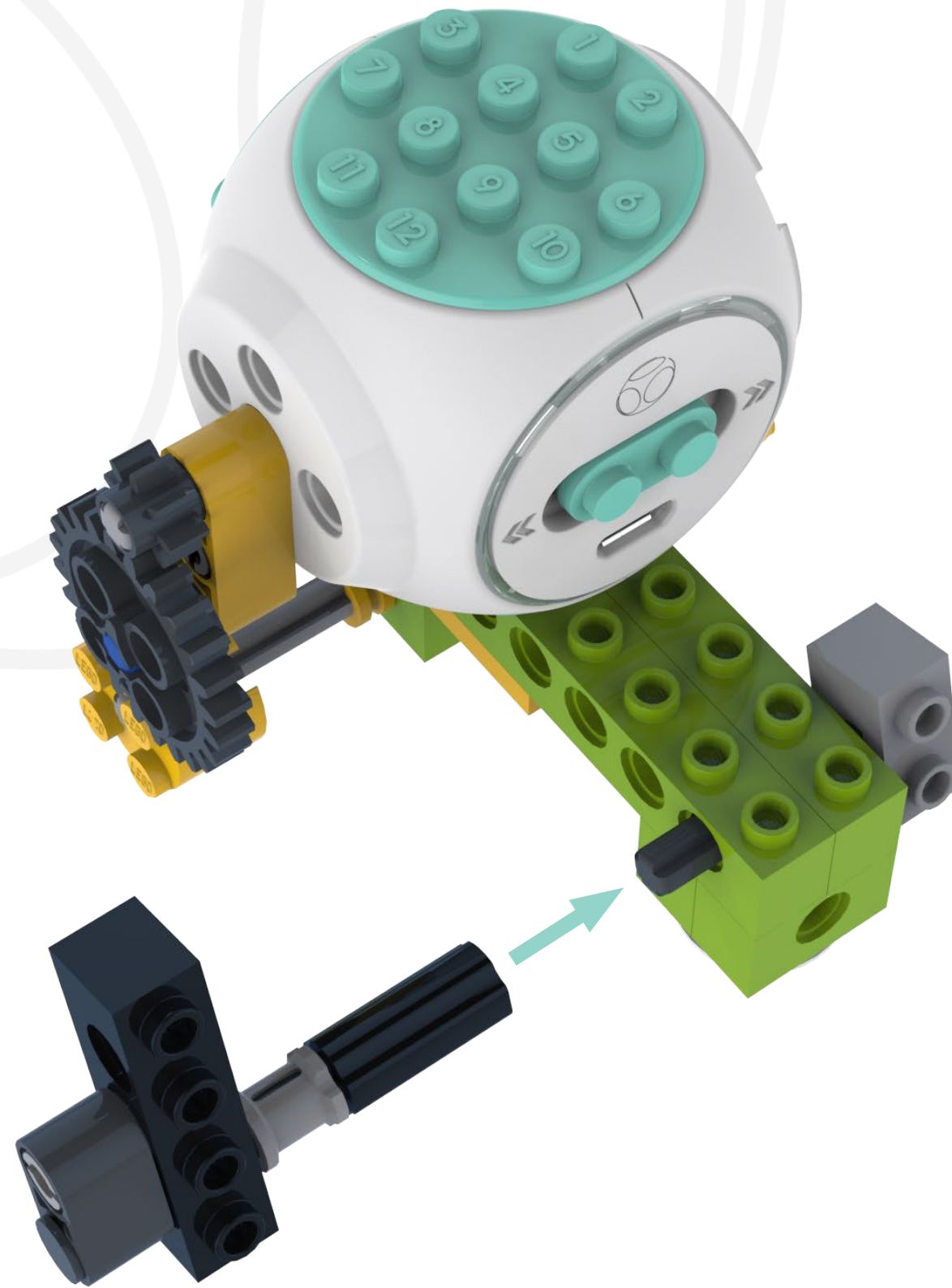
#4



13



Attach

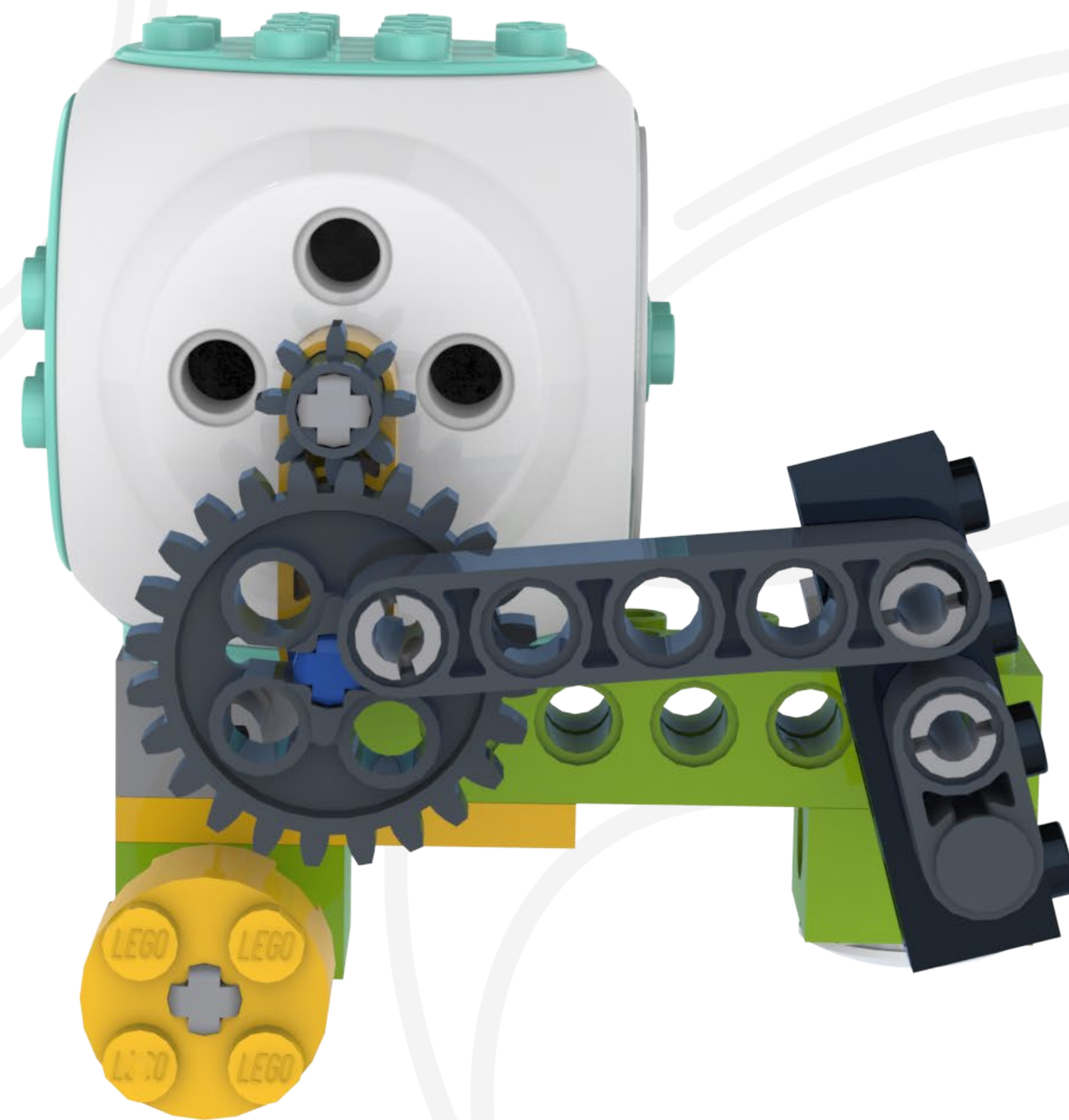
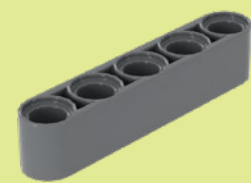


14

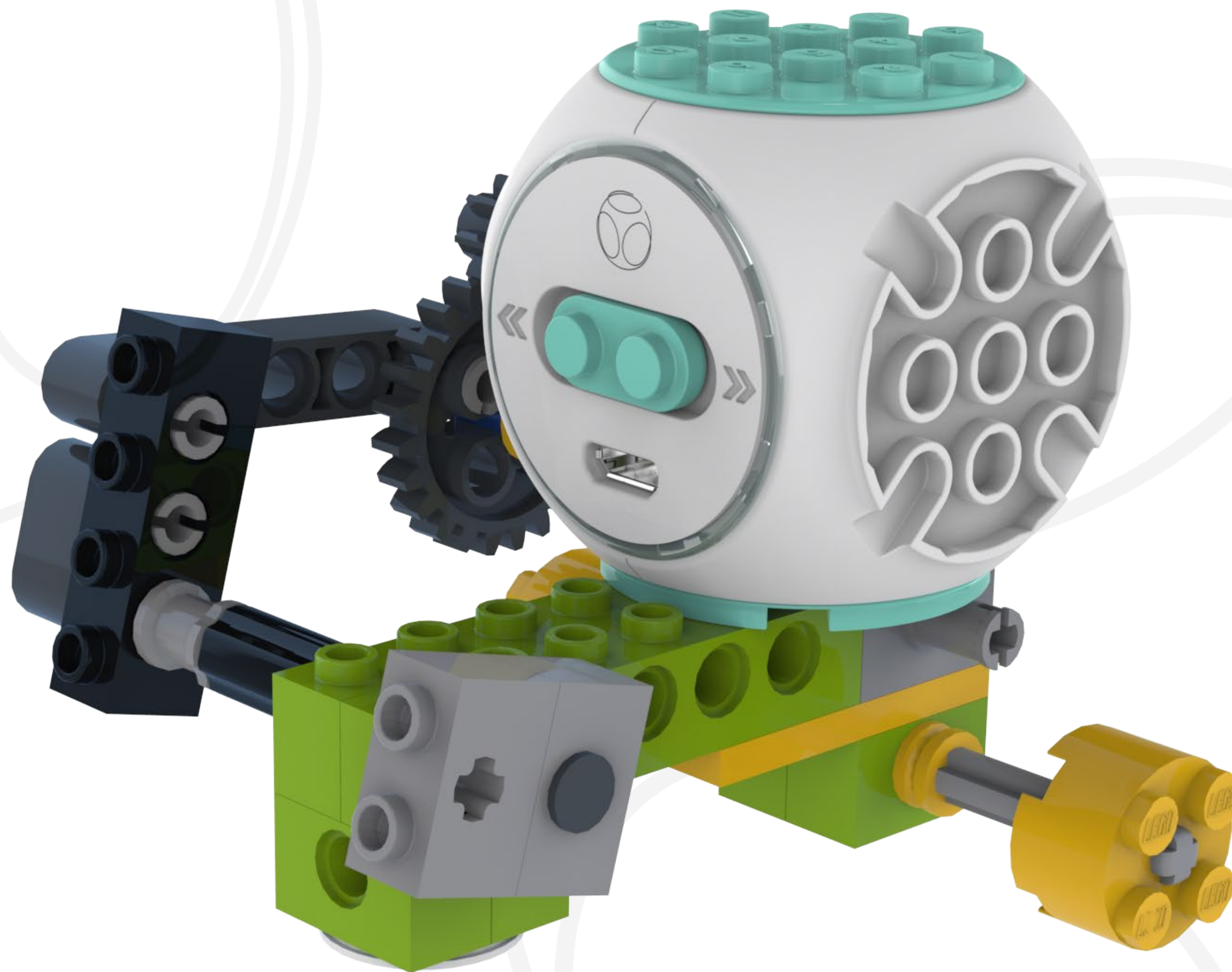
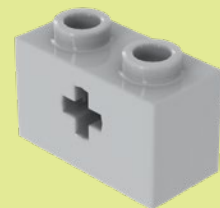




15



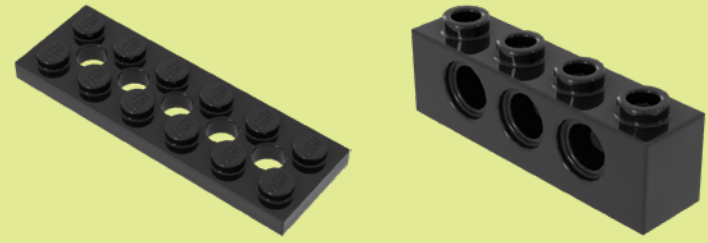
16



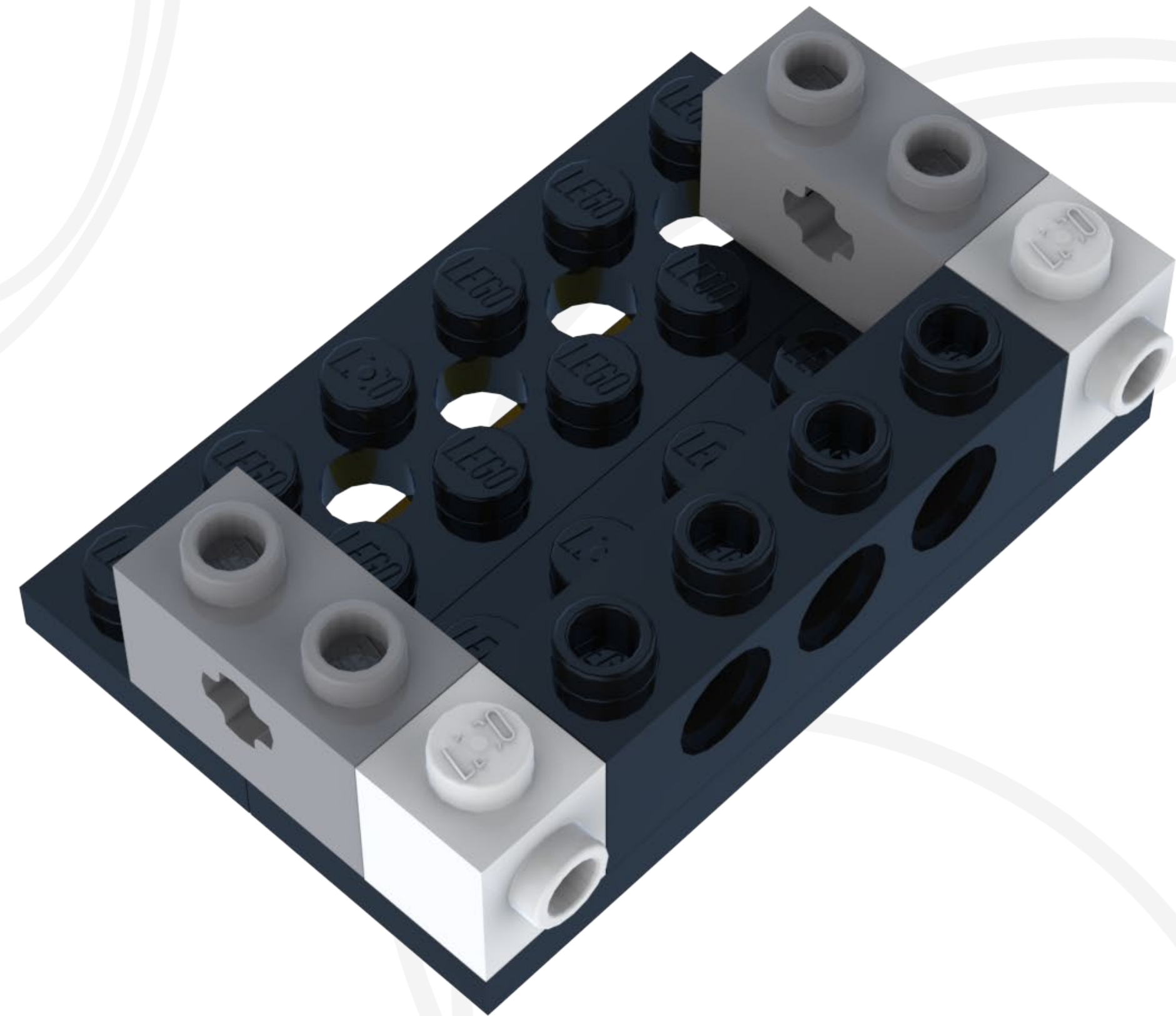
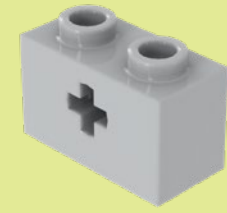
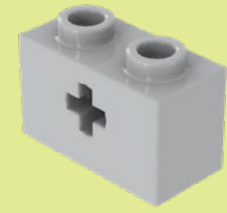
17



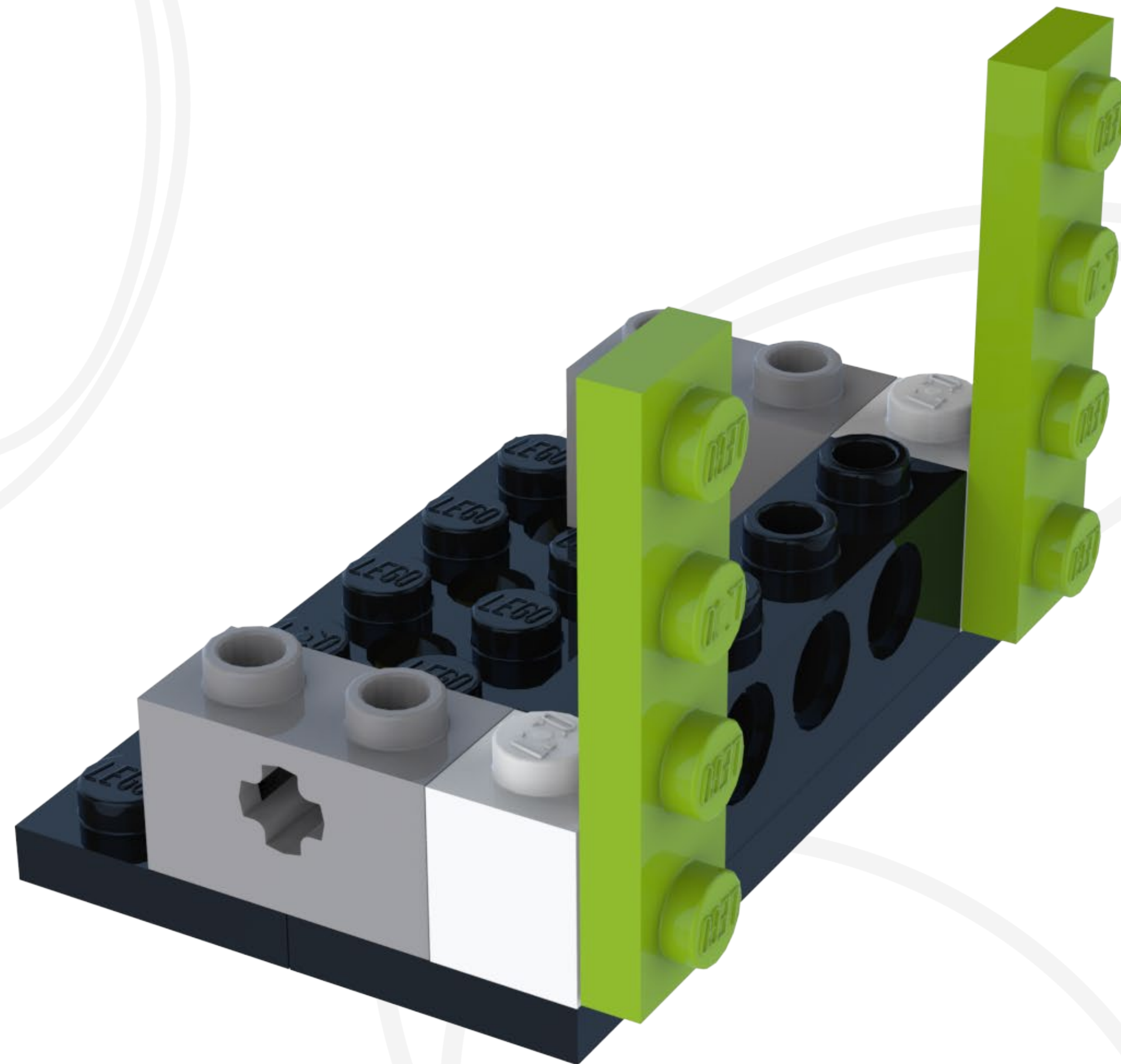
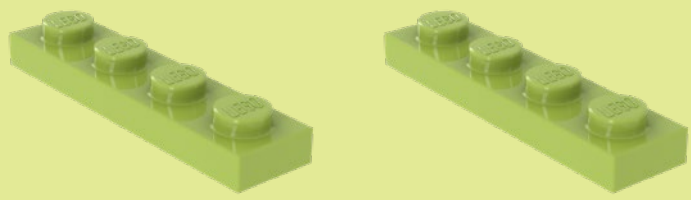
18



# 19



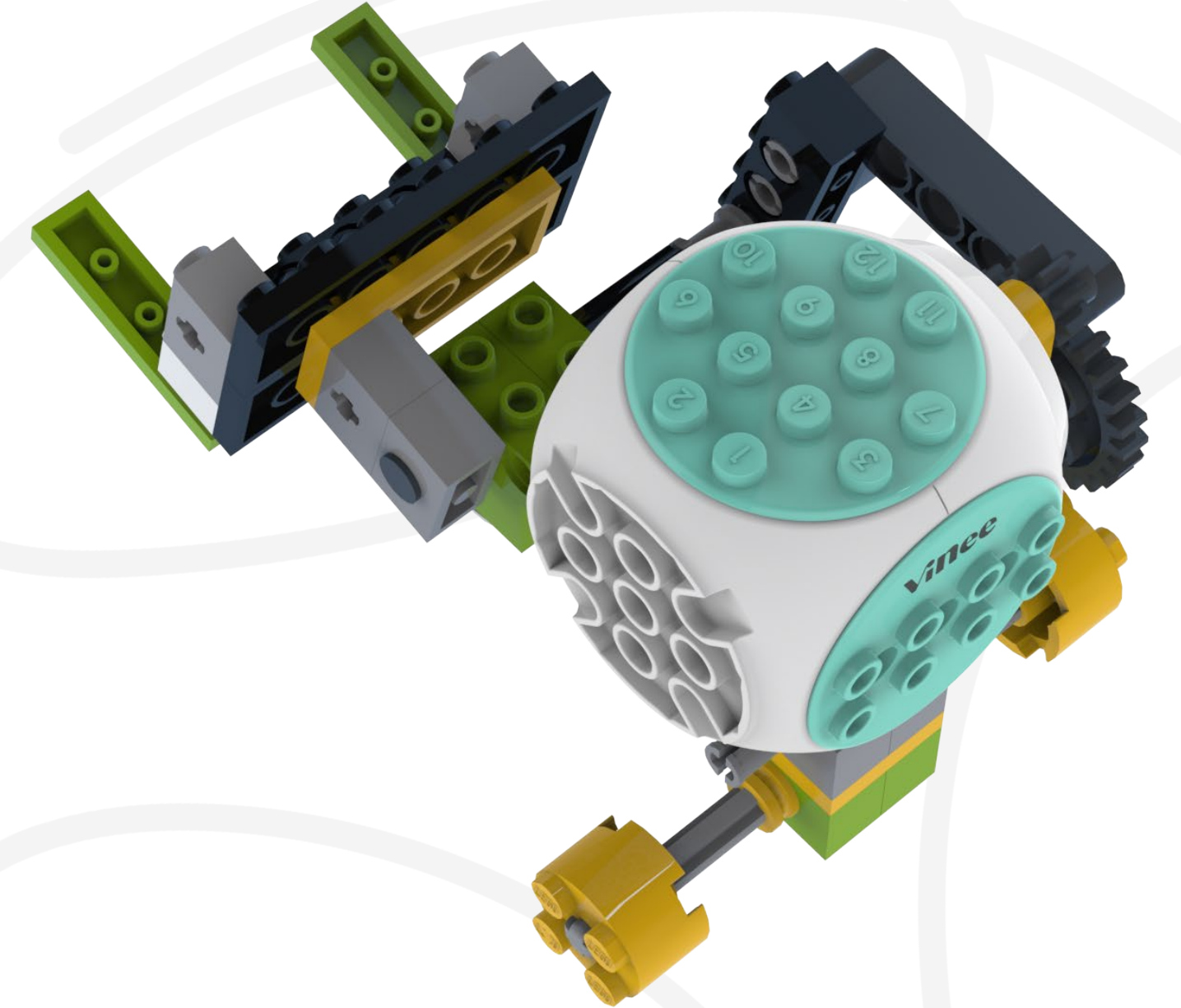
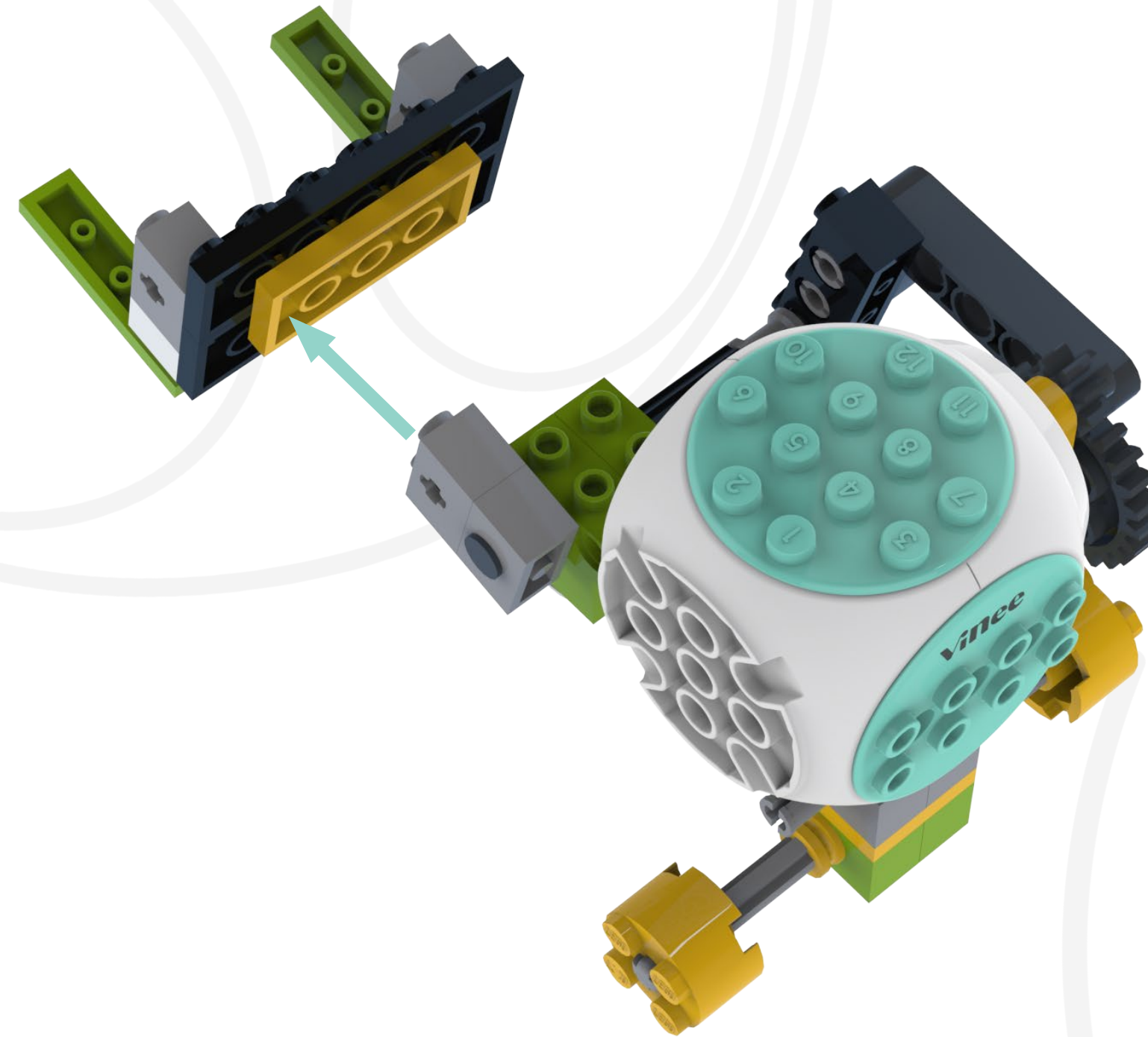
20



21



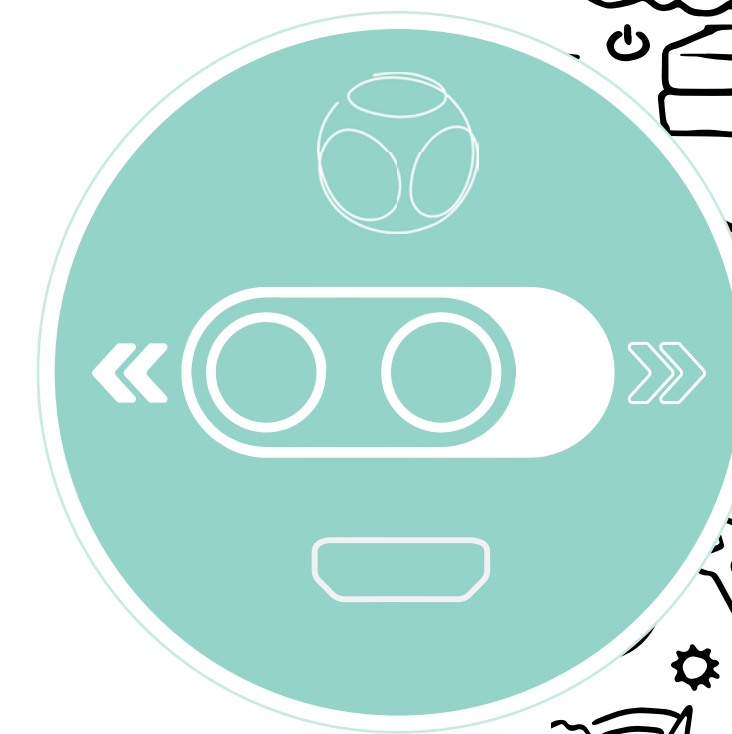
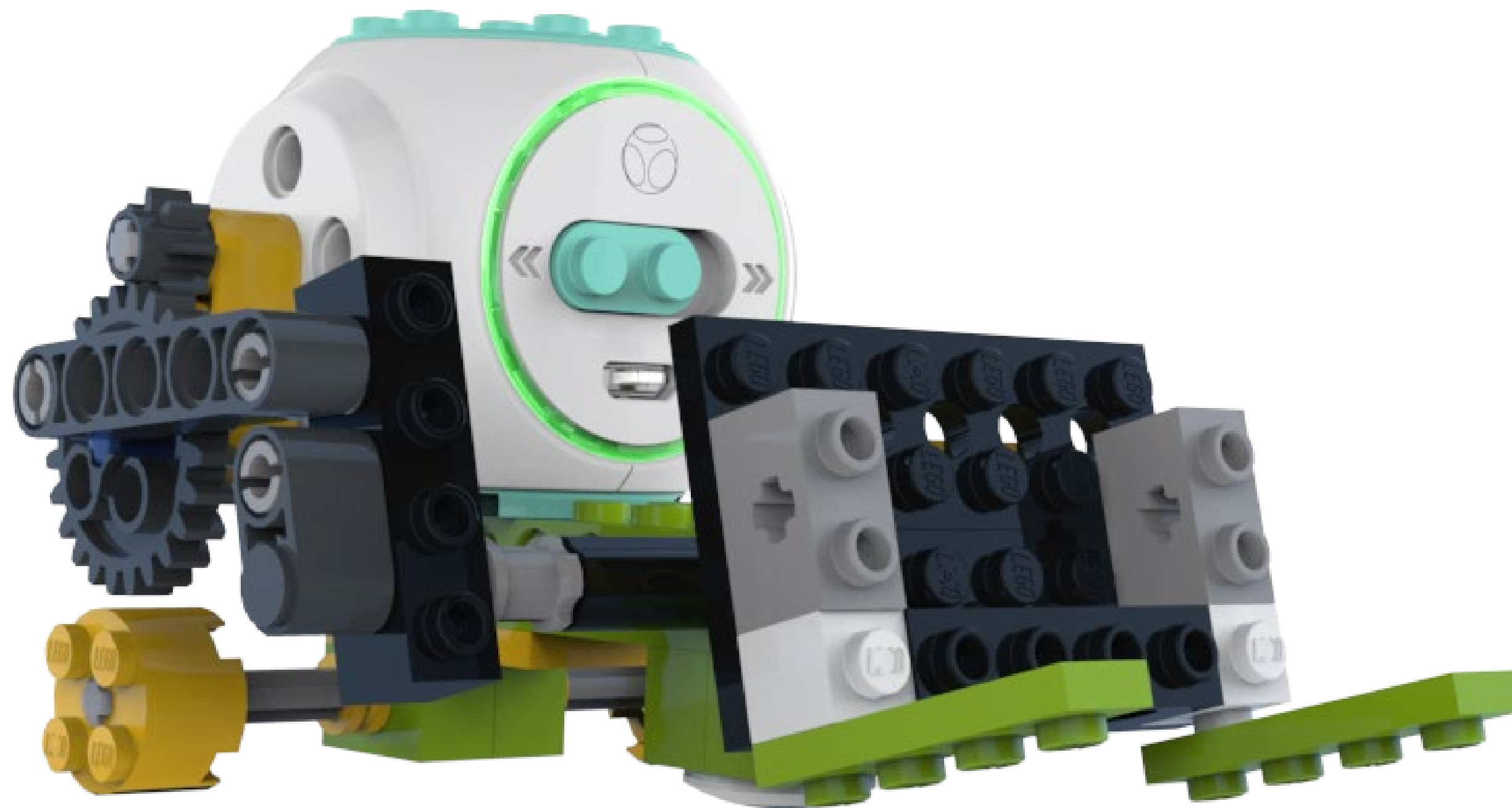
Attach!



# ! Finished



Make sure your build is correct before turning it on.





# Learn

## Lever

A lever is a long, sturdy body with three parts. It helps use lift heavy objects.

## Fulcrum

The fulcrum is the place where the lever pivots.

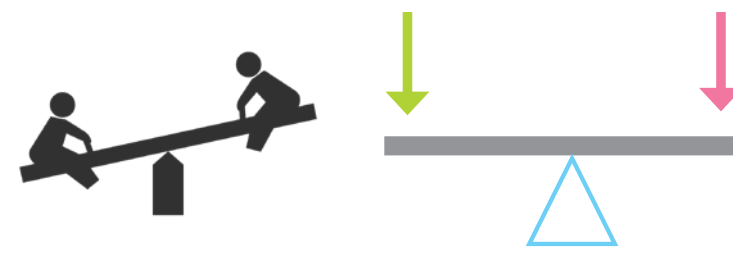
## Load

The load is the object that is being lifted.

## Force

In order to lift a load, there has to be a force acting to move the load.

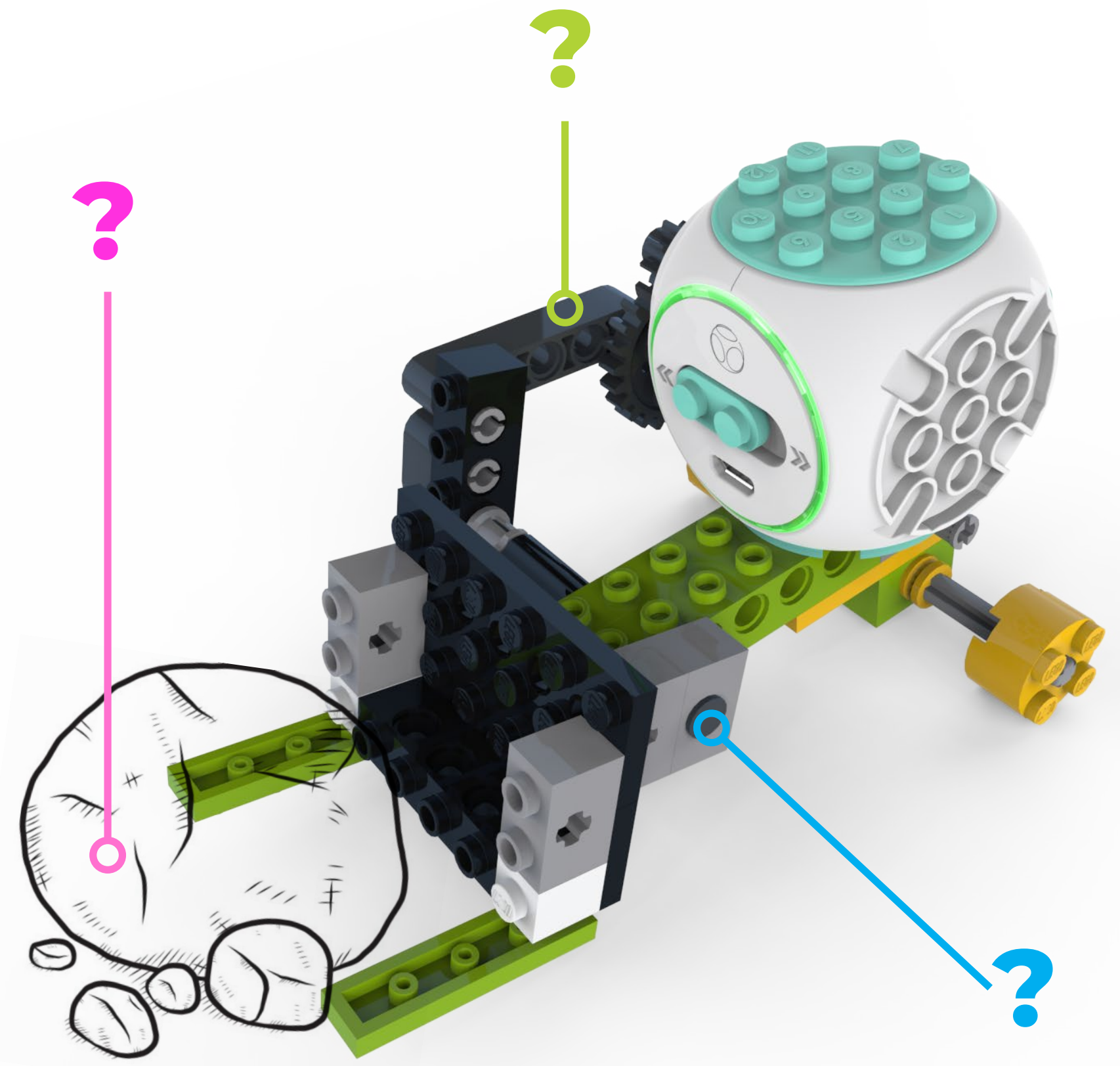
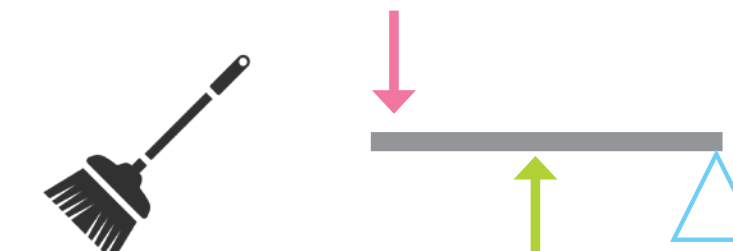
1st Class



2nd Class



3rd Class



# Task

1. Identify the fulcrum (pivot point), the force, and the load. Which class of lever is this Loader?
2. Think of examples of other levers you have seen. How do they make it easier to lift heavy objects?
3. Try placing objects on your loader to see if it will lift them.

# You put in the effort!



**vinee**

