

Two-Piece Toilet Installation Instruction



Safety Glasses



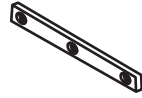
Putty Knife



Wrench



Tape Measure



Level



Flexible Supply Tube



Hacksaw

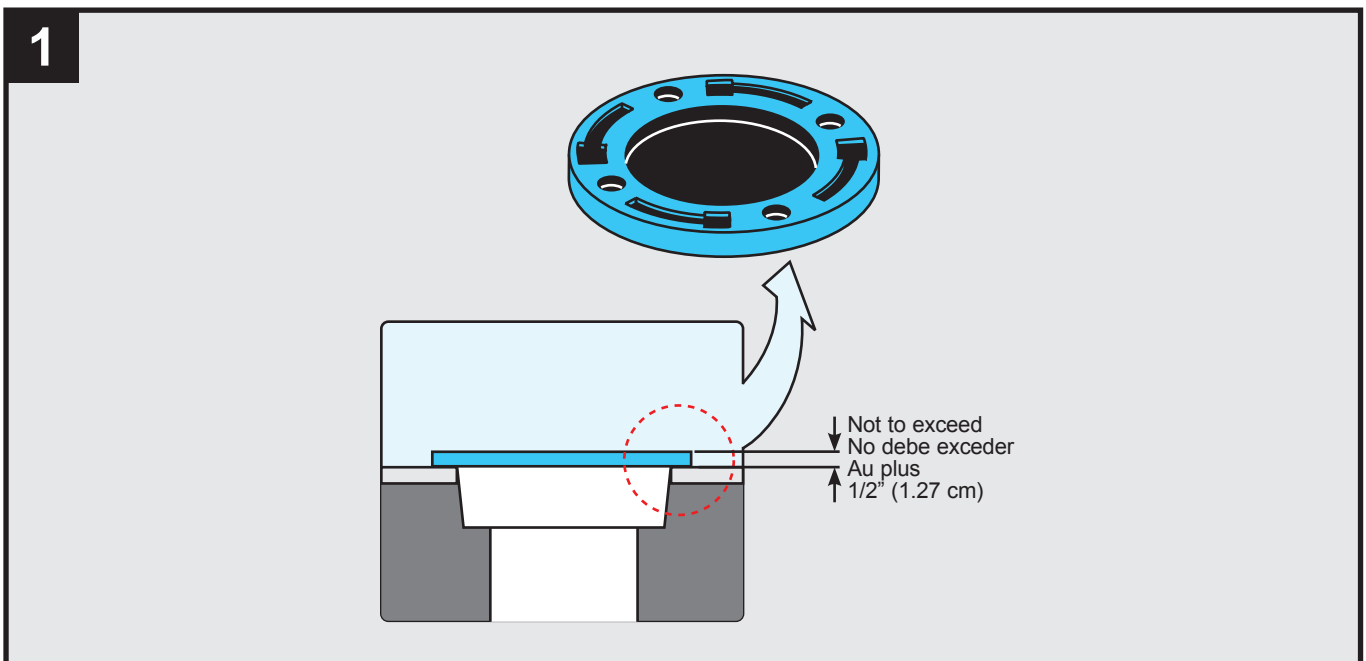


Screwdriver

(SUGGESTED TOOLS & MATERIALS)

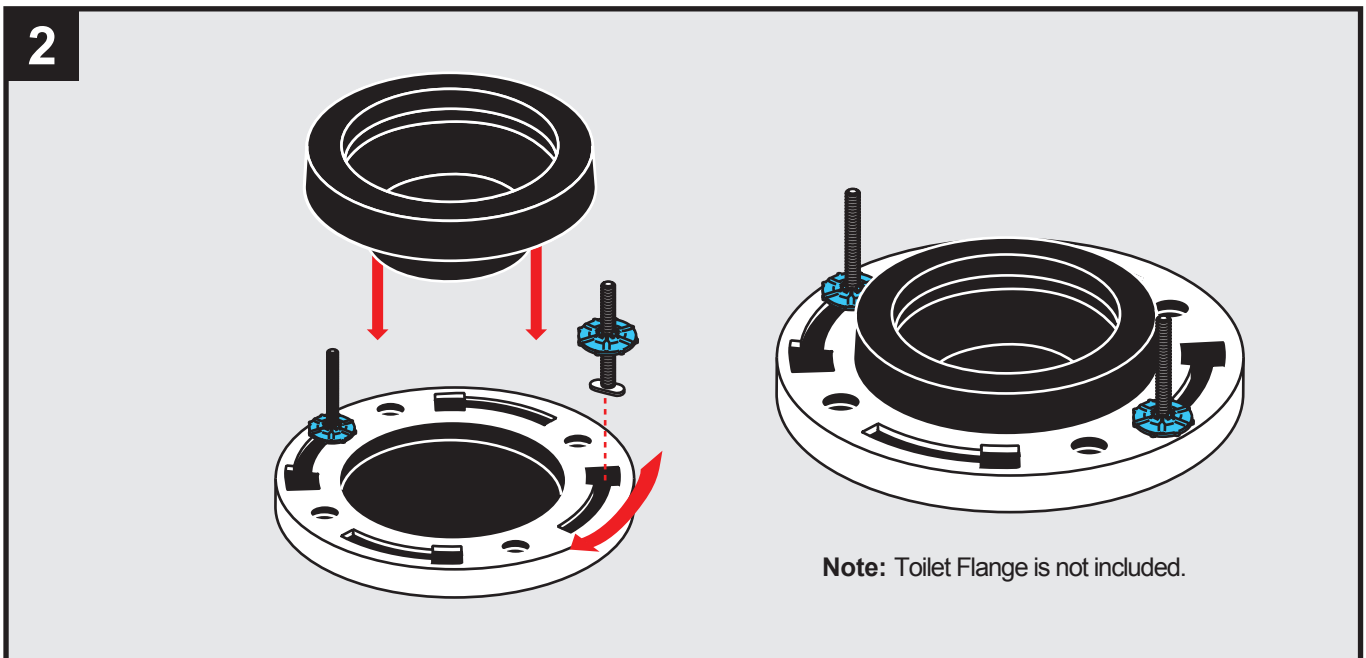
PART 1

1



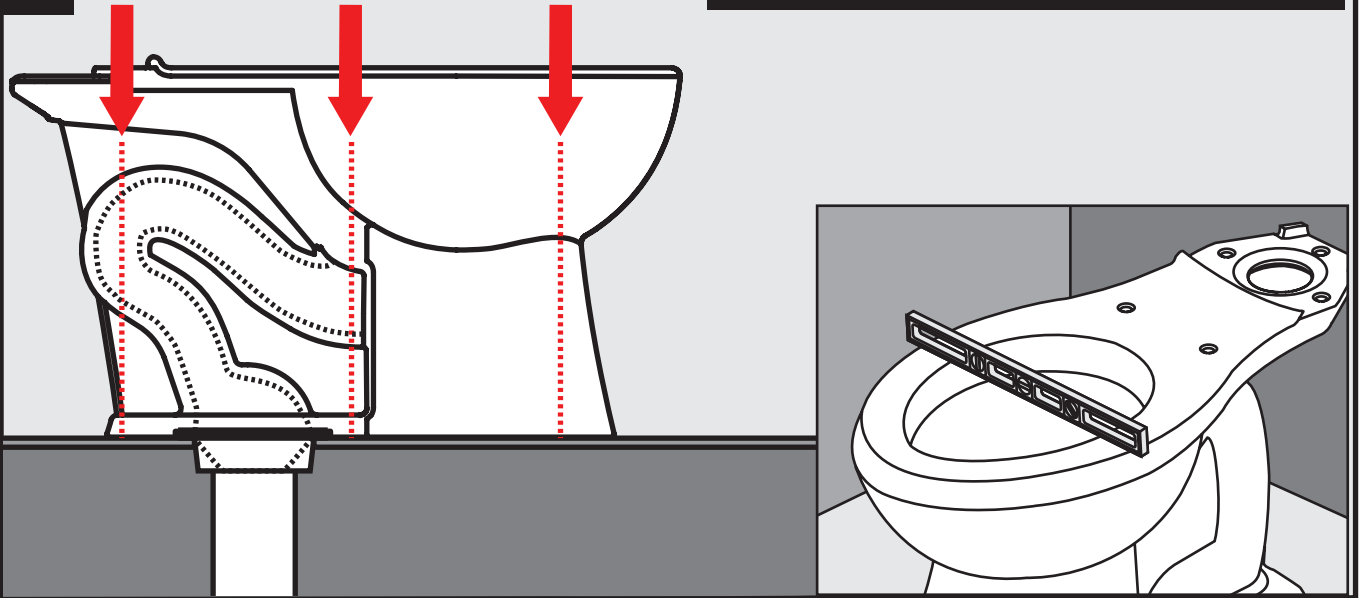
Ensure top surface of the drain flange is flush to the finished floor, or does not exceed 1/2" (1.27 cm) above the finished floor. Otherwise, consult with a plumbing professional.

2



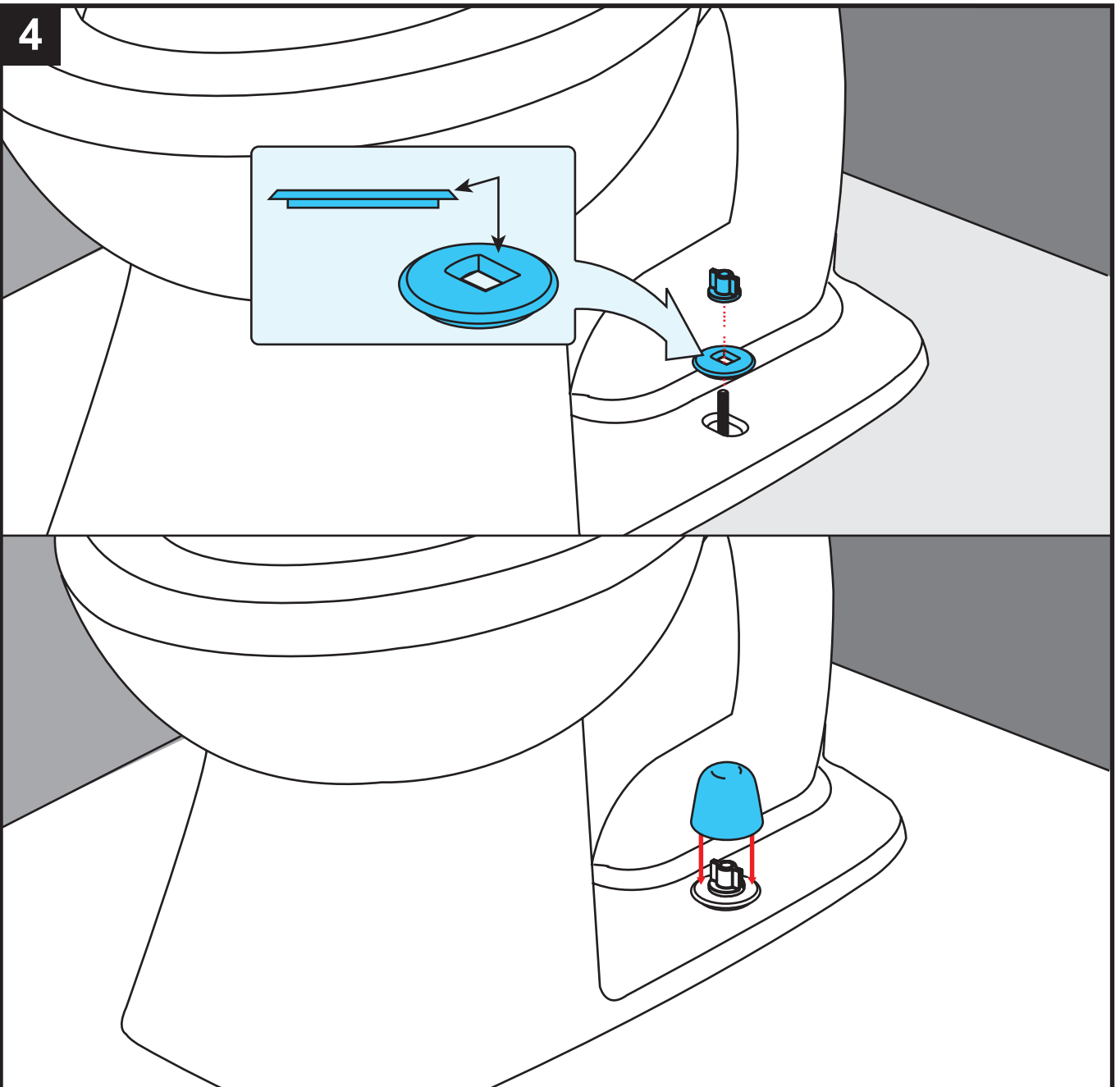
3

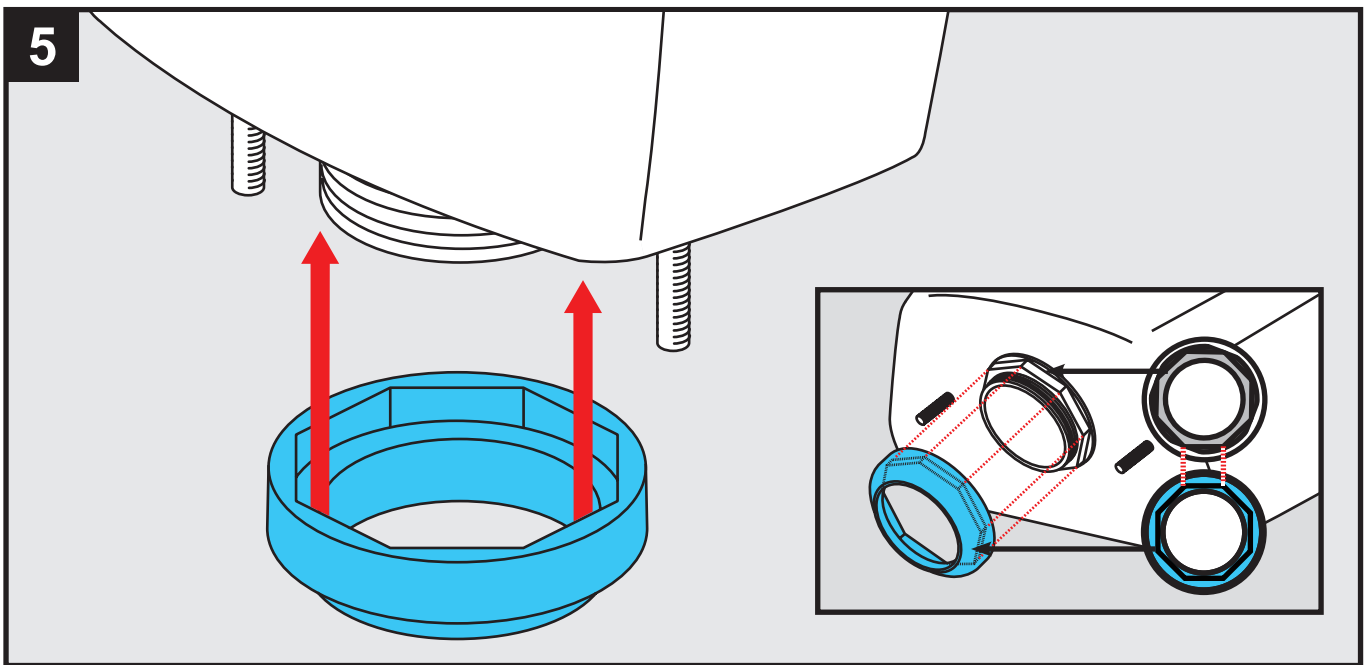
APPLY EVEN PRESSURE



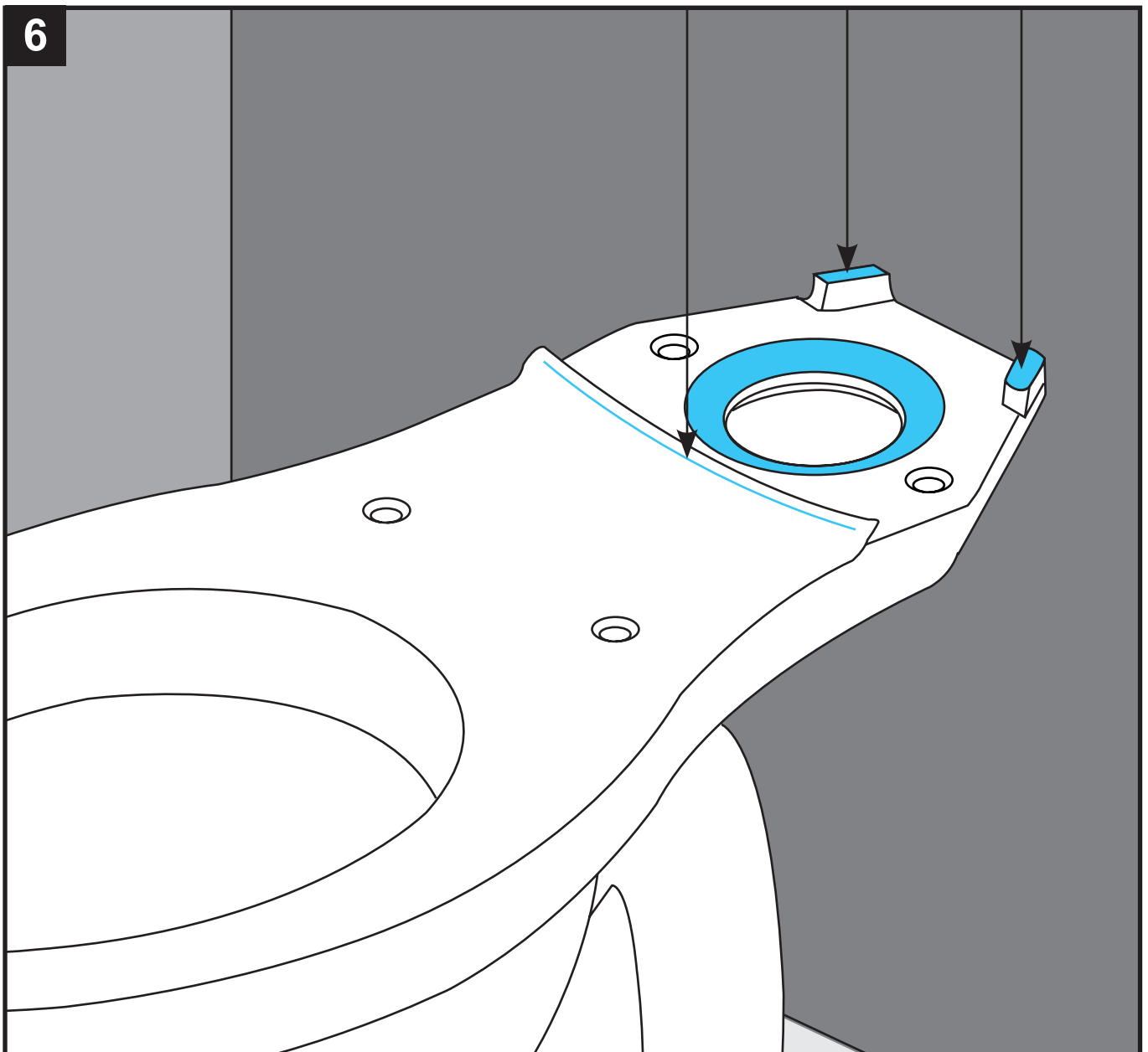
Carefully place toilet over the flange. Align horn and mounting holes on toilet with the wax ring and bolts on floor. Apply weight evenly until toilet is flush to the floor. **Do not move after placement or watertight seal may be broken.**

4



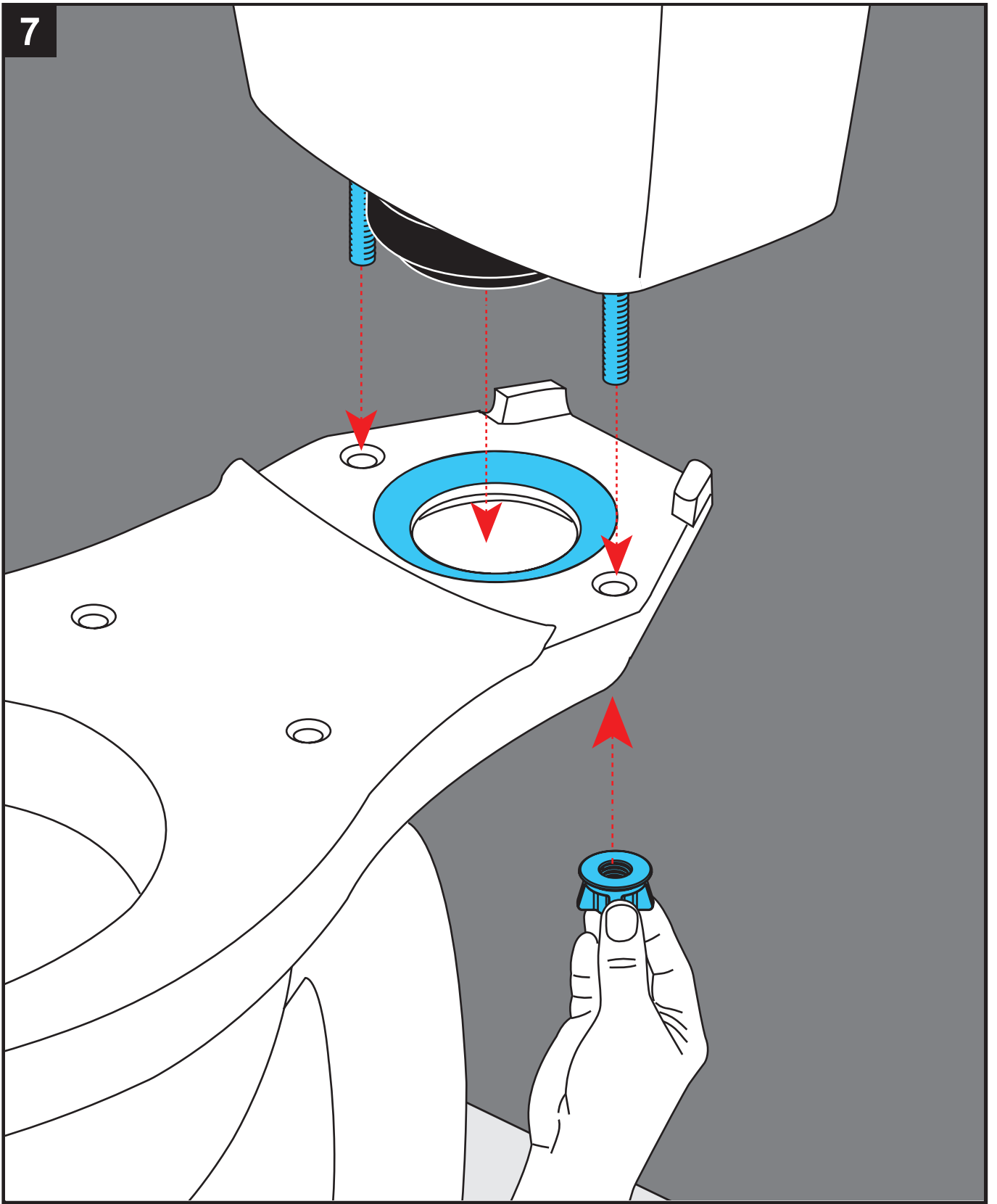


Align and seat the octagon shaped seal onto the octagon shaped nut. Be sure to align correctly. Align and attach octagon seal to octagon nut.

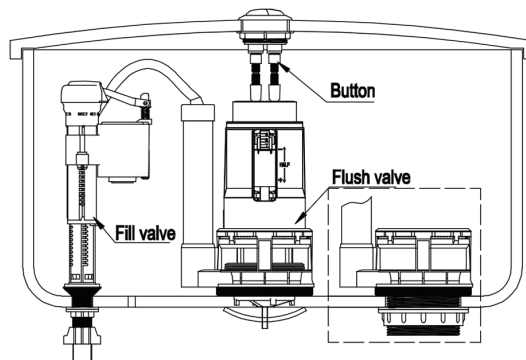


Place tank on bowl. Using the 2 wing nuts, tighten until the tank touches at least 3 contact areas of the bowl and does not rock.

7



1. The profile of installation

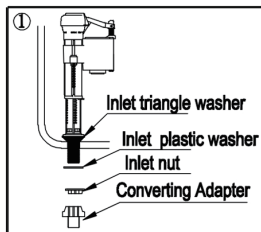


2.Steps

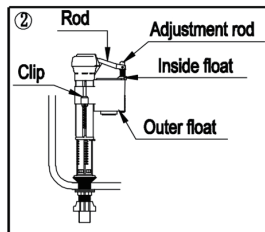
1>Preparation

Pls clean the tank and pipe concerned if it is old one.

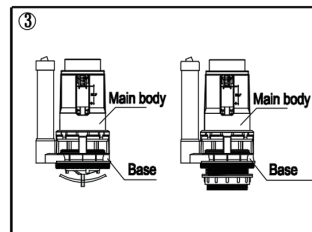
2>Installation



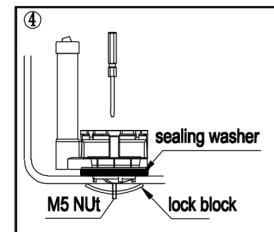
Take off the adapter, inlet nut and inlet plastic washer, insert the fill valve into inlet hole from inside of tank, re-assemble the plastic washer and inlet nut, adjust the fill valve properly, and tighten the inlet nut. Then twist the adapter tightly.



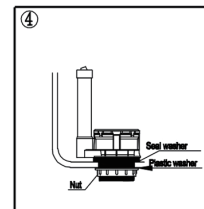
Water lever adjustment: Take out the clip and adjust outer float to proper position. Reinsert the clip, twist the adjustment rod to make the rod vertical naturally.



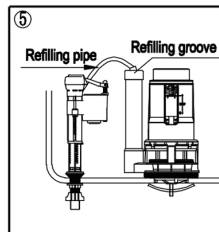
Twist the main body out of the base.



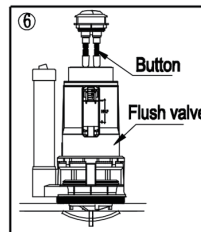
Twist 3 lock blocks to the end of M5 nuts respectively, insert the base to the outlet hole from inside tank, and adjust the base properly, then tighten the lock blocks with screw driver to make the sealing washer fully match the outlet hole.



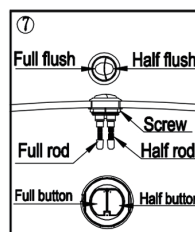
Screw the nut out of threads and take out of washers; Put the base into the tank hole and adjust to be the right position; And then screw the nut and seal washer into the threads, meanwhile keep the seal on the tank hole tightly.



Put the flush valve into the base and take the refilling pipe into the groove.



Insert the push button into the button hole, turn and adjust the push rod into proper height to make it just touch the top of full/half flush button.



Adjust the rod relevant to touch the buttons concerned.

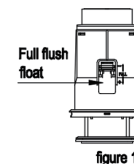


figure 1

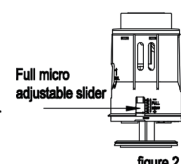


figure 2

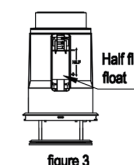


figure 3



figure 4

3. FLush volume adjustment

1>Adjust both full and half floats to the bottom position. Keep the openings fully open for both full and half micro adjustable sliders. (See figures 1-4)

2>Full flush volume adjustment: Fill the water tank up, press full flush push button. Raise the full float when larger flush volume (the higher the float is, the smaller the full flush volume is), and vice versa.

3>Half flush volume adjustment: Fill the water tank up, press half flush push button. Raise half float when larger flush volume (The higher the float is, the smaller the flush volume is), and vice versa.

4. Troubleshooting

1>Flush valve

NO.	Abnormal issues	Possible reason	Method
1	Outlet hole leaks	Flush valve is not positioned properly	Tighten the lock blocks
2	Flush valve leaks	Bottom surface of base is scratched or sealing washer is deformed	Replace base or sealing washer
3	Flush volume too large/small	Improper setting of half flush float and full micro adjustable slider	Reset the position of half flush float and full micro adjustable slider
4	Flush no water or litter water	Push rod is too short	Adjust the length of push rod

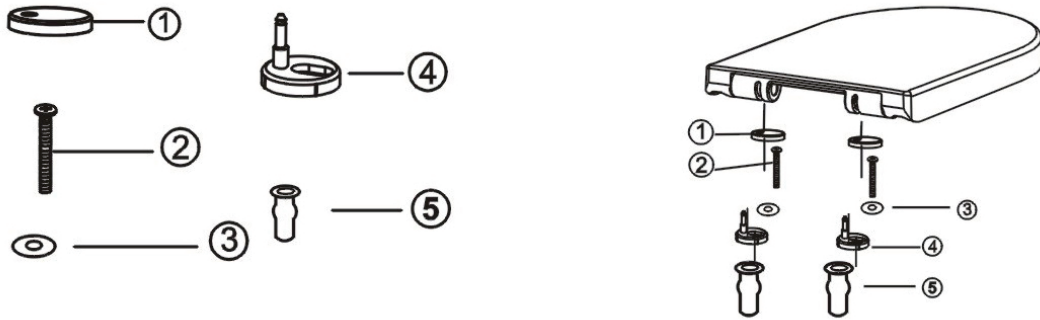
2. Fill valve

No.	Abnormal issues	Possible reason	Method
1	Valve does not fill the tank	Supply line jammed or float is held up in water stopping position	Clean debris in supply line; Adjust the rod into naturally vertical position by twist the adjustment rod
2	Tank fills too much or only partially	Improper position of float	Take off the clip and adjustment rod, reset the outer float into proper position, then refix the clip and adjustment rod
3	Inlet hole leaks	Inlet nut is loose or the ceramic hole is deformed	Tighten the inlet nut or repair the ceramic toilet
4	Water stops filling when water level lower than outer float	Debris or dirt on one-way valve	Bring out the one-way valve, clean the debris or dirt
5	Take too long/short time to fill the tank	The pressure of supply line is too low/high	Adjust the pressure of supply line
6	Refill tube sticks with other parts	The position of fill valve is not proper	Re-position Fill valve

Pls give the instruction to the final consumer; Pls regard the products as real careless of discrepancy as indicated pictures

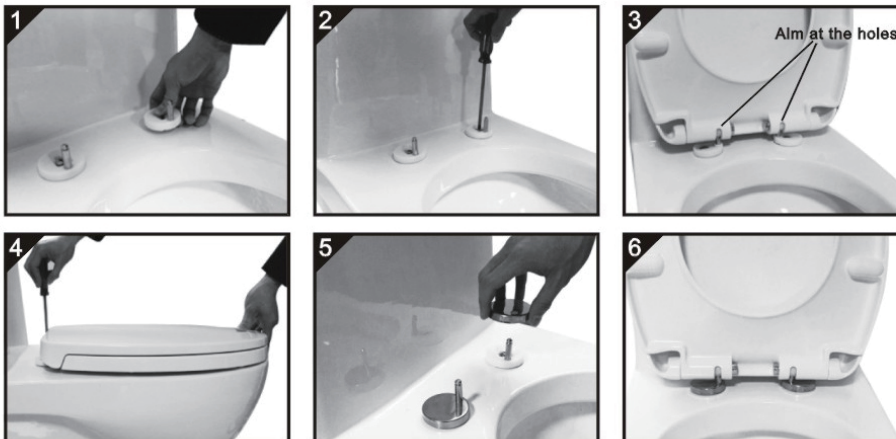
PART 3

1 Parts



NO.	Description	Qty
1.	Stainless Steel Hinge cap	2
2.	Bolt	2
3.	Washer	2
4.	Hinge Base	2
5.	Rubber Cork	2

2 Installation Guide



1. Insert the screw set on the hinge base through the holes on the pan.
2. Tighten the seat screws, but not fully allowing you movement to adjust the seat cover properly
3. Aim at the holes and adjust the hinge base to make the seat cover and pan match. Take out the seat cover once the installation position is confirmed.
4. Fix the hinge base on the pan firmly.
5. Put the cap into the hinge base.
6. Fix the seat cover into the hinge base.