

# HOROW®

## INSTALLATION MANUAL

### Farmhouse Stainless Steel Sink

www.horowbath.com Toll Free: 1 571-723-0338

Congratulations on the purchase of your new Horow plumbing fixture!

Please keep the box and packaging materials until your product is completely installed. If you have any questions, require technical assistance or have any problems with your product:



Please contact our Customer Service Team  
1 571-723-0338 / info@horowbath.com

Have the model number available and retain a copy of your receipt with purchase date for reference.

If for any reason this product does not meet your expectations, please be sure to repack this product in the original box and packaging material to avoid damage during transit.

2

#### Prior to Installation:

- Make sure that you have all necessary parts by checking the parts list. If any part is missing or damaged, please contact Horow Customer Service at 1 571-723-0338 for a replacement
- Inspect the sink prior to installation to make sure that it has not been damaged or during shipping
- Observe all plumbing and building codes according to your state requirements
- Not recommended to be installed with laminate countertop

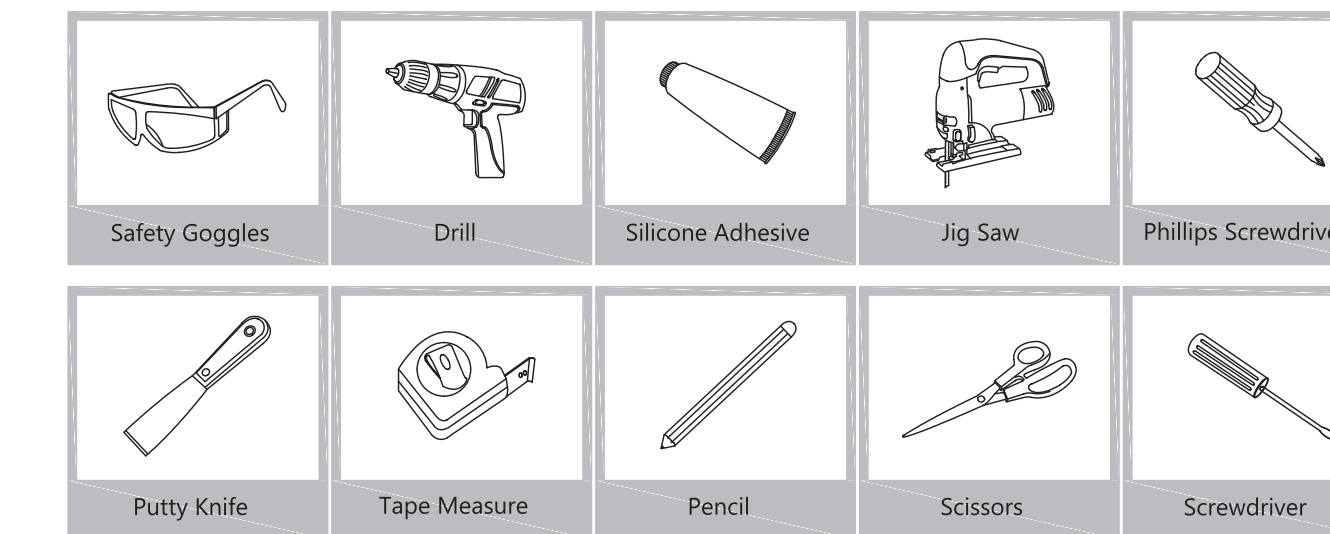
For technical assistance or replacement parts, please contact Horow Customer Service and one of our representatives will be happy to help:  
Toll-Free: 1 571-723-0338 / info@horowbath.com

The step-by-step guidelines in the installation instructions are a general reference for installing a Horow sink.

Should there be any discrepancies, Horow cannot be held liable. It is recommended to install all Horow products by hiring a licensed professional.

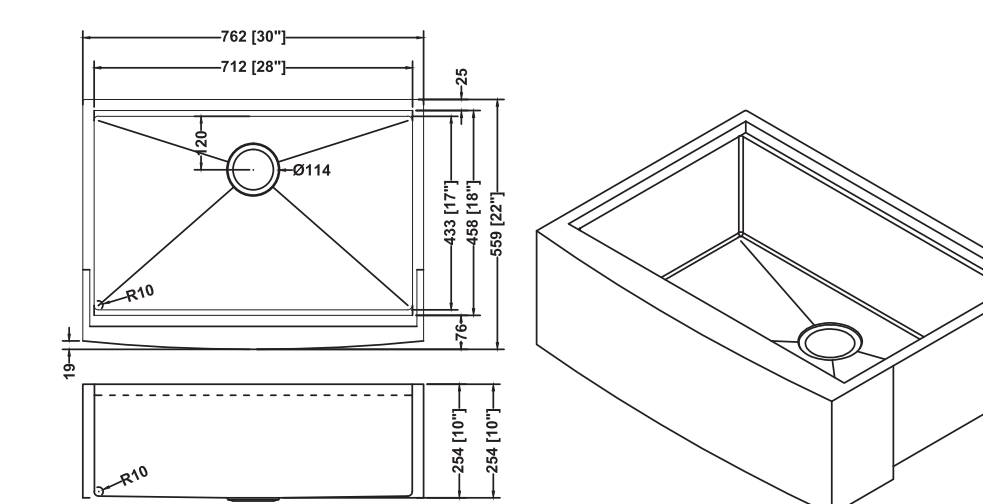
3

#### Tools you will need:



**NOTE:** Specialized tools may be necessary to install Horow Stainless Steel Kitchen sinks with countertop materials other than wood, marble or granite.

#### Dimensions:



30" x 22" x 10"

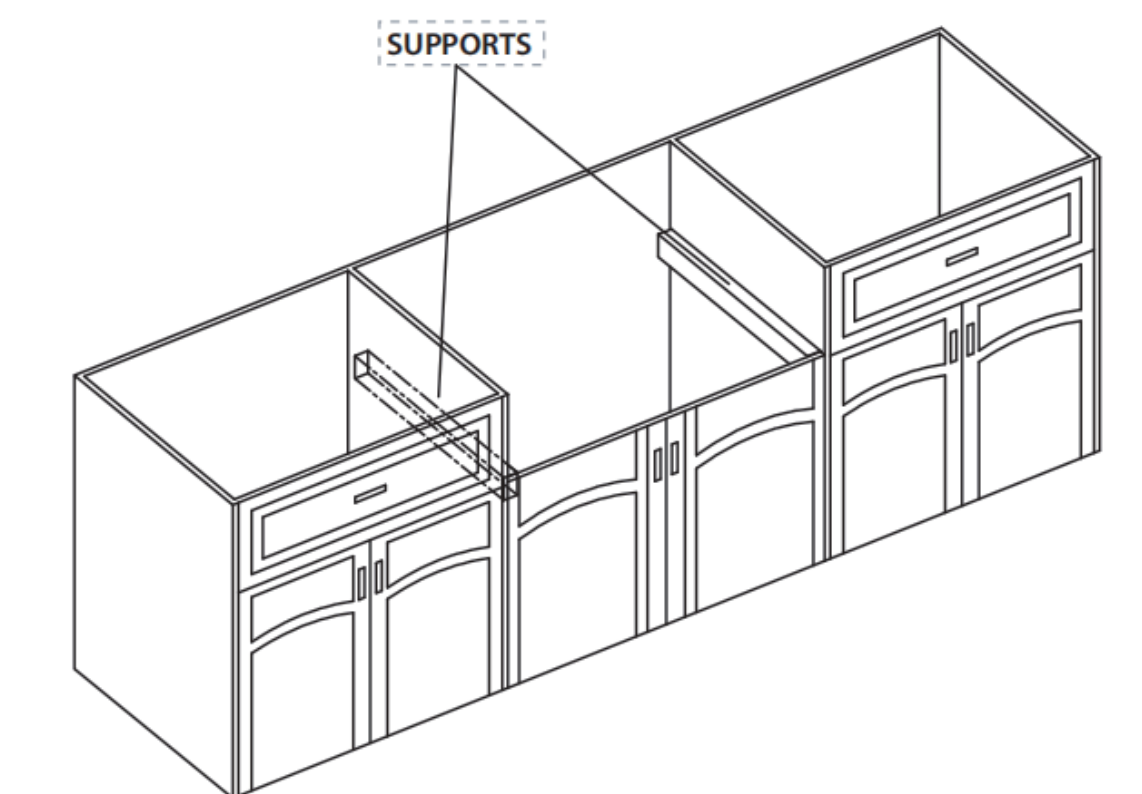
4

#### 1. Measure & Build Supports

- Measure the actual height of apron
- Build supports on inside of cabinet based on sink measurements

#### Installer Tip: Support Options

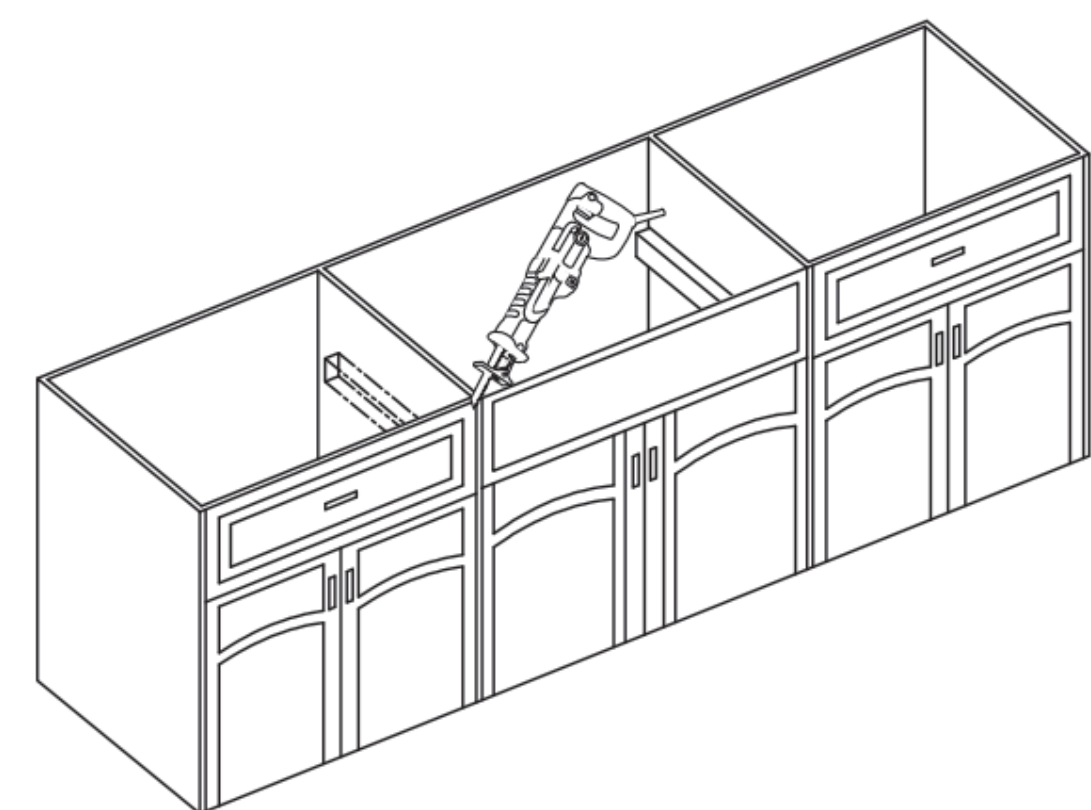
- 1 1/4" Angle Irons
- (2) 2"x4"
- 3/4" Plywood



5

#### 2. Cut Cabinet Front

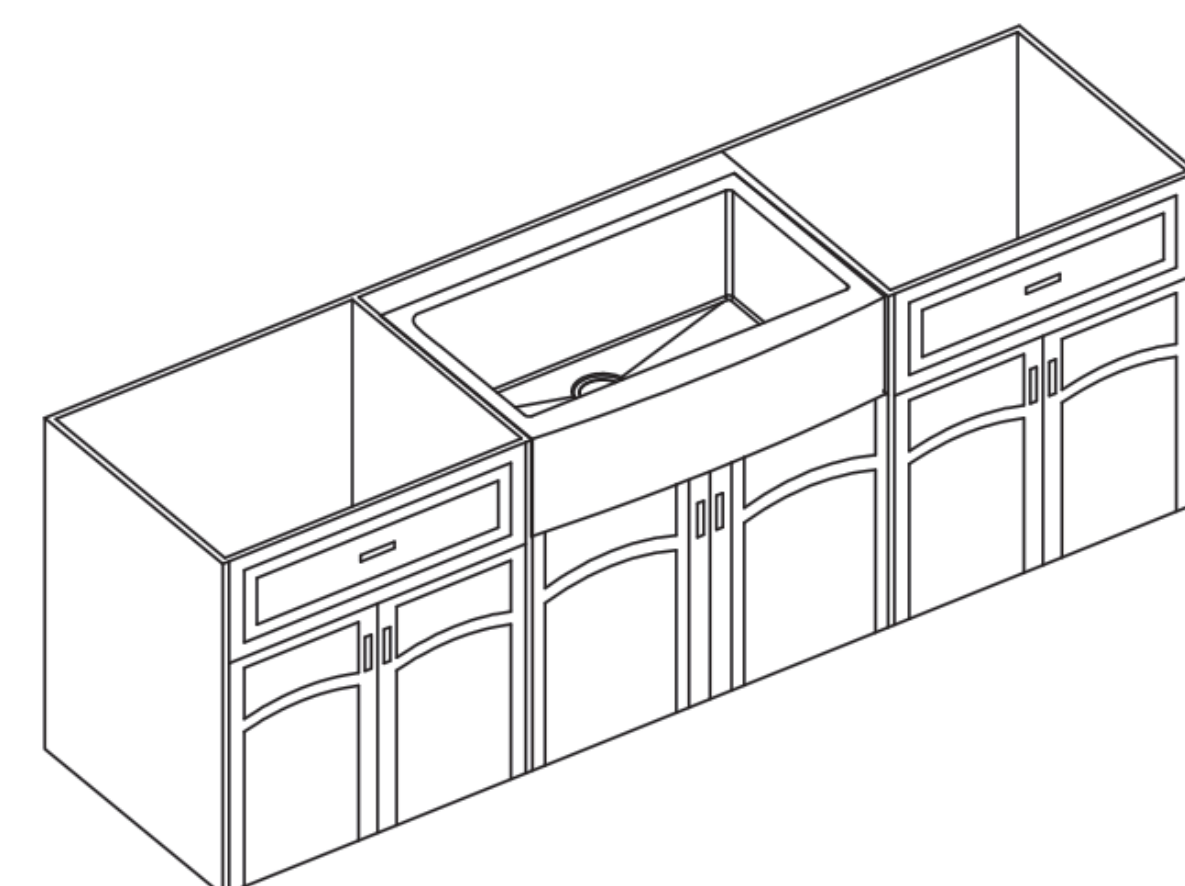
- Measure height of apron front. Add 1/16" to the dimension when you mark base cabinet front cutout. Use jigsaw to cut



6

#### 3. Install Sink

- Place sink in opening. The weight of sink should be sustained by the built supports
- Make sure sink is leveled from front to back and side to side
- Uses silicone to fill in gaps where necessary

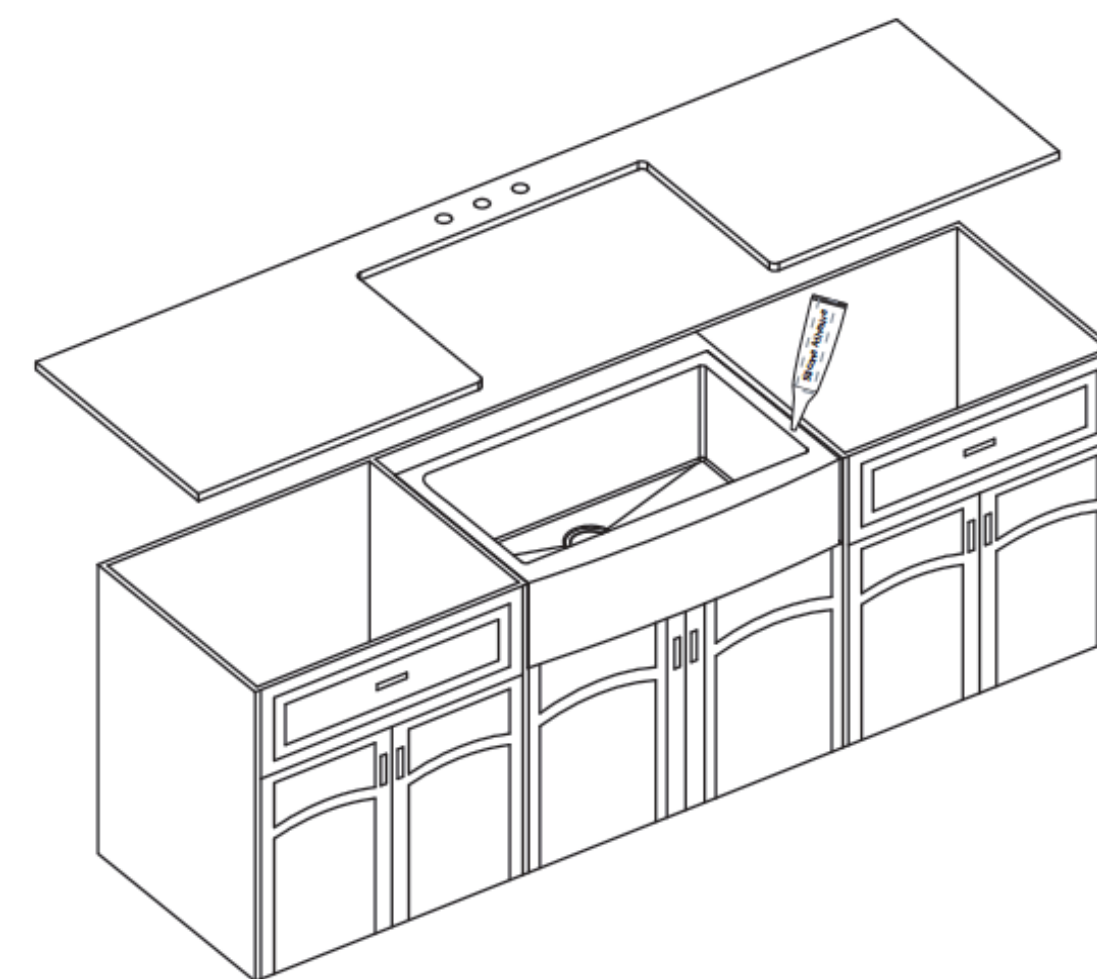


7

#### 4. Cut Countertop

- Use a bead of silicone (or preferred adhesive) around the rim of the sink. Check the alignment of the sink to the cutout in the countertop. Place countertop cutout hole over sink and press firmly

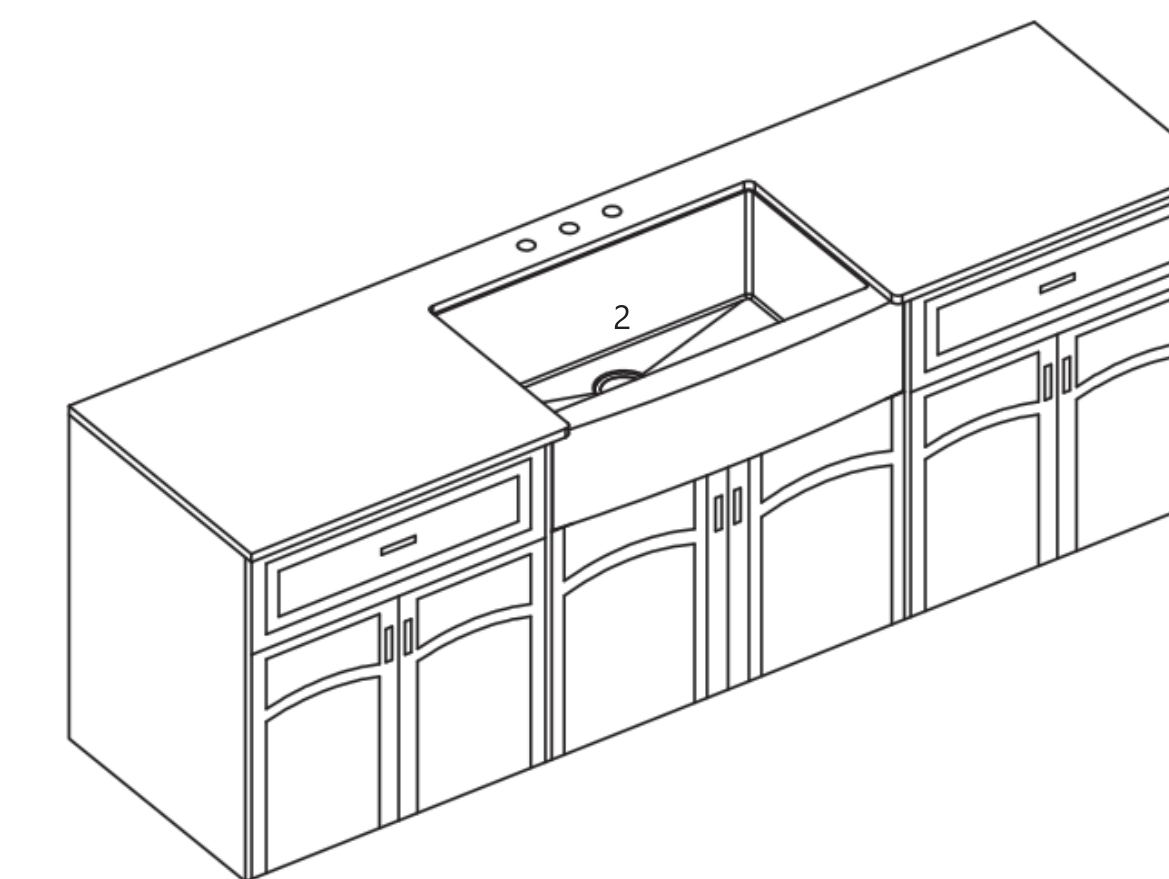
**Installer Tip:** Use acetone or rubbing alcohol to remove any excess sealant



8

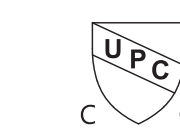
#### 5. Installing Plumbing Fixtures

- Connect drain, trap to drain and water supply connections to the faucet according to manufacturer's instruction.
- Run water into sink and check for leaks



9

#### Codes/Standards Applicable



#### Restrictions

This warranty does not cover instances of negligence, misuse, abuse, improper installation, carelessness, accident, hard water or mineral deposits, exposure to corrosive materials, misapplication, damages caused by improper maintenance, alteration of the product, or failure to follow care or installation instructions enclosed with your product. Avoid using abrasive cleaners such as powders, bleach, ammonia, alcohol, or chlorine. Avoid using abrasive pads, steel wool, or wire brushes, as these will damage and wear down the finish.

This warranty does not apply to Products that have not been installed or operated in accordance with instructions supplied by Horow and all applicable rules, regulations, and legislation pertaining to such installations.

This warranty does not cover labor charges or costs of removal and reinstallation of said product. This warranty does not allow recovery of incidental or consequential damages, such as loss of use, delay, property damage, or other consequential damages, and Horow accepts no liability for such damages.

This warranty does not cover Marine or Outdoor Installation.

This warranty does not cover any free gifts included with purchase.

Except as otherwise provided above, Horow makes no warranties, expressed or implied, including warranties of merchantability and fitness for a particular purpose, or compliance with any code.

Shipping charges will be covered for the first (1) year of the warranted replacement part or product (HI, AK, and Puerto Rico shipping charges may apply). International shipping fees are not included.

10