



INSTALLATION INSTRUCTIONS
Part # JCP-22-NPT18PO38-NPT18
Port Adapter Fitting

Please read these instructions completely before beginning installation.

KIT CONTENTS

QTY.	DESCRIPTION
1	Port adapter fitting

Operation Summary

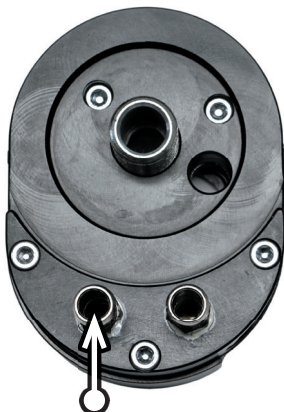
Fitting adapts 1/8" NPT port to 90° and creates straight 3/8" push-on hose connection. Machined from billet aluminum and finished with durable anodizing.

Use to adapt Jagg oil filter adapters with NPT1/8" female ports (e.g., Jagg #4700 or #4701) to receive Jagg Automatic Fan Switch (#TS180, #TS190, #TS200).

NOTE: Ensure any accessory installed into the 90° 1/8" NPT port does not impede the oil's flow.

Install port adapter in Jagg offset oil filter adapter

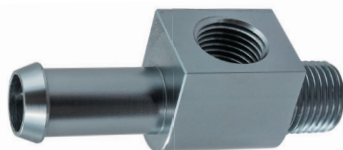
- Using a 7/16" deep-well socket or adjustable wrench, remove the 3/8" push-on fitting from the left port of the oil filter adapter.
- Apply Teflon pipe sealant (e.g., Loctite 592) to the 1/8" NPT male pipe threads on the new port adapter fitting.



Remove push-on fitting from the left side of the Jagg oil filter adapter

NOTE: 1/8" NPT pipe threads should be installed to finger-tight, and then tightened an additional 2-to-2.5 turns.

Before fully tightening, test fit the front half of the offset oil filter adapter on the vehicle to determine the proper "clocking" orientation of the port adapter fitting that will allow clearance around any NPT accessory that will be installed in the fitting.



- Apply Teflon pipe sealant to the 1/8" NPT male pipe thread on the NPT accessory to be installed in the port adapter fitting.
- Install the NPT accessory into the port adapter fitting using the same method as in Step 2.

NOTE: Use a back-up wrench on the port adapter fitting to relieve any stress that installation of the accessory might place on the port adapter fitting when fully tightening the accessory.

Install or reinstall Jagg offset oil filter adapter

- Install new large O-ring onto the rear half the offset oil filter adapter.
- Clean the oil filter landing on the engine thoroughly and ensure the flat sealing surface of the large O-ring is free of debris. Do not apply oil to this O-ring.
- Place the back half of the adapter over the threaded oil filter stem.
- If an anti-rotation device is being used, tighten the 1" lock nut to finger-tight and proceed now to step 9. If an anti-rotation device is not being used, skip to step 10.
- Place the front half of the adapter over the rear half and rotate this assembly counter-clockwise until the anti-rotation device makes contact with the engine case.
- Remove the front half of the adapter and hold the back half of the adapter in its current orientation. Use 1" deep well socket to securely tighten the 1" lock nut so the back half of the adapter will not rotate and the sealing O-ring is tight against the stock filter mount. This may require a prying force applied against the adapter to allow tightening while retaining the chosen orientation.
- Install new AFM gasket onto the back half of the adapter.

Warning: Installation should only be attempted by those with mechanical skills and experience working on vehicles. Standard safety precautions consistent with the tools and dangers of automotive work should be followed to protect from injury. Specifically, wear protective equipment, take care to stabilize the vehicle on a level surface or supportive lift, and allow vehicle to cool before attemptation installation; failure to comply can result in injury and/or damage to equipment.

CAUTION: AFM gasket should be applied dry. No additional gasket sealing compound is required. Ensure the adapter halves are free of oil residue.

12. Place the front half of the adapter against the gasket and loosely install socket head screws. If using a thread locking compound, please choose a medium strength and use it on the screws at this step.
13. Evenly draw the two halves of the adapter together by gradually tightening the socket head screws in an alternating criss-cross pattern (e.g., as when tightening the wheel lug nuts on a car).
14. When the adapter halves have been evenly drawn together, firmly tighten the socket head screws using the same criss-cross pattern as before.

SERVICE NOTE: Inspect adapter and screws for tightness at each oil filter change. To ensure proper seal, replace gaskets any time adapter is removed or disassembled.

15. Install oil filter onto the threaded stem of the oil filter adapter. Tighten per factory/service manual recommendations.

Final Inspection

16. Inspect oil hoses to ensure there are no tight bends that may restrict oil flow and that they are not contacting any moving parts. If necessary secure hoses to the frame using plastic zip-ties.
17. Refill engine with the correct amount and type of oil per operator's manual.
18. Start the engine and let it idle while checking all hose connections for any leakage. Tighten any loose hose clamps if a leak is found but take care not to overtighten. Over-tightened hose clamps may cut into oil lines and cause oil leaks.
19. After installation completion and engine warmup, shut the engine down and recheck the oil level. Correct the oil level if necessary but do not overfill.

SERVICE & UPGRADE ITEMS AVAILABLE	
PART NO.	DESCRIPTION
11-RU77-34	Jagg HyperFlow Lifetime Oil Filters Originally designed for race vehicles, these cleanable/reusable filters employ a stainless steel woven element to offer greater flow and greater filtration than OEM filters.
211-JSSN06 (silver) 211-JLWN06 (black)	Performance Braided Hose Kits High performance 3/8"(-06) Nitrile rubber oil hose with braided jacket, available in bright silver stainless-steel or black lightweight-fiber braided jacket. Includes 2x billet aluminum hose separators and 4x billet aluminum hose finishers with integrated wormdrive clamps.
08-0069	Oil filter strap wrench. Simply one of the easiest oil filter wrenches to use. Takes virtually no space in the toolbox or the saddlebag.
11-0064	Oil filter magnet. Catch harmful metals in your oil.

See these items and more at:
www.jagg.com