

Bluetooth® Mono Headset  
Compatible with any Bluetooth enabled device  
Optimized for Microsoft Lync  
Fully UC compatible



## FREEDOM TO DO MORE

Jabra Stealth UC takes Bluetooth® headsets to the next level by being the first to incorporate the breakthrough microPOWER battery technology which allows for a significantly smaller design, longer talk time and a better comfort experience.

### Your remote access to Siri / Google Now voice assistant

With Jabra Stealth you can just leave your smartphone in your pocket and still Siri and Google Now will always be available at your fingertips. Just tap the dedicated button on the headset to remotely activate and engage with Siri or Google Now from your smartphone.

### Premium Sound – No Noise!

The headset features the latest, most advanced sound enhancement technologies. Noise Blackout™ reduces background noise from your conversations and together with HD voice, you are ensured of crystal clear conversations at both ends of the call.

### Superior Comfort

There's a completely new comfort experience with Jabra Stealth. The headset is significantly smaller and lighter and the weight of the headset is perfectly balanced in your ear. It's so discreet and comfortable that you'll hardly realise you're wearing it.



## REASONS TO CHOOSE THE JABRA STEALTH UC

- Smartphone voice control button
- Noise blackout & HD voice\*
- Lightweight design & Ultimate Comfort Eargels

\* Network dependent



FIND MY JABRA  
With the Jabra Assist app  
For iOS and Android

OPTIMIZED FOR MICROSOFT LYNC



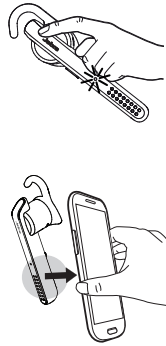
THE BLUETOOTH® WORD MARK AND LOGOS ARE OWNED BY THE BLUETOOTH SIG, INC. AND ANY USE OF SUCH MARKS BY GN NETCOM A/S IS UNDER LICENSE. (DESIGN AND SPECIFICATIONS SUBJECT TO CHANGE WITHOUT NOTICE)

## QUICK START GUIDE - GET STARTED UNDER 5 MINUTES

### 1 CONNECTING

#### CONNECT TO MOBILE DEVICE (using the Jabra Link 360 Bluetooth Adapter)

1. Turn the headset on.
2. Insert the Jabra Link 360 Bluetooth adapter into any USB port on your PC
3. Press and hold (3 secs) the answer / end button until the Bluetooth indicator flashes blue and pairing mode is announced in the headset. Follow the voice-guided instructions. The Headset and Jabra Link 360 come pre-connected.

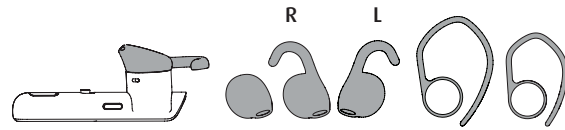


#### CONNECT TO MOBILE DEVICE (USING NFC)

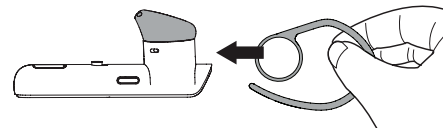
1. Ensure that NFC is enabled on your mobile device.
2. Slowly slide the NFC zone of the headset against the NFC zone of the mobile device until a connection is confirmed.

### 2 WEARING

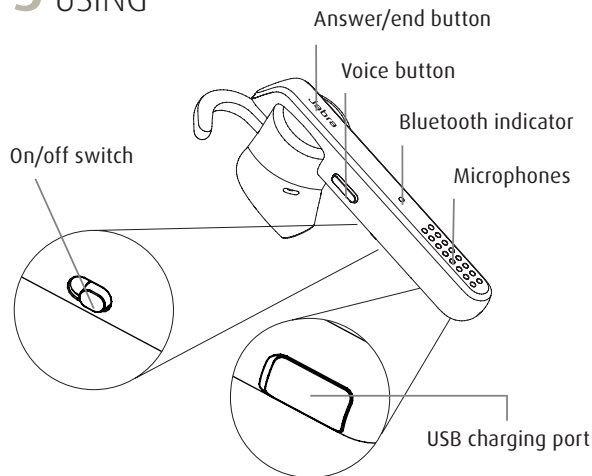
The headset can be worn on the left or right ear. Additional eargels and earhooks available in the pack.



#### ATTACHING THE EARHOOK



### 3 USING



|  |   |  |
|--|---|--|
|  | On/off                                    | Slide the <b>on/off</b> switch                             |
|  | Answer/end call                           | Tap the <b>answer/end</b> button                           |
|  | Reject call                               | Press and hold (1 sec) the <b>answer/end</b> button        |
|  | Redial last number                        | Double-tap the <b>answer/end</b> button when not on a call |
|  | Activate voice controls (phone dependant) | Tap the <b>voice</b> button                                |
|  | Speaker volume                            | Use the volume controls on the connected mobile device     |

#### DID YOU KNOW?

The Jabra Assist app can help you locate your headset using GPS tracking. Download the Jabra Assist App now for your Android™ or iOS device.

#### CHARGE THE HEADSET

Pull back the charging cover to expose the USB charging port. It takes approx. 2 hours to fully charge the battery.

## FEATURES AND SPECIFICATIONS

- Smartphone voice control button for remote activation of Siri / Google Now
- Noise blackout dual microphone technology reduces background noise
- HD Voice\* for high definition sound quality
- NFC\*\* for easy pairing
- Stream music, podcasts or GPS directions
- Up to 6 hours talk time
- Stay connected with the Nano sized bluetooth dongle
- Hd sound with noise reduction
- Superior comfort in a small design
- Dedicated voice control button

\* Network dependent \*\*Device dependent