

DECT Wireless Headset

ELEMENT
BY JPL



Order Code
JPL-Element-X500

Blank Cartridge Drawer
conceals port for optional USB
or Bluetooth Cartridge Module

TECHNICAL DATA	
Wireless Frequency:	DECT 6.0, 1.8GHz (EU, Rest of World) 1.9GHz (North America)
Microphone:	
Sensitivity:	-51dB ± 3dB 0dB=1V/1Pa @ 1kHz 4ø Noise Cancelling
Frequency Range:	10Hz-10kHz
Radio Frequency:	EU: 24dBm(250mW) US: 20dBm(100mW)
Speaker:	
Impedance:	20ø speaker element; 32Ω
Frequency Range:	300Hz-7000Hz @1kHz (input:100mV)
Battery Type:	Lithium Polymer 370mA
Power Supply:	DC 9V 500mA
Operating Temperature:	-10° to +60°C (14° to +140°F)
Storage Temperature:	-30° to +70°C (-22° to +158°F)



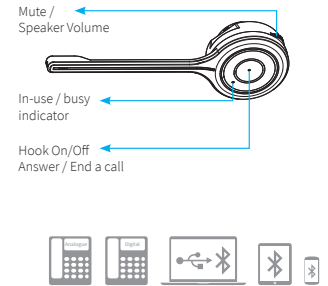
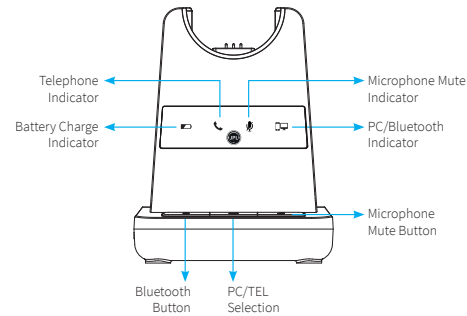
JPL-Element-X500

A totally unique 5 in 1 sustainable wireless DECT concept using a patented modular system with multiple combinations that future proof the headset for further developments in Bluetooth and USB technology.

Overview

Features	Single or dual ear - Unique user interchangeable headband from single to dual ear - Patented Left / right ear side compatible Universal patented base with slot-in cartridge drawer to accept Bluetooth* or USB* modules (*optional accessories - sold separately) DECT wireless technology - Security level A 'Put and stay' ratchet microphone boom arm with Surround Shield™ noise cancelling microphone Wideband enabled speakers with Sound Shield™ hearing protection Max 100m (300ft) coverage 7-9 hours talk time (stand by ~ 50 hours), quick recharge time (60 to 90 mins) 5 headsets can be paired to one base, allowing any one of the five headsets to answer a call. Once the call has been answered by one of the headsets, the other 4 headset go back to stand-by Fitted with 55mm leatherette ear cushions for maximum all day comfort
What's included	Universal base unit, microphone boom arm, monaural headband, telephone connection cable & switch mode multi country power adapter
Headset Weight	Light-weight headset, ~ 65g
Connection	DECT - 4 headsets to base
Base Connection	Base to desk phone via RJ11 - supplied as standard. Upgrade base to Bluetooth* or USB* using additional cartridge modules
Compatibility*	EHS (Full range of EHS cords available), USB, Bluetooth
Certifications	FCC, CE, RoHS, REACH
Tech Approval	Avaya Dev Connect, Unify
Warranty	2 Years repair or replacement warranty
MOQ	Master Shipping Carton: 20
EAN:	JPL-Element-X500: 5060126956334 * optional to purchase separately.
SKU:	575-268-001

Base Station & Charging Port



JPL-Element-X500 Accessories & Replacement Parts

The X500 USB Cartridge Module gives you:

- Softphone interoperability through USB/computer with 3CX, Avaya One-X Agent, Cisco Jabber, Counter Path Bria and Skype with assistance from the JPL Gateway.
- The JPL Gateway is available to download from <http://www.jpotele.com/jpl-gateway.aspx>

Order Code: **X500 USB Cartridge Module**
SKU: 575-268-007



The X500 Bluetooth Cartridge Module gives you:

- Wireless Bluetooth connection to any three Bluetooth devices simultaneously (mobile, dongle, tablet).
- This headset allows wireless conversations from any deskphone, softphone and mobile.

Order Code: **X500 BT Cartridge Module**
SKU: 575-268-005



JPL-Element-X500 Bluetooth Dongle

- For use with the Bluetooth Cartridge Module on devices that do not support Bluetooth.

Order Code: **BT-200 Dongle**
SKU: 575-290-016



JPL-Element-X500 Stereo Headband

- Optional wearing style for those who prefer a dual ear headset for more focused conversations.
- Simply disconnect the microphone boom arm from the monaural headband and reconnect it to the binaural headband.

Order Code: **X500 Binaural Headband**
SKU: 575-268-002



Longer Life

Because of the modular design, if a speaker / microphone or headband breaks outside of warranty, you only need to replace half of the headset (one part), which means a longer life for the headset and a cost saving because you do not need to replace the complete headset.

Cost of ownership reduced -

Why change the whole headset when changing half the headset is the solution!

Order Code:
X500 Microphone Boom Arm
SKU: 575-268-000



Order Code:
X500 Monaural Headband
SKU: 575-290-014



Further optional accessories available at www.jpotele.com:

EHS Adapter

JPL-DECT Handset Lifter

X500 Micro USB Charging Cable