

CS540: How to Adjust the Fit

The procedure below explains how to adjust the fit and install the headband on your CS540 headset.



Click on the image above to see a video on how to customize and adjust the fit on your CS540 headset.

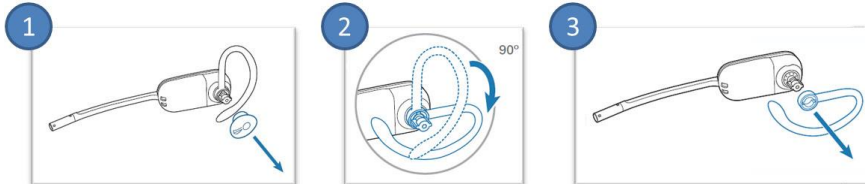
Recommended placement

For the best sound clarity and comfort, make sure your headset fits securely and is placed with the microphone boom pointing towards your mouth.



Your headset comes configured for your right ear with a pre-installed small ear tip and medium earloop. To find your best fit, try wearing the headset on each ear, as well as using different sized ear tips, earloops, and/or using the headband.

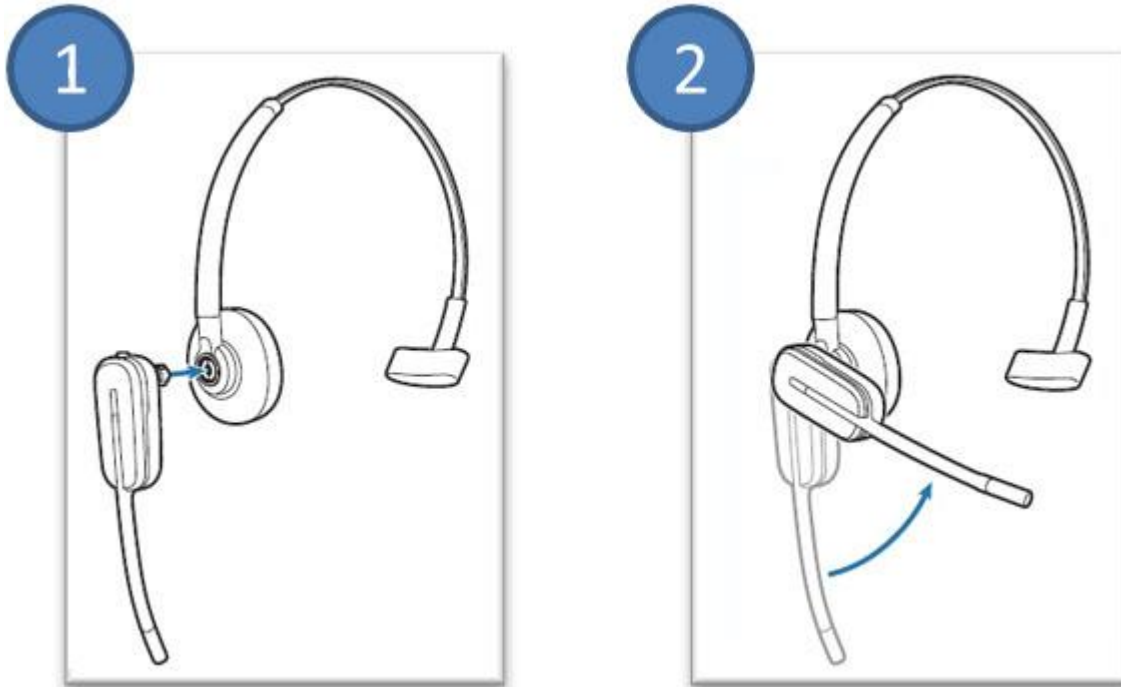
To replace the ear tip and/or earloop



1. Gently pull the eartip from the headset.
2. Rotate the earloop down 90°. **Note:** You will feel resistance when rotating the earloop downwards, but this is normal.
3. Remove the earloop from the headset.
4. Reinstall the earloop and ear tip in reverse order as shown above. Be sure the notch in the eartip faces the microphone.

To install the headband

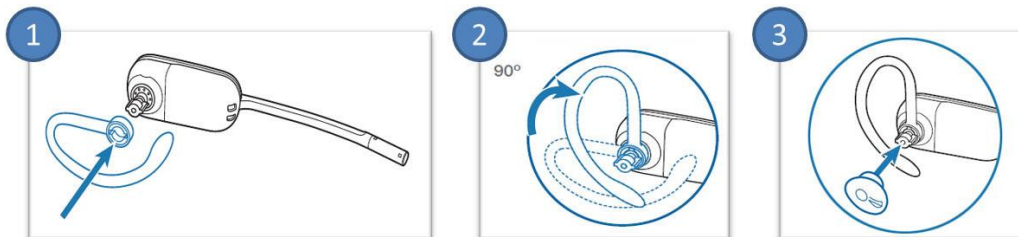
Before You Begin: Remove the eartip and earloop from the headset as shown in steps 1-3 under "To replace the ear tip and/or earloop."



1. Hold the headband so it is aligned as shown and insert the headset into the headband.
2. Rotate the headset up. **NOTE** You can rotate the in either direction, so you can wear it on the left or right ear.
3. To optimize the position of the headset, push the headset in so the microphone is close to the corner of your mouth.

To wear the headset on your left ear

Before You Begin: Remove the eartip and earloop from the headset as shown in steps 1-3 under "To replace the ear tip and/or earloop."



1. Choose the size of earloop that fits most comfortably. Align the earloop as shown and insert it onto the headset.
2. Rotate the earloop up 90°.

3. Choose the size of ear tip that fits most comfortably. Align the ear tip with the notch facing the microphone as shown and press it onto the headset.

CS540 Troubleshooting: Headset Doesn't Fit

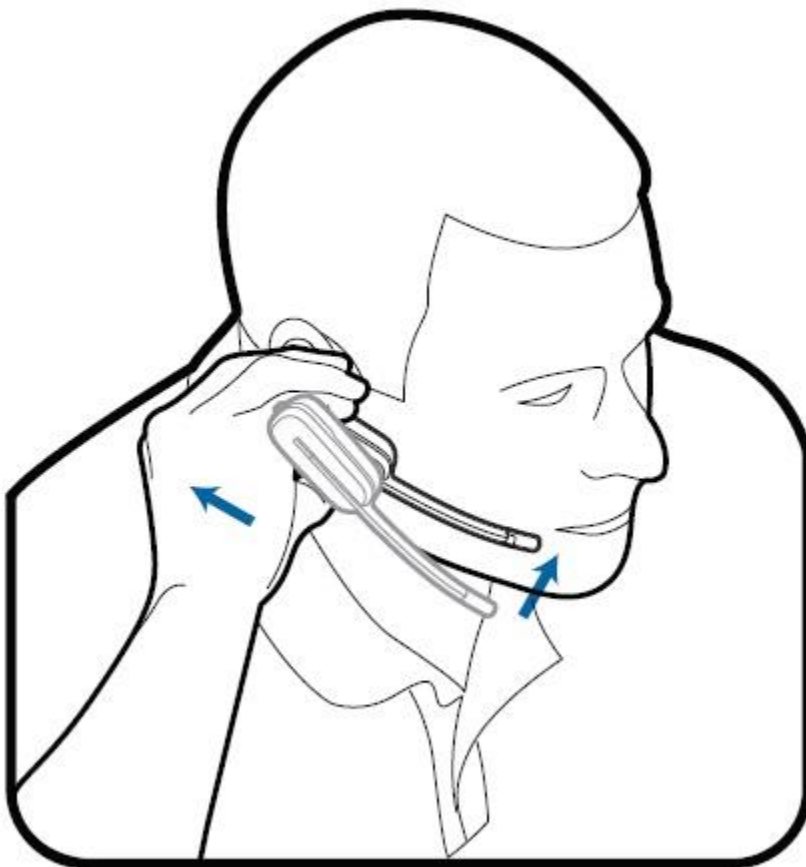
Article ID:
00007808

Question

Why doesn't my headset fit properly?

Answer

When you wear the headset, the microphone should rest as close to your cheek as possible without touching it. The microphone can be adjusted inward by pivoting the earpiece to optimize the position of the headset.



CS540-XD/CS545-XD Troubleshooting: Hearing Three Low Tones

Question

When I am on a call, I hear three low tones or the call gets disconnected. Why does this happen?

Answer

Three low tones in the headset is an out-of-range warning. You may hear this warning if:

- You are on a call and go out of the operating range of the headset. You hear a single mid tone when you are back in range.
- Your active call disconnects because you are out of range. The call is re-established when you come back within the range. However, if you remain out of the operating range for more than five minutes, the system drops the call.
- You are out of the operating range and press the call button, you hear a single tone for the button press and three low tones for failure to make the call.

CS540: How to Change the Battery

How do I change the battery on my CS540 headset?

If you notice that a fully charged battery is no longer lasting long enough, you can replace it. Its Part Number is 86180-01, and is sold by our [distributors](#).

To replace the battery:

1. Slide the battery cover off and remove it from the headset.
2. Pull the battery out of the attachment clip.
3. Grasp the battery connector and disconnect from the headset.
4. Plug the new battery to the battery connector.
5. Once connected, slide the battery into place.
6. Slide the cover back on and push it into place.