

PageTek 4

Multi-zone programmable
paging system

features

- Fully programmable zoned input UHF transmitter
- 5 zone and 10 zone versions
- All inputs configurable as dry contact or voltage input
- Mains powered, 24V and 12V DC models
- Ranges of up to 1 mile with standard 1/4 wave aerial
- All parameters PC programmable



PageTek 4
Mains model

PageTek 4

Our PageTek 4 now incorporates our latest 1 watt transmitter, which provides excellent signalling propagation in commercial environments. This exceptionally flexible programmable UHF POCSAG transmitter is available as either 5 zone or 10 zone models, which will automatically send messages direct to radio pagers and signal to fixed receivers when activated. The unit can be triggered by using the normally open or normally closed zone inputs on a volt free basis, or by the application or removal of voltages (in the range 5-18V dc). The mains powered system is available with optional battery back-up.

PageTek 4
Mains Transmitter



Plant Monitoring



Security/fire



Programming

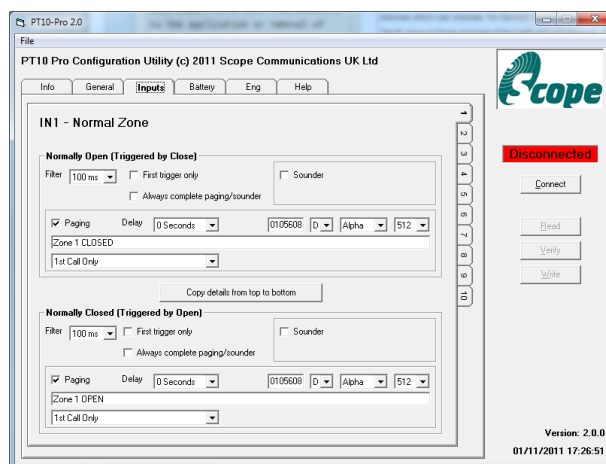
Scope PageTek 4 paging transmitters are available with either 5 or 10 programmable zone inputs which, when triggered, will automatically send the active zone message to portable or fixed pagers. This message can be repeated at predetermined intervals and a secondary message can be sent when the zone returns to its inactive state if required.

Multiple transmitters can be deployed at various locations all signalling to the same pager/pager groups.

Regular 'In Service' calls can be automatically sent to the receiving devices which can indicate 'No Service' on the pagers, or trigger a 'fault' zone on fixed receivers if the calls are not received. This gives the end-user confidence that the system is operating properly. The 10 zone version also has a special 'Burglar Alarm' mode with configurable entry/exit delay, transit zones and entry zone.

For advanced users who wish to program the unit themselves, a Programming Kit can be purchased. This consists of Windows based application software and a USB cable for PC. This allows all functions to be programmed and stored in the system in secure non-volatile memory.

12VDC, 24VDC and mains powered versions are available, with an optional battery back-up facility for the mains version.



PT10PROG Programming application, input configuration screen

PageTek 4

PC Programmable Functions

- Individual Zone States (normally open, normally closed or change of state)
- Voltage Input Triggers (5-18V)
- Input trigger time
- Transmission Delay
- Transmission repeat functions
- Local output (open collector)
- Identity code (capcode) for each zone and each state
- Preformed text messages, either numeric or alphanumeric
- Low Battery Signal
- 'In Service' call period
- 'Burglar Alarm' mode (10 zone version only)
- Tamper zone

Performance

A standard quarter wave aerial will provide more than adequate performance for most industrial sites and buildings well in excess of 100,000 sq ft or a free radiated range of up to a mile.

Performance can be improved with a centre fed half wave dipole aerial, mounted either inside or outside the building.

Pagers - General

A wide range of flexible pagers exist that can be tailored to meet your exact requirements. Pagers can feature a full alphanumeric display, numeric display or literally be as simple as a beep or vibrate only pager. Many of the pagers that we now supply are available with advanced software control, enabling them to be programmed in a specific configuration which the user cannot change (e.g. to prevent accidental switch-off, or to lock the pager in vibrate mode so that a deaf person can always detect a call).

Please see specific pager brochures on the wide range of pagers available to suit these systems.

Fixed Receivers for Telemetry, Telecommand and Monitoring

For telemetry or telecommand applications our multi-zone receivers will operate relay outputs. The outputs can be set to be momentary or latched and can be unlatched or reset by further transmissions. Our receivers can also automatically monitor activity from any number of transmitters and output the data on its serial port. There is also a fixed, mains powered, paging receiver available which can be desk or wall mounted and will provide the same full text readout as a standard pager with the advantages of a louder alert and LED indicator lights.

See the brochures covering these products for more information or ask our technical sales team.

Programming and Product Related Services

A range of standard program settings are available from stock, together with a bespoke service, and terminal software is available for customers who wish to undertake their own programming.

PageTek 4

Flexible multi-zone paging transmitters

Specification

MAINS POWERED MODELS

Footprint: (H)* 328 x (W) 190 x (D) 75 mm[*496 mm with 1/4 wave antenna]

Power Input: 90-230V AC 50-60 Hz @250mA

Facilities required: 230V ac 13A mains socket or 5A fused spur within 1 metre of unit.

DC POWERED MODELS

Footprint: (H)* 185 x (W) 140 x (D) 42 mm[*335 mm with 1/4 wave antenna]

Power Input:

12V model: 12V-13.8V dc @ 0.8A (max)

24V model: 13.8V - 24V dc @ 0.8A (max)

ALL MODELS

Frequency Range (MHz)*: 446.000 - 469.700

RF Output Power: 1 watt (maximum)

Approvals: CE marked and compliant with the R&TTE Directive 1999/5/EC.

Standards applied: EN 300 224 (On-Site Paging)

UK Licence Requirement:

Business Radio Simple Site Licence
Ofcom reference OFW432 (www.ofcom.org.uk)

* Subject to licensing conditions



DC Model

Mains Model



Scope Text Pagers



LDC Pagers Direct Limited
Astwick House
Croughton
Northamptonshire
NN13 5LL

Tel: +44 (0) 1869 811411
Fax: +44 (0) 1869 811311
Web: www.pagers.co.uk
Email: sales@pagers.co.uk



Licensing: This equipment requires a licence for operation in the UK.
Contact our sales team for details.

© Scope Communications UK Ltd. All specifications subject to change. E & OE.