



making waves in a wire-free world

# Connexions

UHF POCSAG  
Radio Paging System



## features

- Benchmark UHF radio paging system
- Available with two or three serial ports
- Eight on-board volt free trigger contacts
- Optional telephone interface
- Optional Ethernet card
- Can be driven by a PC, either standalone or via a network
- Optional protocol conversion software allows connection to almost any fire, security or nurse call panel
- Mains powered and DC models are available
- Models - 1 watt (CX6) or 5 watt (CX5)\* RF output
- Ranges of up to 2 kilometres from 1 watt transmitter with 1/4 wave aerial

*\* Set to provide 2 watts maximum ERP when used with a Simple Site Licence in the UK (OFW432)*

# Connexions

The Connexions System has always provided the latest in on-site paging technology at a realistic price, Its modular design concept allows you to buy the basic unit and to add to it as your company's needs change so the initial outlay is kept to a minimum

Flexibility has always been the key word with the Scope Connexions Systems, with its modular high performance interfaces enabling robust connectivity to many host devices. They include connection to internal telephone, PC network, RS232, RS485, USB, dry-contacts and voltage triggers. There is also an internal protocol conversion option, which enables the translation of incoming RS232 data from host hardware into paging data, providing paging from various fire, intruder, nurse call, building management systems etc.

The basic unit has two RS232 ports and eight dry contact inputs, which enables the system to be hard wired to anything from an alarm control panel to a front door bell to alert prescribed users in the event that required criteria occur. All Connexions systems are supplied configured with default settings and are able to support up to 4 digit pager numbers as standard (9999), so expansion is already built in. The transmitter is designed to work at UHF frequencies which give an incredibly high degree of reliability in terms of the signalling success within a commercial environment, whilst using very small and unobtrusive aerials. It uses the same international standard digital signalling system (POCSAG) deployed by most wide area paging companies. This is accepted to be amongst the most sophisticated and reliable in the world.

## Telephone Connection

Connexions can be interfaced to almost any business telephone system\*. Operation is very simple; just pick up the handset, key in the paging system extension number and follow the voice prompts. Numeric pager messages can be entered directly using the telephone keypad. It is also possible to send pre-configured text messages when using alphanumeric pagers, which can be programmed by the installer using PC utility software.

## Paging from a PC

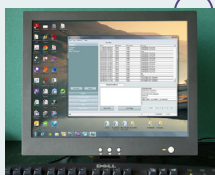
Connect your paging system directly to a personal computer with the aid of Connex Page, our professional Windows TM based software package. Connex Page allows paging in both numeric and alphanumeric formats, with other enhanced features such as the ability to store unlimited pre-

\* When fitted with optional telephone interface. Requires 2 wire analogue extension port and DTMF tone signalling

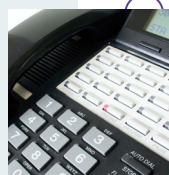
Connexions transmitter



Fire / security / nursecall



Connex Page / LAN



PABX Telephone

# Connexions

programmed messages, coupled with automatic diary scheduling functions to remind personnel about meetings, appointments and duties. These can be programmed hours, days, weeks, even months in advance.

## Network paging

Connex Page software package can be installed right across your network and can access multiple Connexions transmitters linked to your LAN or VPN via (optional) Ethernet interfaces. This means that if you have multiple sites on your network, you can page from a PC in say, your London office to a pager in your Birmingham office.

## Alarm and Switch Connection

There are eight on-board dry-contact 'alarm' inputs, which can be factory programmed to your specification or can be user programmed using PC software. There is also an optional junction box (part code DC8) available for ease of connection to the terminals.

## Interfacing to third party equipment

The Connexions system has been designed to be connected to a wide variety of devices to enable automatic messages to be sent to individuals or groups of people when their attention is required. This often requires the transmitter to be interfaced to other manufacturer's host equipment, which in most cases was never intended to control a radio paging system. To overcome this difficulty, Scope has designed

transmitter software to facilitate data capture from a wide range of other manufacturer's equipment. This enables interconnection with Nurse Call systems, Security, Fire and building management systems, as well as process control apparatus (e.g. temperature and flow rate monitoring). Data can be processed in a wide variety of formats, and our Technical Sales team will be more than happy to advise on specific applications.

## Pagers - General

A wide range of flexible pagers exist that can be tailored to meet your exact requirements. Pagers can feature a full alphanumeric display, numeric display or literally be as simple as a beep or vibrate only pager. Many of the pagers that we now supply are available with advanced software control, enabling them to be pre-set in a particular configuration which the user cannot change, e.g. to prevent accidental switch-off, or to lock the pager in vibrate mode, so that a deaf person can always detect a call. Please see specific pager brochures on the wide range of pagers available to suit these systems.

## Performance

The Connexions system uses the latest surface mount components to deliver fast, reliable operation and can be supplied with 1 or 5 watt\* high quality transmitter modules for rock solid RF performance. Installing a 1 watt transmitter with a standard quarter wave aerial (approx. 17 cm tall) will provide more than adequate range for most buildings well in excess of 9,000 sq metres. For larger sites performance can be further improved by using the 2 watt\* transmitter with a centre fed half wave dipole aerial mounted either inside, or outside the building at a more elevated height. Transponding repeater units are also available to aid coverage of very large or 'difficult' sites (subject to licensing conditions).

*\* Max ERP with UK simple site licence (OFW432) is 2W*

## Other special requirements

Our customers are the driving force behind our business and our aim is to provide the most reliable, cost-effective and safe solutions to all their special requirements. Call us to find out how we can tailor a system to meet your individual needs.



PABX Telephone

Fire Panel

# Connexions

## Specifications

**Footprint: (H) 190\* x (W) 335 x (D) 70 mm**  
[\*355 mm with 1/4 wave antenna]

**Clearance:** allow minimum 200 mm clearance on all sides

### System power requirements:

#### Units with internal PSU:

**CX6 :** 90-240V AC <0.5A 50/60Hz Mains

**CX5 :** 90-240V AC <0.8A 50/60Hz Mains

#### Units without PSU:

**CX6DC:** 12-14V DC 1.5A minimum

**CX5DC:** 12-14V DC 3.0A minimum

### RF Output Power:

**CX6:** Up to 1 watt max

**CX5:** Up to 5 watts max [2W max ERP using 459MHz paging band in the UK]

### Frequency Range:

**CX6:** 446.000MHz - 469.700MHz

**CX5:** 446.000MHz - 464.000MHz

### All Models

#### Approvals:

CE marked

R&TTE Directive 1999/5/EC

ROHS Directive 2011/65/EU

#### Standards Applied:

EN 300 224 (On-Site Radio Paging)

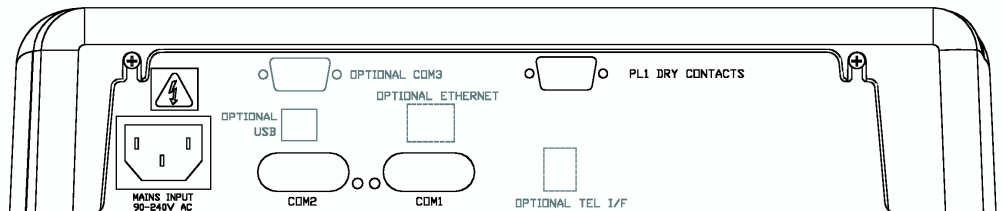
EN 301 489 (EMC)

EN 60950 (Safety)

#### UK Licence Requirement:

Business Radio Simple Site Licence

Ofcom reference OFW432 ([www.ofcom.org.uk](http://www.ofcom.org.uk))



Connexions Input Panel Options



LDC Pagers Direct Limited  
Astwick House  
Croughton  
Northamptonshire  
NN13 5LL

Tel: +44 (0) 1869 810804  
Fax: +44 (0) 1869 811311  
Web: [www.pagers.co.uk](http://www.pagers.co.uk)  
Email: [sales@pagers.co.uk](mailto:sales@pagers.co.uk)



Licensing: This equipment requires a licence for operation in the UK.  
Contact our sales team for details.

© Scope Communications UK Ltd. All specifications subject to change. E & OE.