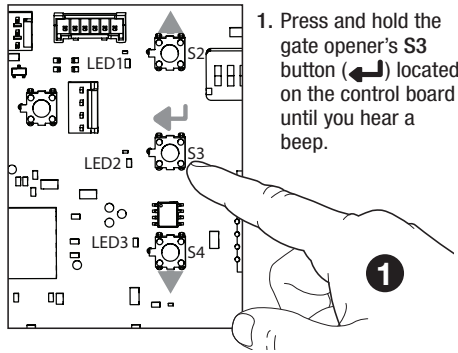
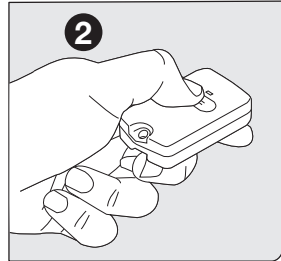


**Programming the FM134 and FM135 Remote to Mighty Mule MM371, MM372, MM571 or MM572 Automatic Gate Openers**



1. Press and hold the gate opener's S3 button (↵) located on the control board until you hear a beep.



2. Press and hold the desired button on the remote (until you hear a beep) to complete programming process. The remote is now programmed to the gate opener.

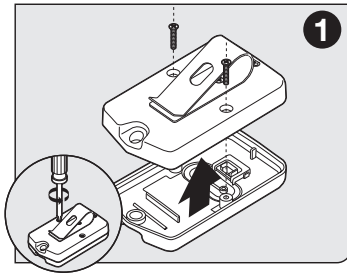
**NOTE:** To program any subsequent FM134 or FM135 remotes after the first, simply adjust the dip switch pattern to match the already programmed remote. An infinite number of the transmitters may be programmed in this manner.



a Nice brand

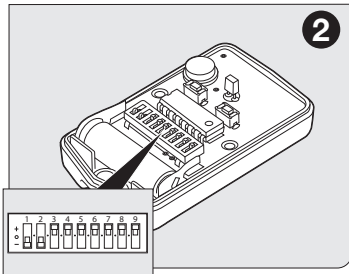
## Entry Transmitters

**Programming the FM134 and FM135 Remote to Mighty Mule MM271 or MM272 Automatic Gate Openers**



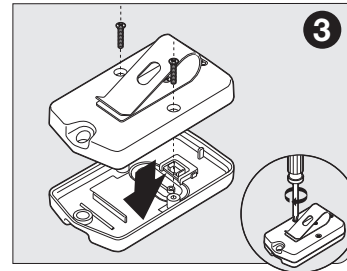
1

1. Remove back cover of the opener remote.



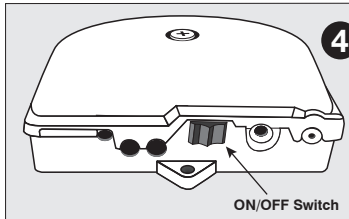
2

2. Use small screwdriver to move switches to random positions. If you have more than one transmitter, set them all with the same code.



3

3. Replace and secure back cover of the opener remote.



4

ON/OFF Switch

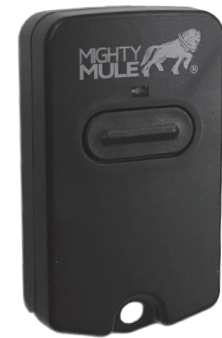
4. Power off control box. Press and hold a transmitter button while sliding the ON/OFF switch to the ON position. Continue to hold the selected transmitter button for 8-10 seconds. You will hear a single or a series of beeps, followed by a pause then a single beep. Release transmitter's button. Your personal code is now programmed to that button.

**NOTE:** To program any subsequent FM134 or FM135 remotes after the first, simply adjust the dip switch pattern to match the already programmed remote. An infinite number of the transmitters may be programmed in this manner.

**NOTE:** The process for programming any wireless accessory in the same process as erasing that accessory. There is no indication that the accessory has been programmed or erased. Make sure to test the accessory before programming, because you may unintentionally erase it.



**FM134**  
Two Button



**FM135**  
Single Button

# User Guide



**Mighty Mule Sales & Technical Service: 800-421-1587**

For more information about the full line of Mighty Mule Automatic Gate Operators, Gate Openers and Access Controls visit

[www.mightymule.com](http://www.mightymule.com)

Niceforyou.com

Nice

©2023 Nice North America LLC.  
Mighty Mule is a registered trademark of Nice North America LLC. All rights reserved.

183-0140 Rev-G

# FM134

## Two Button Entry Transmitter

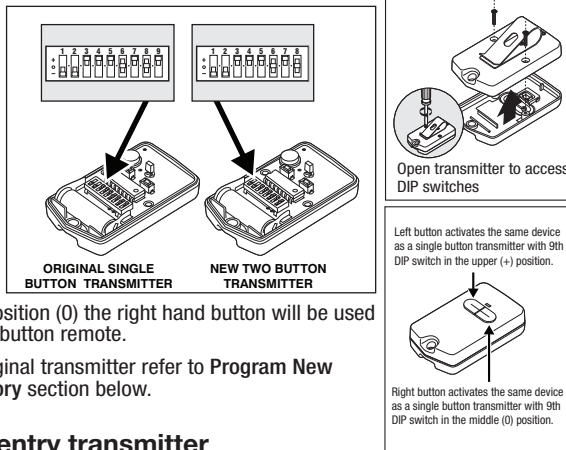
The two button transmitter is used for the remote control of two gate openers or a gate opener and a garage door opener. A Universal Receiver (RB709U-NB) is required for use with garage door openers.

### Instructions for adding additional entry transmitter(s)

If you already have a Two Button transmitter that operates your gates and are simply adding an additional Two Button transmitter, set the DIP switches in the new transmitter to match the DIP switches in your original transmitter, reassemble the transmitters and you are done.

### If you are matching your two button transmitter to a single button transmitter follow these steps:

1. Match the eight DIP switches found in the dual button transmitter to the first eight DIP switches in the single button transmitter.
2. The ninth DIP switch on the single button transmitter cannot be in the lowest position (-); it must be changed to the upper (+) or middle (0) position at this time.
3. If the ninth DIP switch is set to the upper position (+) the left hand button will be used to send the same code when using the dual button remote.
4. If the ninth DIP switch is set to the middle position (0) the right hand button will be used to send the same code when using the dual button remote.
5. If you change the ninth DIP switch in the original transmitter refer to **Program New Transmitter Setting to Gate Opener's Memory** section below.



### Instructions for replacing a lost entry transmitter

If you are replacing a lost transmitter and you know or have your original transmitter's DIP switch setting written down, set the new transmitter DIP switches to that setting and it is ready to activate your gate opener.

If you don't know the DIP switch setting from your original transmitter, you will need to select a new setting.

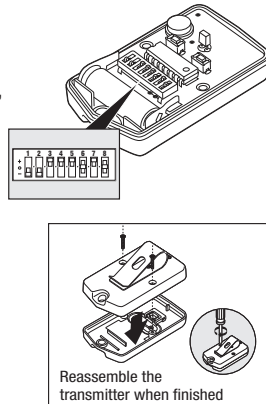
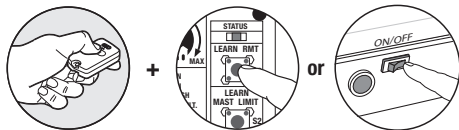
### Personalize your Transmitter Setting

There are eight (8) DIP switches, each of which can be placed in three different positions (+,0,-). DO NOT set all switches in the same position, such as all +, all -, or all zeros.

### Program New Transmitter Setting to Gate Opener's Memory

Some gate openers are programmed with a LEARN REMOTE or LEARN TRANSMITTER button and some with the ON/OFF switch.

See page 4 for transmitter programming instructions for Mighty Mule MM271, MM272, MM371, MM372, MM571 or MM572 Automatic Gate Openers.



**NOTE:** If the red light on the transmitter is dim or flickers when the transmitter button is pushed, the transmitter battery may be weak. Replace when necessary with a A23S 12 Volt battery.

### MIGHTY MULE LIMITED WARRANTY

This product is warranted to the original consumer ("You") by Nice North America against defects in material and workmanship for a period of twelve (12) months from the date of purchase. This limited warranty only extends to you if the item was purchased directly from Nice North America or through an authorized sales partner. Nice North America will, at its option, either repair or replace any product that it confirms is defective and eligible for service under this warranty and will return the repaired or replaced product to you at Nice North America's cost. This warranty does not apply to damage to the product from negligence, abuse, abnormal usage, misuse, accidents, acts of god, normal wear and tear, failure to follow the manufacturer's instructions, or arising from improper installation, storage or maintenance. Some states do not allow the exclusion or limitation of incidental and consequential damages, so the above limitation or exclusion may not apply. This warranty gives you specific legal rights and you may also have other rights, which vary from state to state. In order to be protected by this warranty, a copy of the receipt or other valid proof of purchase must be provided with any product that is being repaired or replaced under this warranty. In order to initiate warranty service for your product, please contact Tech Services at (800) 421-1587 for a Return Authorization Number ("RA") and other important details.

# FM135

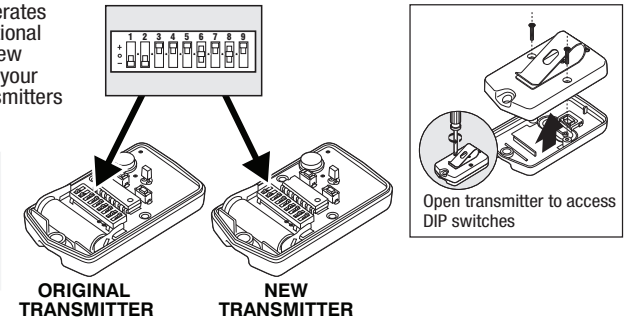
## Single Button Entry Transmitter

You can have as many transmitters as you want for family and guests to open your gate. The DIP switches in all the transmitters for a particular gate opener must be set the same.

### Instructions for adding additional entry transmitter(s)

If you already have a transmitter that operates your gate and are simply adding an additional transmitter, set the DIP switches in the new transmitter to match the DIP switches in your original transmitter, reassemble the transmitters and you are done.

**IMPORTANT:** if you change the DIP switches in the original transmitter refer to **Program New Transmitter Setting to Gate Opener's Memory** section below.



### Instructions for replacing a lost entry transmitter

If you are replacing a lost transmitter and you know or have your original transmitter's DIP switch setting written down, set the new transmitter DIP switches to that setting and it is ready to activate your gate opener.

If you don't know the DIP switch setting from your original transmitter, you will need to select a new setting.

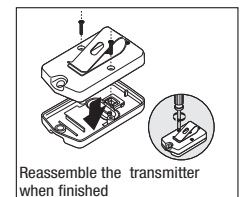
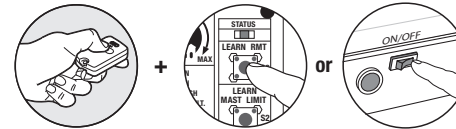
### Personalize your Transmitter Setting

There are nine (9) DIP switches, each of which can be placed in three different positions (+,0,-). DO NOT set all switches in the same position, such as all +, all -, or all zeros.

### Program New Transmitter Setting to Gate Opener's Memory

Some gate openers are programmed with a LEARN REMOTE or LEARN TRANSMITTER button and some with the ON/OFF switch.

See page 4 for transmitter programming instructions for Mighty Mule MM271, MM272, MM371, MM372, MM571 or MM572 Automatic Gate Openers.



**NOTE:** If the red light on the transmitter is dim or flickers when the transmitter button is pushed, the transmitter battery may be weak. Replace when necessary with a A23S 12 Volt battery.

**FCC WARNING:** Changes or modifications to this unit not expressly approved by the party responsible for compliance could void the user's authority to operate the equipment.

**NOTICE:** This device complies with part 15 of the FCC rules and with Industry Canada license-exempt RSS standard(s). Operation is subject to the following two conditions: (1) this device may not cause interference, and (2) this device must accept any interference, including interference that may cause undesired operation of the device.

Le présent appareil est conforme aux CNR d'Industrie Canada applicables aux appareils radio exempts de licence. L'exploitation est autorisée aux deux conditions suivantes: (1) l'appareil ne doit pas produire de brouillage, et (2) l'utilisateur de l'appareil doit accepter tout brouillage radioélectrique subi, même si le brouillage est susceptible d'en compromettre le fonctionnement.

However, there is no guarantee that interference will not occur in particular installations. If this equipment does cause harmful interference to radio or television reception, which can be determined by turning the equipment off and on, the user is encouraged to try to correct the interference by one or more of the following measures: • Reorient or replace the receiver antenna. • Increase the separation between the equipment and the receiver. • Connect the equipment into an outlet on a circuit different from that to which the receiver is connected. • Consult the dealer or an experienced radio/TV technician for help.